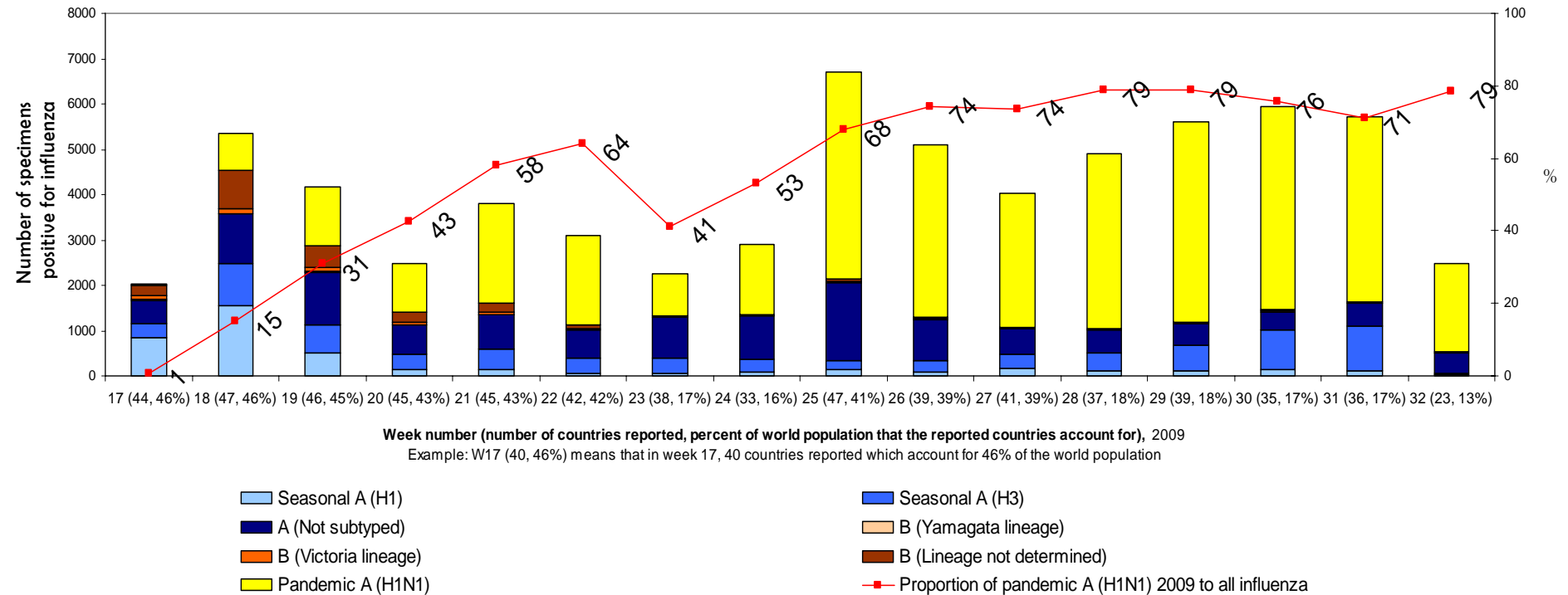


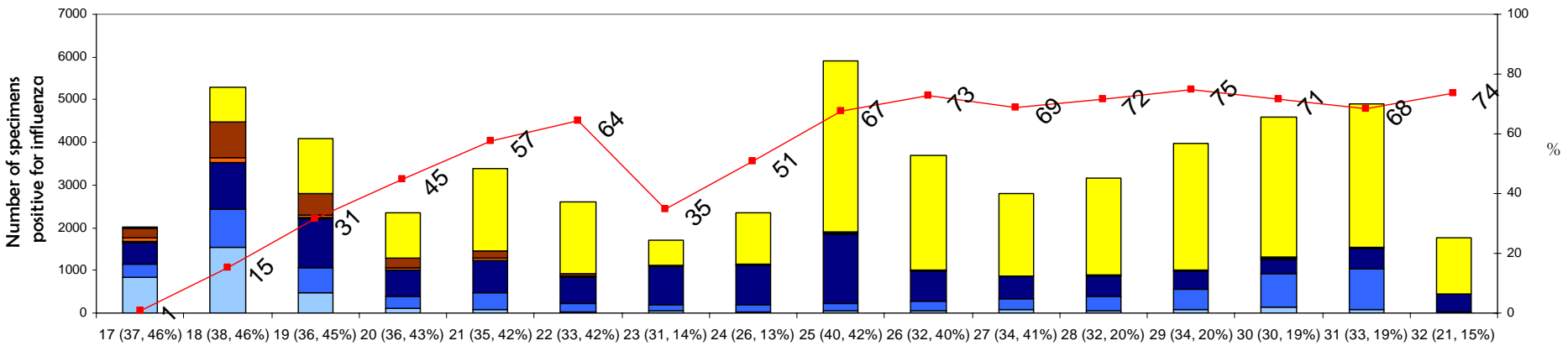
# FluNet Global Data (week 17-32)

## Number of specimens positive for influenza by subtypes (from 19 April to 8 August)



# Northern hemisphere (week 17-32)

## Number of specimens positive for influenza by subtypes (from 19 April to 8 August)



Week number (number of countries reported, percent of world population that the reported countries account for), 2009  
 Example: W17 (40, 46%) means that in week 17, 40 countries reported which account for 46% of the world population

- Seasonal A (H1)
- A (Not subtyped)
- B (Victoria lineage)
- Pandemic A (H1N1)
- Seasonal A (H3)
- B (Yamagata lineage)
- B (Lineage not determined)
- Proportion of pandemic A (H1N1) to all influenza

# Southern hemisphere (week 17-32)

## Number of specimens positive for influenza by subtypes (from 19 April to 8 August)

