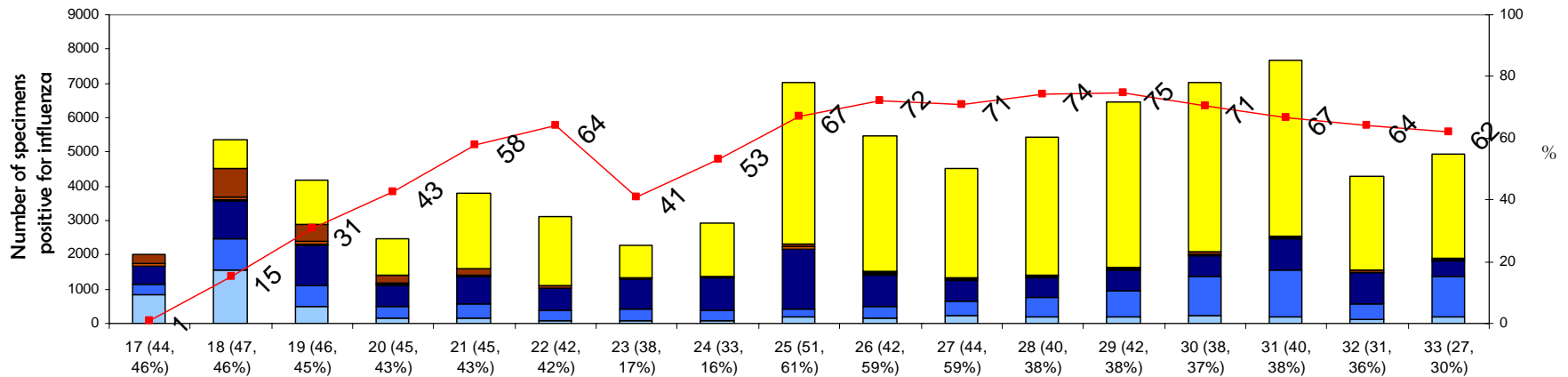


FluNet Global Data (week 17-33)

Number of specimens positive for influenza by subtypes (from 19 April to 15 August)



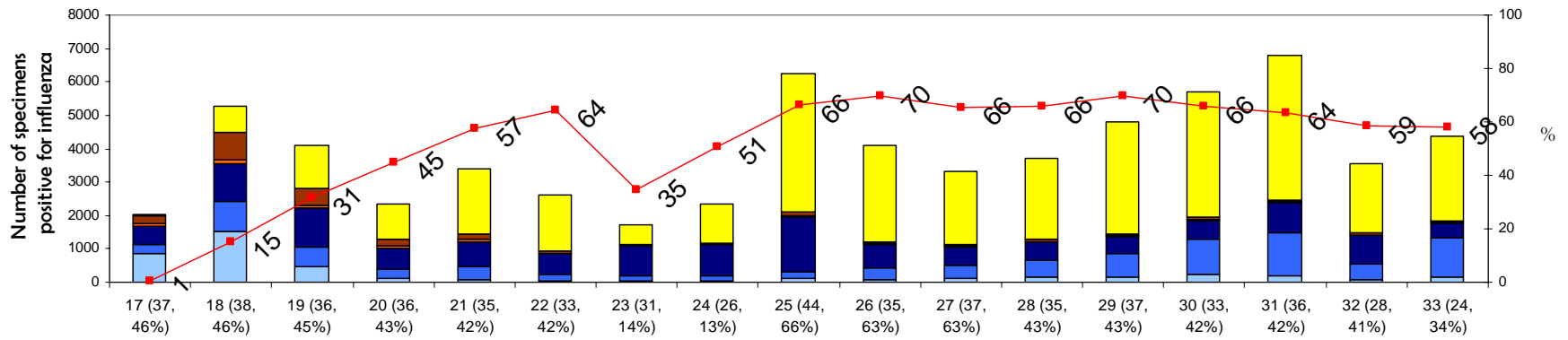
Week number (number of countries reported, percent of world population that the reported countries account for), 2009

Example: W17 (40, 46%) means that in week 17, 40 countries reported which account for 46% of the world population

- Seasonal A (H1)
- Seasonal A (H3)
- A (Not subtyped)
- B (Yamagata lineage)
- B (Victoria lineage)
- B (Lineage not determined)
- Pandemic A (H1N1)
- Proportion of pandemic A (H1N1) 2009 to all influenza

Northern hemisphere (week 17-33)

Number of specimens positive for influenza by subtypes (from 19 April to 15 August)

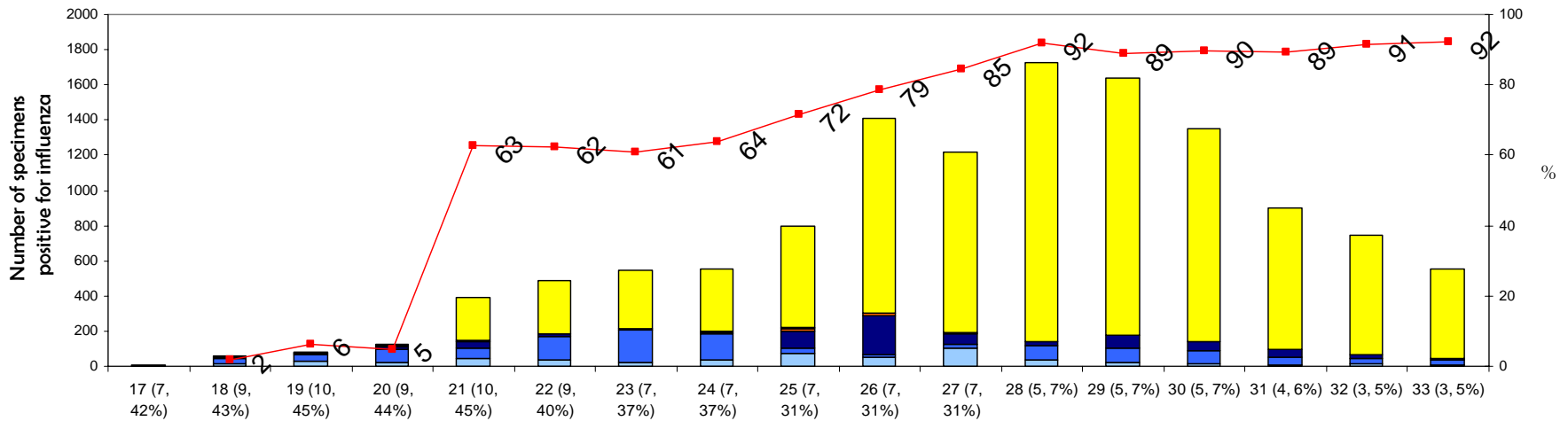


Week number (number of countries reported, percent of world population that the reported countries account for), 2009
 Example: W17 (40, 46%) means that in week 17, 40 countries reported which account for 46% of the world population

- Seasonal A (H1)
- A (Not subtyped)
- B (Victoria lineage)
- Pandemic A (H1N1)
- Seasonal A (H3)
- B (Yamagata lineage)
- B (Lineage not determined)
- Proportion of pandemic A (H1N1) 2009 to all influenza

Southern hemisphere (week 17-33)

Number of specimens positive for influenza by subtypes (from 19 April to 15 August)



Week number (number of countries reported, percent of world population that the reported countries account for), 2009

Example: W17 (40, 46%) means that in week 17, 40 countries reported which account for 46% of the world population

- Seasonal A (H1)
- A (Not subtyped)
- B (Victoria lineage)
- Pandemic A (H1N1)

- Seasonal A (H3)
- B (Yamagata lineage)
- B (Lineage not determined)
- Proportion of pandemic A (H1N1) 2009 to all influenza