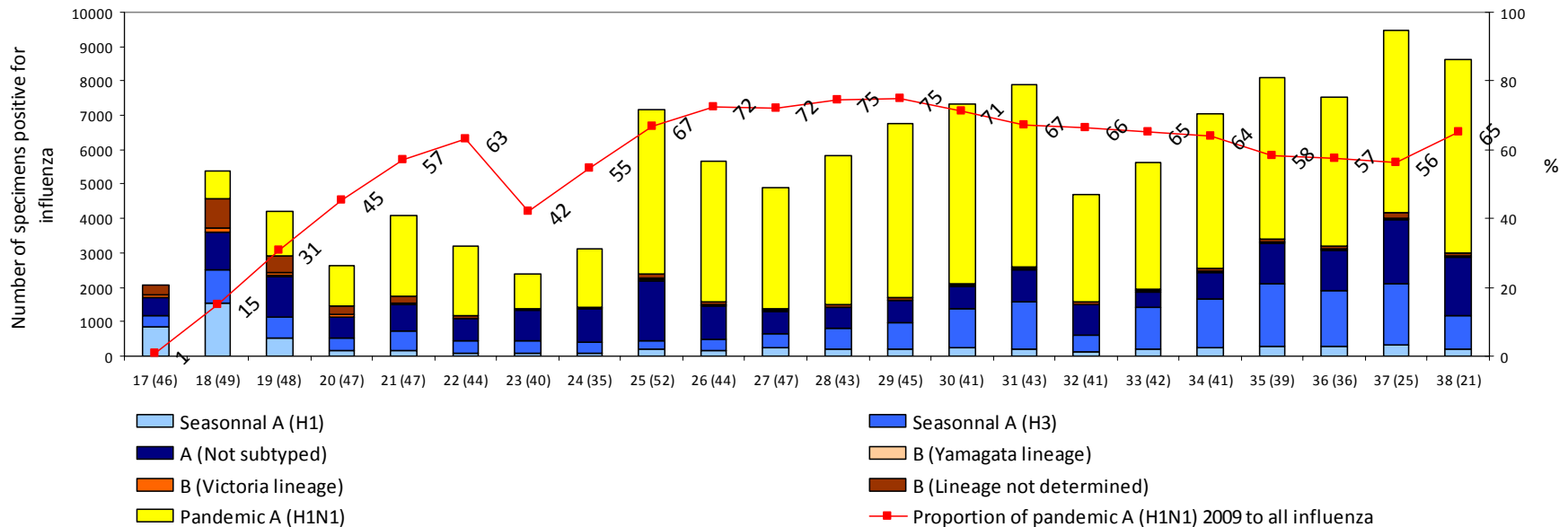


Northern and Southern hemispheres (week 17-38)

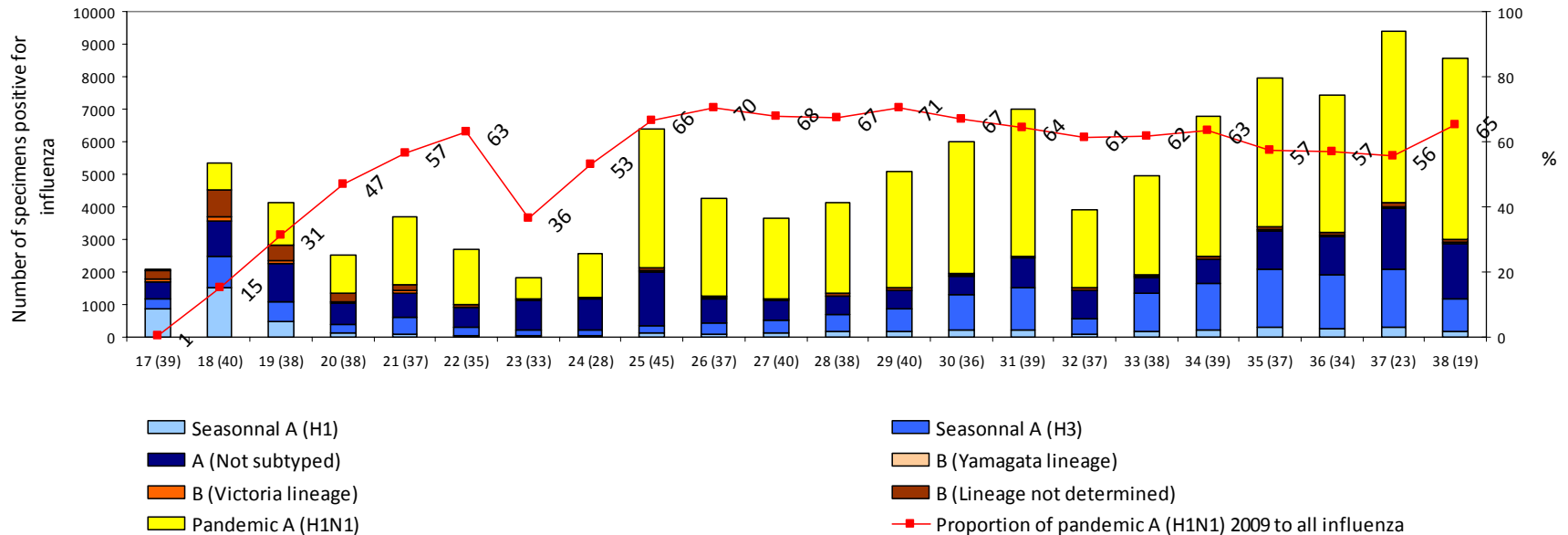
Number of specimens positive for influenza by subtypes (from 19 April to 19 September)



Virological data reported to FluNet by GISN NICs from countries in the northern and southern hemispheres (week 17-38). Bars represent the number of specimens reported positive for influenza viruses during the reporting week represented in the X-axis. The X-axis also shows the number of countries that reported to FluNet during the respective week. Example: 17 (45) means that in week 17, 45 countries reported. The right side Y-axis shows the proportion (%) and the left Y-axis shows the absolute number of specimens reported positive for influenza viruses (influenza A subtypes, pandemic H1N1 and influenza B).

Northern hemisphere (week 17-38)

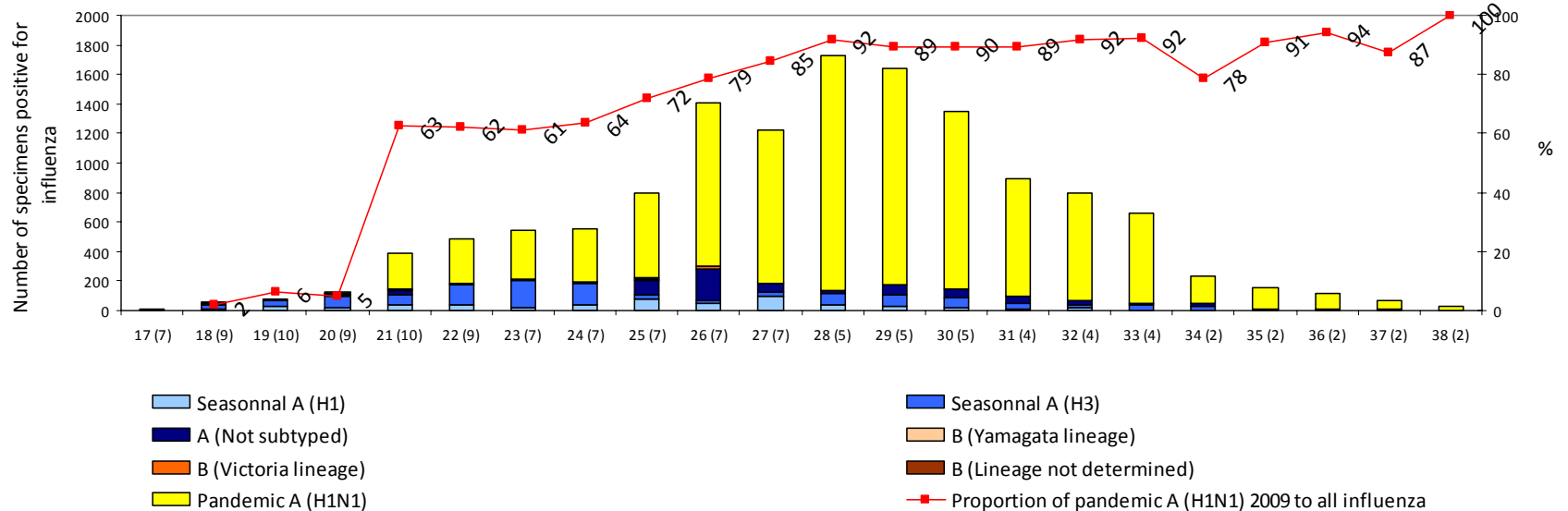
Number of specimens positive for influenza by subtypes (from 19 April to 19 September)



Virological data reported to FluNet by GISN NICs from countries in the northern hemisphere (week 17-38). Bars represent the number of specimens reported positive for influenza viruses during the reporting week represented in the X-axis. The X-axis also shows the number of countries that reported to FluNet during the respective week. Example: 17 (38) means that in week 17, 38 countries reported. The right side Y-axis shows the proportion (%) and the left Y-axis shows the absolute number of specimens reported positive for influenza viruses (influenza A subtypes, pandemic H1N1 and influenza B).

Southern hemisphere (week 17-38)

Number of specimens positive for influenza by subtypes (from 19 April to 19 September)



Virological data reported to FluNet by GISN NICs from countries in the southern hemisphere (week 17-38). Bars represent the number of specimens reported positive for influenza viruses during the reporting week represented in the X-axis. The X-axis also shows the number of countries that reported to FluNet during the respective week. Example: 17 (7) means that in week 17, 7 countries reported. The right side Y-axis shows the proportion (%) and the left Y-axis shows the absolute number of specimens reported positive for influenza viruses (influenza A subtypes, pandemic H1N1 and influenza B).