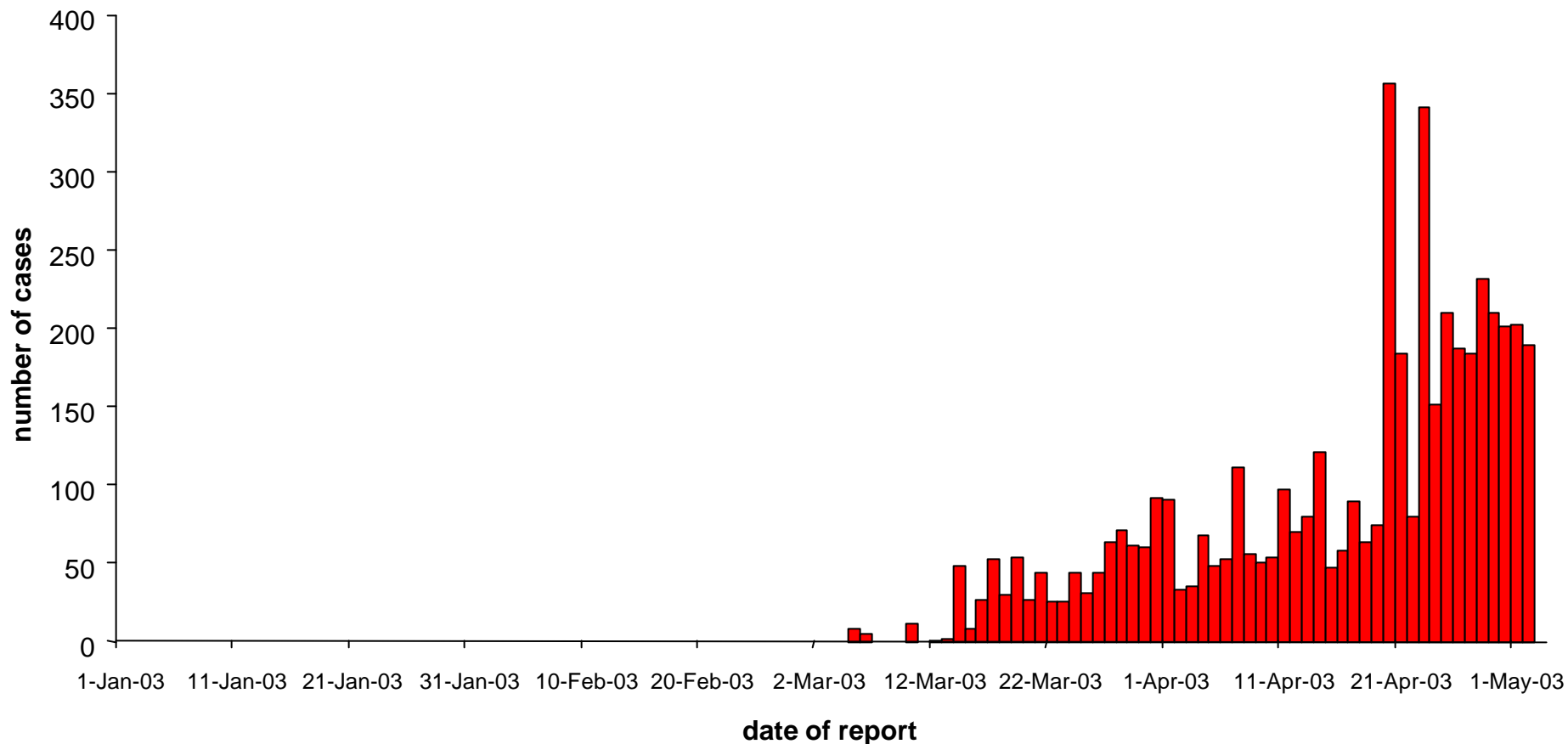


Probable cases of SARS by date of report
Worldwide* (n=4,864)
1 January - 2 May 2003

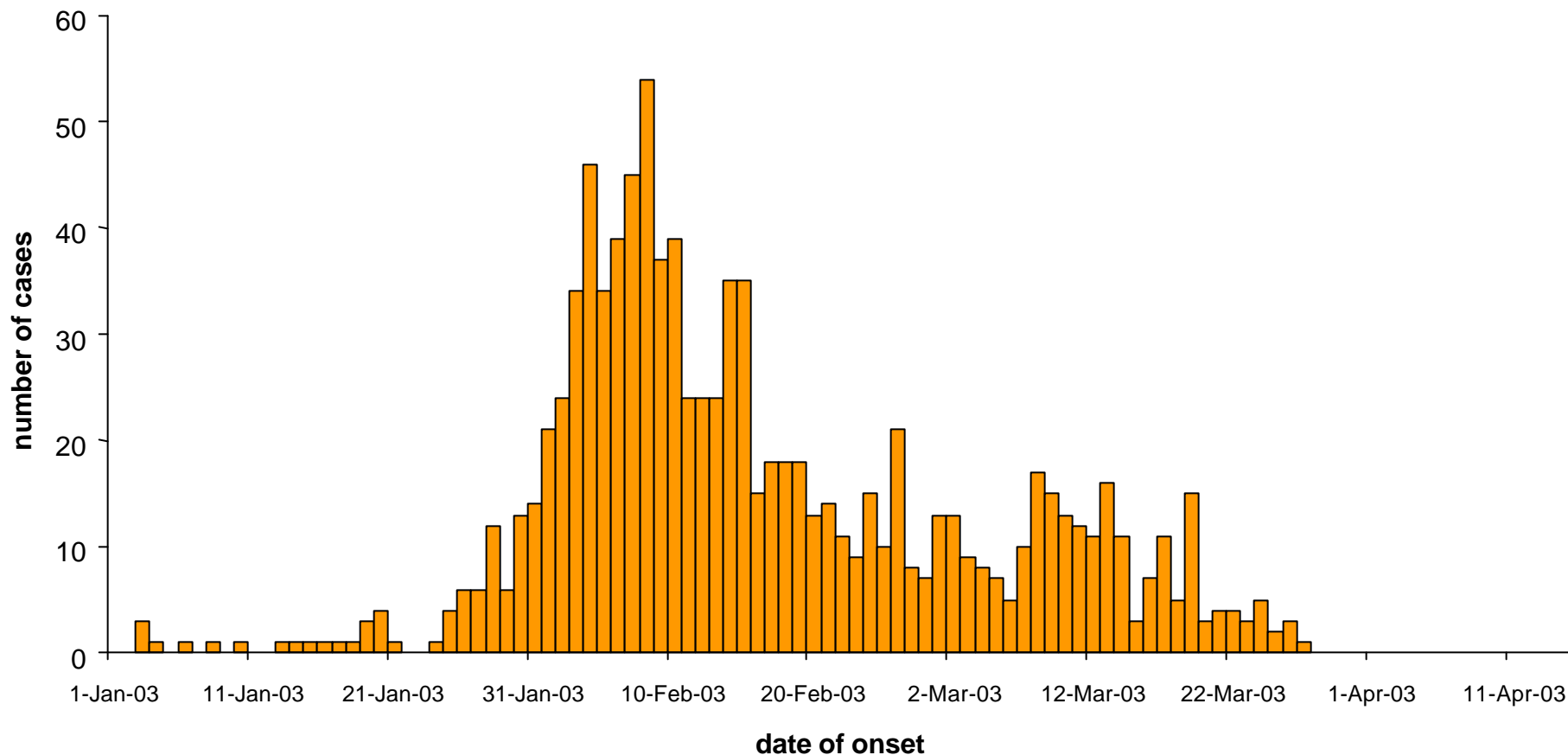


* Includes all cases from Hong Kong SAR and Taiwan, China, but only those cases elsewhere in China reported after 3 April 2003 (1,190 cases between 16 November 2002 and 3 April 2003 not shown).
The United States of America began reporting probable cases of SARS to WHO on 20 April 2003.

Probable cases of SARS by date of onset

China (n=1,001*)

1 January - 31 March 2003

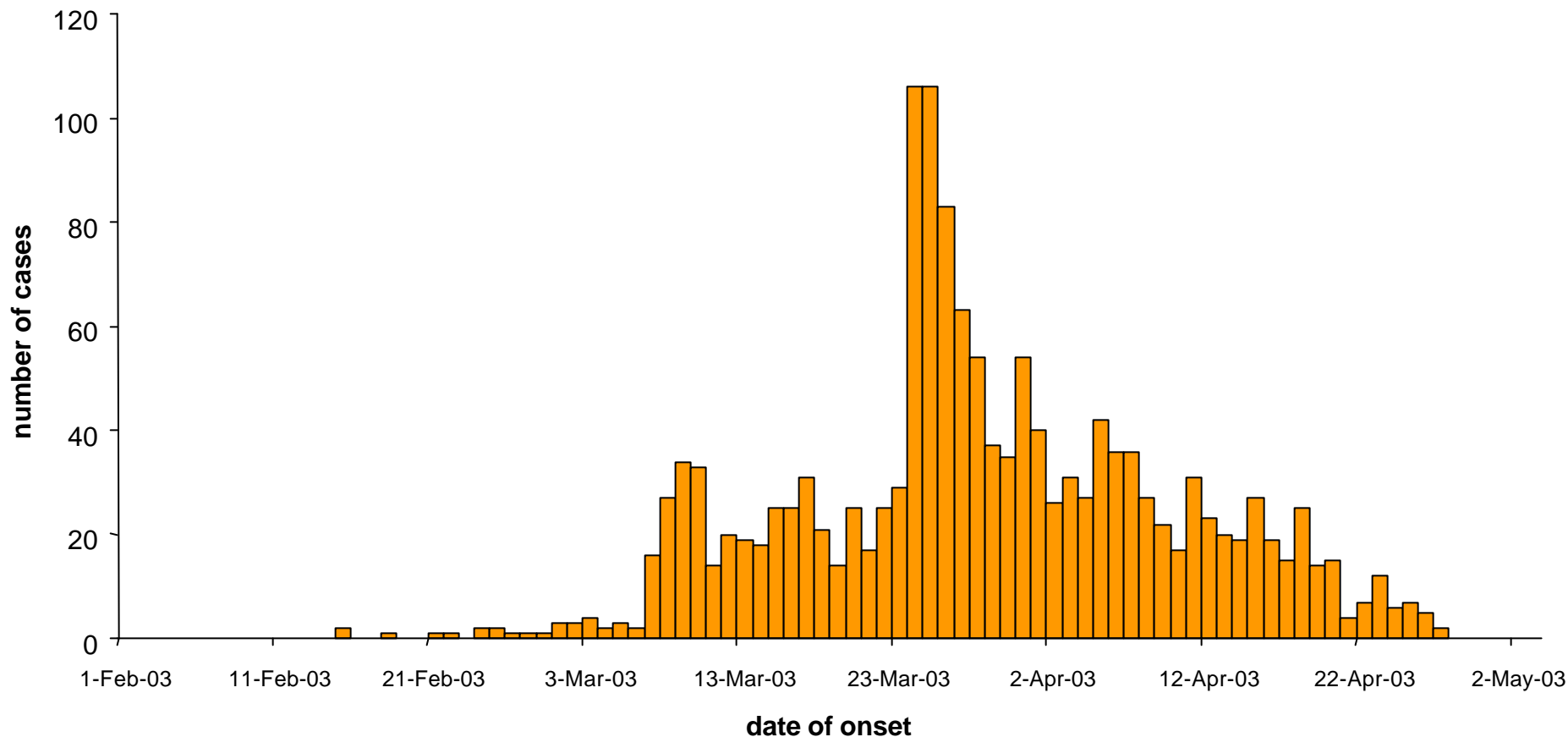


* Includes only probable cases of SARS with known dates of onset from Guangzhou City (Guangdong Province).

As of 2 May 2003 an additional 2,798 probable cases of SARS have been reported from China for whom no dates of onset are available.

Source: Ministry of Health, China, WHO

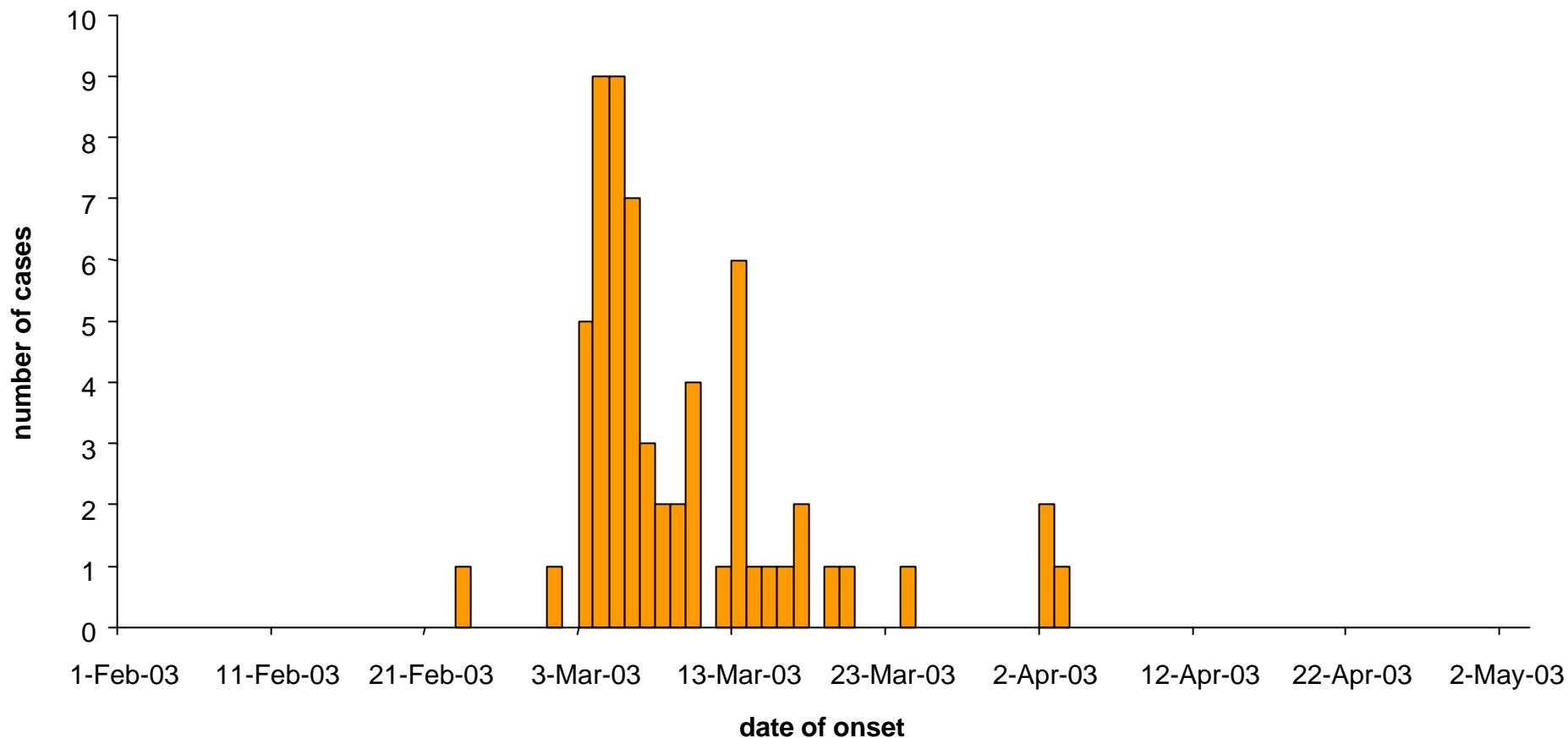
Probable cases of SARS by date of onset
Hong Kong SAR, China (n=1,515*)
1 February - 2 May 2003



* As of 2 May 2003 an additional 96 probable cases of SARS have been reported from Hong Kong Special Administrative Region of China for whom no dates of onset are available.

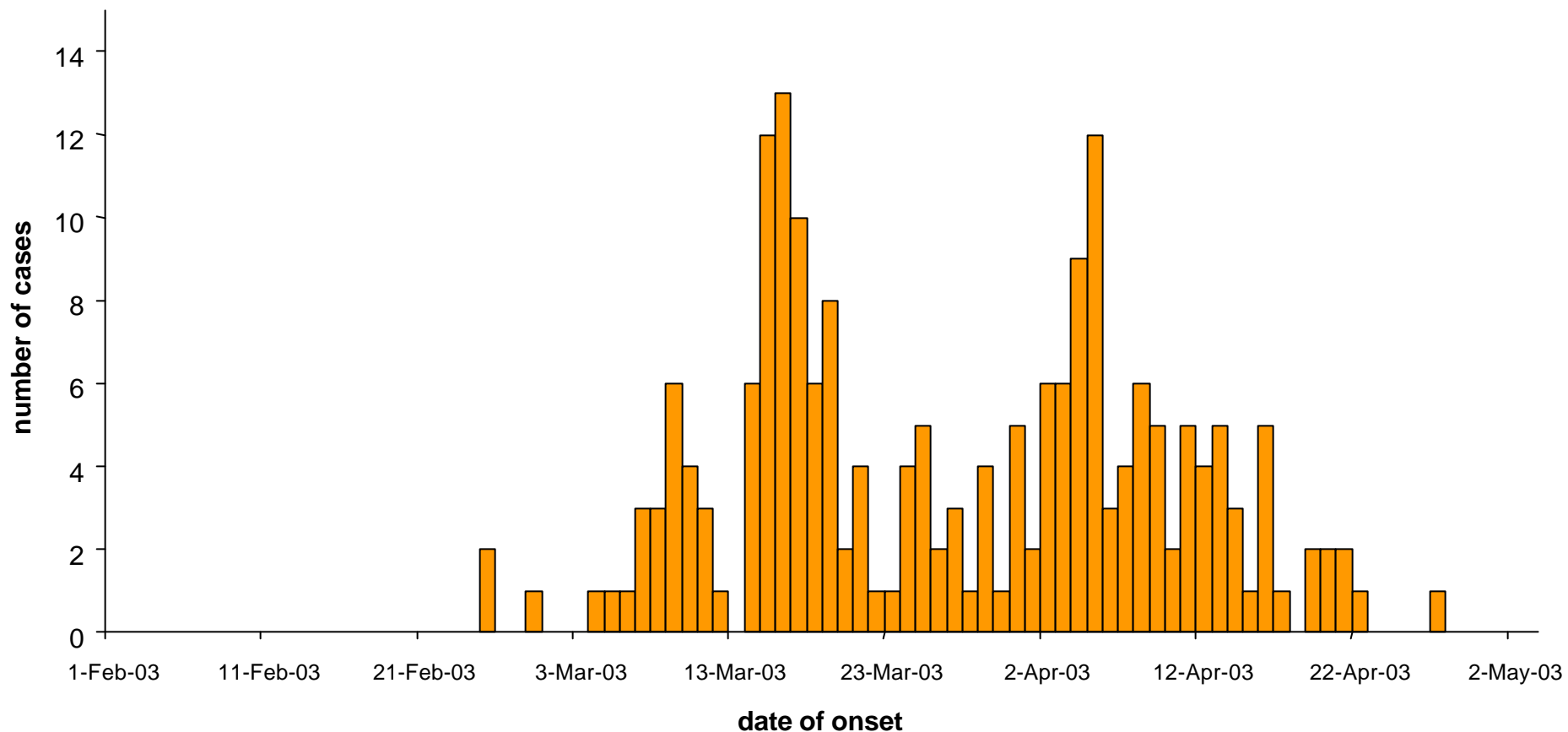
Source: Department of Health, Hong Kong Special Administrative Region of China

Probable Cases of SARS by date of onset
Viet Nam (n=61*)
1 February - 7 April 2003



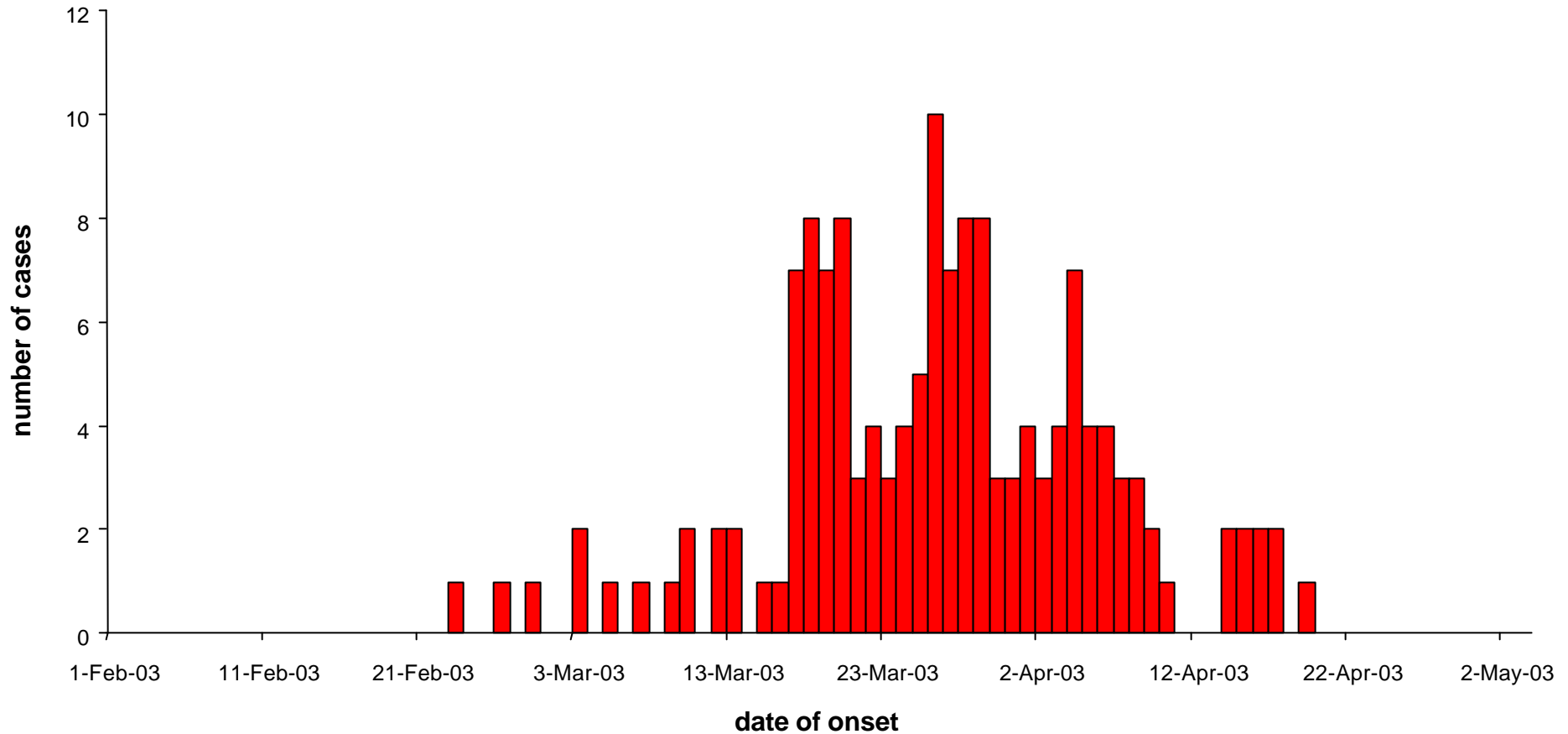
* As of 2 May 2003 an additional 2 probable cases of SARS have been reported from Viet Nam for whom no dates of onset are available.
Source: Ministry of Health, Viet Nam, WHO

Probable cases of SARS by date of onset
Singapore (n=201*)
1 February - 2 May 2003



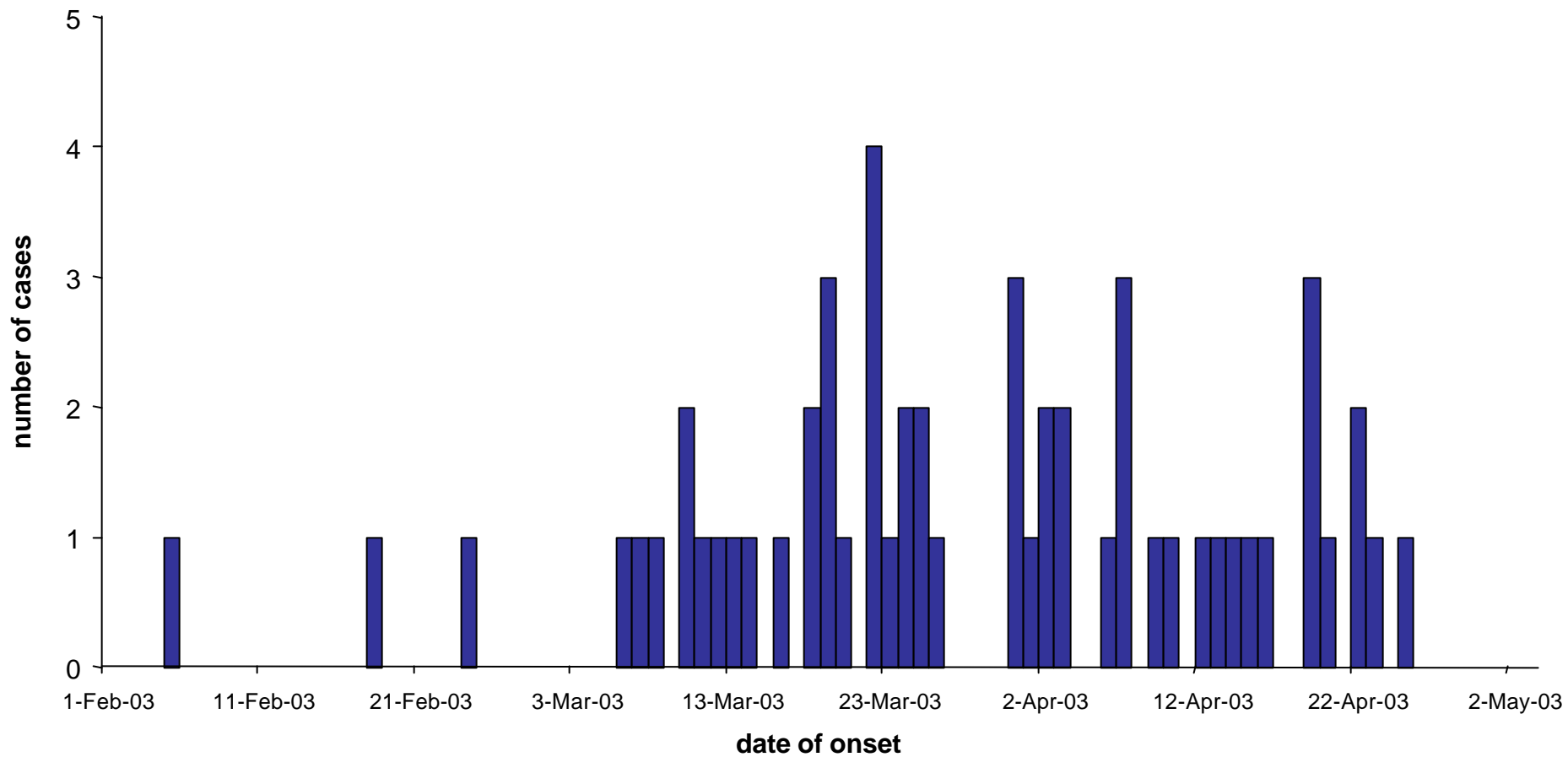
* As of 2 May 2003 an additional 2 probable cases of SARS have been reported from Singapore for whom no dates of onset are available.
 Source: Ministry of Health, Singapore, WHO

**Probable cases of SARS by date of onset
Canada (n=148*)
1 February - 2 May 2003**



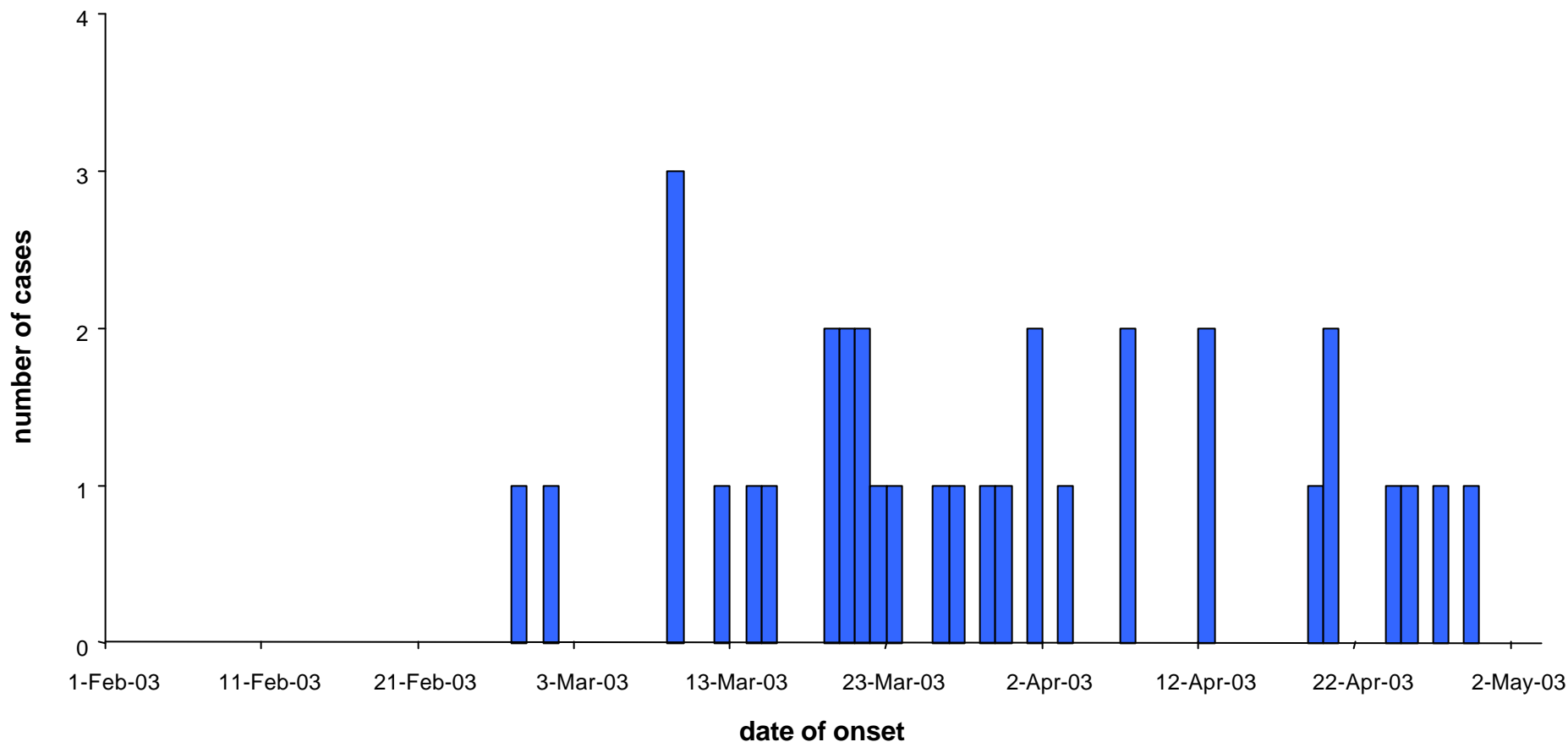
* As of 2 May 2003 an additional probable case of SARS has been reported from Canada for whom no date of onset is available.
Source: Health Canada

**Probable cases of SARS by date of onset
United States (n=56)
1 February - 2 May 2003**



Source: MMWR, May 2, 2003 / Vol. 52 / No. 17

**Probable cases of SARS by date of onset
WHO European Region (n=34*)
1 February - 2 May 2003**



* As of 2 May 2003 an additional 2 probable cases of SARS have been reported from countries in the WHO European Region for whom no dates of onset are available.

Source: WHO EURO