

# Côte d'Ivoire: health profile

Selected indicators (2010)

|   |  | Country    | Regional average | Global average |     |
|---|--|------------|------------------|----------------|-----|
| General   | Total population (thousands)   | 19 738     | ...              | ...            |     |
|   | Population living in urban areas (%)   | 51         | 38               | 50             |     |
|   | Gross national income per capita (PPP int. \$)   | 1 810      | 2 448            | 10 869         |     |
| Mortality and burden of disease                     | Life expectancy at birth* (years)  | Male       | 49               | 52             | 66  |
|   |  | Female     | 52               | 56             | 71  |
|   |  | Both sexes | 50               | 54             | 68  |
|   | Under-five mortality rate (per 1000 live births)   | Both sexes | 123              | 119            | 57  |
|   | Adult mortality rate* (probability of dying between 15 and 60 years per 1000 population) | Both sexes | 495              | 383            | 176 |
|   | Maternal mortality ratio (per 100 000 live births)                                       |            | 400              | 480            | 210 |
|   | Prevalence of HIV* (per 1000 adults aged 15 to 49)                                       |            | 34               | 47             | 8   |
| Prevalence of tuberculosis (per 100 000 population) |  | 156        | 332              | 178            |     |

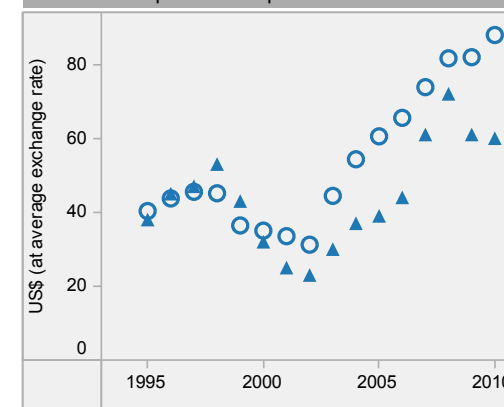
Côte d'Ivoire is located in the WHO African Region.

▲ Country  
○ Regional average

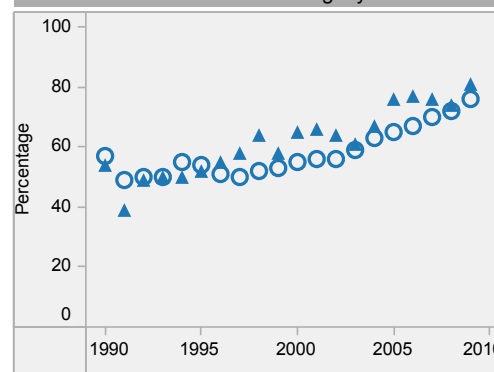
\* Data refers to 2009.

Last update: May 2012.

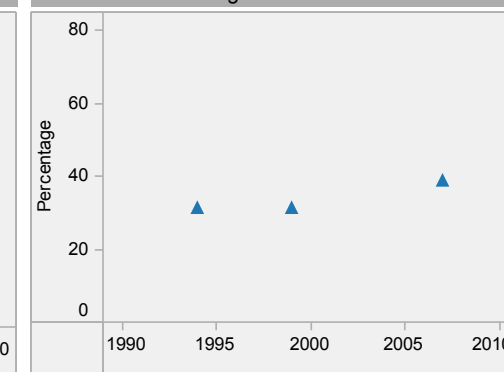
Per capita total expenditure on health



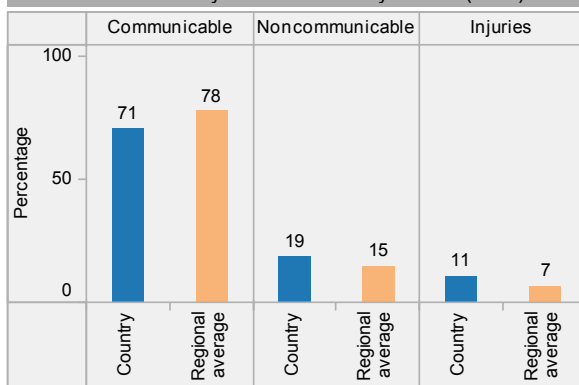
DTP3 immunization among 1-year-olds



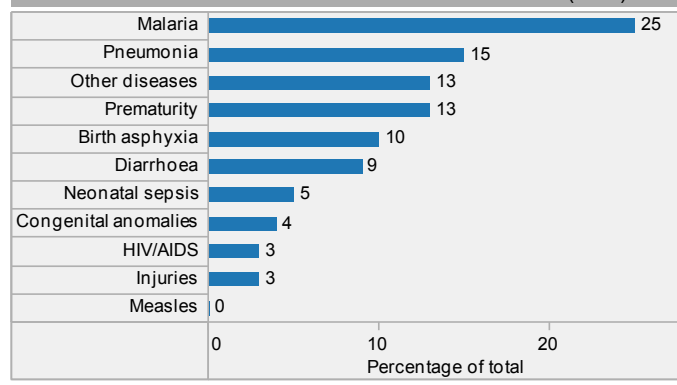
Children aged under-5 stunted



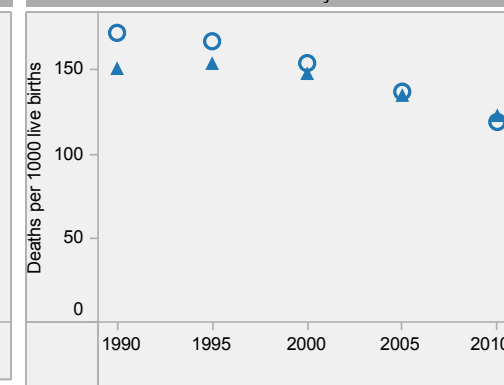
Distribution of years of life lost by causes (2008)



Distribution of causes of deaths in children under-5 (2010)

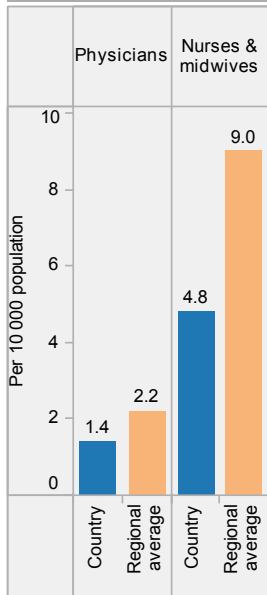


Under-5 mortality rate

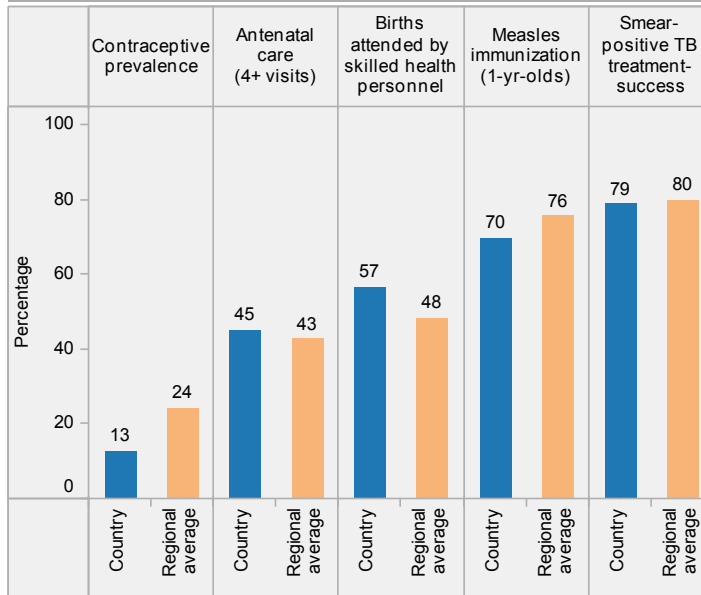


# Côte d'Ivoire: health profile

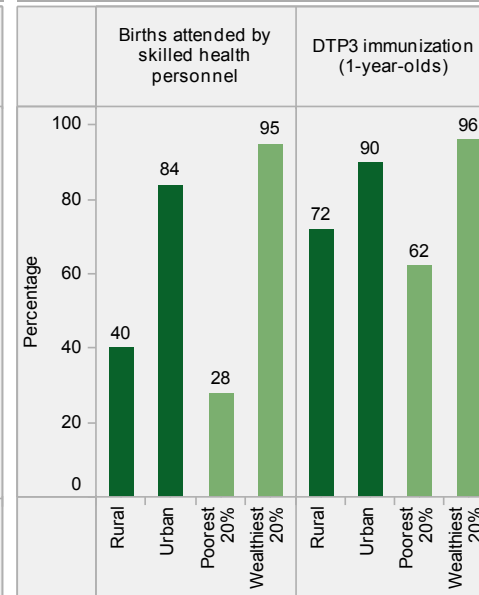
## Health workforce\*



## Utilisation of health services\*

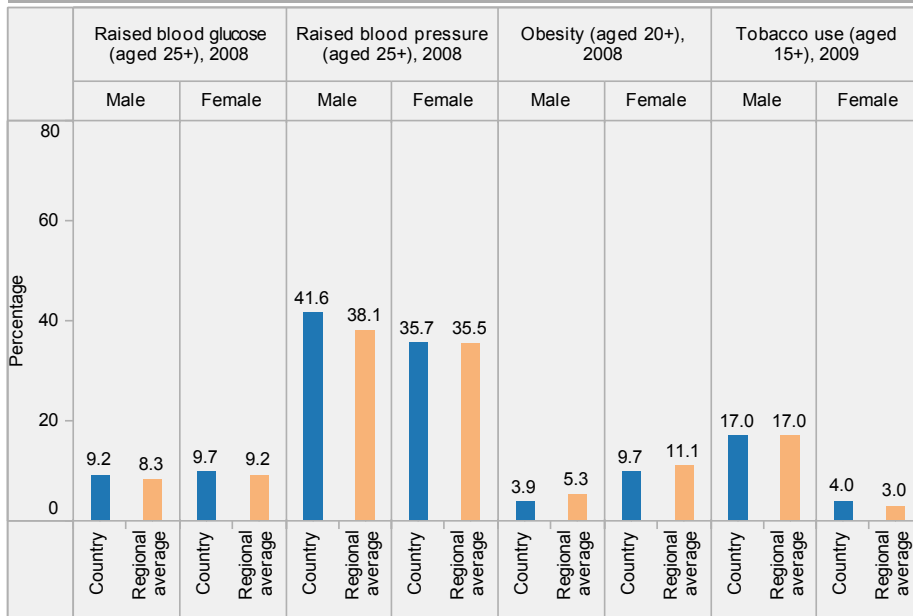


## Inequities in health service utilization\*\*

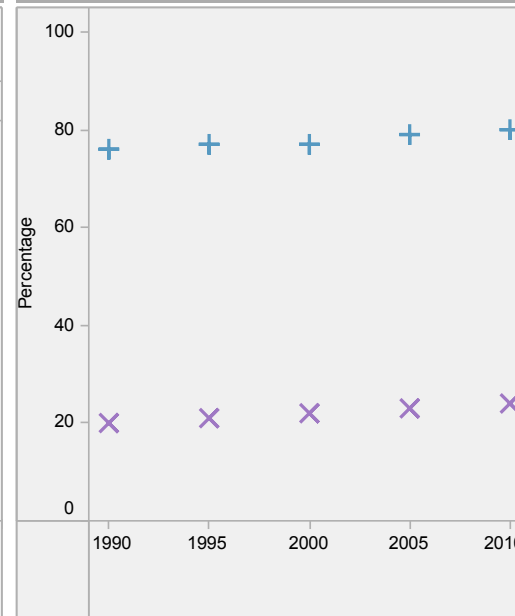


## Inequities in mortality\*\*

## Adult risk factors



## Population using improved water and sanitation



Côte d'Ivoire is located in the WHO African Region.

\* Data refer to latest year available from 2005. For specific years and references, visit the Global Health Observatory at [www.who.int/gho](http://www.who.int/gho).

\*\* For data source and year, see the World Health Statistics 2012.

### Population using improved water and sanitation

- + Improved drinking-water sources
- × Improved sanitation facilities

Last update: May 2012.