

# Democratic Republic of the Congo: health profile

Selected indicators (2010)

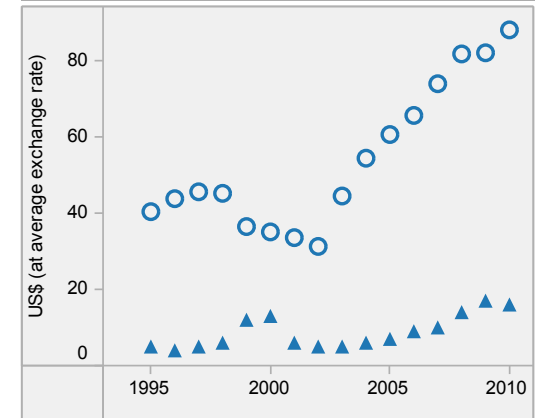
	Country	Regional average	Global average	
<b>General</b>				
Total population (thousands)	65 966	...	...	
Population living in urban areas (%)	35	38	50	
Gross national income per capita (PPP int. \$)	320	2 448	10 869	
<b>Mortality and burden of disease</b>				
Life expectancy at birth* (years)	Male	47	52	66
	Female	51	56	71
	Both sexes	49	54	68
Under-five mortality rate (per 1000 live births)	Both sexes	170	119	57
Adult mortality rate* (probability of dying between 15 and 60 years per 1000 population)	Both sexes	387	383	176
Maternal mortality ratio (per 100 000 live births)		540	480	210
Prevalence of tuberculosis (per 100 000 population)		535	332	178

Democratic Republic of the Congo is located in the WHO African Region.

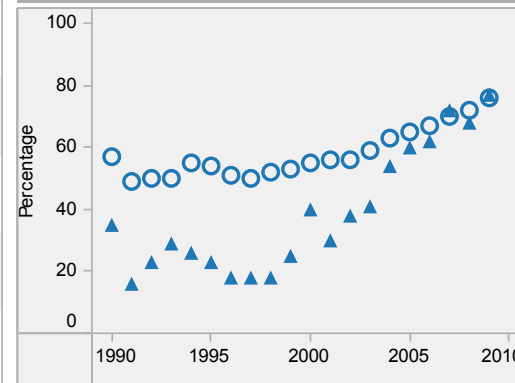
▲ Country  
○ Regional average  
\* Data refers to 2009.

Last update: May 2012.

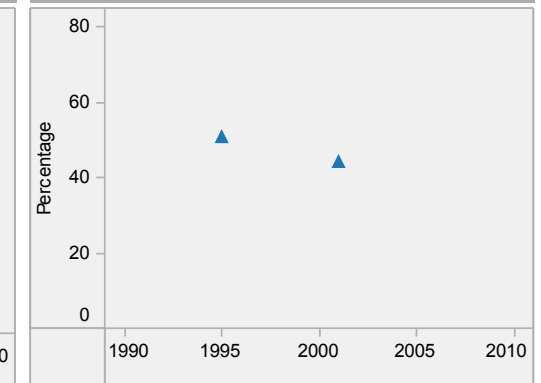
Per capita total expenditure on health



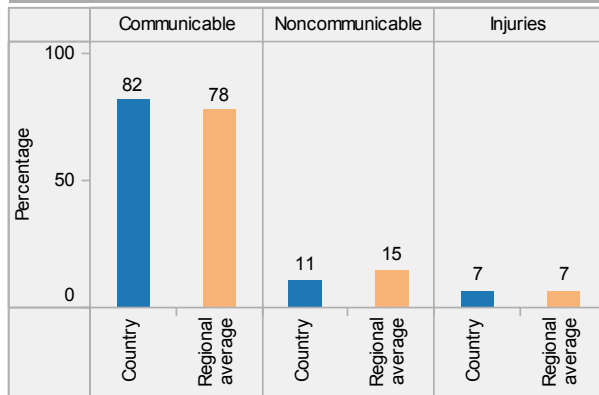
DTP3 immunization among 1-year-olds



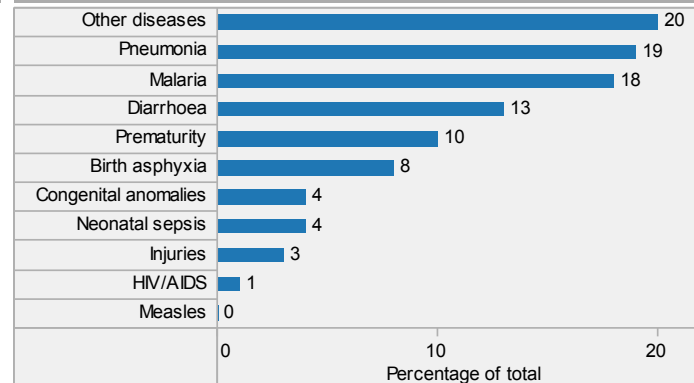
Children aged under-5 stunted



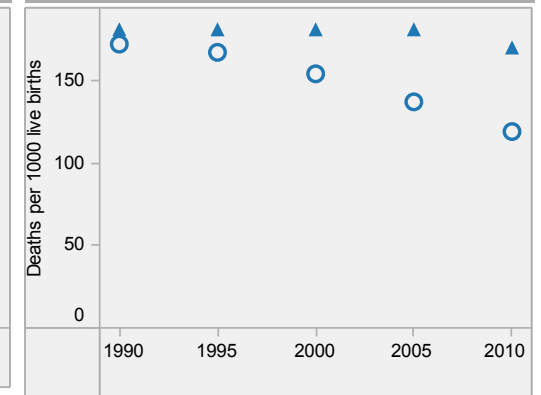
Distribution of years of life lost by causes (2008)



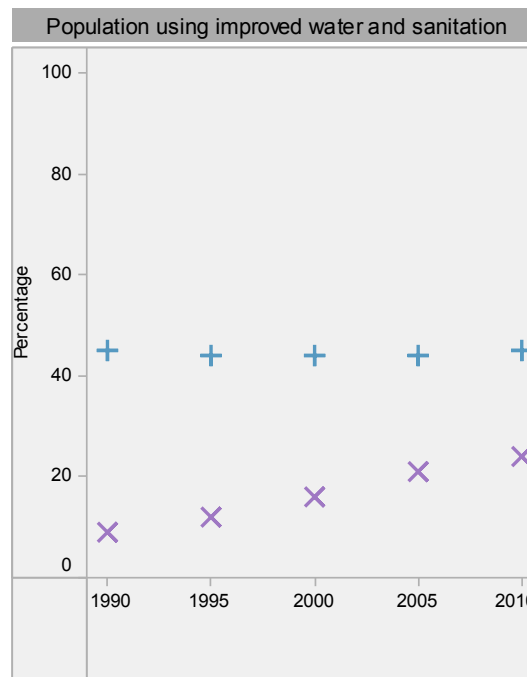
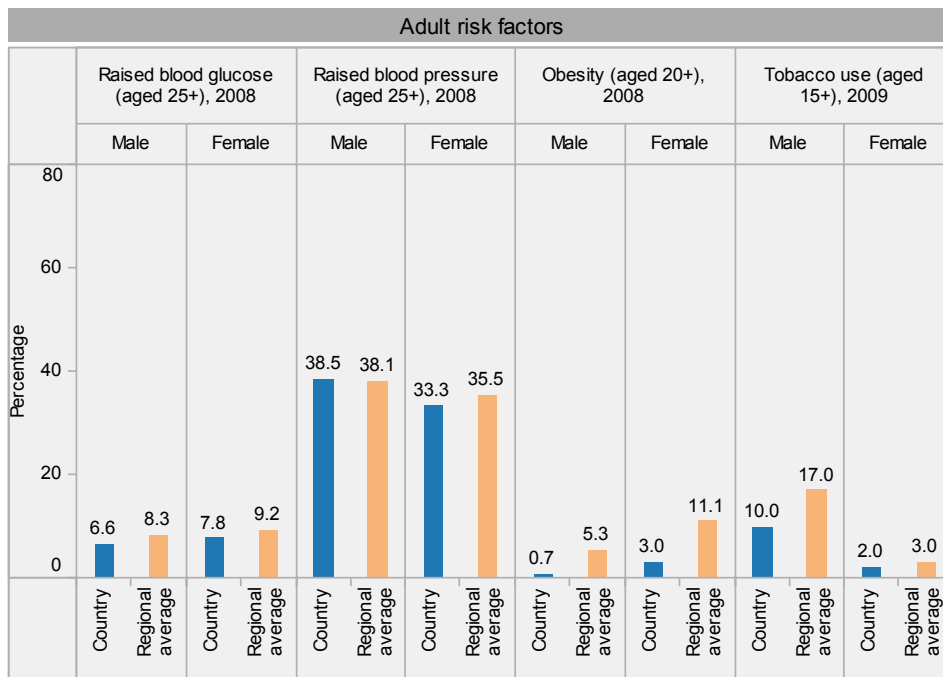
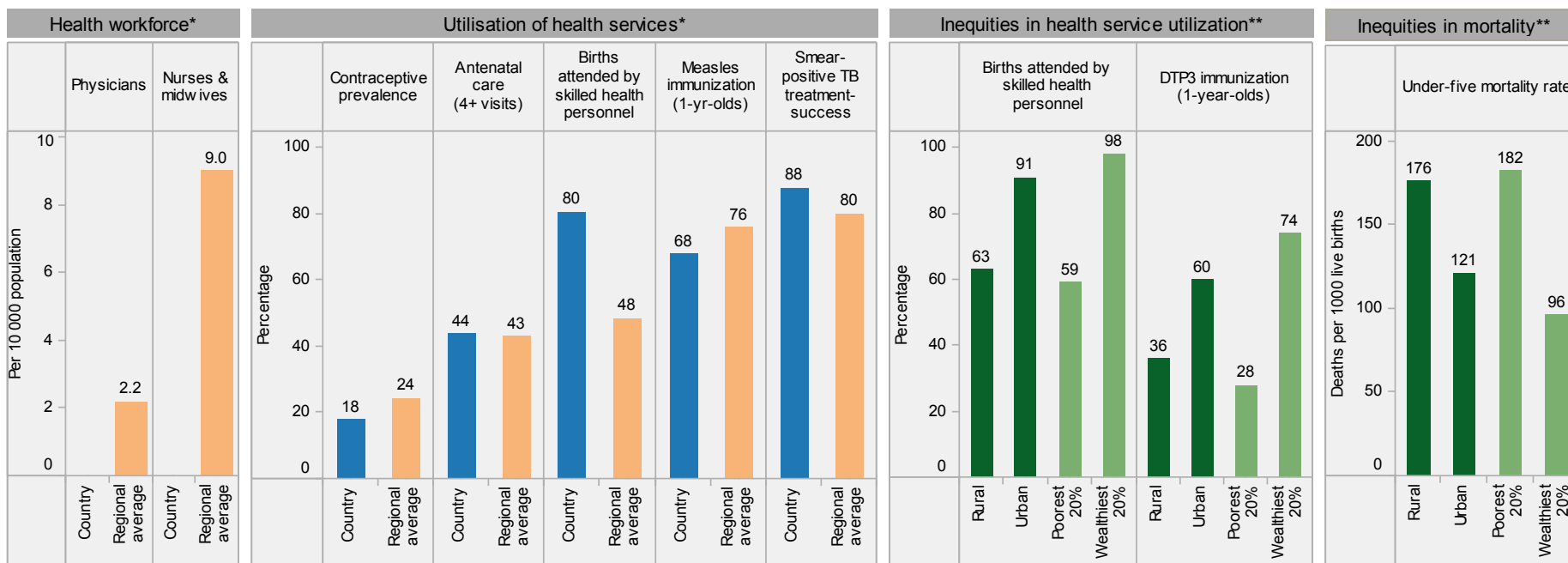
Distribution of causes of deaths in children under-5 (2010)



Under-5 mortality rate



# Democratic Republic of the Congo: health profile



Democratic Republic of the Congo is located in the WHO African Region.

\* Data refer to latest year available from 2005. For specific years and references, visit the Global Health Observatory at [www.who.int/gho](http://www.who.int/gho).

\*\* For data source and year, see the World Health Statistics 2012.

**Population using improved water and sanitation**  
 + Improved drinking-water sources  
 x Improved sanitation facilities

Last update: May 2012.