

Marshall Islands: health profile



Selected indicators (2010)

		Country	Regional average	Global average	
General	Total population (thousands)	54	
	Population living in urban areas (%)	72	50	50	
Mortality and burden of disease	Life expectancy at birth* (years)	Male	58	72	66
		Female	60	77	71
		Both sexes	59	75	68
	Under-five mortality rate (per 1000 live births)	Both sexes	26	19	57
	Adult mortality rate* (probability of dying between 15 and 60 years per 1000 population)	Both sexes	407	116	176
Prevalence of tuberculosis (per 100 000 population)		831	139	178	

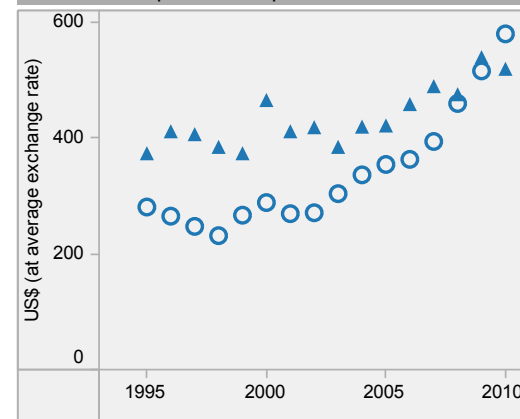
Marshall Islands is located in the WHO Western Pacific Region.

▲ Country
○ Regional average

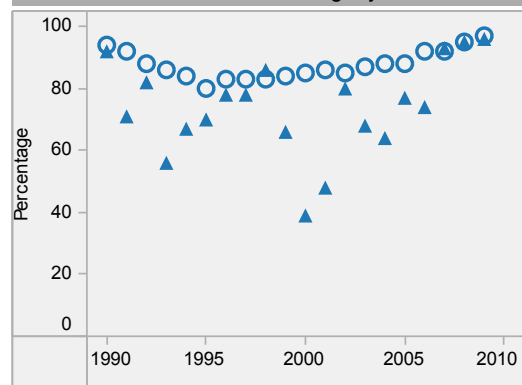
* Data refers to 2009.

Last update: May 2012.

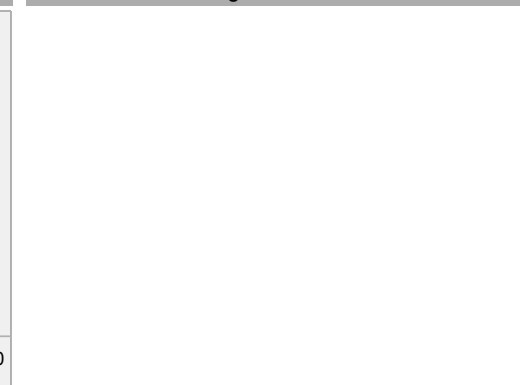
Per capita total expenditure on health



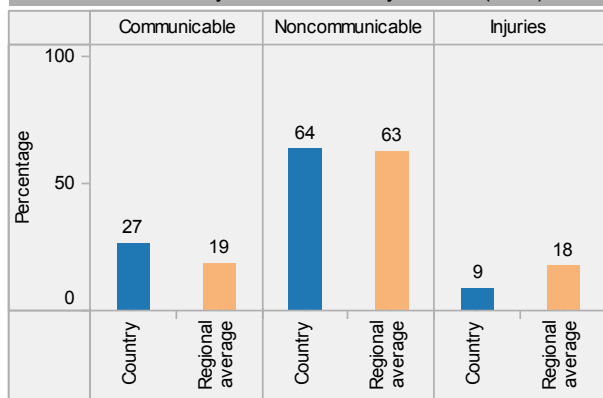
DTP3 immunization among 1-year-olds



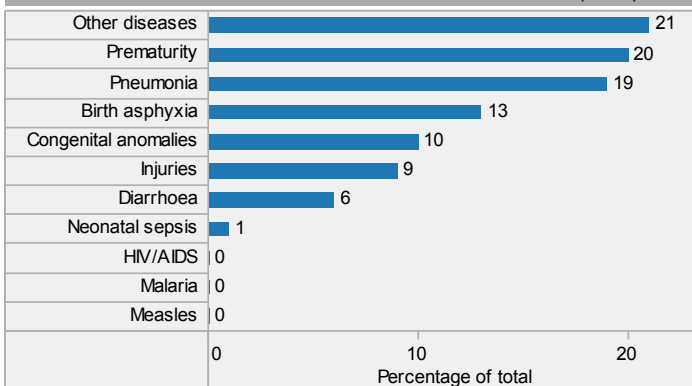
Children aged under-5 stunted



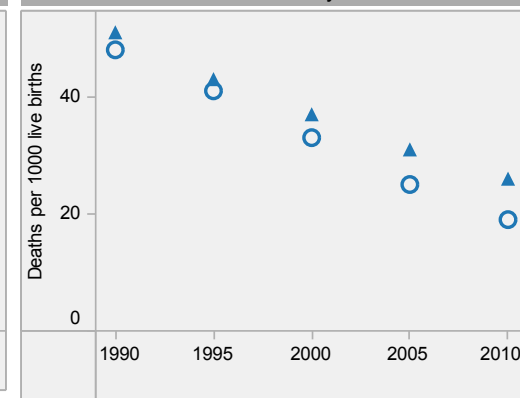
Distribution of years of life lost by causes (2008)



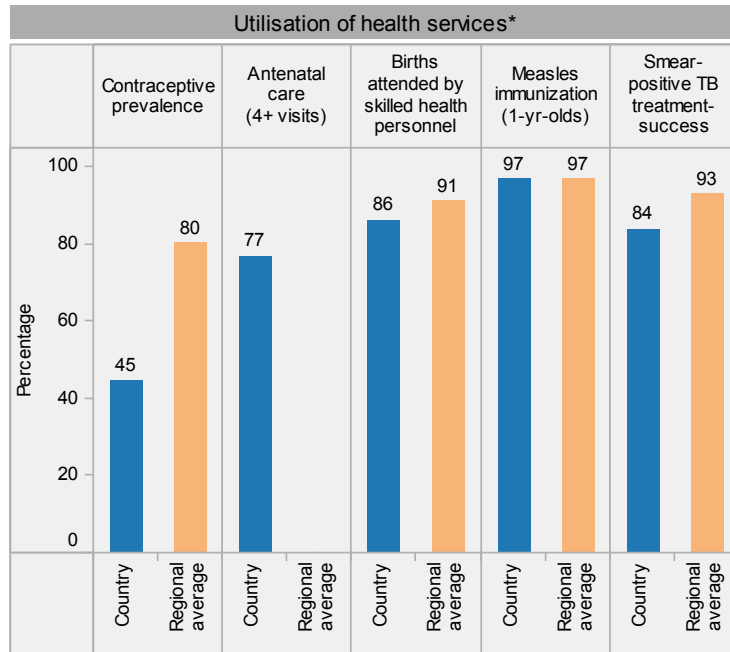
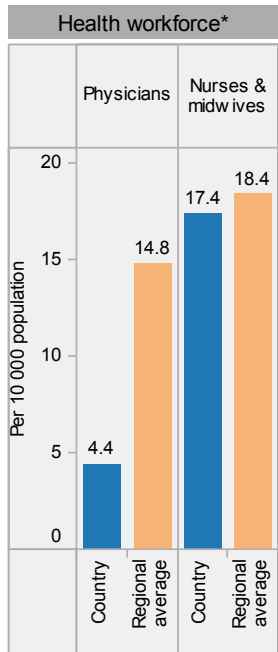
Distribution of causes of deaths in children under-5 (2010)



Under-5 mortality rate

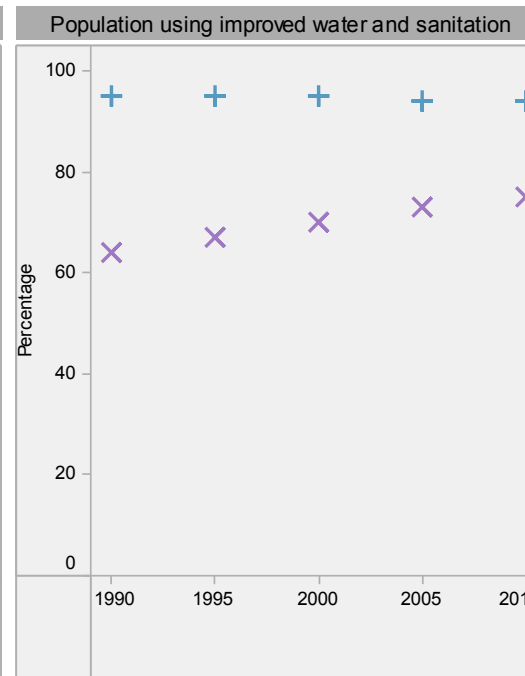
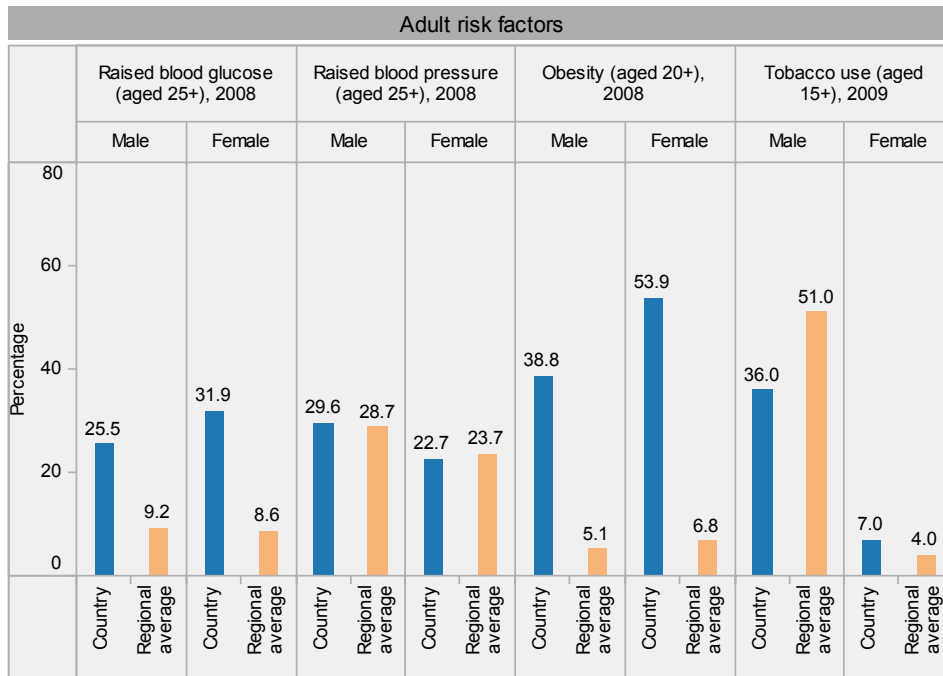


Marshall Islands: health profile



Inequities in health service utilization**

Inequities in mortality**



Marshall Islands is located in the WHO Western Pacific Region.

* Data refer to latest year available from 2005. For specific years and references, visit the Global Health Observatory at www.who.int/gho.

** For data source and year, see the World Health Statistics 2012.

Population using improved water and sanitation
 + Improved drinking-water sources
 x Improved sanitation facilities

Last update: May 2012.