

# Malaysia: health profile

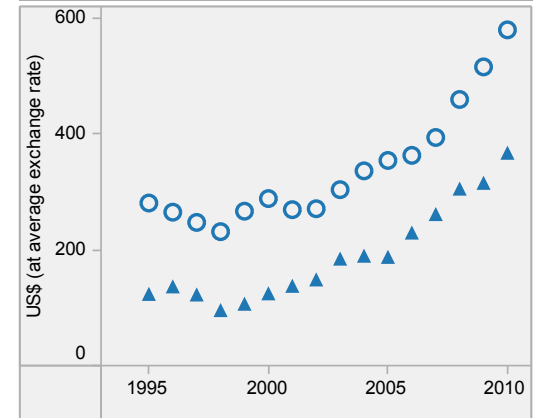
Selected indicators (2010)

|                                 |  | Country    | Regional average | Global average |     |
|---------------------------------|--|------------|------------------|----------------|-----|
| General                         | Total population (thousands)   | 28 401     | ...              | ...            |     |
|                                 | Population living in urban areas (%)   | 72         | 50               | 50             |     |
|                                 | Gross national income per capita (PPP int. \$)   | 14 220     | 10 218           | 10 869         |     |
| Mortality and burden of disease | Life expectancy at birth* (years)  | Male       | 71               | 72             | 66  |
|                                 |  | Female     | 76               | 77             | 71  |
|                                 |  | Both sexes | 73               | 75             | 68  |
|                                 | Under-five mortality rate (per 1000 live births)   | Both sexes | 6                | 19             | 57  |
|                                 | Adult mortality rate* (probability of dying between 15 and 60 years per 1000 population) | Both sexes | 137              | 116            | 176 |
|                                 | Maternal mortality ratio (per 100 000 live births)                                       |            | 29               | 49             | 210 |
|                                 | Prevalence of HIV* (per 1000 adults aged 15 to 49)                                       |            | 5                | 1              | 8   |
|                                 | Prevalence of tuberculosis (per 100 000 population)                                      | 107        | 139              | 178            |     |

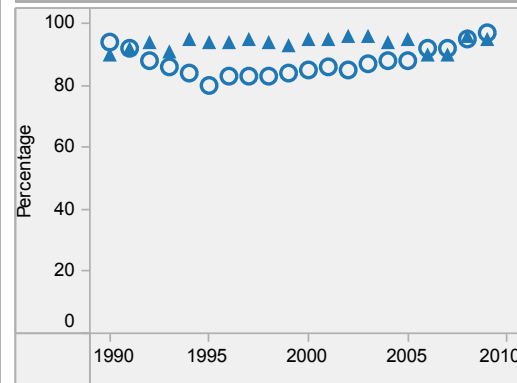
Malaysia is located in the WHO Western Pacific Region.

▲ Country  
○ Regional average  
\* Data refers to 2009.  
Last update: May 2012.

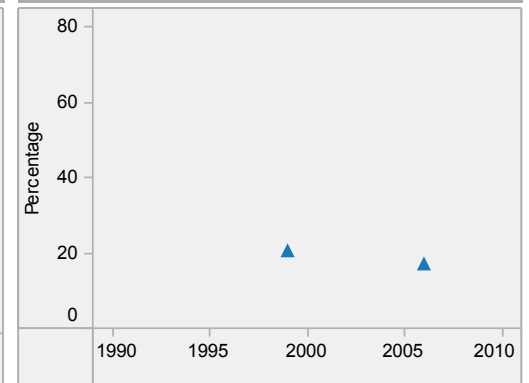
Per capita total expenditure on health



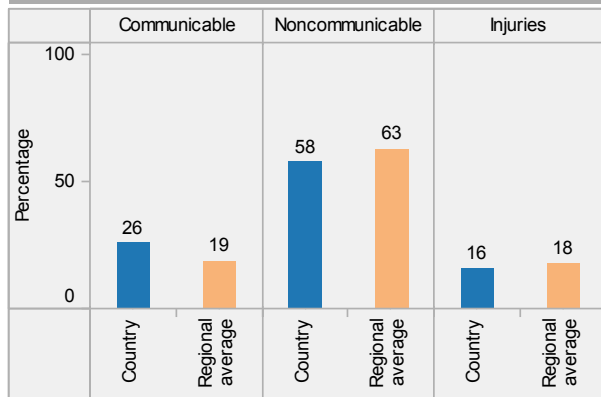
DTP3 immunization among 1-year-olds



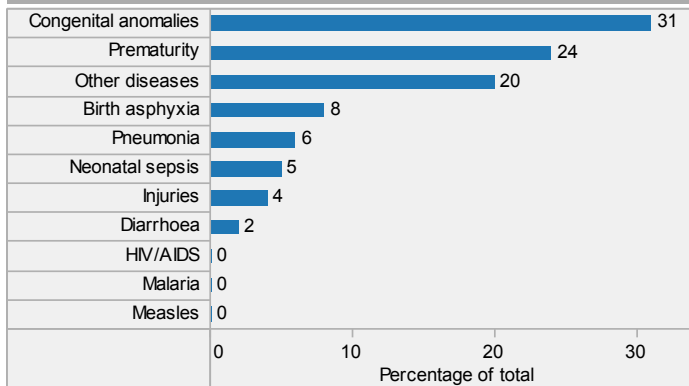
Children aged under-5 stunted



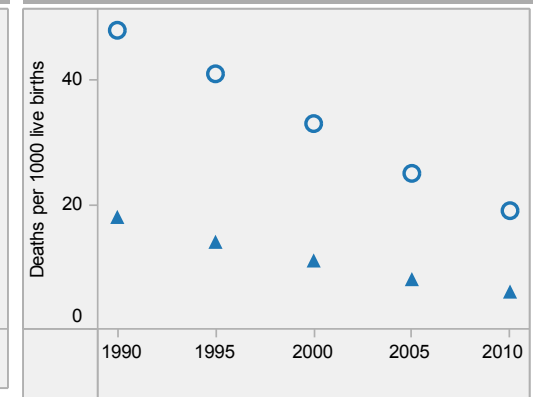
Distribution of years of life lost by causes (2008)



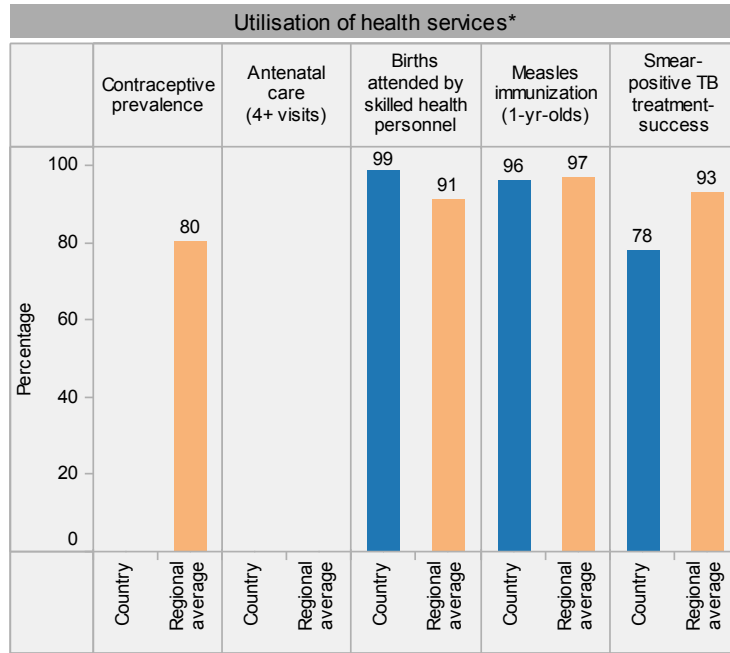
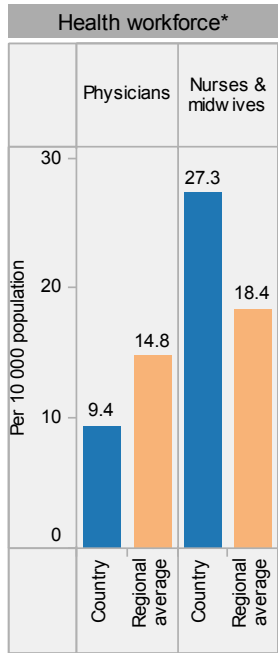
Distribution of causes of deaths in children under-5 (2010)



Under-5 mortality rate

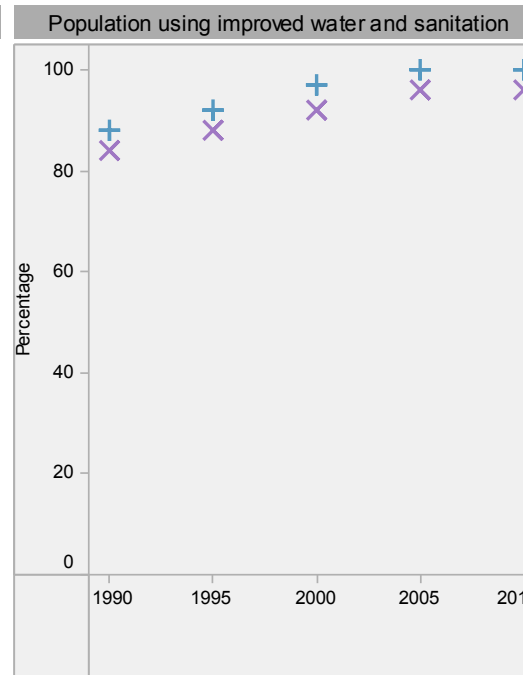
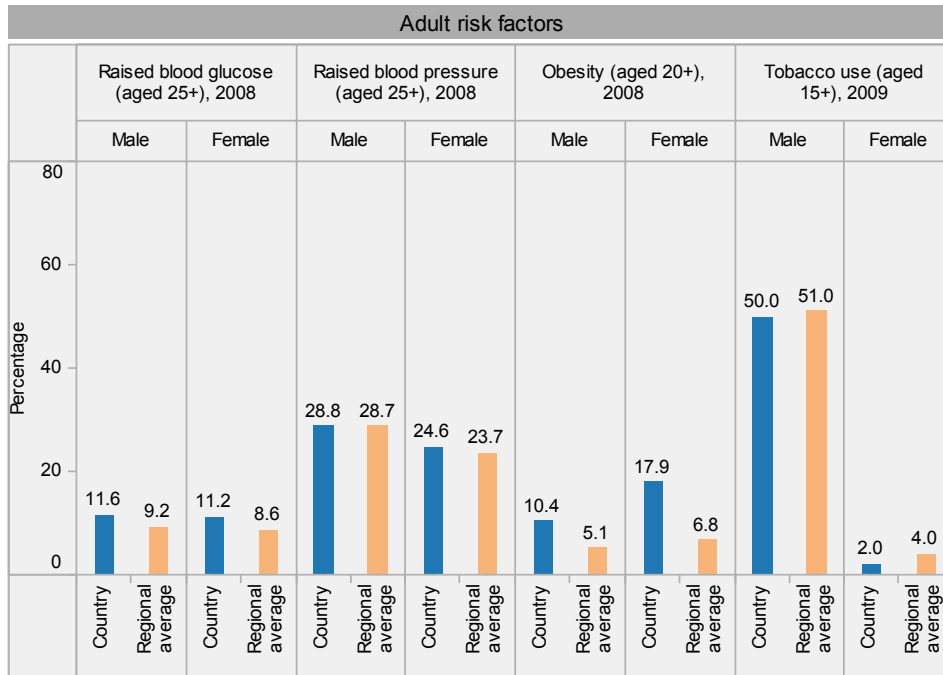


# Malaysia: health profile



### Inequities in health service utilization\*\*

### Inequities in mortality\*\*



Malaysia is located in the WHO Western Pacific Region.

\* Data refer to latest year available from 2005. For specific years and references, visit the Global Health Observatory at [www.who.int/gho](http://www.who.int/gho).

\*\* For data source and year, see the World Health Statistics 2012.

**Population using improved water and sanitation**  
 + Improved drinking-water sources  
 X Improved sanitation facilities

Last update: May 2012.