

Palau: health profile

Selected indicators (2010)

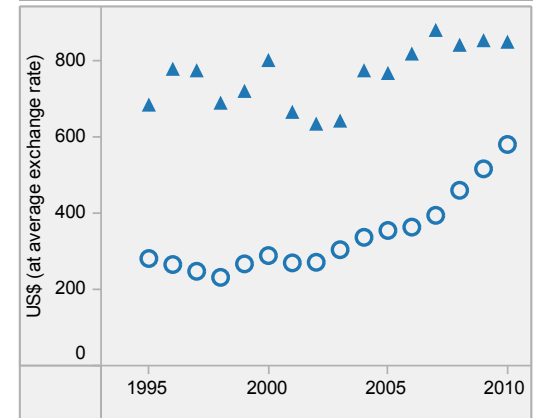
	Country	Regional average	Global average	
General				
Total population (thousands)	20	
Population living in urban areas (%)	83	50	50	
Gross national income per capita (PPP int. \$)	11 000	10 218	10 869	
Mortality and burden of disease				
Life expectancy at birth* (years)	Male	68	72	66
	Female	77	77	71
	Both sexes	72	75	68
Under-five mortality rate (per 1000 live births)	Both sexes	19	19	57
Adult mortality rate* (probability of dying between 15 and 60 years per 1000 population)	Both sexes	172	116	176
Prevalence of tuberculosis (per 100 000 population)	179	139	178	

Palau is located in the WHO Western Pacific Region.

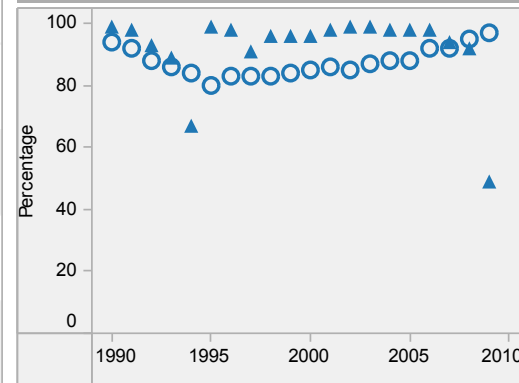
▲ Country
○ Regional average
* Data refers to 2009.

Last update: May 2012.

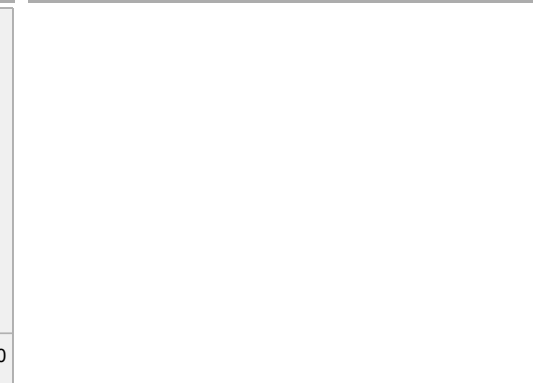
Per capita total expenditure on health



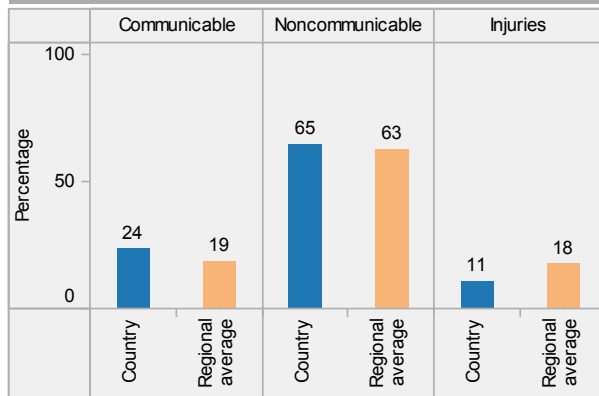
DTP3 immunization among 1-year-olds



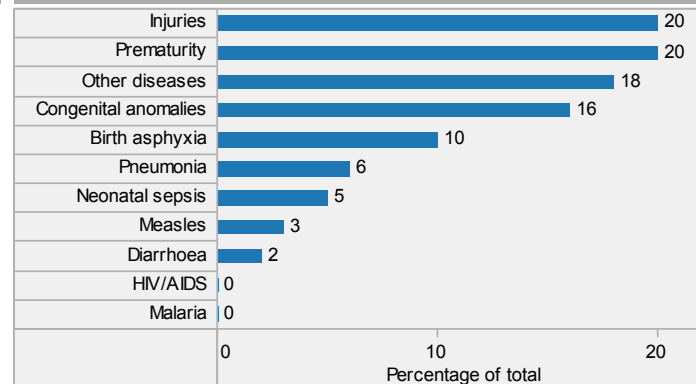
Children aged under-5 stunted



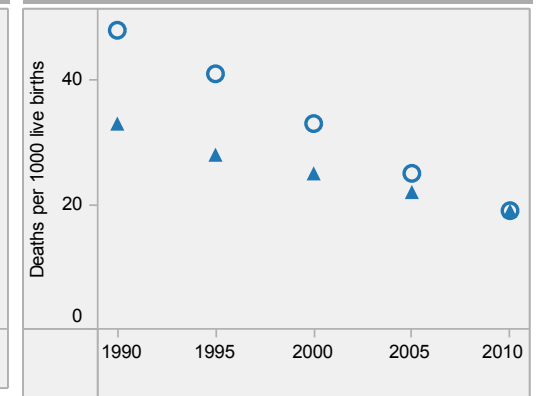
Distribution of years of life lost by causes (2008)



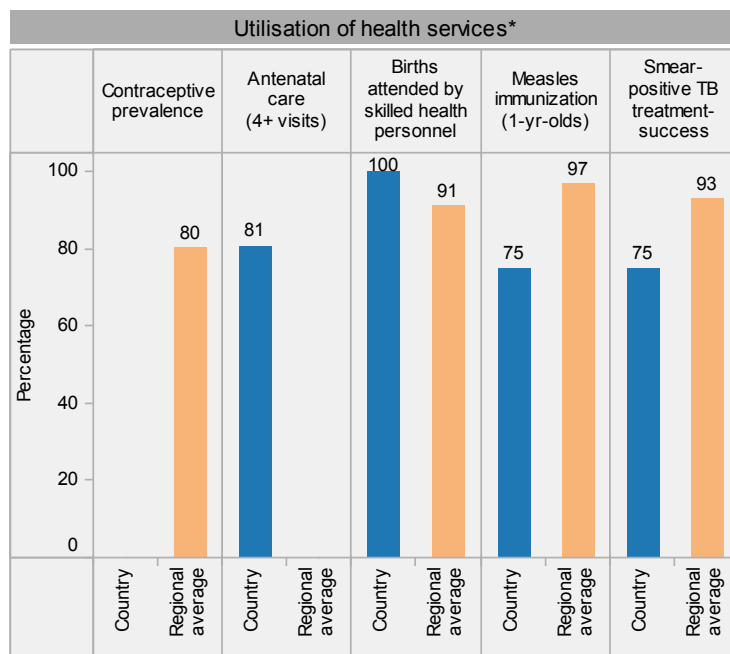
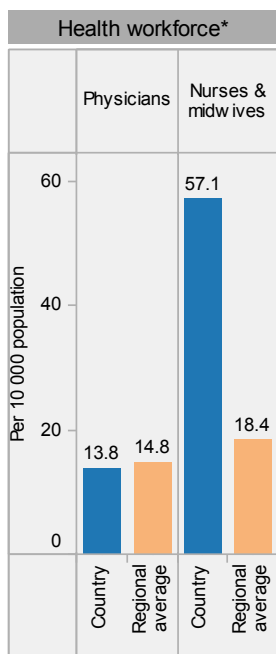
Distribution of causes of deaths in children under-5 (2010)



Under-5 mortality rate

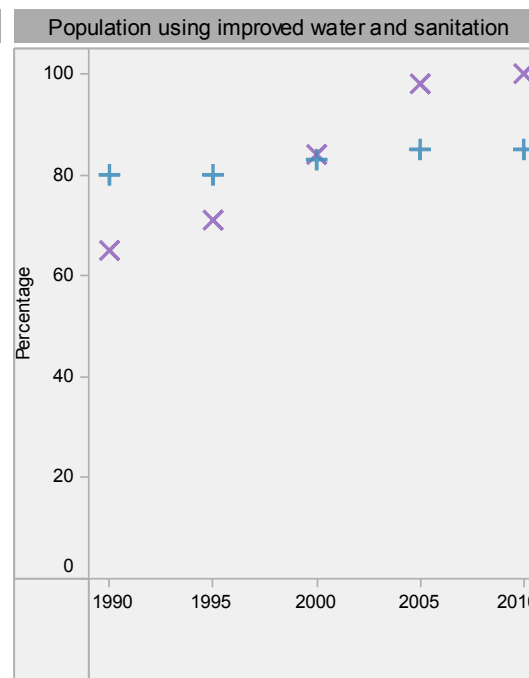
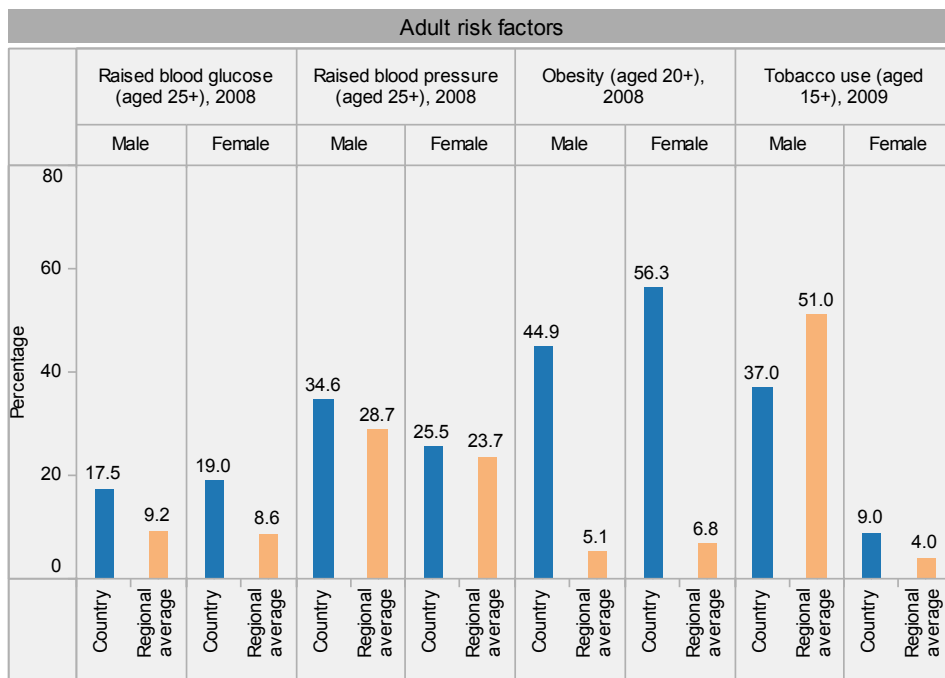


Palau: health profile



Inequities in health service utilization**

Inequities in mortality**



Palau is located in the WHO Western Pacific Region.

* Data refer to latest year available from 2005. For specific years and references, visit the Global Health Observatory at www.who.int/gho.

** For data source and year, see the World Health Statistics 2012.

Population using improved water and sanitation
 + Improved drinking-water sources
 x Improved sanitation facilities

Last update: May 2012.