

# Somalia: health profile

Selected indicators (2010)

		Country	Regional average	Global average	
General	Total population (thousands)	9 331	...	...	
	Population living in urban areas (%)	37	50	50	
Mortality and burden of disease	Life expectancy at birth* (years)	Male	51	64	66
		Female	51	67	71
		Both sexes	51	66	68
	Under-five mortality rate (per 1000 live births)	Both sexes	180	68	57
	Adult mortality rate* (probability of dying between 15 and 60 years per 1000 population)	Both sexes	366	188	176
	Maternal mortality ratio (per 100 000 live births)		1 000	250	210
	Prevalence of HIV* (per 1000 adults aged 15 to 49)	7	2	8	
	Prevalence of tuberculosis (per 100 000 population)	513	173	178	

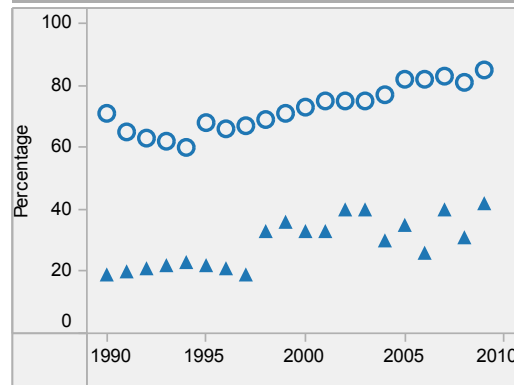
Somalia is located in the WHO Eastern Mediterranean Region.

▲ Country  
○ Regional average  
\* Data refers to 2009.

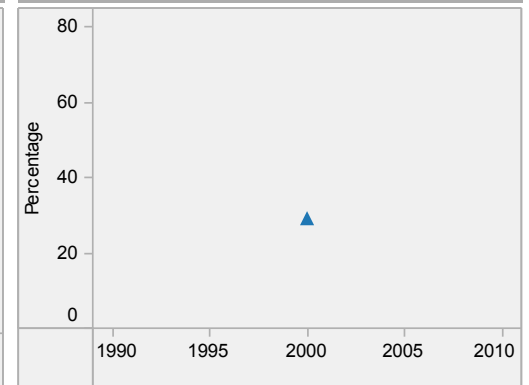
Last update: May 2012.

Per capita total expenditure on health

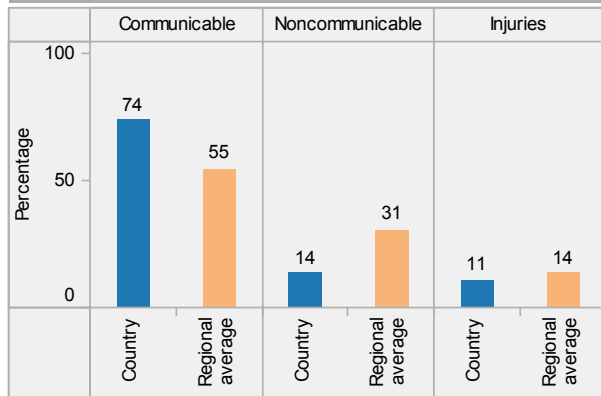
DTP3 immunization among 1-year-olds



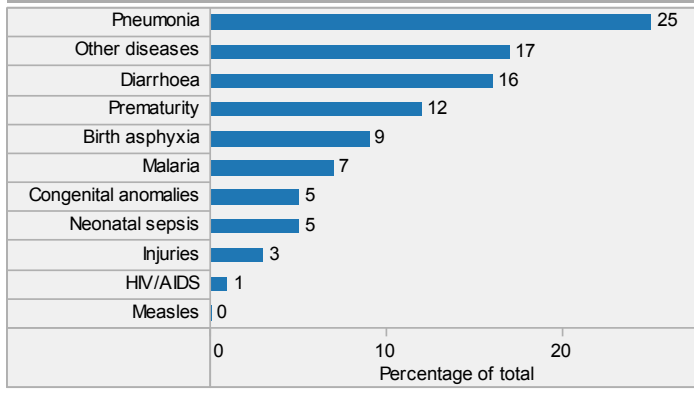
Children aged under-5 stunted



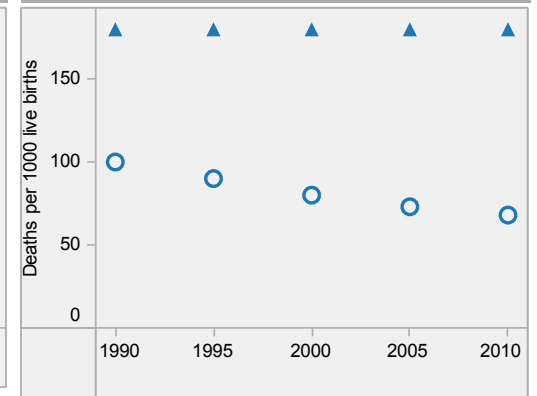
Distribution of years of life lost by causes (2008)



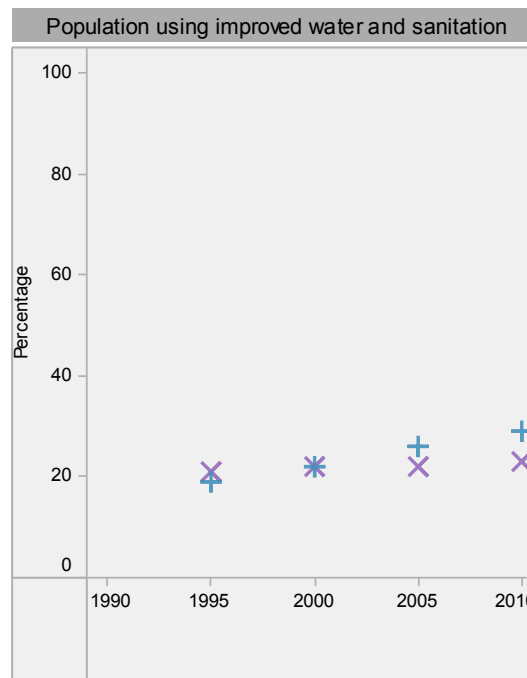
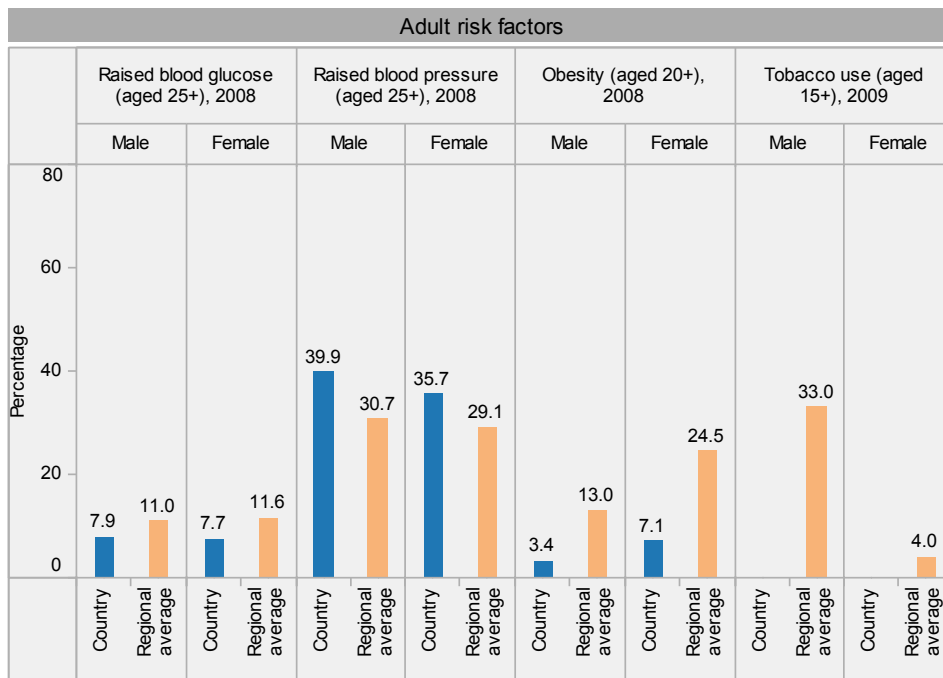
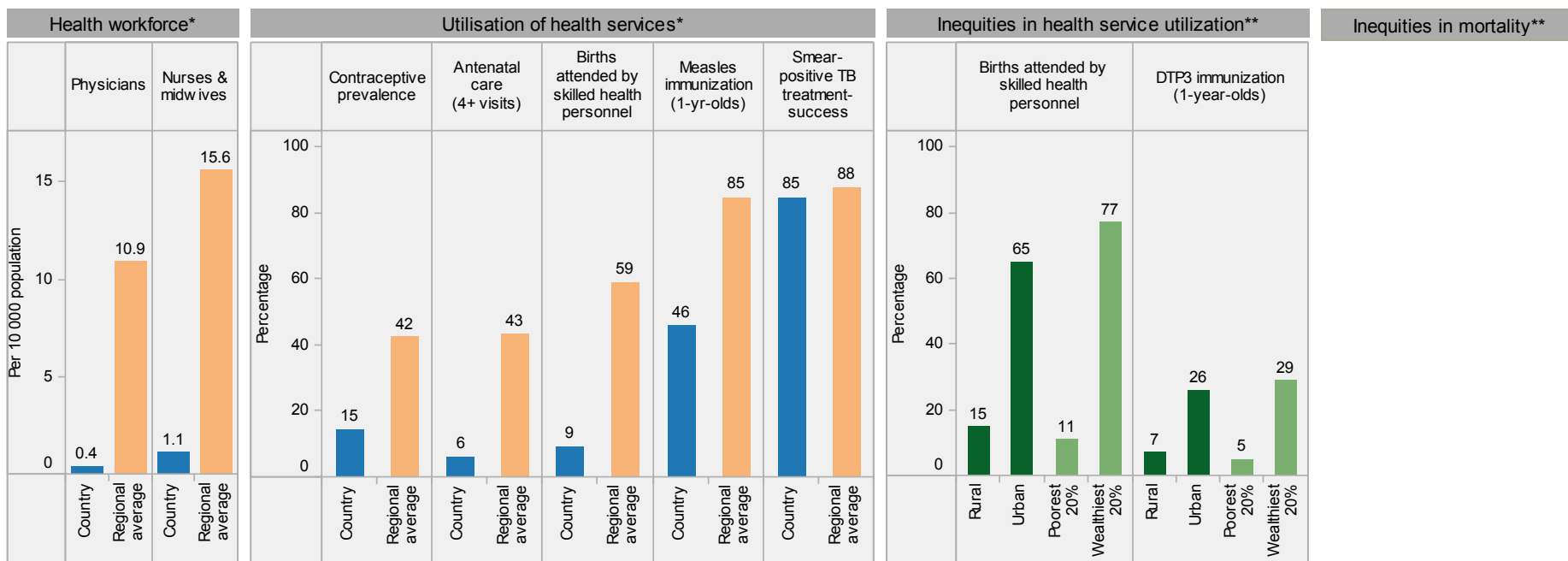
Distribution of causes of deaths in children under-5 (2010)



Under-5 mortality rate



# Somalia: health profile



Somalia is located in the WHO Eastern Mediterranean Region.

\* Data refer to latest year available from 2005. For specific years and references, visit the Global Health Observatory at [www.who.int/gho](http://www.who.int/gho).

\*\* For data source and year, see the World Health Statistics 2012.

### Population using improved water and sanitation

- + Improved drinking-water sources
- x Improved sanitation facilities

Last update: May 2012.