

Maternal mortality in 1990-2015

WHO, UNICEF, UNFPA, World Bank Group, and United Nations Population Division
Maternal Mortality Estimation Inter-Agency Group

FRANCE

Year	Maternal mortality ratio (MMR) ^a	Maternal deaths	AIDS-related indirect maternal deaths	Live births ^b	Proportion of maternal deaths among deaths of female reproductive age (PM %)
	Per 100 000 live births (lb)	Numbers	Numbers	Thousands	
1990	15 [13-16]	110	4	745	0.9
1995	15 [13-17]	110	3	729	0.8
2000	12 [11-13]	89	1	751	0.7
2005	10 [10-11]	80	1	779	0.7
2010	9 [8-10]	72	0	790	0.8
2015	8 [7-10]	66	0	782	0.7

^a MMR and PM are calculated for women 15-49 years.

^b Live birth data are from World Population Prospects: the 2015 Revision. New York, Population Division, Department of Economic and Social Affairs, United Nations Secretariat; 2015.

Annual Rate of Reduction	(%)
1990-2015	2.2 [1.2 - 3.4]
1990-2000	2 [0.6 - 3.6]
2000-2015	2.3 [0.8 - 4]
2005-2015	1.9 [-0.2 - 4.5]

Available data sources

Data from civil registration system:

	1985	1986	1987	1988	1989	1990	1991	1992	1993	1994	1995	1996	1997	1998	1999	2000
Maternal deaths ^c	92	85	72	72	65	79	89	96	66	83	70	97	70	75	55	50
Late maternal deaths ^d	–	–	–	–	–	–	–	–	–	–	–	–	–	–	–	2
Female deaths ^e	12333	12240	11966	12199	12326	12177	12585	12915	13264	13153	13631	13177	12407	12649	12671	12414
Adjustment factor ^f	1.5	1.5	1.5	1.5	1.5	1.5	1.5	1.5	1.5	1.5	1.5	1.5	1.5	1.5	1.4	1.4
Maternal deaths not included ^g	–	–	–	–	–	–	–	–	–	–	–	–	–	–	–	–

	2001	2002	2003	2004	2005	2006	2007	2008	2009	2010	2011	2012	2013	2014	2015
Maternal deaths ^c	–	–	–	–	–	–	–	–	–	68	44	–	–	–	–
Late maternal deaths ^d	–	–	–	–	–	–	–	–	–	0	2	–	–	–	–
Female deaths ^e	–	–	–	–	–	–	–	–	–	9781	9525	–	–	–	–
Adjustment factor ^f	–	–	–	–	–	–	–	–	–	1.1	1.1	–	–	–	–
Maternal deaths not included ^g	54	67	54	52	41	59	59	52	71	–	–	–	–	–	–

^c ICD10 codes O00-O99 Pregnancy, childbirth and the puerperium and A34 Obstetrical tetanus; ICD9 codes 630-676 Complications of pregnancy, childbirth and the puerperium.

^d ICD10 codes O96 and O97.

^e Female deaths data are from WHO VR database 2015.

^f For details on the adjustment factor please refer to: WHO, UNICEF, UNFPA, World Bank Group and the United Nations Population Division. Trends in maternal mortality: 1990 to 2015. Geneva: World Health Organization; 2015.

^g Did not meet inclusion criteria or confidential inquiry used instead.

Available data sources (continued)

Data from studies **included** in analysis:

Source	Definition	Study period	Maternal deaths	Female deaths, 15-49	PM(%)	MMR per 100 000 lb	Adjusted MMR per 100 000 lb
Confidential inquiry, France	Maternal	2001-2002	75				10
Confidential inquiry, France	Maternal	2002-2003	98				13
Confidential inquiry, France	Maternal	2003-2004	77				10
Confidential inquiry, France	Maternal	2004-2005	74				10
Confidential inquiry, France	Maternal	2005-2006	66				9
Confidential inquiry, France	Maternal	2006-2007	73				9
Confidential inquiry, France	Maternal	2007-2008	99				13
Confidential inquiry, France	Maternal	2008-2009	80				10
Confidential inquiry, France	Maternal	2009-2010	75				10

Data from studies **not included** in analysis:

Source	Definition	Study period	Maternal deaths	Female deaths, 15-49	PM(%)	MMR per 100 000 lb	Adjusted MMR per 100 000 lb
--------	------------	--------------	-----------------	----------------------	-------	--------------------	-----------------------------

Covariates used in the model

Year	GDP per capita, PPP (constant 2011 Int \$)	General Fertility Rate per 1000 women 15-49	Skilled attendance at birth (% of births)
1990	28988	53	100
1995	30422	50	99
2000	33718	52	99
2005	35726	54	99
2010	35995	56	99
2015	36688	56	99

GDP per capita measured in purchasing power parity (PPP) equivalent dollars, reported as constant 2011 international dollars, based on estimates published by World Bank Group.

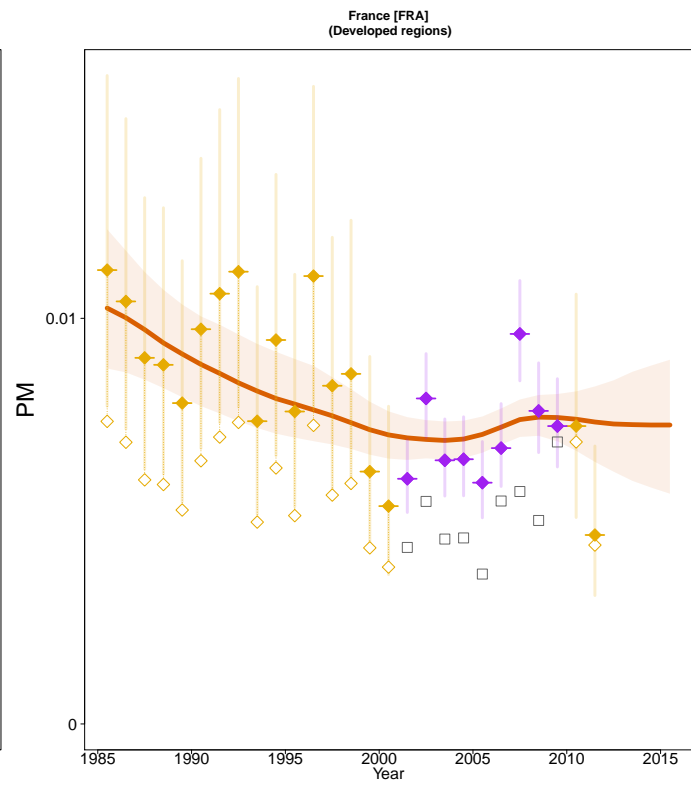
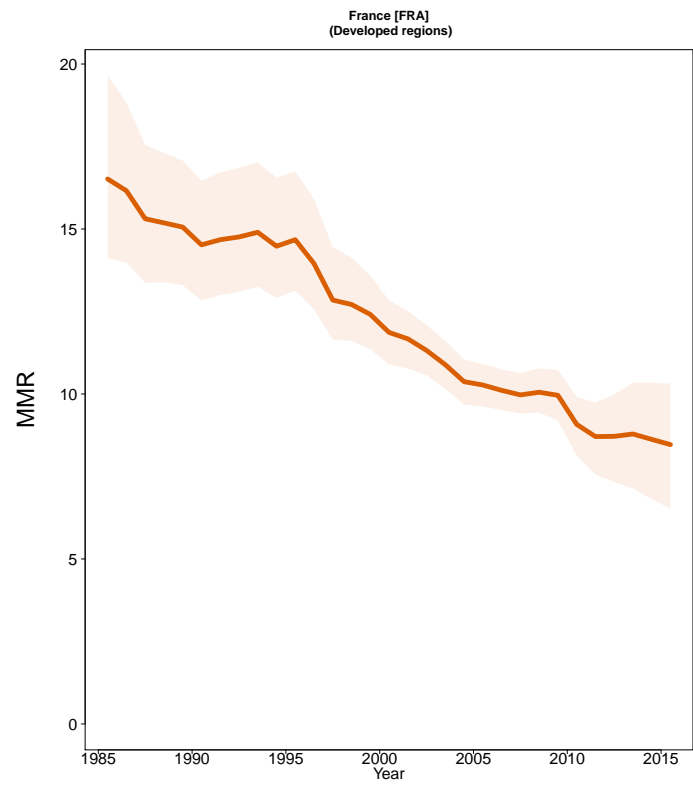
Source: World Bank Group, International Comparison Program database, 2014.

General fertility rate

Source: World Population Prospects: the 2015 Revision. New York, Population Division, Department of Economic and Social Affairs, United Nations Secretariat; 2015.

Percentage of births attended by skilled health personnel (doctors, nurses or midwives).

Source: UNICEF global databases 2015, based on MICS, DHS and other nationally representative sources. (<http://data.unicef.org/>).



- Estimates –
- MMEIG 2015
- MMR Database 2015 –
- ◇ Observed Data
- ◆ Adjusted Data
- Data type –
- ◆ VR
- ◆ Spec. studies
- Excluded VR data
(overlap with specialized study)