

Old Nablus Road – Sheikh Jarrah
POBox 54812 – Jerusalem 91547
Tel: +972 2 540 0595
Fax: + 972 2 581 0193
Email: infounit@who-health.org



شارع نابلس القديم – الشيخ جراح
91547 ص ب 54812 – القدس
تلفون: +972 2 540 0595
فاكس: +972 2 581 0193
:
infounit@who-health.org

12th ISSUE: HEALTH SECTOR SURVEILLANCE INDICATORS Monitoring health and health sector in the oPt: March 15th, 2007

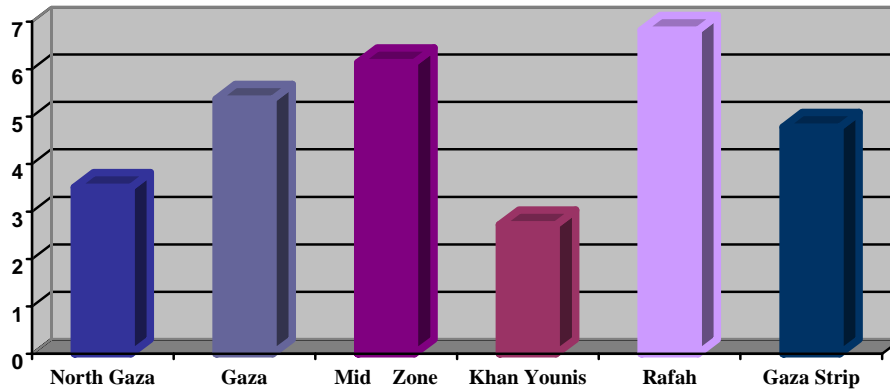
SET N. 1: “THE GENERAL HEALTH INDICATORS” (TABLE 1).

1. Incidence of Klebsiella

In Gaza Strip, one case of Keibsiella reported. The case was hospitalized in Shifa hospital for an unrelated complaint and then referred to a hospital in Israel for treatment, where the infection occurred. The case was isolated in the intensive care unit in Shifa hospital after being released from the Israeli hospital.

2. Underweight in Gaza Strip among children 9-12 months attend MoH PHC. Data collected during the period June 2006- January 2007 indicates that Rafah district followed by the Mid Zone district and Gaza respectively have the highest prevalence of underweight as compared to Gaza Strip, where the level is low; 4.78%. (Fig 1)

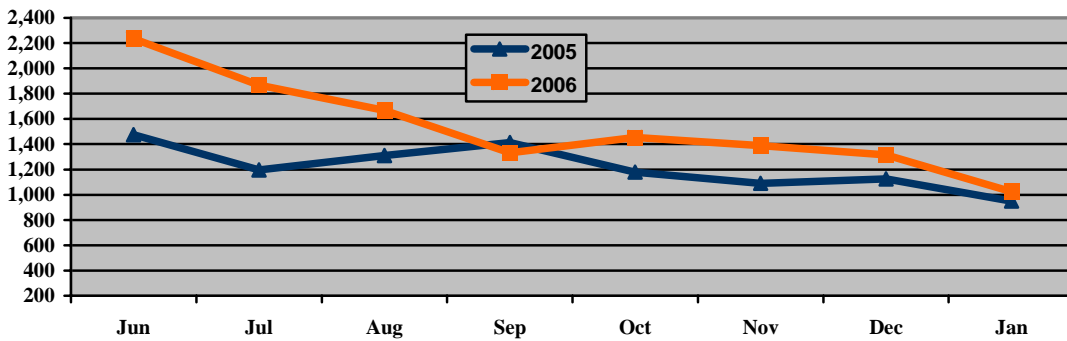
Figure 1: Prevalence of Underweight among children 9-12 months in Gaza Strip per district during the period June 2006- January 2007



3. Incidence of Watery Diarrhea

In the Gaza Strip, the number of consultations for diarrhea among children 0-3 years remains within the normal seasonal variation during the period September 2006- January 2007. (Fig 2)

Figure 2: N of consultations for Diarrhea in children in Gaza Strip during Jun-Dec 2005/2006 and Jan 2006/2007



4. MoH PHC consultations

In the MoH PHC centers in Gaza Strip, the number of consultations was slightly lower than expected (2005) during the period of July-December. **However, the number of consultations in January 2007 was significantly higher than it corresponding month by around 28.0%.** (Fig 3 and 4)

Figure 3 MoH, PHC consultations in Gaza Strip during Jun-December 2005/ 2006 and Jan 2006/2007:

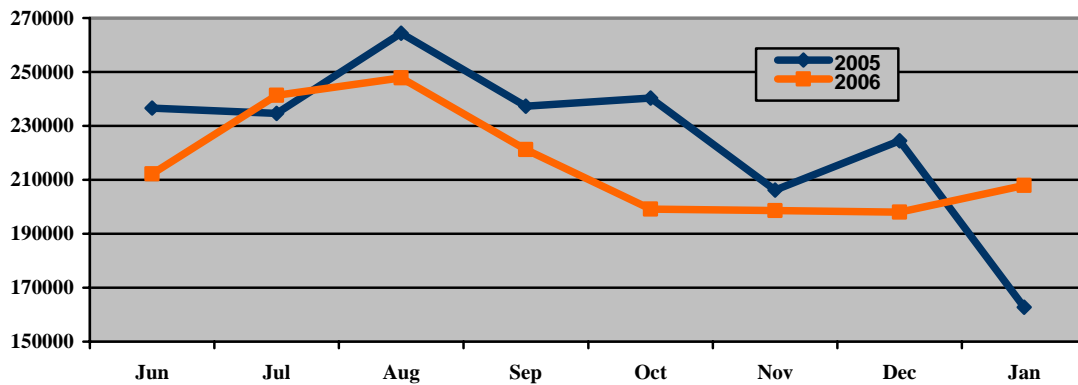
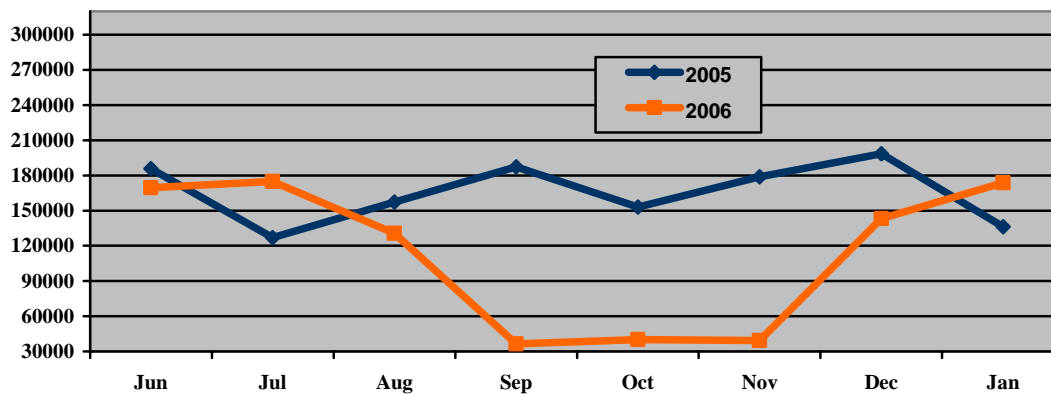


Figure 4: MoH, PHC consultations in the West Bank during Jun-December 2005/2006 and Jan 2006/2007



5. UNRWA PHC Consultations

On UNRWA health services, data on PHC consultations in Gaza Strip indicates the **highest increase** in January 2007 compared to its corresponding month in January 2006 (an increase of around 53.0%). In the West Bank, although the number of consultations declined as compared to the previous month, its significantly higher than its corresponding month by around 45.0% which indicates a significant increase in the attendance to UNRWA health services as compared to the previous year, with health centers recording a gradual increase each month in the number of consultations provided (Figure 5 and 6).

Figure 5: UNRWA, PHC consultations in Gaza Strip during Jun-Dec 2005/2006 and Jan 2006/2007

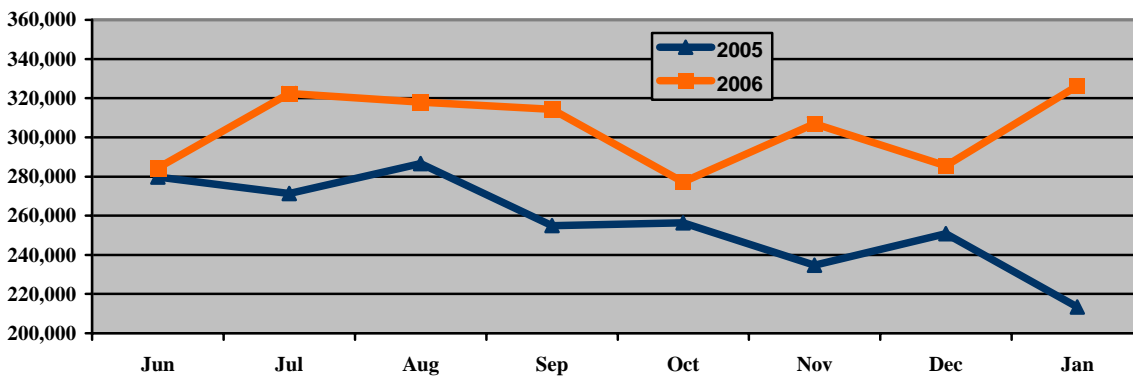
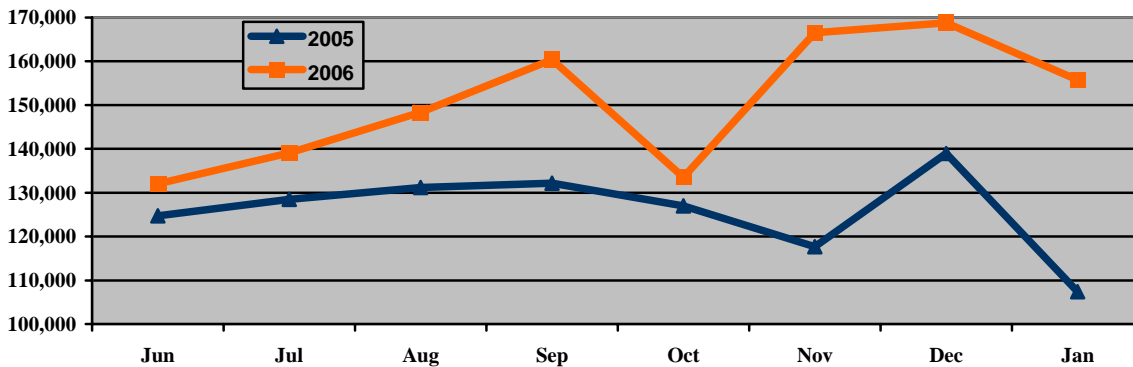


Figure 6: UNRWA, PHC consultations in the West Bank during Jun-Dec 2005/2006 and Jan 2006/2007



6. MoH Hospital Admission

Hospital admissions went back to normal in the West Bank in January 2007 after a sharp decline during the period of the strike (September – November 2006). In Gaza strip, hospital admissions varies within the normal fluctuation, however, an increase of around 10% in admissions in January as compared to the previous month could be attributed to internal violence that took place during the last week of January and first week of February. (Fig 7 and 8)

Figure 7: Total MoH, Hospitals' Admissions in the West Bank during Jun-December 2005/ 2006 and Jan 2006/2007

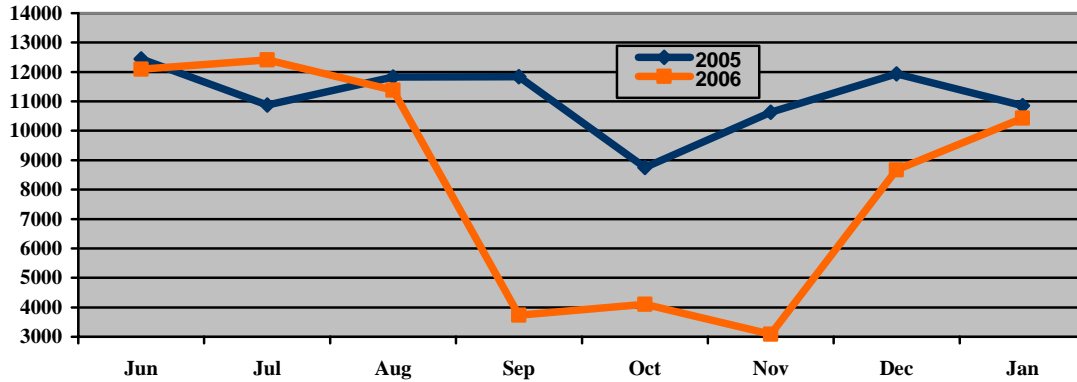
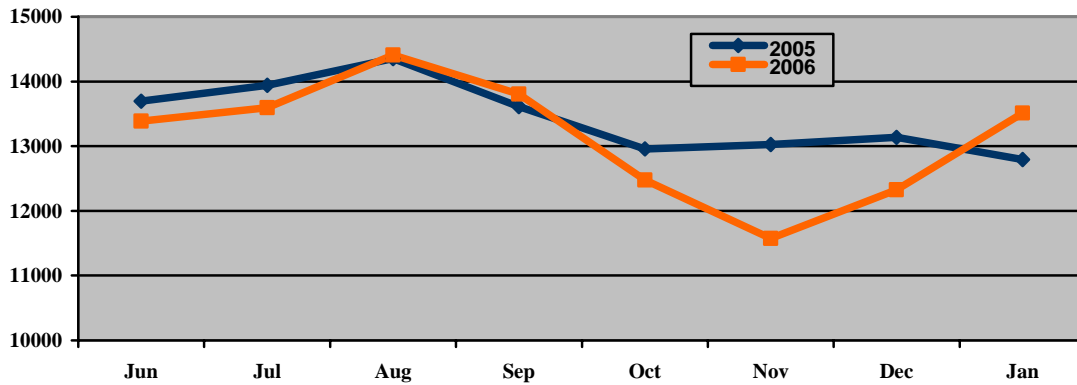


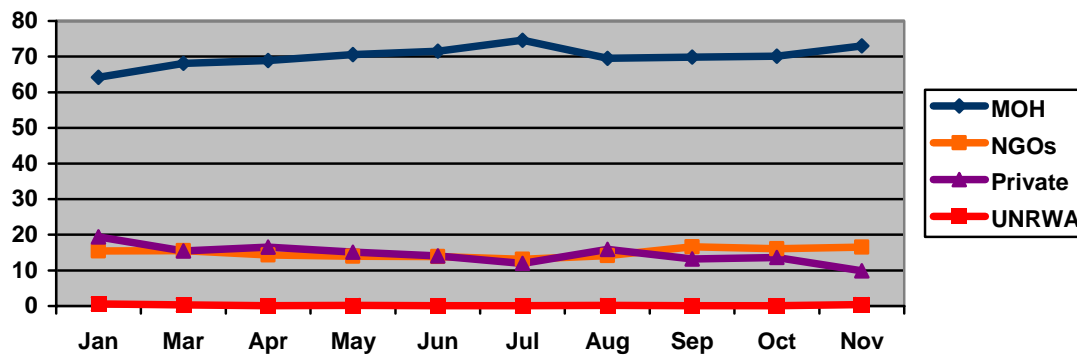
Figure 8: Total MoH, Hospitals' Admissions in Gaza Strip during Jun-December 2005/ 2006 and Jan 2006/2007



7. Place of Delivery per Health Provider

A 10% increase in deliveries at MoH hospitals and a decrease at NGOs and private facilities was confirmed in Gaza, in November 2006 after a decrease during the period August – October 2006. a higher number of deliveries (7) occurred in UNRWA facilities in November compared to the previous months, where the average number is 2 cases, given the fact that the maternity units in UNRWA facilities has been closed since January 2006. (Fig 9)

Figure 9: Proportion of delivery per health provider in Gaza Strip during Jan-Nov 2006



SENTINEL INDICATORS (West Bank)

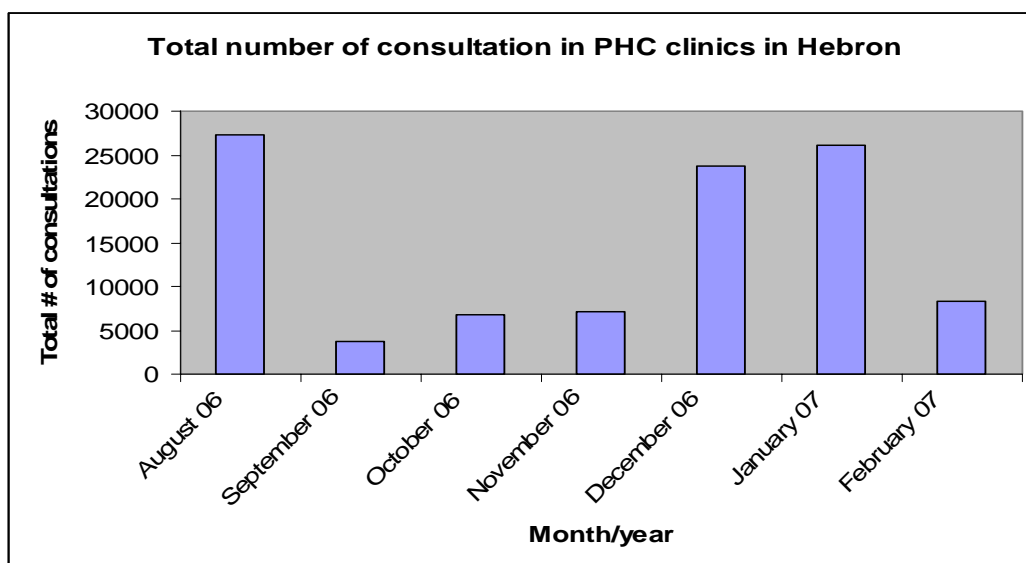
Reference period: Feb 1-Feb 28th and the first week of March07

The strike in the Health sector in the West Bank is now in its 4th week (since February 17th 2007) and has escalated twice since then (on Feb 26th and March 3rd). The escalation of the strike during the current period has taken place within a shorter interval (3 weeks) in comparison with the former strike (August – Dec 06) when the escalation took place over a 3 month period. Currently, the level of the strike is approaching the same levels as in December 06. (Please see table 1 for more information)

Table 1:

Service provision in the West Bank during the strike Reference period:(Feb 17 till March 15)			
PHC services:	Feb 17-Feb 26	Feb 26- March 3	After March 3rd
Immunization	As planned before strike	One day per week	One day every two weeks
Chronic diseases			
Drugs distribution	As planned before strike	One day / week	One day every two weeks
Follow up	As planned before strike	Limited follow up	Limited follow up
Working hours	From 8:00-11:00	From 8:00-12:00 noon	From 8:00-11:00 am
Only services that are announced by the syndicates during the specific period of time is provided from 8-11 or 12			
Hospitals	Feb 17-Feb 26	Feb 26- March 3	After March 3rd
Emergency	All cases examined and admitted if needed	Critical cases only	Critical cases only
Deleveries	All cases	Critical cases	Critical cases
Outpatient clinics	Open	Closed	Closed
Surgeries	All surgeries	Elective surgeries stopped Only emergency services	Elective surgeries stopped Only emergency services
ICU, Dialysis, Thallasemia, and oncology	Ongoing	Ongoing	Ongoing

Service provision was dramatically reduced in all surveyed hospitals and PHC in the West Bank during the month of February. Currently the hospitals are providing emergency services only to critical cases. Only, emergency deliveries and surgeries take place. Elective surgeries and outpatient clinics have been stopped. ICU, dialysis, thallasemia and oncology services are still ongoing. PHC are providing immunization services and drugs to chronic patients once every two weeks. Limited follow up is provided to chronic patients. The following graph shows the drop in the number of PHC consultations in Hebron as the result of the previous strike (August 06- Dec 06) and the current strike (after Feb 17th).



Staff attendance was normal during the strike but is limited to three hours/day (8:00-11:00am). During these hours only services that are announced by the syndicates are provided. Staff attendance during this strike is more regulated than during the former strike (August- Dec 06). Beit Jala Public Hospital reported that during the last strike staff used to be absent for 3-4 consecutive days while during this strike staff attends on a daily basis for three hours only.

The number of staff operating in hospital units has been reduced during the strike. Hebron public hospital reported that in the pediatric department there are normally 9 nurses working in the morning, 3 in the evening and 2 at night. During the strike there were 2 nurses and 2 residents operating in the same unit on shifts basis.

Hospital directors perceive that services have been going on in a smoother pattern than during the last strike. Definition as to what constitutes an emergency case is clearer than during the past strike as well. Beit Jala hospital reported that the ER doctor examines each patient in the ER. Usually emergency cases include patients suffering from bone fractures and dialysis as well as heart attack and stroke problems.

In addition to the strike, health service provision in the city of Nablus was affected by the incursion of the IDF in the city. During the incursion, checkpoints were placed in front of the main three hospitals (Rafidia Surgical Hospital, Al Watani Hospital and Al- Itihad Hospital). Patients accessing the health services had to undergo heavy security checks before entering the hospitals. Al Watani hospital, an important referral hospital that provides dialysis and oncology services, noted that the hospital on average provides services for 23 patients a day, only 13 oncology patients were provided with services during the incursion due to difficulties in entering Nablus city from the surrounding villages. Due to the difficult situation, especially in the old city of Nablus, only a few number of patients accessed primary health care services in the city.

Shortage of stock was reported to be a major problem in some of the hospitals and PHC in the West Bank. Al Watani Hospital reported that during the month of February only 11 out of 39 hematology patients were able to get drugs due to the shortage in stock. Rafidia Surgical hospital reported that 6 items are out of stock. PHC in Bethlehem, Hebron and Salfit reported that there are 112, 70 and 132 items respectively that are out of stock.

SENTINEL INDICATORS- Gaza Strip- Reference period: February 2007

Service provision was normal except for

Reduction of:

- **Diagnostic** services in Dair El Balah, Juhr El-Deek, Rafah, Jabalia and Rimal PHC clinics and in all the MoH hospitals.
- **Antenatal Care** services in Tal Sultan PHC clinic;
- **Surgical Operation** service and **Kidney Dialyses** services in Aqsa Martyrs hospital;
- Catheterization service in Gaza European hospital and
- **Cleaning** service in all MoH hospitals.

Suspension of:

Elective surgical operations in Shifa hospital, as a result of high number of casualties received during the period of the internal violence.

All surgeries in Yousif Najjar hospital since the opening of the new building on the 18th of February, where the operation rooms have been transferred but not functioning yet.

A new department has been established in Nasser hospital that will provide diagnostic services, but not functioning yet because of the **shortage in health personnel** and the unavailability of air conditioning system in the department.

A higher than expected influx of children with **Bronchiolitis** was reported in Kamal Edwan, Paediatrics, Aqsa Martyres, Nasser and Yousif Najjar hospitals. Many of the children had to be placed on mattresses on the floor as a result of a shortage in number of beds.

The MoH has conducted a workshop on **Klebsilla Bacteria** to the health district officers and hospitals' directors. Clear guidelines on the response to the infection were distributed by WHO to their partners in the MoH..

Staff attendance in all the MoH facilities was normal during the reference period. No absentees were reported during the reference period. Shifa staff only is still using the MoH buses for transportation. The working hours in all the MoH PHC facilities and hospitals were regular. The interviewed health personnel show no intention to go on strike.

Lack of vegetables and fruit for the patients was reported for two weeks in all the MoH hospitals, as a result of the financial crisis that the MoH is going through.

Interruption of electricity was reported at a different extent; 3-4 hrs/week in the Mid Zone, 3-4hrs/day in Gaza and 1-2hrs/day in Khan younis. Sporadic interruption was reported in Rafah and North Gaza districts. Continuous refilling of fuel is taking place, except for Nusairat clinics in the Mid Zone, where the availability of fuel zero for the second month.

Water interruption was reported in Dair El-Balah PHC facility and water filters are not functioning in Paediatric, Aqsa Martyrs and Nasser hospitals.

Partial stock of drugs was distributed on time to all the MoH PHC facilities and hospitals. However, the number of out of stock drugs in the MoH hospitals is higher than the previous month. **A full stock of medical supplies** is available at the MoH hospitals, were many donations were received.

Shortage in stationary was reported in all the MoH PHC facilities and hospitals.

Table 1. Status of Selected General Health Indicators in the oPt

Indicators	Baseline Dec05/Jan 06	Jun. 2006	Jul. 2006	Aug. 2006	Sept. 2006	Oct. 2006	Nov. 2006	Dec. 2006	Jan 2007
Underweight West Bank Gaza Strip	3.4% NA	4.2% 4.47%	NA 5.15%	NA 5.64%	NA 4.77%	NA 5.47%	NA 5.00%	NA NA	NA 2.9%
Low Birth Weight	6.1%	4.2%* (419/10,060)			6.7%* (749/11,140)				
Anaemia among Children West Bank Gaza Strip	43.9% 52.0%	49.4% 68.9%	49.9% 67.9%	50.6% 70.5%	45.3% 73.0%	48.1% 70.6	48.1% 66.70%	44.6% 66.73%	50.5% 67.8%
Anaemia among Pregnant Women West Bank Gaza Strip oPt	23.0% 42.6% 29.4%	27.0% 42.9%	29.7% 39.8%	30.6% 46.1%	37.6% 36.3%	35.1% 33.1%	32.8% 30.1%**	26.2% 27.2%	NA 29.7%
Diarrhea in children at UNRWA clinics (Corresponding month of 2005) West Bank Gaza Strip	534 (NA) 949 (868)	1,246 (993) 2,235 (1475)	887 (894) 1,868 (1196)	1,119 (1284) 1,667 (1310)	809 (968) 1,332 (1414)	861 (916) 1,454 (1178)	966 (1059) 1,389 (1091)	867 (774) 1,314 (1,126)	786 (534) 1,025 (949)
Place of delivery by service provider West Bank MoH NGOs Private Gaza Strip MoH NGOs Private UNRWA	52.6% 27.2% 15.3%	52.62% 29.13% 15.52%	52.1% 28.8% 15.5%	NA	NA	NA			
	64.2% 15.5% 19.4% 0.6%	71.51% 13.94% 14.11% 0.12%	73.9% 13.2% 12.6% 0.1%	69.5% 14.2% 15.9% 0.15%	69.88% 13.874% 15.87% 0.14%	70.1% 16.1% 13.6% 0.1%	73.0% 16.5% 9.9% 0.4%		
Non-institutional delivery West Bank (N/ total birth) Gaza (N/total birth)	228/ 4624 (4.9%) 13 / 4317 (0.3%)	102/3738 (2.73%) 11/3387 (0.32%)	95/2657 (3.6%) 8/3969 (0.2%)	NA 10/4040 (0.25%)	NA 9/ 4210 (0.24%)	NA 4/2902 (0.09%)	NA 4/1613 (0.25%)		

Hospital Services In-pt admissions(MoH)										
West Bank	10,851	12,092	12,415	11,381	3,727	4,103	3,087	8,666	10,432	
Gaza	12,796	13,386	13,592	14,409	13,806	12,475	11,573	12,328	13,512	
oPt	23,647	25,478	26,007	25,790	17,533	16,578	14,660	20994	23,944	
PHC consultations MoH										
West Bank	136,333	169,464	174,891	130,782	36,441	39,979	39,294	143,242	173,742	
Gaza	162,691	212,181	241,321	247,785	221,157	199,119	198,606	198,023	207,953	
oPt	299,024	381,645	416,212	378,567	257,598	239,098	237,900	341,265	381,695	
UNRWA										
West Bank	107,415	132,060	139,061	148,319	160,351	133,568	166,495	168,816	155,727	
Gaza	213,303	284,446	322,397	317,911	314,370	277,173	307,015	285,569	326,234	
oPt	320,718	416,505	461,458	466,230	474,721	410,741	473,510	454,385	481,961	
# of Hb tests performed										
West Bank	4,144	5,434	6,154	4,133	527	375	477	3,542	7,508	
Gaza	4,609	5,983	4,583	5,038	4,141	3,797	5,420	4,357	4,508	
oPt	8,753	11,417	10,737	9,171	4,668	4,172	5,897	7,899	12,016	
Contracting out (including referral abroad)										
West Bank	1,644	1,058	1,230	958	476	631	1,227	1,359	NA	
Gaza	999	506	323	520	462	482	634	514	593	
oPt	2,644	1,564	1,553	1,478	938	1,113	1,861	1,873		
Salary payment status (MoH staff)	Received	Part. Received	Part. Received	Part. Received	Received***	Received***	Received ***	Received***	Received***	
Transport (Costs of fuel, in NIS)										
West Bank	93,483	128,780	106,991	NA	NA	NA	NA	NA		
Gaza	102,013	141,509	147,000	171,916	138,765	141,842	140,787	137,630		
oPt	299,257	270,289	253,991							

* Low Birth Weight for live births in Gaza Strip

** Data does not include Gaza district

*** A flat rate of 1,500 NIS was received within the TIM and another payment was received from the government to make it full.

Table 2: Summary of findings on Sentinel Hospital indicators- West Bank- Feb 1st –Feb 28th, 2007 and the first week of March 2007¹

District/ Hospital name	Service provision ²	Staff attendance ³	Drug items NOT available	Equipment Not functioning	Chemotherapy/Dialysis/ Any other comments
Jenin/ Dr. Khalil Sulieman	Reduced	reduced	Received partial stock	Oxygen extractor Fetal heart monitor (all 4 monitors not functioning) Same as last month	NA
Tulkarem / Dr. Thabet Thabet	Reduced	Reduced	Received partial stock	Photospectrometer.	# of patients receiving chemotherapy service: 78 # of patients receiving dialysis services: 34 # of outpatient visits until (17/2): 994 # of inpatient admissions: 998 # of emergency visits: 2792 Total # of deliveries: 153 Total # of surgeries: 326
Qalqilya / Dr. Darwish Nazal emergency	reduced	reduced	Partial Stock	All functioning	Statistical report is not available <i>Estimated</i> average number of ER visits/day =50 During the strike the <i>estimated average</i> number of ER visits/day =10
Nablus/ Al Watani Hospital	reduced	reduced	partial stock	Stress Test machine Treadmill	# of inpatient admissions: 939 # of outpatients: 978 # of emergency visits: 2760 During the month only 11 out of 39 hematology patients were able to receive their drugs due to shortage in drugs.
Rafidia Surgical Hospital/ Nablus	reduced	reduced	partial stock 6 items are at zero stock	NA	# of inpatient admissions: 1049 # of outpatients: 1093 # of emergency visits: 2126 total # of surgeries: 550

¹ WHO monitored service provision in the hospitals during the first week of March. The statistics and drug items relate only to the month of February.

² During the strike only emergency deliveries and critical cases were admitted in the hospital. Elective surgeries stopped and only those referred by the emergency room were done. Outpatient clinics stopped providing health care services. ICU, Dialysis, Thalassemia, and oncology services will be provided as usual. This information applies to all hospitals in the West Bank which have been going on strike since the 17th of February. Before the 17th of February, all services were normal.

³ During the strike, staff was working on shifts basis. The number of staff working in different departments is lower than the number of staff usually operating in these units. During their working hours only the services announced by the syndicates are provided. This applies to all the hospitals in the West Bank.

					total number of deliveries: 328
Salfit/ Salfit Emergency	reduced	reduced	Partial Stock	All functioning	# of outpatient visits: 275 # of emergency visits: 823 # of deliveries: 83 # of surgeries: 40 # of admissions including deliveries: 156
Ramallah/ Ramallah	reduced	reduced	Received partial stock	Image Intensifier c-arm Oxygen extractor	NA: Statistical report not ready
Jericho/ Jericho	reduced	reduced	Partial stock	oxygen extractor	NA
Beit Jala Public Hospital/ Beit Jala	reduced	reduced	Partial stock	1- One out of five bed- side monitors is not functioning. 2- Portable X- Ray	Number of dialysis sessions : 310 - Number of outpatient visits: 1310 - Emergency visits: 1567 - Number of inpatient admissions: 642 - Number of surgeries: NA - Number of deliveries: NA - Number of oncology patients: 134 - Number of hematology patients: 103 - Total number of deliveries: 54
Hebron Public Hospital/ Hebron	reduced	reduced	Full stock	Kitchen Freezer	# of emergency visits: 4467 # of outpatient visits: 2065 # of inpatient admissions: 2011 Daycare services: # of dialysis sessions: 115 # of minor surgeries: 195 # of major surgeries: 322 # of normal deliveries: 473 # of cesarean deliveries: 79
Yatta/ Abu Al Hasan Al Qasem	reduced	reduced	Received partial stock	All functioning	Emergency visits : 1353 Deliveries: 228cases # of inpatient admissions including deliveries: 388 On average the ER provides services to 150-200 patients in a normal day. During the strike the number on average dropped to 40-50 patients. (These numbers are according to the director's estimations)

Table 3: Summary of findings on Sentinel District Indicators- West Bank, 1-28th of Feb07 and first week of March 2007⁴

District	Service provision ⁵	Working hours of PHC clinics ⁶	Staff attendance	Supply of 2- months and current stock level	Others
Bethlehem (16 clinics)	reduced	reduced	Normal	Received partial stock. 112 items are missing.	Intra district communication is partially functional.
Hebron (112 clinics)	reduced	reduced	Normal	Received-partial stock 70 items are missing	No problem in fuel coverage was reported - During the strike Insulin is provided to all diabetic patients on a daily basis from 8-11 am. Total number of consultations in: August 06: 27,218 September 06: 3,644 October 06: 6,782 November 06: 7,054 December 06: 23,665 January 07: 26,020 February 07: 8,387
Tulkarem (27 clinics)	Reduced	Reduced	Normal	Partial	Shortage in stationary.
Nablus (39 clinics)	reduced	reduced	Normal	Received partial stock on 3/3/2007. Medications needed by diabetic patients are out of stock.	- Mental Health services are ongoing - No problem in fuel coverage since vehicles are not being used due to the strike of the drivers.
Jenin (45 clinics)	Reduced	Reduced	Normal	Received-partial stock	Vehicles are out of order. One is only functioning.

⁴ WHO monitored service provision only during the first week of March.

⁵ During the period preceding the strike (Feb 1-17), services were provided on a normal basis. Feb 26th marked an escalation and immunization services was limited to one day a week. During the same period of time drugs were provided to chronic patients one day per week and only limited follow up took place. On March 3rd, the strike escalated for the second time. Since that date up till now, immunization is restricted to one day every two weeks as is the distribution of drugs for chronic patients.

⁶ Before the strike, working hours were regular. During the strike, staff attends for 3 hours only (8-11 am). During this period staff provide only the services that were announced by the syndicates.

Qalqilya (18 clinics)	NA	NA	NA	NA	NA
Jerusalem (16 clinics)	NA	NA	NA	NA	NA
Jericho (12 clinics)	Reduced	Reduced	Normal	Received-partial stock	-Mental health services are ongoing as before the strike -Diabetic patients are provided with Insulin every day as needed.
Salfit (16 clinics)	Reduced	Reduced	Normal	Partial Stock 132 items of which 50% is PHC medications are missing	Immunization in the village of Marda was provided by the Union of Health Work Committees
Ramallah (52 clinics)	Reduced	Reduced	Reduced	partial stock	No shortage in fuel was reported since no immunization visits are being done in the villages.

Table 4: Summary of findings on Sentinel Hospital indicators in Gaza Strip, Feb 1st –Feb 28th, 2007

	Service provision	Staff Attendance ⁵	Drug items NOT available ⁶	Equipment Not functioning	Chemotherapy/Dialysis/ Any other comments. ^{23,24}
Kamal Edwan Hospital, North Gaza District	Reduced: diagnostic services. ^{1,2,3,4}	Normal.	6 drug items at zero availability. Received partial stock of drugs and full stock of medical supplies on 11 February 07.	Diagnostics: 2/3 spectrophotometer. 2/6 ECG, 1/1 Autoclave and 13/20 blood pressure machines.	Electricity- sporadic interruption of electricity. No reported problems with the available generators. On time fuel refilling was reported. Water Supply- no reported problems ⁸ . Outpatient visits: decreased from 1,955 in Dec to 1,764 in Jan. Emergency visits: decreased from 5,214 in Dec to 4,943 in Jan. Admissions from emergency: decreased from 502 in Dec. to 689 in Jan. ⁷
Beit Hanun Hospital, North Gaza District	NA	NA	NA	NA	NA

Nasser Hospital, Khan Younis District	Reduced: diagnostic services. ^{4,9}	Normal	25 drugs items and 3 medical supply items at zero availability. 10 drug items 7 medical supply items at less than 2 weeks stock. (Received partial stock of drugs and medical supplies on 7 February 07)	Life supporting: Ventilators (2/5), Laprascope Scopy, Echo Doppler, anesthesia machines, ECG, 2/11 dialyses machimes infusion pumps. <i>Diagnostic:</i> 1/1 PT, 1/2Nova 10 Electrolyte, 1/1 Allison chemistry analyzer, 1/1 C-BA Auto-analyzer, 1/2Blood Component Centrifuge and Glocumetre Defibrillators are needed urgently. <i>Others:</i> Water filters (4/4).	Dialysis: 23 out of 60 patients are not receiving the required sessions. ¹⁰ Electricity- sporadic interruption of electricity. No reported problems with the available generators. On time fuel refilling was reported. Water supply: no available purification unit for the water well. Outpatient visits: slightly decreased from 5,653 in Dec to 5,621 in Jan Emergency visits: decreased from 5,585 in Dec to 5,150 in Jan. Admissions from emergency: increased from 640 in Dec to 824 in Jan. ¹¹
Gaza European Hospital Khan Younis District	Normal. ^{12,13,14}	Normal	32 drug items at zero availability. 6 drug items at less than 2 weeks stock. (Received partial stock of drugs and full stock of medical supplies stock on 4 th of February 2007)	Echo Doppler and Milk pasteurization. 1/4 laundry machines and Sheller compressor for the air conditioning system is urgently needed.	Chemotherapy: 8 patients are not receiving the required medications. ¹⁵ Electricity- No reported problems Water supply: No reported problems. Outpatient visits: decreased from 5,653 in Dec. to 5,335 in Jan. Emergency visits: increased from 3,222 in Dec. to 3,662 in Jan. Admissions from emergency: increased from 655 in Dec. to 770 in Jan.
Yousif El Najar Hospital, Rafah District	Reduced: Pediatrics and diagnostic services. ^{2,4,16} Suspended: Surgical operation service. ¹⁷	Normal	13 drug items and 2 medical supply items are at zero availability. 19 drug items and 5 medical supply items at less than 2 weeks. (Received partial stock of drugs and medical supplies on 24 February 2007)	Diagnostic: (1/2)Cell Blood Count(CBC) machine	Dialysis: 41 patients received required sessions. Electricity: sporadic interruption of electricity. The available two and the new third generators covered the hospital properly with continues refilling of fuel from the EU. Water Supply: no reported problems. Outpatient visits: decreased from 1,935 in Dec. to 1,673 in Jan.

					Emergency visits: decreased from 5,532 in Dec. to 5,019 in Jan Admissions from emergency: slightly decreased 319 in Dec. to 312 in Jan.
Aqsa Martyrs Hospital, Mid Zone District	Reduced: Diagnostic services. ^{4,18}	Normal	17 drug items and 17 medical supply items at zero availability. 5 drug items and 14 medical supply items at less than 2 weeks stock. (Received partial stock of drugs and partial stock of medical supplies on 06 February 07)	Monitors (2/12); Ventilators (1/5); Transport ventilator (1/2); 4 infusion pumps, 2 monitors, 2 Anesthesia M/C, C.R. Image, Resuscitator and Dialysis machines (3/9).	Chemotherapy: 11 patients received recommended medications. Dialysis: 45 patients received recommended sessions with difficulties. ¹⁹ Electricity- interruption of electricity for 3-4 hrs/ week. Continues refilling of fuel is taking place. ²⁰ Water supply- no reported problems. Outpatient visits: decreased from 1,624 in Dec. to 1,412 in Jan. Emergency visits: increased from 6,423 in Dec. to 6,778 in Jan Admissions from emergency: increased from 154 in Dec. to 205 in Jan
Pediatric Hospital, Gaza District	Reduced: diagnostic services ^{1,2,4}	Normal	26 drug items are at 0 availability. 13 drug items at less than 2 weeks stock. (Received partial stock of drugs and full stock of medical supplies on 6 February 07)	Diagnostic: ECG machine (6/7), Basic X-ray machine (1/2), ventilator (1/4), monitors (2/6), Biosystem BTS 310 (1/1), 320 photometer (1/1), centrifuge (1/3), Autoanalyzer Alcyon 300 (1/1), Autoanalyzer Clin-Line 150 (1/1), Blood Gas Analyzer (1/2), centrifuge (1/3), Incubator (1/2), Cell Blood Count CBC Ssystemex K-1000 (1/1), Bilirubin Stat Analyzer (1/1), STAGO Coagulometer (1/1), ultrasound(1/2) and Flame photometre. Others: Water filters	Chemotherapy: 40 patients. Received required Dialysis: 2 patient on peritoneal dialysis received required medications. Electricity: - interruption of electricity for 3-4 hrs/day. No reported problems with the available generators with continuous fuel refilling. Water supply- no reported problems. Outpatient visits: increased from 1,362 in Dec. to 1,383 in Jan Emergency visits: decreased from 5,724 in Dec. to 5,438 in Jan. Admissions from emergency: increased from 662 in Dec. to 872 in Jan.
Shifa Hospital, Gaza District	Reduced: diagnostic services. ^{1,2}	Normal	17 drug items are at 0 availability.	<i>Diagnostic:</i> CT, x-ray (2/5) portable x-ray, Echo portable, centrifuge.	Chemotherapy: 118 patients received required medications. Around 20 patients received partial treatment.

	Reduced: surgical operations. ²¹		3 drug items at less than 2 weeks stock. (Received partial stock of drugs and full stock of medical supplies on several shipments during February 07)	Arterial blood gas analyser, <i>Life supporting:</i> dialysis machine (6/28). Others; elevators are out of order and water filters are needed.	Dialysis: 180 patients received recommended sessions. Electricity- interruption of electricity for 3-4 hrs/day. The available Generators covered the hospital properly with continues fuel refilling. Water supply- interruption of water for 6 hrs in one day. Outpatient visits: decreased from 19,243 in Dec. to 16,797 in Jan Admissions from emergency: Increased from 1,045 in Dec. to 1,233 in Jan. ²²
--	---	--	--	--	--

¹. The still existing problem is the lab equipments that are either broken down and the required spare parts are not available or very old and not able to function properly.

² lack of hormone tests- reagents in all the MoH hospitals. Shortage in other reagent is an existing problem in the Hospitals

³. New lab equipment has been received from different donors.

⁴. A higher than expected influx of children with **Bronchiolitis** was reported. Many of the children had to be placed on mattresses on the floor as a result of a shortage in number of beds.

⁵. Staff attendance is normal in all the assessed hospitals. The interviewed staff has no intention to go on strike

⁶. Many items of medical supplies have been received by all the hospitals from different donors.

⁷. New building started to function in the hospital, which includes radiology, pediatrics and emergency departments and Intensive Care Unit,.

⁸. Water filters were received from some donors.

⁹. Reagents for Blood Gas, electrolyte, CRP, ASOT, triglyceride, and Hormone reagents and decalcification disinfectant solution are urgently needed

¹⁰. The available dialyses machines are not enough for all the patients..

¹¹. New building has been established, but not functioning yet because of the shortage in staff and the air conditioning machine needs coordination to enter from Karni cargo crossing.

¹². The Inter-Vetro Fertilization (IVF) services have been stopped to be provided by the hospital, a privatization of this service is under process.

¹³. Heart catheterization service was reduced because of some shortage in consumables needed for this service.. The service will be suspended in case, consumables are not provided.

¹⁴. Shortage in personnel, mainly clerks and security. Inability to hire new staff because of the financial crises

¹⁵. GI Tumer, Non HD and Breast Ca are urgently needed.

¹⁶. Shortage in Pediatricians and lab technicians

¹⁷. The operation room has been transferred to the new building on the 18th of February but not functioning yet

¹⁸. Lab reagents that are urgently needed for electrolyte. Some lab equipments are not functioning. New lab equipment has been received.

19. Some patients had to be referred to shifa hospital since the available functioning dialyses machines are not enough to handle all the required sessions for all the patients.

20. Fuel tanks are urgently needed, as the 2 available fuel tanks have been borrowed from local companies that want them back.

21. Elective surgical operations were suspended in February as a result of the high number of casualties resulted from the internal violence that took place during the last week of January and the first week of February

22. Shortage in bed linen was reported.

23. Shortage in stationary was reported in all the assessed hospitals.

24. Lack of fruit and vegetables for two continuous weeks in all the assessed hospitals, since the MoH was not able to pay for the food contractors.

Table 5: Summary of findings on Sentinel District Indicators- Gaza Strip, 1st – 28th February, 2007.

District	Service provision	Working hours	Staff attendance ²	2- months and current stock level. ³	Water, Electricity, Refrigerators	Others
North Gaza (10 clinics)	Reduced Diagnostic services in Jabalia clinic. ¹	Normal for 10 clinics.	Regular.	24 drug items are at zero availability. 5 drug items at less than 2-week stock. (Received partial stock of drug supply and full stock of Medical supplies on 12 th February, 2007).	Water Supply- normal in all clinics Electricity- Sporadic interruption of electricity. 5 clinics do not have generator. Refrigerators- 1 is broken down at shaimmaa clinic for the second month.	5 clinics with generator with continuous refilling of fuel except for 1 clinic. Intra-district communication is normal. PHC Consultations: increased from 42,299 in Dec. to 43,659 in Jan
Gaza (15 clinics)	Reduced Diagnostic services in two clinics. ⁴	Normal for 15 clinics.	Regular.	24 drugs items and 5 medical supply items at zero availability. (Received partial stocks of drug supply and Medical supplies on 19 th February, 2006).	Water Supply- interrupted for 2 days in one clinic Electricity -all clinics had interrupted electricity supply for 3-4 hrs / day. 6 clinics have no generator	9 clinics with generator with continuous refilling of fuel. Intra-district communication is normal. PHC Consultations: increased from 69,891 in Dec. to 72,731 in Jan.
Mid Zone (15 clinics)	Reduced Diagnostic services in two clinics. ^{4,5,6}	Normal for 15 clinics.	Regular.	14 drugs items and 2 medical supply items at zero availability. Received partial stock of drug supply and medical supplies on the 15 th	Water Supply- Water interruption in 2 clinics. ⁷ Electricity -all clinics had interrupted electricity supply for 3-4 hrs/ week. 9 clinics have no generator and 1	5 clinics with functioning generator with continuous refilling of fuel except for 1 clinic. ⁹ Intra-district communication is normal.

				February 2006.	generator in one clinic is broken down. ⁸	PHC Consultations: increased from 30,445 in Dec. to 32,776 in Jan
Khan Younis (12 clinics)	Reduced Diagnostic services. ^{4,10}	Normal for 12 clinics.	Regular.	20 drug items and 8 medical supply items - at zero availability. (Received partial stock of drug supply and Medical supplies on the 14 th February 2006)	Water Supply- normal in all clinics. Electricity - all clinics had interrupted electricity supply for 1-2 hrs / day. 9 clinics have no generator	3 clinics with generator with continuous fuel refilling. Intra-district communication is normal. PHC Consultations: increased from 33,184 in Dec. to 37,249 in Jan.
Rafah (4 clinics)	Reduced Diagnostic and Antenatal services. ^{4,11, 12}	Normal for 4 clinics.	Regular for all category of staff. ¹⁰	6 drug items and 1 medical supply item -at zero level. 3 drug items at less than 2 weeks stock. (Received partial stocks of drug supply and Medical supplies on 18 th January, 2006).	Water Supply- normal in all clinics. Electricity- no reported problems. Refrigerator- no reported problems	Intra-district communication is normal. PHC Consultations: decreased from 22,204 in Dec. to 21,538 in Jan

1. Chemistry and CBC are not functioning.

2. Staff attendance is normal. The interviewed staff has no intention to go on strike³. Received instruction on the use of the donated drugs.

4. Shortage in some lab reagents and some lab equipments are not functioning in the clinics that provide the service.

5. X-ray machine is not functioning in Dair El-Balah clinic for the third month

6. New lab has started to function in Zahra clinic.

7. Water Interruption in Dair El-Balah and Nusairat clinics for 1 week

8. A generator is urgently needed for Buraij clinic, since the clinic is functioning for 24 hrs.

9. Fuel refilling has stopped in Nusairat clinic where the level of fuel is zero for the second month

10. Most of the available lab equipment is not functioning properly

11. Most of the available lab equipment is not functioning properly and the x- ray film processors in Rafah and Tal Sultan clinics are out of order. Urgent need for lab equipments: CBC, Spectrophotometer and Centrifuge at 3 clinics. Sel- Pack reagent is urgently needed. Fridge for the lab is urgently needed, as well.

12. Ultrasound machine in Tal Sultan clinic is out of order for the third month

14. Shortage in stationary was reported in all districts'