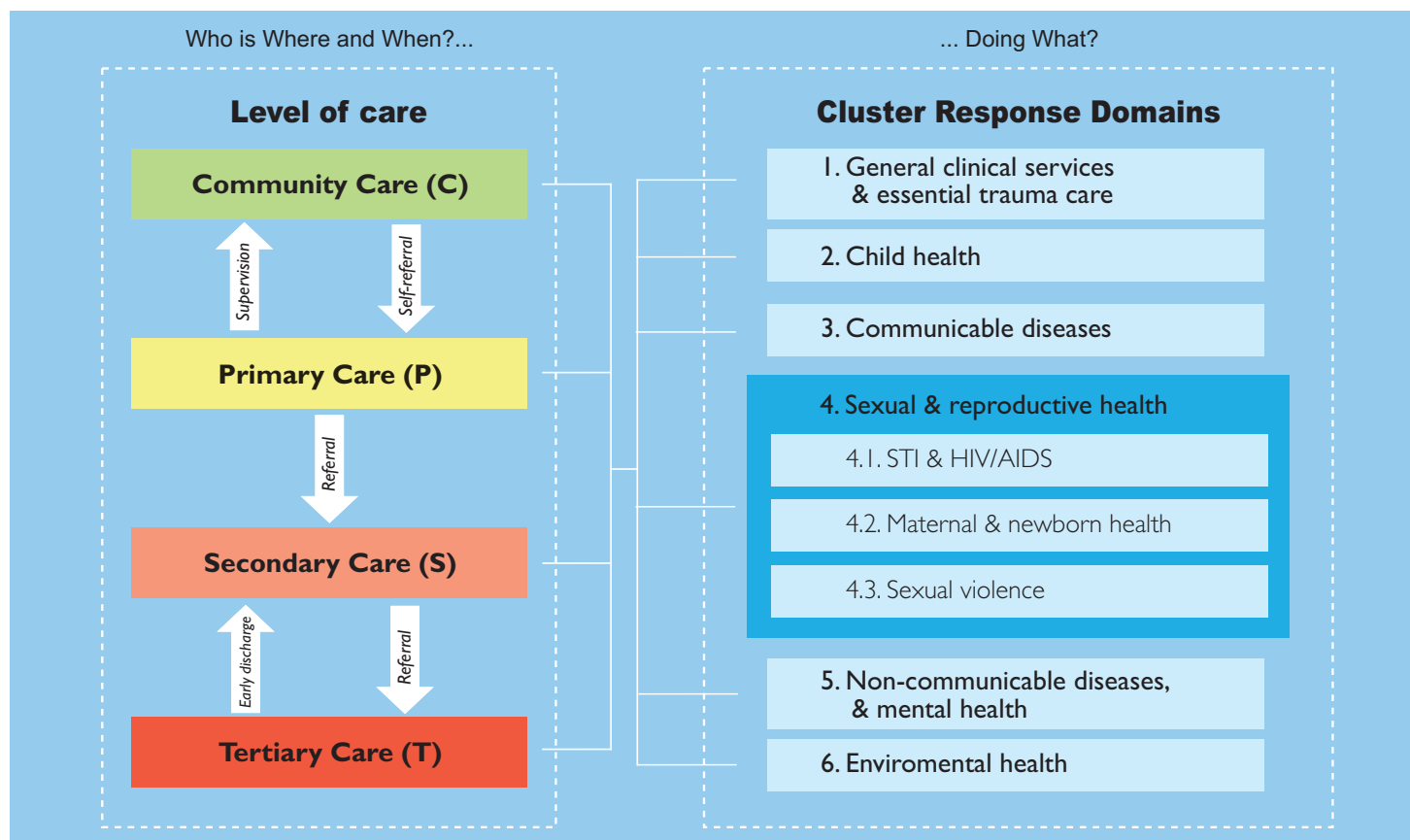


HEALTH RESOURCES AVAILABILITY MAPPING SYSTEM (HeRAMS)

Health Cluster Response Domains and Levels of Care



HeRAMS Check List for Services Provided at Community Level

of populated places in the primary care health facility's catchment area:

of trained & supervised active village health volunteers/workers in the primary care health facility's catchment area:

Health Response Domains		Health Services (RH MISP Services in bold)	# of populated places
Community Care			
C	0 Collection of vital statistics	1 Deaths and births 2 Others: e.g. population movements; registry of pregnant women, newborn children	
	2 Child health	1 Integrated Community Case Management (acute diarrhoea, pneumonia, confirmed malaria) by trained and regularly supervised village based health workers 2 Screening of acute malnutrition (MUAC and/or bilateral pitting edema of the legs), active case finding of SAM 3 Community site with trained and regularly supervised village based nutritional worker for early detection and treatment of moderate and severe acute malnutrition in under 5, and referral of SAM with medical complications	
	3 Communicable diseases	1 Vector control (IEC + impregnated bed nets + in/out door insecticide spraying) 2 Community mobilization for and support to mass vaccinations and/or drug administration/treatments 3 IEC on early identification and referral of locally priority diseases (e.g. malaria, acute watery diarrhoea, others)	
	1 STI & HIV/AIDS	1 Community leaders advocacy on STI/ HIV 2 IEC on prevention of STI/HIV infections and behavioural change communication 3 Ensure access to free condoms	
	2 Maternal & newborn health	1 Clean home delivery , including distribution of clean delivery kits to visibly pregnant women, IEC and behavioural change communication, knowledge of danger signs and where/when to go for help, support breast feeding	
	5 Non communicable diseases & mental health	1 Provide basic care and support, and promote self-care for people affected by NCD and chronic conditions, identify and refer severe cases for treatment, provide needed follow-up to people with chronic health conditions and disabilities discharged by facility-based health and social services	
	6 Environmental health	1 IEC on hygiene promotion and water and sanitation, community mobilization for clean up campaigns and/or other sanitation activities	

HeRAMS Check List

for mobile clinics & health facilities of I, II & III level of care

Health Response Domains		Health Services (RH MISP Services in bold)	Yes / No	
Primary Care				
P	1 General clinical services & essential trauma care	1 Outpatient services		
		2 Triage (four colour system)		
		3 First aid & basic resuscitation		
		4 Injury care: treatment of open wounds, fracture immobilization, patient stabilization and proper referral (including antibiotics and tetanus toxoid when needed)		
		5 Basic laboratory		
		6 Short hospitalization capacity (5-10 beds)		
		7 Referral capacity: referral procedures, means of communication, safe transportation		
	2 Child health	1 EPI: routine immunization against all national target diseases and adequate cold chain in place		
		2 Mobile team for supervision of village health workers running under 5 integrated community case management		
		3 Screening of acute malnutrition (MUAC or W/H, and/or bilateral pitting oedema)		
		4 Out patient treatment of severe acute malnutrition without medical complication		
	3 Communicable Diseases	1 Mobile team for outreach activities of the CMAM programs to nutritional village sites		
		2 Sentinel site of early warning system of epidemic prone diseases, outbreak response (EWARS)		
		3 Diagnosis and treatment of malaria		
		4 Diagnosis and treatment of TB		
	4 Sexual and reproductive health	1 STI & HIV/AIDS	1 Other local relevant communicable diseases (e.g. sleeping sickness)	
			1 Syndromic management of sexually transmitted infections	
			2 Standard precautions: disposable needles & syringes, safety sharp disposal containers, Personal Protective Equipment (PPE), sterilizer, P 91	
			3 Availability of free condoms	
			4 Prophylaxis and treatment of opportunistic infections	
			5 HIV counselling and testing	
			6 Prevention of mother-to-child HIV transmission (PMTCT)	
		7 Antiretroviral treatment (ART)		
		2 Maternal & newborn health	1 Family planning	
2 Antenatal care: assess pregnancy, birth and emergency plan, respond to problems (observed and/or reported), advise/counsel on nutrition & breastfeeding, self care and family planning, preventive treatment(s) as appropriate				
3 Skilled care during childbirth for clean and safe normal delivery				
4 Essential newborn care: basic newborn resuscitation + warmth (recommended method: Kangaroo Mother Care - KMC) + eye prophylaxis + clean cord care + early and exclusive breast feeding 24/24 & 7/7				
5 Basic emergency obstetric care (BEOC): parenteral antibiotics + oxytocic/anticonvulsant drugs + manual removal of placenta + removal of retained products with manual vacuum aspiration (MVA) + assisted vaginal delivery 24/24 & 7/7				
6 Post partum care: examination of mother and newborn (up to 6 weeks), respond to observed signs, support breast feeding, promote family planning				
7 Comprehensive abortion care: safe induced abortion for all legal indications, uterine evacuation using MVA or medical methods, antibiotic prophylaxis, treatment of abortion complications, counselling for abortion and post-abortion contraception				
3 Sexual violence		1 Clinical management of rape survivors (including psychological support)		
		2 Emergency contraception		
		3 Post-exposure prophylaxis (PEP) for STI & HIV infections		
5 Non communicable diseases & mental health	1 Hypertension treatment			
	2 Diabetes treatment			
	3 Other locally relevant non communicable diseases			
	4 Mental health care: support of acute distress and anxiety, front line management of severe and common mental disorders			
6 Environmental health	1 Health facility safe waste disposal and management			
Secondary Care				
S	1 General clinical services & trauma care	1 Presence of specialized MD in addition to General Practitioners, including at least one general surgeon		
		2 OPD with surgical triage		
		3 Inpatients services (medical, paediatrics and obstetrics and gynaecology wards)		
		4 Trauma & surgical care, and elective surgery through at least 1 operating theatre with or without gas anaesthesia		
		5 Post-operative rehabilitation for trauma related injuries		
		6 Laboratory services		
		7 Blood bank service		
		8 X-Ray service (Basic Radiologic Unit)		
	2 Child health	1 Management of children classified with severe or very severe diseases (parenteral fluids and drugs, O2)		
		2 Stabilization Centre for the management of Severe Acute Malnutrition with medical complications		
Maternal & newborn health	Comprehensive emergency obstetric care: BEOC + caesarean section + safe blood transfusion			
Non communicable diseases & mental health	1 Disabilities rehabilitation & support			
	2 Outpatient psychiatric care and psychological counselling			
	3 Acute psychiatric inpatient unit			
Tertiary Care				
T	1 General clinical services & trauma care	1 Intensive Care Unit		
		2 Specialized trauma and surgical services, including reconstructive procedures		
		3 Trauma care and elective surgery through 2 or more operating theatres with gas anaesthesia		
		4 Laboratory services with NA/K, emogas		
		5 X-ray with stratigraphy, ecography, RMG and/or CT scan		
		6 Early discharge of post operative patients through referral to secondary hospitals, in mass casualty scenarios, including early follow up at home with mobile team for post operative care		
		7 MEDEVAC procedures, transport means and network for referral of patients in need of highly specialized care		