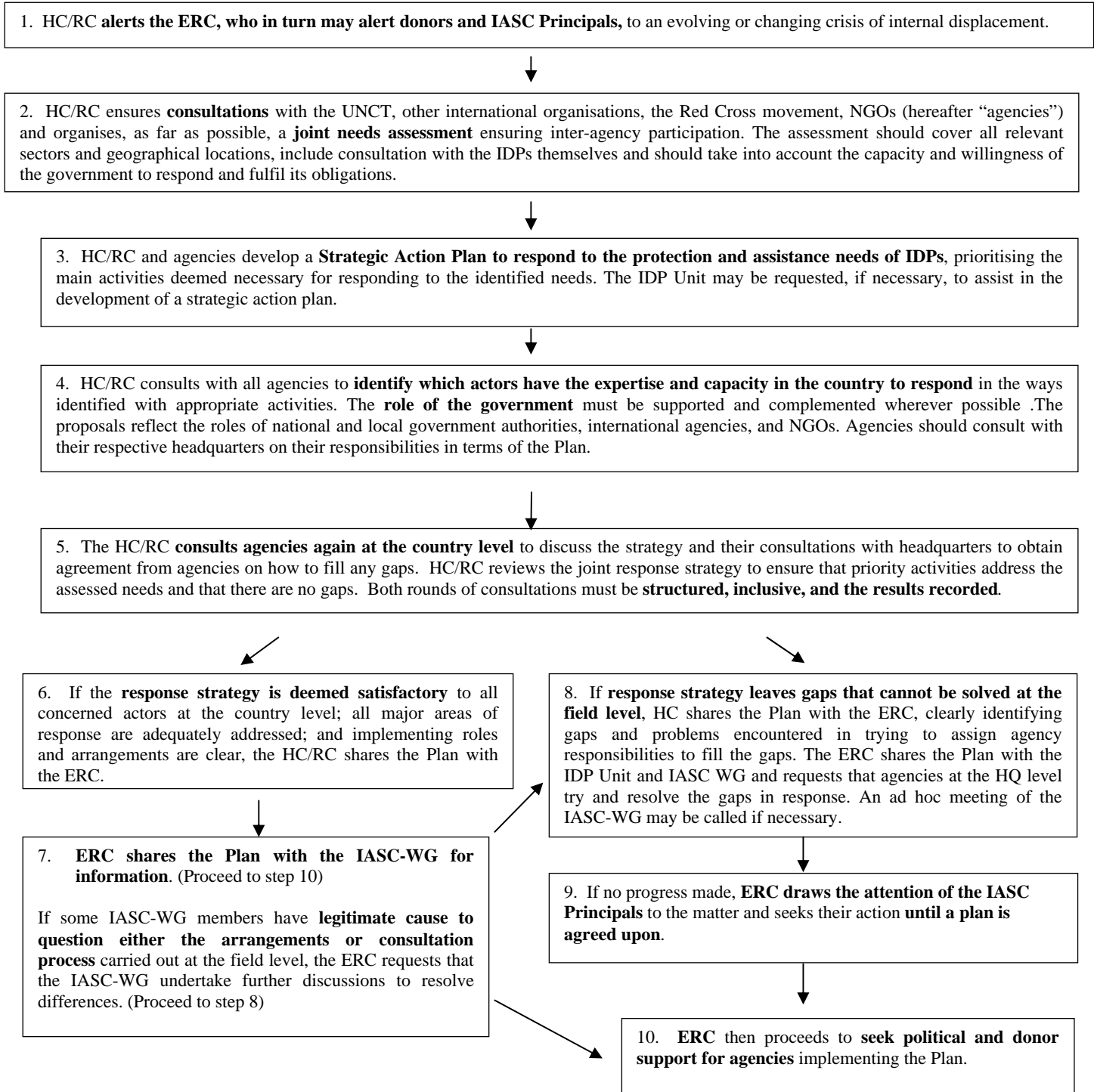


## Procedural Steps for Developing an IDP Response Strategy

Based on humanitarian risk analysis and/or early warning assessments, the Country Team and HC need to be aware of all factors that could potentially lead to displacement or cause a change in an existing crisis of internal displacement. Pursuant to existing policy, all Country Teams in countries experiencing internal displacement should have in place a comprehensive strategic action plan for meeting the protection and assistance needs of IDPs. If this is not yet the case, or if a new displacement situation develops or changes significantly, the following steps should be followed in a prompt and timely manner:



*Once the plan is developed and approved, it is the HC/RC's responsibility both during crises and in protracted situations to monitor and ensure its ongoing implementation. The HC/RC should report through regular reporting procedures on the plan's implementation and any problems or changes therein to the ERC.*