

Increasing access to health workers in remote and rural areas through improved retention

Background paper

for the first expert meeting to develop evidence-based recommendations to increase access to health workers in remote and rural areas through improved retention

Geneva, 2-4 February, 2009

February 2009

Table of contents

Introduction.....	3
1) Global shortages and inequalities at national level.....	4
2) Access to health workers in remote and rural areas – documenting the problem	6
3) Health workers’ choices of location	10
4) Attracting and keeping people in remote and rural areas - what works?.....	12
5) Gaps in the evidence, methodological challenges, and country level implementation issues.....	18
6) Research questions and concluding remarks	20
7) Annexes	21
References.....	23

This paper was prepared by Carmen Dolea, with support from Laura Stormont, Pascal Zurn, Daniel Shaw and Jean-Marc Braichet, all from the Health Workforce Migration and Retention Unit, Department of Human Resources for Health, Cluster of Health System and Services, World Health Organization, Geneva, Switzerland.

Introduction

The Department of Human Resources for Health at WHO is implementing a programme of work to support Member States to address the issue of inequitable distribution of health workers in remote and rural areas. This programme is a response to requests from Member States affected by the global health workforce crisis^{1,2}, as well as a response to the recent calls for action from the Kampala Declaration and Agenda for Global Action³ and the G8 Communiqué⁴. Moreover, increasing access to health workers in such underserved areas will help countries improve their health outcomes, based on the values, principles and approaches of primary health care, as highlighted in the recent “World health report: primary care now more than ever” (WHO, 2008).

Currently, there is a lack of specific operational solutions and recommendations that countries can adapt to their specific context to respond to this challenge. This is particularly important, as the topic is of relevance for both developed and developing countries. In this context, WHO’s programme of work aims to provide up-to-date and evidence-based recommendations to Member States on effective strategies that can be employed to ensure health workers are where they are most needed in a sustainable manner. It consists of three main strategic pillars:

- building and sharing the evidence base on effective strategies that increase access to health workers in remote and rural areas
- supporting countries to evaluate, adapt and implement such strategies
- developing and disseminating evidence-based recommendations on this topic.

This paper serves as background documentation for the first expert meeting for developing the evidence-based recommendations for increasing access to health workers in remote and rural areas through improved retention, to be held in Geneva on 2-4 February 2009. It is intended to provide an overview of the issues, challenges and potential solutions to the problem of inequitable access to health workers in remote and rural areas.

The paper is divided in six main sections:

1. Context: the global health workforce crisis and re-emphasizing the importance of the health workforce for achieving health outcomes within strong health systems.
2. Overview of indicators that can be used to document and measure the problem of maldistribution of health workers.
3. Choices of location of health workers as a critical element in the design of effective interventions and the main factors that influences those choices.
4. Analysis of the available evidence on effective interventions for increasing access to health workers in rural and remote areas and proposes a typology for these interventions.
5. Gaps in the evidence, methodological challenges and challenges for implementation at country level.
6. Concluding remarks and highlights for further discussion; potential research questions for which recommendations will be developed; and proposals for the scope of these recommendations.

¹ http://www.who.int/gb/ebwha/pdf_files/WHA57/A57_R19-en.pdf

² http://www.who.int/gb/ebwha/pdf_files/WHA59/A59_R23-en.pdf

³ <http://www.who.int/workforcealliance/Kampala%20Declaration%20and%20Agenda%20web%20file.%20FINAL.pdf>

⁴ http://www.g8summit.go.jp/eng/doc/doc080714__en.html

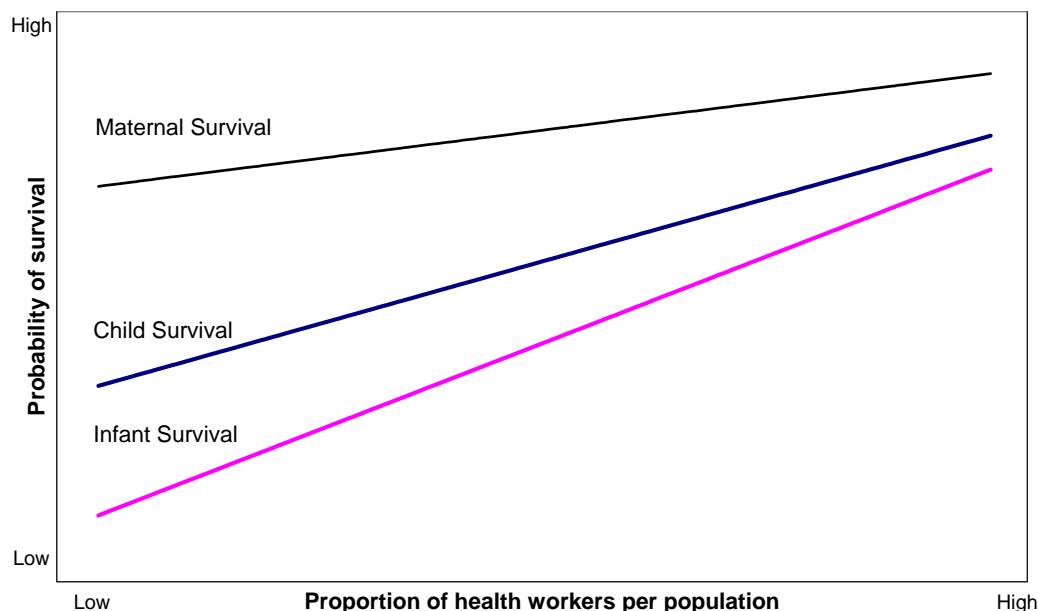
1) Global shortages and inequalities at national level

It is by now widely acknowledged that health workers, as an integral part of health systems, are a critical element in improving health outcomes. *The World Health Report 2006: working together for health* sounded the alarm that, without sufficient numbers of adequately trained and supported health workers, there is a significant risk of not attaining the health-related Millennium Development Goals (MDGs) (WHO, 2006)

Country evaluations of disease-oriented programmes have found that the lack of appropriately trained and motivated health workers is one of the major bottlenecks in implementing evidence-based health interventions to improve maternal and child health, and to address HIV/AIDS, malaria and tuberculosis (Dreesch et al., 2005). The absence of well educated and properly managed health workers was also identified as one of the health systems constraints to achieve the MDGs, along with poor infrastructure, drugs and supply systems, and information systems (Travis et al., 2004).

There is indeed a positive correlation between the availability of health workers and better health outcomes, as well as increased coverage of essential health interventions (figure 1). These correlations have been demonstrated in a number of cross-country ecological analysis (Robinson and Wharrad, 2000; Robinson and Wharrad, 2001), (Anand, 2004), (Zurn et al, 2005), (Speybroek et al, 2006), (Anand and Barnighausen, 2007).

Figure 1. Density of health workers (doctors, nurses and midwives) and probability of survival

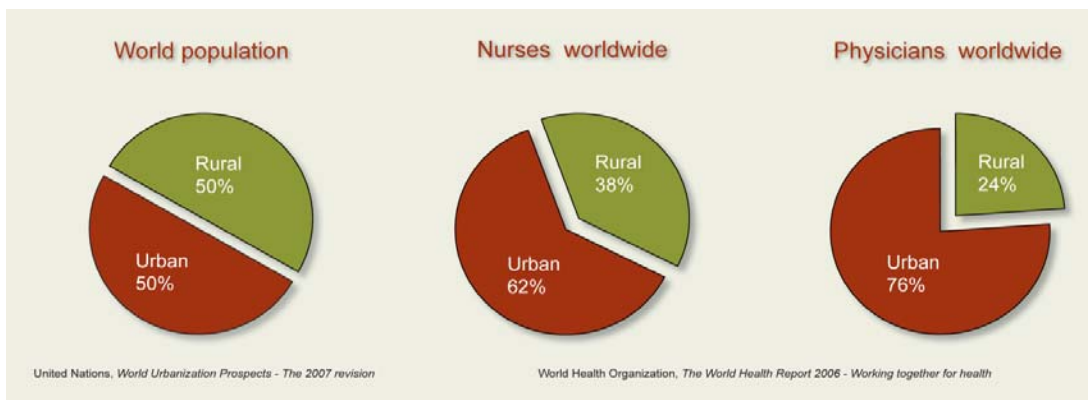


Source: World health report 2006: working together for health. WHO, 2006.

The World Health Report 2006 estimated that the world lacks about 4 million health workers, if a minimum level of health outcomes is to be achieved (WHO 2006). The report identified 57 'crisis' countries as being the most affected by this dearth in health personnel, predominantly in Sub-Saharan Africa and Asia. However, health worker shortages are currently reported by many other countries, both developed and developing. Such shortages are symptoms of a poorly managed health workforce and health care system. The causes of the crisis are complex, and have to do with insufficient production capacity, but also with an inability to keep the workers that are being produced in the places where they are most needed. Therefore, because of the complex web of factors that influences the mobility of health workers, any efforts to scale up the health workforce in response to the crisis must be combined with effective measures to attract and maintain both existent and newly trained health workers where they are needed most.

In the majority of countries, rural and remote areas are usually lacking sufficient numbers of health workers. Approximately one half of the global population lives in rural areas, but these areas are served by only 38% of the total nursing workforce and by less than a quarter of the total physicians' workforce (figure 2). At the country level, imbalances are even more prominent (see section 2). There are also countries, such as some francophone sub-Saharan African countries (Cote d'Ivoire, Mali, Democratic Republic of Congo), where there is large overproduction of health workers, with medical unemployment in urban areas, and at the same time with shortages in rural areas. Other countries have apparently a sufficient numbers on average, but with shortages in rural areas (Germany, France).

Figure 2. Rural/urban worldwide distribution of physicians, nurses and population



2) Access to health workers in remote and rural areas – documenting the problem

Definitions

The task of defining rural areas has always been particularly challenging. The term 'rural' invokes images of farms, villages, small towns, and open spaces. But there is no consensus on specific definition for these areas. This also reflects the reality that “rural” and “urban” are multidimensional concepts, making clear-cut distinctions between the two difficult. Is population density the defining concern, or is it geographic isolation? Is it small population size that makes it necessary to distinguish rural from urban? If so, how small is rural? Is there a socio-economic dimension that differentiates between the two? The OECD has recently proposed a common definition for the purpose of conducting comparative analysis between countries for rural development (see box 1 in the annex).

The United Nations itself recognizes the difficulty of defining urban and rural areas globally, stating that, “because of national differences in the characteristics that distinguish urban from rural areas, the distinction between urban and rural population is not amenable to a single definition that would be applicable to all countries” (UN, 1998). Rural areas are usually defined as “what is not urban” (United Nations, 2004), and so inconsistencies in the definition of what is urban lead to inconsistencies in characterizing what is rural. An urban agglomeration is generally easier to define. The United Nations describes it as a place that “comprises a city or town proper and also the suburban fringe or thickly settled territory lying outside, but adjacent to, its boundaries. A single large urban agglomeration may comprise several cities or towns and their suburban fringes. (United Nations, 1998).

Each country has its own definition for these terms, taking into account in most cases two main elements: the settlement profile (population density, availability of economic structures) and the accessibility from an urban area (distance in kilometres or hours drive).

Because of difficulties in agreeing on a single definition, for the purpose of this paper, the following definitions are proposed:

'Rural areas' are considered to be those areas which are not urban in nature. An 'urban agglomeration' refers to the de facto population contained within the contours of a contiguous territory inhabited at urban density levels without regard to administrative boundaries. It usually incorporates the population in a city or town plus that in the suburban areas lying outside of - but being adjacent to - the city boundaries (United Nations, 2008).

"Under-served areas" can be interpreted in the broadest sense. It refers to geographical areas where relatively poorer populations reside - areas that have limited access to qualified health care providers and health services of adequate quality. It may include, for example: remote rural areas; small or remote islands; urban slum areas; areas that are in conflict or post-conflict; refugee camps; and areas inhabited by minority or indigenous groups⁵.

⁵ http://www.who.int/alliance-hpsr/callsforproposals/Alliance%20HPSR_IncentivesAttractAndRetainHealthWorkers.pdf

This paper however focuses on recent research conducted mainly in rural and remote areas, with less emphasis on areas in conflict or post-conflict, urban slums, and refugee camps. Further revisions and updates will expand on those areas if deemed necessary by the expert group.

In addition, the paper has mainly focused on three types of health workers: doctors, nurses and midwives. Other types of health workers, such as dentists, pharmacists, managers and support workers can be further analysed in further revisions.

Inequalities and imbalances – measurement issues

Almost four decades ago it was noted that "the availability of good medical care tends to vary inversely with the need for it in the population served" (Hart, 1971). This remains still valid today.

Documenting the extent of the inequalities and maldistribution of health workers can be done using a variety of measures. The most commonly used are the health workers densities in urban compared with rural areas. Other measures include the vacancy rates, turn-over rates, attrition rates, absenteeism, and unemployment rates.

The global averages presented in the introduction hide even deeper inequalities on a country by country basis, for both developed and developing countries. For example, in Bangladesh: 30% of nurses are located in four metropolitan districts where only 15% of the population lives (Zurn et al, 2004). In South Africa rural areas are inhabited by 46% of the total population, but only 12% of doctors and 19% of nurses are working there (Hamilton and Yau, 2004), In South Africa (Statistics SA, 1996, Rensburg, 1999), where 46% of the population lives in rural areas, only 27% of general practitioners, 25% medical specialists, 7% dentists, and 6% psychologists practice in those areas.

In Kenya, 64% of psychiatrists are located in the capital, Nairobi, which accounts for only 7.5% of the population; and in 2002 in Mali, 265 midwives were posted in Bamako or in regional hospitals, while only 164 were working at the peripheral level. As a result, only 24% deliveries were attended by a skilled professional.

In USA (Ricketts, 2000) – 9% of registered physicians practice in rural areas, whereas 20% of the population live in rural areas. In France there are also large inequalities in the density of general practitioners, with well-off areas of the south of France and Paris *intra-muros* being much more endowed than the centre or north (Cash and Ulmann, 2008) (figure 3).

While rural Canada covered 99.8% of the nation's territory, and accounted for 24% of the Canadian population in 2006, this only represents 9.3% of the physician workforce. Often times, shortages in rural areas in developed countries causes a pull factor for health workers from developing countries, with severe consequences for the latter. Table 1 presents the density of doctors by size of census metropolitan areas and agglomerations (urban areas) and by Metropolitan Influence Zone categories (rural areas) (Dumont et al, 2008).

Figure 3. France density of general practitioners

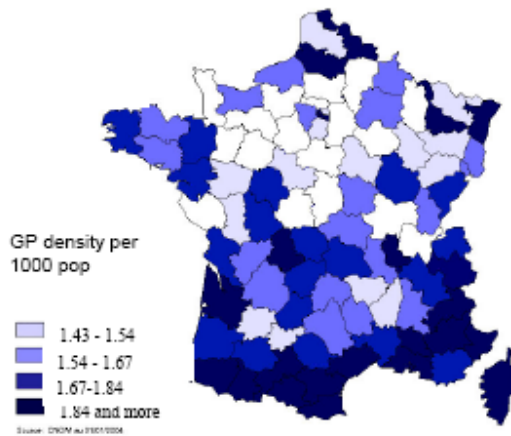


Table 1. Share of foreign-trained physicians and density of physicians by type of urban/rural communities, 2006

Rural /Urban	Size of area	Share of foreign-trained physicians	Density of physicians
Urban communities	10,000-24,999	39.6	2.4
	25,000-49,999	34.3	2.2
	50,000-99,999	18.6	1.9
	100,000-499,999	22.7	2.7
	500,000-999,999	16.8	3.4
	1,000,000+	21.2	2.1
Rural com.	Strong MIZ	27.4	0.7
	Moderate MIZ	26.9	1.0
	Weak MIZ	40.2	1.8
	No MIZ	30.1	0.7

Source: Dumont et al, 2008

Vacancy data can give some indication of the inability of an organization to fill a post. They are defined as % of unfilled posts. For example in Tanzania in 2003, 60% of posts for personnel with nursing skills were vacant (Wyss 2003). The NHS in England reports 'three month' vacancies- i.e. posts that have remained unfilled for three months or more. The most recent vacancy data available is for March 2006 in the NHS in England, and coincides with the period when financial difficulties were impacting on staffing in the NHS. Filled but unfilled posts that are recorded as vacant may give some indication of the number of jobs that are 'hard to fill' because of staffing movement or shortages. The regional pattern of vacancies does vary across profession; for doctors, the northern and eastern regions have tended to report higher than average levels of three months vacancies, while for nurses, the hardest to fill posts were reported in the regions in London and elsewhere in the South East of England, reflecting higher living costs in these regions for non-medical staff (tables 2 and 3).

Table 2. Three-month vacancy rates for doctors/dentists by geographical distribution, 2006, NHS

Total England	1.8%
North East Total	2.3%
North West Total	2.5%
Yorkshire and the Humber Total	3.0%
East Midlands Total	1.7%
West Midlands Total	1.3%
East of England Total	2.2%
London Total	1.8%
South Central Total	0.7%
South East Coast	1.1%
South West Total	0.9%

Source: NHS Vacancy Survey 2006

Table 3. Three month vacancy rates for registered nurses by geographical distribution, 2006, NHS

Total England	0.9%
North East Total	0.6%
North West Total	0.4%
Yorkshire and the Humber Total	1.0%
East Midlands Total	0.6%
West Midlands Total	0.2%
East of England Total	1.4%
London Total	2.0%
South Central Total	1.1%
South East Coast	1.0%
South West Total	0.9%

Source: NHS Vacancy Survey 2006

In France the question of vacant post is regularly considered in studies on physicians, particularly for specialties that are less attractive. Today, there is more a problem of geographical maldistribution rather than a lack of physicians. The number of vacant posts varies from one region to another, with a particularly difficult situation in the overseas territories. Based on a report in 2006 (Berland report, 2006, cited in Cash and Ulmann, 2008), the vacancy rates are higher than 30% in Mayotte, 41 % in Guyana and Guadelupe, and 20% for the regions of Auvergne, Basse-Normandie, Bourgogne, Franche-Comté, Limousin, Lorraine, Nord-Pas-de-Calais, Martinique et Picardie. The vacancy rates by specialties are higher for maxillo-facial surgery, plastic surgery, oncology, emergency medicine, forensic medicine, anesthesiology, psychiatry and radiology. (Cash, Ulmann, 2008).

There are also other indicators to measure the movements of health workers in general, such as turnover rates, absenteeism, unemployment or dual employment. For example, USA had 20-30 % nursing turnover rate in 2002, compared to 50% in 1950s (Zurn et al, 2005). In South Africa there were 35 000 unemployed registered nurses, despite 32 000 vacancies (OECD; 2004). However, it is difficult to get detailed data on these measures broken down by geographical area.

3) Health workers' choices of location

Trends in health workforce

From the literature, we can observe three main trends in health workforce today:

- People are moving very strongly towards work-life balance models
- People are motivated by a complex structure of rewards, in which non-financial benefits play an increasingly important role
- People will move quickly to another job or place if their expectations are not met.

In this context, it is increasingly difficult for managers and policy makers to recruit and retain an adequately skilled and motivated health workforce. Motivation and job satisfaction have been proven to be critical to increasing the performance of health workers and thus the performance of the health system. The problems in recruitment and retention will lead to workforce shortages, while inability to motivate health workers will lead to decreased productivity. It is therefore essential for policy makers to have a good understanding of recruitment, retention and motivation issues.

Conceptual framework and the research domain

The final result of having health workers in remote and rural areas depends on two inter-linked aspects:

- a) the factors that influence the decision or choice of health workers to come to, stay in or leave those areas, and
- b) the extent to which health system policies and interventions respond to these factors.

The literature on health worker retention in general covers two main aspects:

1) The extent of the problem:

- a. descriptive studies highlighting the extent of imbalances and deficits in health personnel in rural and remote areas
- b. analysis of factors influencing decisions and choices of health workers to come to, stay in or leave remote and rural areas.

2) Retention interventions, either proposed and/or evaluated:

- a. descriptions of potential/proposed interventions, which could be designed in a specific context, given the factor analysis, but which were never implemented
- b. evaluations of specific retention strategies.

Table 4 presents a summary of studies that attempted to document the problem and identify the factors affecting labour participation, choice of location, and decision to stay in or quit rural or remote areas. We identified 55 studies that cover 30 countries.

Factors influencing choices of location

The factors affecting movements of health workers need to be analysed and understood in the larger context of the global health labour market. There is a vast literature on factors affecting choices of location in rural and remote areas, and they have been well identified and summarized in some recent reviews (Dieleman, 2006, Lehmann et al, 2008). Recently, these factors have become to be known as 'push' and 'pull' factors, mainly in relation to research on internal and international migration of health workers (Zurn et al, 2004, WHO, 2004).

"Pull" factors are identified as those which attract an individual to a new destination. These might include improved employment opportunities and/or career prospects, higher income, better living conditions or a more stimulating environment. 'Push' factors are those which act to repel the individual from a location. They often mirror "pull" factors and might include loss of employment opportunity, low wages, poor living conditions, lack of schooling for children, etc. (Lehamnn et al, 2008).

There are many theories and models trying to explain the factors involved in workers' mobility. Some originate in economic theory, such as the Neoclassic Wage Theory, which suggests that the choice is driven largely by financial motives and by the probability of finding employment (in Lehmann et al, 2008). In this sense, it has been argued that "a health worker will accept a job if the benefits of doing so outweigh the opportunity cost" (Hongoro, Normand, 2006).

There are also behavioural theories, starting with those of Maslow and Herzberg, which put at the centre of a more complex decision-making process the satisfaction that workers get out of their job.

Given their importance in the design and implementation of retention strategies, it is critical to have a very good understanding of these factors. Often, however, understanding them requires careful research methods, as these factors are related to human behaviour and individual preferences, which are difficult to quantify. Various methods have been proposed to identify the factors related to choices of location, from more traditional semi-structured interviews or focus groups, to more recent methods such as the discrete choice experiment. The latter method is an approach by which detailed choices are presented to health workers, and they are asked to choose between two possible scenarios until a set of factors is identify that fully explain the decisions to remain in rural or remote areas (Chomitz et al, 1998, Mangham and Hanson 2007, Hanson and Jack, 2007, Mangham, Hanson, McPake 2009).

The complexity of these factors makes their categorization difficult, but they are generally discussed as individual, organizational or broader environment factors. They do not influence health workers' choices and decisions for location or practice in an isolated manner, but rather interact and influence each other. Generally discussed as individual, organizational and larger environmental factors, they need to be well identified so that appropriate responses can be designed. Therefore, the research methodologies used to elicit these factors need to be harmonized and their pertinence improved.

4) Attracting and keeping people in remote and rural areas - what works?

As said before, the final result of having health workers in remote and rural areas depends on two inter-linked aspects:

- a) The factors that influence the decision or choice of health workers to come to, stay in or leave those areas, and
- b) The extent to which health system policies and interventions respond to these factors.

What often happens is that the health system response is not aligned with the factors influencing health workers choices, and this response is most often a stop-gap measure (such as for example increasing wages or rural allowances), rather than a longer term cohesive strategy.

An extensive literature review conducted by WHO has found that 19 countries have put in place various interventions to respond to this challenge, but these interventions are at various stages of implementation, and very few have been actually evaluated for impact. The methodology used for this review is detailed in box 2 in the annex. Table 5 presents a summary of the studies that either described retention strategies or evaluations of such strategies (table 5).

Mapping the policy interventions

Six recent published literature reviews, of which two are systematic reviews and one is a Cochrane protocol for a systematic review, have attempted to provide a systematic analysis of the literature on the various strategies that have been used to increase access to health workers in remote and rural area (Grobler et al, 2005, Chopra et al, 2008, Bourgueil et al, 2006, Lehmann et al, 2008, Sempowski et al, 2003, Wallis-Shattuck, 2008). Other on-going reviews have also attempted an analysis of these various retention strategies (World Bank, 2009, forthcoming).

Based on these reviews, it is proposed to group the various interventions into the following three categories or domains of intervention:

- a) education and regulatory interventions,
- b) monetary compensation (direct and indirect financial incentives), and
- c) management, environment and social support.

This grouping is proposed for further discussion during the first expert meeting. Table 6 presents the main types of interventions in each of the proposed category.

Table 6. Categories of interventions used to improve retention of health workers in remote and rural areas

Category of intervention	Examples
A. Education and regulatory interventions	• Targeted admission of students from rural background
	• Recruitment from and training in rural areas
	• Changes / improvements in medical curricula
	• Early and increased exposure to rural practice during undergraduate studies (diversification of location of training sites)
	• Educational outreach programmes
	• Community involvement in selection of students
	• Compulsory service requirements (bonding schemes)
	• Conditional licensing (license to practice in exchange of location in rural areas for foreign doctors)
	• Loan repayment schemes (paid studies in exchange of services in rural areas for 4-6 years)
	• Producing different types of health workers (mid-level cadres, substitution, task shifting)
• Recognize overseas qualifications	
B. Monetary compensation (direct and indirect financial compensation)	• Higher salaries for rural practice
	• Rural allowances, including installation kit
	• Pay for performance
	• Different remuneration methods (fee for service, capitation etc)
	• Loans (housing, vehicle)
	• Grants for family education
	• Other non-wage benefits
C. Management, environment and social support	• General improvement in rural infrastructure (housing, roads, phones, water supplies, radio communication etc)
	• Improved working and living conditions, including opportunities for child schooling and spouse employment, ensured adequate supplies of technologies and drugs
	• Supportive supervision
	• Support for continuous professional development, career paths
	• Special awards, civic movement, and social recognition
	• Flexible contract opportunities for part-time work
	• Measures to reduce the feeling of isolation of health workers (professional/specialist networks, remote contact through telemedicine and telehealth)
	• Increased opportunities for recruitment to civil service

Aligning choices of location with interventions

Also observed is often times a lack of coherence between what is proposed as a retention strategy and the factors that matter for health workers in their choice for location. Most often countries have tried to implement financial incentives. This is despite the fact that factor analysis studies have consistently showed that financial incentives and awards are neither the first nor the most important factor in the decision to leave or stay in a remote or rural area. Moreover, this type of intervention can be very costly, and may not be sustainable in the long run, and there is a risk of spill-over effects towards other service sectors.

Table 7 attempts a correlation between the factors influencing the choices and decisions of health workers to practice in remote and rural areas and the categories of interventions that could respond to those factors. The deepest concerns of health workers when it comes to practicing in remote and rural areas are those related to the socio-economic environment, such as working and living conditions, access to education for children, availability of employment for spouses, insecurity, and work overload. It has been observed that strategies that can respond to these concerns are rarely designed and implemented by governments. Effective interventions must operate on the set of key determinants, and will need to address local contextual factors as well as broader sectoral factors that are affecting worker motivation at the local level.

Table 7. Push and pull factors for the movement of health workers from rural to urban areas, by category of potential policy intervention

Category of retention intervention	Push factors	Pull factors
Education and regulatory interventions	<ul style="list-style-type: none"> • desire for further training • lack of appropriate skills • desire to get international experience 	<ul style="list-style-type: none"> • access to continuing medical education and professional development
Monetary compensation (direct and indirect financial incentives)	<ul style="list-style-type: none"> • poor remuneration • lack of private sector or opportunities for moonlighting 	<ul style="list-style-type: none"> • better remuneration • allowances
Management, environment and social support	<ul style="list-style-type: none"> • poor working and living conditions • lack of clear career profiles • lack of schooling for children and jobs for spouses • work overload • lack of management support • emotional burn-out • decline of health services • political conflicts and wars • social unrest 	<ul style="list-style-type: none"> • improved standards of living • improved working conditions • opportunities for education of children • better supervision

“Bundled” interventions

Another important finding is that single interventions are not effective, as the attraction and retention factors are complex and intricate. Therefore, the strategies to attract and retain health workers in remote and rural areas should include a set of combined or “bundled” interventions. For example, in Thailand a complex programme was put in place which included regulatory interventions (compulsory contract of 3 years of public work after graduation), coupled with economic aspects (rural development project and financial incentives), as well as education and managerial interventions (rural recruitment and training in rural health facilities; development of community medicine, improved personnel management). The results after 30 years showed a reduction of the differences between urban and rural density of health workers per population (figure 4).

What works?

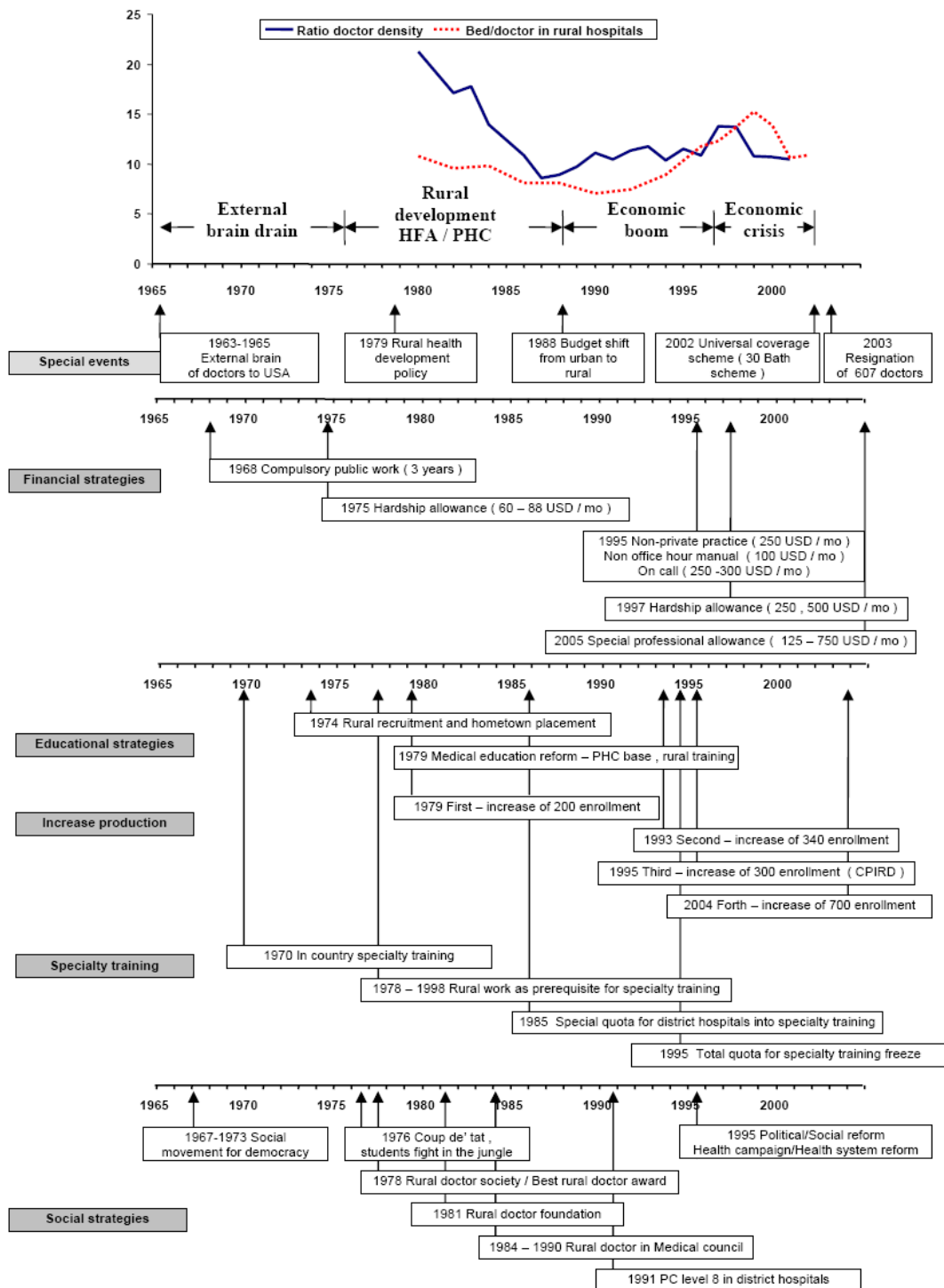
The obvious question is what works and why? The answer is neither simple nor evident. In general, the effectiveness and sustainability in the long term of all these various interventions need to be better understood and demonstrated. There is very little evidence and the quality of much of what exists is weak. Grading this evidence is even a greater challenge. We found 31 studies in which some sort of evaluation of the intervention has been presented, although the strength of this body of evidence is fairly weak. The studies cover 15 countries. Tables 8, 9, and 10 in the appendices present examples of studies that have conducted evaluations of strategies that aimed at increasing access to health workers in remote and rural areas, for each of the three proposed domains of interventions.

However, given the current state of the evidence some key messages can still be extracted to begin to respond to the question “what works?”

A. Education and regulatory interventions:

- Health professionals from rural background are more likely to practice in rural areas (consistent findings from observational studies)
- Clinical rotations in a rural setting may influence medical students’ subsequent decision to work in an underserved area (quasi-randomized trials)
- Adapting curricula to include rural health issues improve competences to work in rural areas and creates more interest to work in these areas
- The effectiveness of compulsory placement has been assessed by descriptive surveys with inconclusive results (it addresses the short term maldistribution, but is criticized for alienating people from the profession, and for the difficulties in administration and enforcement)
- Loan repayment schemes, direct incentives and medical-resident programmes to encourage rural placement have the highest service completion rates and physicians retention rates

Figure 4. Reduction in the differences between urban and rural densities of health workers in Thailand, following a complex set of retention strategies



Source: Noree et al, 2005

B. Type and level of remuneration.

- Direct financial incentives to practice in rural areas may encourage rural practice, in particular in developed countries, but reports from developing countries are not positive, with the exceptions perhaps of a few countries, such as mali, Zambia, and South Africa (Perry, 2006, Souleyman 2008, Coulibaly et al 2008, Reid, 2004, Koot, 2005)

C. Management, environment and social support:

- Professional and community support to rural workers encourages rural practice (but no quantitative results from an actual intervention); it can be achieved by supportive supervision, internet access and community involvement projects, as well as by professional networks) (Loevinsohn et al, 1995, Marquez and Keanne, 2002, Lehamn et al, 2008)
- Very few countries have implemented large scale interventions to improve the infrastructure and living conditions, and evaluations of these interventions have been published (Mali, Thailand and Zambia are such examples) (Noree et al, 2005 Wibulpolprasert et al, 2003, Coulibaly, 2008, Jabot et al, 2008, Koot, 2005). This is despite the fact that factors that rank highest in workers' preferences and choices of location are precisely those related to the local infrastructure, isolation and working conditions.

The following section brings in some discussion about the quality of the evidence for these strategies.

5) Gaps in the evidence, methodological challenges, and country level implementation issues

Gaps in data and knowledge about choices for location

National HRH databases need to be further strengthening to allow for good quality description of health worker distribution in rural and remote areas.

The methods used to identify workers preferences and choices for location need to be further refined. They will need to consider – among other things – whether differences exist between different types of health workers.

Gaps in methodology, monitoring and impact evaluation

As the current evidence points out, there is a large body of knowledge on the descriptive aspects of retention (i.e. factors influencing motivation and retention, job satisfaction etc), but far less knowledge on the impact of the various strategies and the challenges related to their implementation.

There are very few evaluations to show the impact and effectiveness of interventions, specifically in developing countries. There is very little rigorous evidence to support any financial, regulatory, education or management interventions to improve access to health workers in remote and rural areas. Methodological challenges for these kinds of evaluations are often one of the reasons for this dearth of knowledge.

Applying rigid criteria to assess the quality of these evaluations will even further reduce their numbers. However, the issue of grading or assessing the strength of the evidence needs to be further discussed, because in the health system policy domain it is difficult to design feasible analytical studies of the type used for clinical medicine (particularly randomized controlled trials). In health systems policy interventions the context in which a policy is designed and implemented varies from country to country and even –within the same country – from region to region or between different time periods. In recognition of this context-specificity when considering health systems interventions, there has been a growing interest recently in the use of “realist reviews” to better understand and interpret the evidence on health systems interventions, whose effectiveness and impact depend very much on the context in which they are designed and implemented (Pawson et al, 2005). Assessing the impact of retention strategies is also difficult because of challenges in attributing the effects to the intervention or to other confounding factors.

Some of the **outcome measures** that can be used in the impact analysis of retention strategies are:

- changes over time in the ratio of health workers densities between urban and rural areas
- percentage of health professionals who choose to work in a rural or underserved community as a consequence of an intervention
- duration in service of the health workers

- number of outpatient visits at public health facilities in rural facilities before and after an intervention
- patient satisfaction with care provided by rural providers (in before and after studies) worker satisfaction
- health outcomes indicators (morbidity rates, mortality rates/in the long-run)

Gaps in country level implementation

Another finding is that often times the various schemes are proposed without a baseline study to understand the factors that influence health workers' decisions. Sustainability is an issue, as many interventions start as pilot experiments in a region or district, with little capacity for scaling up or for even sustaining the interventions for a longer term.

6) Research questions and concluding remarks

Interventions to improve retention need to consider the local situation and context. A baseline analysis of factors influencing workers choices and preferences for location should inform the development of retention strategies for rural and remote areas.

Single interventions may not work, as the underlying factors are complex, so the interventions will need to address the complexity of these factors.

Monitoring and evaluation measures should be built in the strategy from the very start of the programme. Cost analysis should also be part of these regular evaluations.

Intersectoral collaboration is key in this area, where changes in practice and regulation would require interventions from other sectors, such as labour, finance, local development, education etc.

The initial rapid review of the literature has shown that some of the critical questions for which research has not yet provided clear answers are as follows:

1. What is the role of different factors in influencing where health workers' choices of location and how best can they be identified?
2. How do these factors vary by cadre of health worker and by gender?
3. How effective are different interventions in influencing health worker location?
4. How should effective retention interventions be designed and implemented to improve staffing of rural health facilities?
5. What regulatory frameworks need to be in place for the design and implementation of retention packages (such as for example salary increases, producing different types of health workers, or compulsory service requirement)?
6. How can the impact of retention strategies be measured and evaluated?

For the discussions of the expert group:

1. Agree upon whether the categories of strategies proposed in this paper should be that upon which the recommendations are built. Consider whether other types of strategies (such as for example, different models of service delivery, including contracting and public-private partnerships) should be considered by this group, as these strategies have as final outcome an increased access to health services in remote and rural areas
2. Agree on the types of health workers for which the recommendations will be developed
3. Identify and agree upon a common research framework for evaluating the effectiveness of interventions
4. Identify the research gaps and programme to fill the gaps
5. Examine specifically the aspects related to challenges for country level implementation

7) Annexes

Box 1. OECD definition for rural areas

The OECD has recently developed a simple definition of rural areas for the purpose of making international comparisons of rural conditions and trends, which has proved useful despite the great differences in rural problems, perspectives and policies at national level. The definition distinguishes two hierarchical levels of territorial unit: local and regional. At local community level (NUTS 5), the OECD identifies rural areas as communities with a population density below 150 inhabitants per square kilometer. At regional level (mainly NUTS 3), the OECD distinguishes larger functional or administrative units by their degree of rurality, depending on what share of the region's population lives in rural communities. To facilitate analysis, regions are then grouped into three types:

1. **predominantly rural regions:** over 50% of the population living in rural communities;
2. **significantly rural regions:** 15 to 50% of the population living in rural communities;
3. **predominantly urban regions:** less than 15% of the population living in rural communities.

The Eurostat approach is based on the degree of urbanisation. An algorithm was developed to classify every European region according to one of three classes:

1. **Densely populated zones:** these are groups of contiguous municipalities, each with a population density superior to 500 inhabitants/km², and a total population for the zone of at least 50,000 inhabitants.
2. **Intermediate zones:** these are groups of municipalities, each with a density superior to 100 inhabitants/km², not belonging to a densely populated zone. The zone's total population must be at least 50,000 inhabitants, or it must be adjacent to a densely populated zone.
3. **Sparsely populated zones:** these are groups of municipalities not classified as either densely populated or intermediate.

(Source: A TYPOLOGY OF RURAL AREAS IN EUROPE. INDICATORS ON STRENGTH AND WEAKNESS OF RURAL TERRITORIES AND SELECTION OF AREAS (NUTS III) Milan, November 1999. Available at: <http://www.nordregio.se/spespn/Files/2.3.ruralareas.pdf>)

Box 2. Methodology for the literature review on increasing access to health workers in remote and rural areas

The literature review searched for papers published **between 1995 and September 2008**. The **search terms** used were: *Retention, retention strategies / retention strategy, retention scheme, staff retention, financial incentive, monetary incentive, non-financial incentive, non-monetary incentive, bonding scheme, compulsory service, rural AND retention, remote AND retention, remote area, rural area, allowance AND rural, allowance AND remote, recruitment AND rural, recruitment AND remote, rural / urban balance, maldistribution, distribution, absenteeism, salary, rural AND access, remote AND access, vacancy rates, benefits, motivation, patient satisfaction, utilization of services, medicalisation*. Each of these terms were searched independently and then searched with the addition of: *Health worker, health professional, human resources for health, nurse, doctor, physician, midwife, health workforce*.

The **databases** searched included: PUBMED, EMBASE, MEDLINE, Cochrane library, the WHO database, WHOLIS. Many journals were involved in our search, although particular attention was given to those focusing primarily upon rural health matters and human resource issues. These included *Australian Journal of Rural Health, Rural and Remote Health, Human Resources for Health* and *the Canadian Journal of Rural Medicine*. Once our search strategy had been developed, we also made use of several organisational and NGO data sources addressing retention strategies such as *EQUINET*, Capacity Project and *Santé Sud*.

Over 500 papers were initially considered, with 245 eventually included in the database. We identified 55 studies that either described a rural imbalance problem or identified factors influencing choices of location and practice in remote and rural areas, covering 30 countries. We also identified 48 studies that either described or evaluated an intervention to improve retention in rural areas, covering 19 countries. Of these, only 31 studies presented some sort of evaluation, and these covered 15 out of the 19 countries mentioned before.

The **selection criteria** for the articles that were kept in the final database were: studies discussing health worker retention issues in rural or remote areas with regards to doctors, nurses or midwives, studies that looked at factors that influence choices for location and practice in rural and remote areas, and studies that either described or evaluated an intervention aimed at improving retention in these areas.

Exclusion criteria: urban slums, conflict and post-conflicts, village health workers and community health workers. We did not include in the final database studies that looked at various models of service delivery to improve access to health services in remote and rural areas, such as contracting, private-public partnerships.

Efforts were also made to identify non-published reports in English, French, Spanish, Portuguese, Chinese and Russian. However, little was found in the regions of Eastern-Mediterranean, China, Russia and Latin America.

Quality of the evidence was assessed according to the Grading of Recommendations Assessment, Development and Evaluation (GRADE) approach. Although this approach is more commonly associated with clinical guidelines, it can be equally relevant when developing recommendations for health systems. The GRADE approach identifies four levels of evidence quality which have been adopted for the methodology of our literature review.

- **High quality:** further research is very unlikely to change our confidence in the estimated effect
- **Moderate quality:** further research is likely to have an important impact on our confidence in the estimate of effect and may change the estimate
- **Low quality:** further research is very likely to have an important impact on our confidence in the estimate of effect and is likely to change the estimate
- **Very low quality:** an estimate of effect is very uncertain

The quality of the evidence depends heavily upon the study design. For example, although observational studies start with a 'low quality' rating, grading upwards may be warranted if the magnitude of the intervention effect is very large. Quality of evidence may be downgraded due to limitations in study design such as imprecise estimates, bias, use of indirect evidence or variability of results (Source: GRADE: an emerging consensus on rating quality of evidence and strength of recommendations, 2008).

References

1. Abrahams, J.F & Lefi, M.M, 2007, 'Implementing telemedicine in South Africa 'A South African Experience'', International Hospital Federation Reference Book 2006/2007, Available at <http://www.ihf-fih.org/pdf/69-71.pdf>
2. Abzalova, R., Wickham, C., Chukmaitov, A. & Rakhimbekov, T., 1998, 'Reform of primary health care in Kazakhstan and the effects on primary health care worker motivation: The case of Zhezkazgan Region', Major Applied Research 5, Working Paper 3, Partnerships for Health Reform, Maryland
3. Adams, E. & Kennedy, A., 2006, 'Positive Practice Environments: Key considerations for the development of a framework to support the integration of international nurses', International Centre on nurse migration, Available at http://www.intlnursemigration.org/download/ICNM_Pos_Practice_Env.pdf
4. Adams, O. & Hicks, V., 2000, 'Pay and non-pay incentives, performance and motivation', *Prepared for WHO's December 2000 Global Health workforce strategy group*, Geneva
5. Anderson, F.W., Mutchnick, I., Kwawukume, E.Y., Danso, K.A., Klufio, C.A., Clinton, Y., Yun, L.L. & Johnson, T.R., 2007, 'Who will be there when women deliver? Assuring retention of obstetric providers', *Obstetrics and gynecology*, vol.110, no.5, pp.1012-1016.
6. Antwi, J. 2006, 'Deprived area incentive scheme', (presentation part of the ECSA workforce observatory meeting Arusha, Tanzania, 26th-29th September 2006), Available at <http://www.hrhresourcecenter.org/node/993>
7. Association Santé Sud & Association des Médecins de Campagne de Mail, 1998, 'L'expérience des médecins de campagne de Mail', L'Association des Médecins de Campagne du Mail, Mali
8. Australian Government Department of Health and Ageing, Budget 2000-2001, *More Doctors, Better Services*, Regional Health Strategy, Available at [http://www.health.gov.au/internet/main/publishing.nsf/Content/health-budget2000-ruralcov.htm/\\$FILE/rural.pdf](http://www.health.gov.au/internet/main/publishing.nsf/Content/health-budget2000-ruralcov.htm/$FILE/rural.pdf)
9. Australian Government Medicare Australia, 2008, Rural Retention Program, Available at <http://www.medicareaustralia.gov.au/about/whatwedo/other/rural.jsp>
10. Azambuja, E. P., Fernandes, G. F. M., Kerber, N. P. C., da Silveira, R. S., da Silva, A. L., Takase Gonçalves, L. H. and Cartana, 2007, 'Significados do trabalho no processo de viver de trabalhadoras de um programa de saúde da família', *Texto Contexto Enferm*, Florianópolis, Jan-Mar; 16(1): 71-9.
11. Bachilli, R.G., Scavassa, A.J. & Spiri, W.C., 2008, 'A identidade do agente comunitario de saúde: uma abordagem fenomenologica', *Ciencia & Saude Coletiva*, vol.13, no.1, pp.51-60
12. Battye, K.M. & McTaggart, K. 2003, 'Development of a model for sustainable delivery of outreach allied health services to remote North-West Queensland, Australia', *Rural and Remote Health*, no.194, pp.1-14.
13. Baumann, A., 2007, 'Positive practice environments: Quality workplaces = quality patient care information and action tool kit', International Council of Nurses, Geneva, Available at <http://www.icn.ch/indkit2007.pdf>
14. Baumann, A., Yan, J., Degelder, J. & Malikov, K. 2006, 'Retention strategies for nursing: A profile of four countries', Nursing Health Services Research Unit, Human Health Resource Series Number 5, Available at <http://www.nhsru.com/documents/Series%205%20Retention%20Report.pdf>
15. BCMA Rural Issues Committee, 1998, 'Attracting and retaining physicians in rural British Columbia', http://www.bcma.org/public/news_publications/publications/policy_papers/AttractingRetaining/RuralPhysicianRetention.pdf
16. Biemba, G. & Sichinga K. 2007, 'CHAZ response to the human resource crisis in Zambia', (presentation made at Christian Health Associations Conference, Dar es Salaam 16-18 Jan 2007)
17. Boni, P., 2005, 'Monitoring and evaluating human resources for health incentive reforms in Ghana', Ministry of Health, Available at www.moh-

ghana.org/.../health_summit05/presentations/DeprivedAreaPresentation%20byMr%20Prince%20Boni.ppt

18. Borgueil, Y., Mousquès, J. & Tajahmadi, A., 2006, 'Comment améliorer la répartition géographique des professionnels de santé? Les enseignements de la littérature internationale et des mesures adoptées en France', Instiut de recherche et documentation en économie de la santé, Paris
19. Buchan, J. & Evans, D. 2007, 'Realising the benefits? Assessing the implementation of agenda for change', King's Fund, London
20. Buchan, J. & McCaffery, J. 2007, 'Health workforce innovations: A synthesis of four promising practices', *Capacity project*, Available at <http://www.capacityproject.org/images/stories/files/synthesis.pdf>
21. Buchan, J., Thompson, M. & O'May, F., 2000, 'Health workforce incentive and remuneration - A research review', in *Issues in health services delivery*, Discussion Paper no.5, Economic and policy incentives, WHO, Geneva
22. Buikstra, E., Eley, R.M. & Hindmarsh, N. 2007, 'Informing rural and remote students about careers in health: Factors influencing career decisions', *Australian Journal of Rural Health*, vol. 15, pp.289-295.
23. Butterworth, K., Hayes, B. & Neupane, B. 2008, 'Retention of general practitioners in rural Nepal: A qualitative study', *Australian Journal of Rural Health*, vol.16, pp.201-206.
24. Caffrey, M. & Frelick, G. 2006, 'Health workforce 'Innovative approaches and promising practices' study: Attracting and retaining nurse tutors in Malawi', *Capacity Project, USAID*, Available at http://www.capacityproject.org/images/stories/files/promising_practices_malawi.pdf
25. Capacity Project, 2007, 'Improving retention: Nurse tutors in Malawi', The Capacity Project, Intrahealth International Inc, USAID
26. Cavender, A. & Alban, M., 1998, 'Compulsory medical service in Ecuador: The Physician's perspective', *Social Science and Medicine*, vol.47, no.12, pp.1937-1946.
27. Central Board of Health Zambia, 'Expansion of the ZHWRS to other cadres', Accessed 04.08.2008, Available at <http://www.cboh.gov.zm/documents/EXPANSION.pdf>
28. Central Board of Health Zambia, 'Retention Scheme', Accessed 04.08.2008, Available at http://www.cboh.gov.zm/?file=show_doc.html&id=2979&setLang=uk
29. Chen, L., Evans, T., Anand, S., Boufford, J., Brown, H., Chowdhury, M., Cueto, M., Dare, L., Dussault, G., Elzinga, G., Fee, E., Habte, D., Hanvoravongchai, P., Jacobs, M., Kurowski, C., Michael, S., Pablos-Mendez, A., Sewankambo, N., Solimano, G., Stilwell, B., de Waal, A. & Wibulpolprasert, S., 2004, 'Human resources for health: overcoming the crisis', *The Lancet*, vol.364, pp.1984-1990
30. Chimbari, M.J., Madhina, D., Nyamangara, F., Mtandwa, H. & Damba, V., 'An assessment of the Zimbabwe government strategy for retention of health professionals', (poster developed for *Equinet*), Available at www.equinet africa.org/bibl/docs/PosterHRChimbari0308.pdf
31. Chomitz, K.M., Setiadi, G., Azwar, A., Ismail, N. & Widiyarti 1998, 'What do doctors want? Developing incentives for doctors to serve in Indonesia's rural and remote areas', The World Bank Policy Research Working Paper 1888, Available at <http://www.worldbank.org/html/dec/Publications/Workpapers/WPS1800series/wps1888/wps1888.pdf>
32. Christian Social Services Commission (CSSC) Tanzania, 2006, 'Development of a motivation package for rural health workers in voluntary agencies (VA) owned hospitals', Final draft, Available at http://207.58.190.251/hrh/doc.php?doc_id=121&action=inline
33. Como del Corral, M.J., Luquin, P.A., Guevara, J.C., Movilla, A.O., Torres, G.T. & Garcia, J.L., 2005, 'Utility of a thematic network in primary health care: a controlled interventional study in a rural area.', *Human Resources for Health*, vol.3, no.4, pp.1-7
34. Corkey, J., 1999, 'Public service reforms and their impact on health sector personnel in Uganda', WHO and ILO joint publication, Geneva, Switzerland
35. Cosgrove, E.M., Harrison, G.L., Kalishman, S., Kersting, K.E., Romero-Leggott, V., Timm, C., Velarde, L.A. & Roth, P.B., 2007, 'Addressing physician shortages in New Mexico through a combined BA/MD program', *Academic medicine*, vol.82, no.12, pp.1152-1157.

36. Coulibaly, S., Desplat, D., Kone, Y., Minaga, K., Dugas, S., Farnarier, G., Sy, M., Balique, H., Doumbo, O.K., Van Dormael, 2007, 'Une médecine rurale de proximité: l'expérience des médecins de campagne au Mali', *Education for Health*, vol.20, no.2, pp.1-
37. Curran, V.R., Fleet, L., Pong, R.W., Bornstein, S., Jong, M., Strasser, R.P. & Tesson, G., 2007, 'A survey of rural medical education strategies throughout the medical education continuum in Canada', *Cahiers de sociologie et de démographie médicales*, vol.47, no.4, pp.445-468
38. Dambisya, Y.M 2007, 'A review of non-financial incentives for health worker retention in east and souther Africa', *Equinet Discussion Paper Number 44*, Available at <http://www.equinet africa.org/bibl/docs/DIS44HRdambisya.pdf>
39. De Gieter, S., De Cooman, R., Pepermans, R., Caers, R., Du Bois, C. & Jegers, M., 2006, 'Identifying nurses' rewards: A qualitative categorisation study in Belgium', *Human Resources for Health*, vol.4, no.15, pp.1-15.
40. Desai, S., 'Expanding emergency obstetric care', Federation of Obstetric and Gynaecological Societies of India, India
41. Desplats, D., Koné, Y. & Razakarison, C., 2004, 'Pour une médecine générale communautaire en première ligne', *Médecine Tropicale*, vol.64, no.6, pp.539-544.
42. Dieleman, M. & Harnmeijer, J.W., 2006, 'Improving health worker performance: in search of promising practices', WHO, Geneva, Available at http://www.who.int/hrh/resources/improving_hw_performance.pdf
43. Direction régionale des affaires sanitaires et sociales d'île-de-France & ARH, 2008, 'Attractivité et fidélisation des professionnels paramédicaux dans les structures sanitaires et medico-sociales', Available at http://ile-de-france.sante.gouv.fr/img/pdf/attractivite_fidelisation_pro_paramed.pdf
44. Dorward, J., 2007, 'Cuban doctrs in Bolivia: Help or Hindrance?', The Lancet Student, Available at <http://www.thelancetstudent.com/2007/12/13/cuban-doctors-in-bolivia-help-or-hindrance/>
45. Dr Doc Program Activities (leaflet), Sydney, Rural Doctors Workforce Agency, Available at http://www.ruraldoc.com.au/xinha/plugins/ExtendedFileManager/documents/Personal_Support/DrDOCProgramActivities.pdf
46. Duplantie, J., Gagnon, M-P., Fortin, J-P. & Landry, R, 2007, 'Telehealth and the recruitment and retention of physicians in rural and remote regions: a delphi study', *Canadian Journal of Rural Medicine*, vol.12, bo.1, pp.30-36.
47. Dussault, G. & Franceschini, M.C., 2006, 'Not enough there, too many here: understanding geographical imbalances in the distribution of the health workforce', *Human Resources for Health*, vol.4, no.12, pp.1-16.
48. Eley, D., Young, L., Shrapnel, M., Wilkinson, D., Baker, P. & Hegney, D. 2007, 'Medical students and rural general practitioners: Congruent views on the reality of recruitment into rural medicine', *Australian Journal of Rural Health*, vol.15, pp.12-20
49. El-Jardali, F., Jamal, D., Jaafar, M. & Rahal, Z., 2008, 'Analysis of health professionals migration: A two-country case study for the United Arab Emirates and Lebanon', WHO, Geneva, **forthcoming**
50. Fooks, C. & Maslove, L., 2004, 'Health human resources policy initiatives for physicians, nurses and pharmacists', Canadian policy research networks, Available at http://www.cprn.com/documents/32547_en.pdf#search=%22Health%20Human%20Resources%3A%20Policy%20Initiatives%20for%20Physicians%2C%20Nurses%20and%20Pharmacists%20%22
51. Fournier, M-A., Contandriopoulos, A-P., Diene, C.P. & Trottier, L-H., 2004, 'Mesures d'attraction et de rétention des médecins en région éloignée: politiques adoptées dans les provinces canadiennes er dans certains pays et leçons à tirer pour le Québec', Groupe de recherche interdisciplinaire en santé (GRIS), Faculté de médecine, Université de Montréal
52. Frank, C., Seguin, R., Haber, S., Godwin, M. & Stewart, G.I. 2006, 'Medical directors of long-term care facilities: Preventing another physician shortage?', *Canadian family physician*, vol.52, pp.753-758
53. FOM Scholarship Scheme, Available at <http://www.fomscholarship.org.za/default.asp?id=1044>

54. Frontiers, 2007, 'South Africa: Improve facility management to increase nurse retention', Population Council, OR Summary no.63, Available at <http://www.popcouncil.org/frontiers/orsummaries/ors63.html>
55. Gagnon, M-P., Duplantie, J., Fortin, J-P. & Landry, R. 2006, 'Exploring the effects of telehealth on medical human resources supply: a qualitative case study in remote regions', *BMC Health Services Research*, vol.7, no.6, pp.1-9
56. Gagnon, M-P., Duplantie, J., Fortin, J-P. & Landry, R., 2007, 'Implementing telehealth to support medical practice in rural/remote regions: what are the conditions for success?', *Implementation science*, vol.1, no.18, pp.1-8.
57. Gardiner, M., Sexton, R., Durbridge, M. & Garrard, K. 2005, 'The role of psychological well-being in retaining rural general practitioners', *Australian Journal of Rural Health*, vol.13, pp.149-155.
58. Gardiner, M., Sexton, R., Kearns, H. & Marshall, K. 2006, 'Impact of support initiatives in retaining rural general practitioners', *Australian Journal of Rural Health*, vol.14, pp.196-201.
59. Gasco, M., Hedgecock, D. & Wright, C., 'Romania. Reaching the poor: Scaling up integrated family planning services', John Snow, Inc., Boston
60. Gibbon, P. & Hales, J., 2006, 'Review of the Rural Retention Program - Final report', Australian Government Department of Health and Ageing, Available at [http://www.health.gov.au/internet/main/publishing.nsf/Content/751B9B296D05A4C8CA25741E0079E487/\\$File/review.pdf](http://www.health.gov.au/internet/main/publishing.nsf/Content/751B9B296D05A4C8CA25741E0079E487/$File/review.pdf)
61. Gilson, L. & Erasmus, E., 2005, 'Supporting the retention of health resources for health: SADC policy context', Regional Network for Equity in Health in Southern Africa (EQUINET), Available at <http://www.equinetafrica.org/bibl/docs/DIS37HRes.pdf>
62. Guyatt, G.H., Oxman, A.D., Vist, G.E., Kunz, R., Falck-Ytter, Y., Alonso-Coello, P., Schünemann, H.J., 2008, 'GRADE: an emerging consensus on rating quality of evidence and strength of recommendations', *British Medical Journal*, vol.336, pp.924-926.
63. Guyatt, G.H., Oxman, A.D., Vist, G.E., Kunz, R., Falck-Ytter, Y., Alonso-Coello, P., Schünemann, H.J., 2008, 'What is 'quality of evidence' and why is it important to clinicians?' *British Medical Journal*, vol.336, pp.995-998.
64. Hammer, J. & Jack, W., 2002, 'Designing incentives for rural health care providers in developing countries', *Journal of development economics*, vol.69, no.1, pp.297-303.
65. Harding, A., Whitehead, P., Aslani, P. & Chen, T. 2006, 'Factors affecting the recruitment and retention of pharmacists to practice sites in rural and remote areas of New South Wales: A qualitative study', *Australian Journal of Rural Health*, vol.14, pp.214-218.
66. Hemphill, E., Dunn, S., Barich, H. & Infante, R. 2007, 'Recruitment and retention of rural general practitioners: A marketing approach reveals new possibilities', *Australian Journal of Rural Health*, vol. 15, pp. 360-367
67. Henderson, L.N. & Tulloch, J., 'Review: Incentives for retaining and motivating health workers in Pacific and Asian countries', Australian Agency for International Development, Canberra
68. Henry, L.R. & Hooker, R.S., 2007, 'Retention of physician assistants in rural health clinics', *Journal of Rural Health*, vol.23, no.3, pp.207-201
69. Hicks, V. & Adams, O., 2000, 'The effects of economic and policy incentives on provider practice', in *Issues in health services delivery*, Discussion Paper no.5, Economic and policy incentives, WHO, Geneva
70. Hill, D., Martin, I. & Farry, P. 2002, 'What would attract general practice trainees into rural practice in New Zealand?', *The New Zealand Medical Journal*, vol.115, no.1161, pp.1-9
71. Hongoro, C. & Normand, C., 2006, 'Health Workers: Building and Motivating the Workforce.' in *Disease Control Priorities in Developing Countries* (2nd Edition), pp.1,309-1,322. New York, Oxford University Press
72. Hu, J., 2004, 'Job satisfaction among nurses in China', *Home health care management & practice*, vol.17, no.1, pp.9-13.
73. Human Resources for Health Unit, Health Systems Strengthening Area, 2006, 'Human Resources trends in the Americas: Evidence for action', Pan American Health Organisation, Available at http://www.observatoriorh.org/Lima/docs/HRHA%20Strengthening%20_eng.pdf
74. Humphreys, J.S & Rolley, F. 1998, 'A modified framework for rural general practice: The importance of recruitment and retention', *Social Science Medicine*, vol.46, no.8, pp.939-945.

75. International Council of Nurses et al, 2008, 'Guidelines: Incentives for health professionals', Available at http://www.who.int/workforcealliance/documents/Incentives_Guidelines%20EN.pdf
76. Janes, R. & London, M. 2001, 'Rural general practitioners in New Zealand: November 1999 census', *New Zealand family physician*, vol.28, pp.244-249.
77. Janes, R. & Dowell, A. 2004, 'New Zealand rural general practitioners 1999 survey - Part 3: rural general practitioners speak out', *The New Zealand Medical Journal*, vol.117, no.1191, pp.1-9
78. Johnson, C.A. & Johnson, B.E., 2008, 'Family medicine practice in rural any-country', *International family medicine education*, vol.40, no.1, pp.55-56
79. Jones, C.B. & Gates, M., 2007, 'The costs and benefits of nurse turnover: A business case for nurse retention', *The Online Journal for issues of nursing*, vol.12, no.13
80. Jones, J.A., Humphreys, J.S. & Adena, M.A. 2004, 'Rural GP's ratings of initiatives designed to improve rural medical workforce recruitment and retention', *Rural and Remote Health*, no.314, pp.1-10
81. Jong, M., 2008, 'President's message. Recognising the expertise in rural and remote medicine', *Canadian Journal of Rural Medicine*, vol.13, no.2, pp.60.
82. Kanyesigye, E.K. & Ssendyona, G.M., 2004, 'Payment of lunch allowance: A case study of the Uganda health service', A joint learning initiative: Human resources for health and development, Available at http://www.rcn.org.uk/_data/assets/pdf_file/0011/78527/001595.pdf
83. Kaushik, M., Jaiswal, A., Shah, N. & Mahal, A., 2008, 'High-end physician migration from India', *Bulletin of the World Health Organisation*, vol.86, pp.40-45
84. Kavallaris, M., Meachem, S.J., Hulett, M.D., West, C.M., Pitt, R.E., Chesters, J.J, Laffan, W.S., Boreham, P.R. & Khachigian, L.M. 2008, 'Perceptions in health and medical research careers: the Australian Society for Medical Research Workforce Survey', *The Medical Journal of Australia*, vol.188, no.9, pp.520-524
85. Keahy, S., 2008, 'Against the odds: orienting and retaining rural nurses', *Journal of Nurses Staff Development*, vol.24, no.2, pp.15-20
86. Kearns, R., Myers, J., Adair, V., Coster, H. & Coster, G. 2006, 'What makes 'place' attractive to overseas-trained doctors in rural New Zealand?', *Health and Social Care in the Community*, vol.14, no.6, pp.
87. Keni, B.H., 2006, 'Training competent and effective primary health care workers to fill a void in the outer islands health service delivery of the Marshall Islands of Micronesia', *Human resources for health*, vol.4, no.27, pp.1-8.
88. Kim, C., 2000, 'Recruitment and retention in the Navajo area Indian health service', *Western Journal of Medicine*, vol.173, pp.240-243
89. Kingma, M., 2003, 'Economic incentive in community nursing: attraction, rejection, or indifference?', *Human Resources for Health*, vol.1, no.2, pp.1-12.
90. Koot, J. & Martineau, T., 2005, 'Zambian Health workers retention scheme (ZHWS) 2003-2004: Mid term review', Available at http://www.hrhresourcecenter.org/hosted_docs/Zambian_Health_Workers_Retention_Scheme.pdf
91. Krogstad, U., Hofoss, D., Veenstra, M. & Hjortdahl, P., 2006, 'Predictors of job satisfaction among doctors, nurses and auxiliaries in Norwegian hospitals: relevance for micro unit culture', *Human Resources for Health*, vol.4, no.3, pp.1-8
92. Lehmann, U., Dieleman, M. & Martineau, T. 2008, 'Staffing remote rural areas in middle- and low-income countries: A literature review of attraction and retention', *BMC Health Services Research*, vol.8, no.19, pp.1-10
93. Ipinge, S.N., Hofnie, K., van der Westhuizen, L. & Pendukeni, M. 2006, 'Perceptions of health workers about conditions of service: A Namibian case study', Equinet Discussion Paper Number 35, Available at <http://www.equinet africa.org/bibl/docs/DIS35HRiipinge.pdf>
94. London, M. 2002, 'Incentives for rural practice', *The New Zealand Medical Journal*, vol.115, no.1161, pp.1-3.

95. Lyle, D., Klineberg, I., Taylor, S., Jolly, N., Fuller, J. & Canalese, J. 2007, 'Harnessing a University to address rural health workforce shortages in Australia', *Australian Journal of Rural Health*, vol.15, pp.227-233.
96. Mabud, M.A., 2005, 'Demographic implications for health human resources for Bangladesh', Centre for Health, Population and Development, Independent University, Bangladesh
97. Maezawa, M., 'Primary care and long-term care in rural areas', Available at http://www.mansfieldfdn.org/programs/program_pdfs/maezawa.pdf
98. Makowiecka, K., Achadi, E., Izati, Y. & Ronsmans, C., 2008, 'Midwifery provision in two districts in Indonesia: how well are rural areas served?', *Health Policy and Planning*, vol.23, pp.67-75
99. Mamoudou, T., 2007, 'Surproduction des médecins au Mali: une opportunité pour renforcer la première ligne', 43^{ème} Master en Santé Publique en Politiques et Management des Systèmes de Santé, Institut de Médecine Tropicale Prince Léopold
100. Mangham, L. 2007, 'Addressing the human resource crisis in Malawi's health sector: Employment preferences of public sector registered nurses', *ESAU Working Paper 18, Overseas Development Institute, London*
101. Martineau, T., Decker, K. & Bundred, P., 2004, "'Brain drain" of health professionals: from rhetoric to responsible action', *Health policy*, vol.70, pp.1-10
102. Martineau, T., Lehmann, U., Matwa, P., Kathyola, J. & Storey, K., 2006, 'Factors affecting retention of different groups of rural health workers in Malawi and Eastern Cape Province, South Africa', Available at http://207.58.190.251/hrh/doc.php?doc_id=137&action=inline
103. Mathauer, I. & Imhoff, I., 2006, 'Health worker motivation in Africa: the role of non-financial incentives and human resource management tools', *Human Resources for Health*, vol.4, no.24, pp.1-17.
104. Mathews, M., Rourke, J.T.B. & Park, A., 2008, 'The contribution of Memorial University's medical school to rural physician supply', *Canadian Journal of Rural Medicine*, vol.13, no.1, pp.15-21
105. Matsumoto, M., Inoue, K. & Kajii, E. 2008, 'Long-term effect of the home preference recruiting scheme of Jichi Medical University, Japan', *Rural and Remote Health*, vol.8, no.920, pp.1-15
106. Matsumoto, M., Okayama, M. & Kajii, E. 2004, 'Rural doctors' satisfaction in Japan: A nationwide survey', *Australian Journal of Rural Health*, vol.12, pp.40-48
107. Matsumoto, M., Okayama, M., Inoue, K. & Kajii, E. 2005, 'Factors associated with rural doctors' intention to continue a rural career: A survey of 3072 doctors in Japan', *Australian Journal of Rural Health*, vol.13, pp.219-225.
108. McCoy, D., Bennett, S., Witter, S., Pond, B., Baker, B., Gow, J., Chand, S., Ensor, T. & McPake, B., 'Salaries and incomes of health workers in Sub-Saharan Africa', *The Lancet*, vol.371, pp.675-681.
109. Mhango, D. 2006, 'Innovative recruitment and retention strategies' (presentation made at Global Health Council, Washington DC 31st May 2006)
110. Ministry of Health, New Zealand, 2006, 'Health workforce development: An overview', Ministry of Health, Wellington, Available at [http://www.moh.govt.nz/moh.nsf/0/00D7472E7FD12281CC2571460082943E/\\$File/Health-Workforce-Dev.pdf](http://www.moh.govt.nz/moh.nsf/0/00D7472E7FD12281CC2571460082943E/$File/Health-Workforce-Dev.pdf)
111. Ministry of Health, The Republic of Uganda, 2007, 'Uganda health workforce study: Satisfaction and intent to stay among current health workers', *The Capacity Project*, Available at http://www.intrahealth.org/assets/uploaded/resources/exec_sum_retention_study_final.pdf
112. Morris, C.G., Johnson, B., Kim, S. & Chen, F., 2008, 'Training family physicians in community health centers: a health workforce solution', *Family Medicine*, vol.40, no.4, pp.271-276
113. Mosovice, I. & Rosenblatt, R., 1979, 'The viability of mid-level practitioners in isolated rural communities', *American Journal of Public Health*, vol.69, no.5, pp.503-505
114. Munga MA, Mbilinyi DR (2008) 'Non-financial incentives and retention of health workers in Tanzania: Combined evidence from literature review and a focussed cross-sectional study,' EQUINET Discussion Paper Series 61.

115. Muula, A.S. & Maseko, F.C. 2005, 'Survival and retention strategies for Malawian health professionals', *Equinet Discussion Paper Number 32*, Available at <http://www.equinet africa.org/bibl/docs/DIS32HRmuula.pdf>
116. Mwale, H.F. & Smith, S., 'Human Resources Retention Scheme: Qualitative and Quantitative Experience from Zambia', Accessed 31.07.2008, Available at http://www.who.int/workforcealliance/forum/presentations/Hilary_Francis.pdf
117. National Association of Community Health Centres, The George Washington School of Public Health and Health Services & The Robert Graham Centre, 2008, 'Access transformed: Building a primary care workforce for the 21st century', USA
118. Ndeti DM, Khasakhala L, Omolo JO (2008) 'Incentives for health worker retention in Kenya: An assessment of current practice,' EQUINET Discussion Paper Series 62.
119. Nestman, N.A., 1998, 'The retention of physicians in rural areas: The case of Nova Scotia', *Industrial Relations Centre, Queen's University, Canada*
120. Ngoc, N.B., Lien, N.B & Huong, N.L. 'Human resource for health in Vietnam and mobilisation of medical doctors to commune health centers', Asia-Pacific Action Alliance on Human Resources for Health, Available at http://www.aaahrh.org/reviewal/1166639983_Vietnam%20-%20Revised.pdf
121. Noree, T., Chokchaichan, H. & Mongkolporn, V. 2005, 'Abundant for the few, shortage for the majority: The inequitable distribution of doctors in Thailand', *International Health Policy Program*, Available at http://www.aaahrh.org/reviewal/1166639104_Thailand%20-%20Revised.pdf
122. O'Connor, T.M. & Hooker, R.S 2007, 'Extending rural and remote medicine with a new type of health worker: Physician assistants', *Australian Journal of Rural Health*, vol.15, pp.346-351.
123. Omole, O.B., Marincowitz, G. & Ogunbanjo, G.A., 2005, TITLE?? *South African family practice*, vol.47, no.6, pp.55-59
124. Summaries, 2007, 'Improve facility management to increase nurse retention', OR Summary 63, *Frontiers in reproductive health*, Available at http://pdf.usaid.gov/pdf_docs/PNADJ449.pdf
125. Ozolins, I.Z., Greenwood, G. & Beilby, J. 2004, 'Keeping woman doctors in the country', *Rural and Remote Health*, no.268, pp.1-9
126. Paleologou, V., Kontodimopoulos, N., Stamouli, A., Aletras, V. & Niakas, D., 2006, 'Developing and testing an instrument for identifying performance incentives in the Greek health care sector', vol.6, no. 118, pp.1-10
127. Palmer, D. 2006, 'Tackling Malawi's Human Resources Crisis', *Reproductive Health Matters*, vol.14, no.27, pp.27-39
128. Pendry, P.S., 2007, 'Moral distress: recognising it to retain nurses', *Nursing economics*, vol.25, no.4, pp.217-221.
129. Perkins, D., Larsen, K., Lyle, D. & Burns, P. 2007, 'Securing and retaining a mental health workforce in Far Western New South Wales', *Australian Journal of Rural Health*, vol.15, pp.94-98.
130. Perry, S., 2006, Preliminary retention strategy review: Ghana (Draft)', Capacity Project, Available at http://207.58.190.251/hrh/doc.php?doc_id=232&action=inline
131. Perry, H., Robinson, N., Chavez, D., Taja, O., Hilari, C., Shanklin, D. & Wyon, J., 1999, 'Attaining health for all through community partnerships: principles of the census-based, impact-orientated (CBIO) approach to primary health care developed in Bolivia, South America', *Social Science & Medicine*, vol.48, pp.1053-1067
132. Phomtavong, S., Akkhavong, K. & Xaisida, S., 2005, 'Strengthening the quality of human resources for health orientated toward the district and village levels in Lao People's Democratic Republic', Ministry of Health, National Institute of Public Health, Laos
133. Physicians for Human Rights, 2006, 'Bold solutions to Africa's health worker shortage', Available at <http://physiciansforhumanrights.org/library/documents/reports/report-boldsolutions-2006.pdf>
134. Polasek, O., Kolcic, I., Dzakula, A. & Bagat, M., 2006, 'Internship workplace preferences of final-year medical students at Zagreb University Medical School, Croatia: all roads lead to Zagreb', *Human resources for health*, vol.4, no.7, pp.1-5

135. Public Health & Welfare Sectoral Bargaining Council, 2004, 'Revised non-pensionable recruitment allowance, referred to as 'the rural allowance'', Resolution No.2 of 2004, Available at http://www.doh.gov.za/docs/misc/resolution2_2004.pdf
136. Rabinowitz, H.K. 1993, 'Recruitment, retention, and follow-up of graduates of a program to increase the number of family physicians in rural and underserved areas', *The New England Journal of Medicine*, vol.328, no.13, pp.934-939.
137. Rabinowitz, H.K., Diamond, J.J. Markham, F.W. & Hazelwood, C.E. 1999, 'A program to increase the number of family physicians in rural and underserved areas: impact after 22 years', *Journal of the American Medical Association*, vol.281, no.3, pp.255-260
138. Rabinowitz, H.K., Diamond, J.J., Markham, F.W & Paynter, N.P 2001, 'Critical factors for designing programs to increase the supply and retention of rural primary care physicians', *Journal of the American Medical Association*, vol.286, no.9, pp.1041-1048.
139. Ranjalahy-Rasolofomanana, J., Gottot, S., Randrianarivo.Solofoniaina, A.E., Rakotoarison, N. & Andrianirinarison, J.C., 'Evaluation a mi-parcours du projet Santé Sud Madagascar', Institut National de Santé Publique et Communautaire
140. Reed, G. & Torres, J. 2008, 'Training and retaining more rural doctors for South Africa', *MEDICC Review*, vol.10. no.1, pp.
141. Regional network for Equity in Health (EQUINET) 2007, 'Health worker retention and migration in east and southern Africa', Regional meeting report, Arusha, Tanzania
142. Regional network for Equity in Health (EQUINET), 2006, 'Retention and migration of health personnel in Southern Africa', Report of the regional planning meeting, Lusaka, Zambia,
143. Regional office for the Western Pacific, 2006, 'Regional strategy on human resources for health 2006-2015', WHO, Available at [http://www.moh.govt.nz/moh.nsf/0/00D7472E7FD12281CC2571460082943E/\\$File/Health-Workforce-Dev.pdf](http://www.moh.govt.nz/moh.nsf/0/00D7472E7FD12281CC2571460082943E/$File/Health-Workforce-Dev.pdf)
144. Reid, S., 2004, 'Monitoring the effect of the new rural allowance for health professionals', Research project report, Durban, Health Systems Trust, Available at http://healthlink.org.za/uploads/files/rural_allowance.pdf
145. Ronquillo, K., Elegado-Lorenzo, F.M. & Nodora, R., 2005, 'Human resources for health migration in the Philippines; A case study and policy directions', Paper for ASEAN Learning Network for Human Resources for Health, August 2-5, 2005, Bangkok, Thailand
146. Rosenblatt, R.A., Holly, C., Andrilla, A., Curtin, T. & Hart, G.L 2006, 'Shortages of medical personnel at community health centers: Implications for planned expansion', *Journal of the American Medical Association*, vol.295, no.9, pp.1042-1049.
147. Ross, A., 'Friends of Mosvold Scholarship Scheme', Part 1 and Part 2, Available at http://www.dpsa.gov.za/documents/networks/2ndAcademy/FriendsOfMosvold_Part1.pdf
148. Rural health workforce Australia, 2008, 'Audit of rural health workforce shortages', Rural Health Workforce Australia, Victoria
149. Salafsky, B. & Glasser, M. 2005, 'Addressing issues of maldistribution of health care workers', *Annals academy of medicine*, vol.34, no.8, pp.520-525
150. Sargeant, J., Allen, M. & Langille, D., 2004, 'Physician perceptions of the effect of telemedicine on rural retention and recruitment', *Journal of Telemedicine and Telecare*, vol.10, no.2, pp.89-93.
151. Scottish Executive Health Department 1990, 'Part II - Payments to practitioners providing unrestricted general medical services locum payments for isolated rural GPs', Available at http://www.sfa.scot.nhs.uk/60_1_15.htm
152. Sein, T.T., Win, M.M. & Tin, N., 'Coverage and Skill MiX Balance of Human Resources for Health in Myanmar', Available at <http://www.aaahrh.org/reviewal/Myanmar%20-%20Revised.pdf>
153. Sempowski, I.P., 2004, 'Effectiveness of financial incentives in exchange for rural and underserved area return-of-service commitments: systematic review of the literature', *Canadian Journal of rural medicine*, vol.9, no.2, pp.82-88.
154. Sheriff, R., 2005, 'Migration of human resources for health within and out of Sri Lanka - Report and Analysis 2005', Available at <http://www.aaahrh.org/reviewal/Sri%20Lanka%20All.pdf>

155. Smith, I., 1996, 'Who will benefit from Nepal's reforms?', *The Lancet, Dispatches*, vol.347, p.531
156. Smith, S., Edwards, H., Courtney, M. & Finlayson, K. 2001, 'Factors influencing student nurses in their choice of a rural clinical placement site', *Rural and Remote Health*, no.89, pp.1-7
157. Takaku, F. & Kajii, E. 2001, 'Training physicians for medical facilities in remote rural areas', (Paper presented at Mansfield Foundation conference on 'Rural health care in Japan and the United States: Shared Challenges and Solutions'), Available at http://www.mansfieldfdn.org/programs/ruralhcare_papers.htm
158. Theodorakis, P.N., Mantzavinis, G.D., Rrumbullaku, L., Lionis, C. & Trell, E., 2006, 'Measuring health inequalities in Albania: a focus on the distribution of general practitioners', *Human Resources for Health*, vol.4, no.5, pp.1-9
159. The World Health Organisation, 2001, 'Mid-level and nurse practitioners in the Pacific: Models and issues', World Health Organisation, Western Pacific Region, Manila
160. Tomblin Murphy Consulting Incorporated, 2005, 'Literature Review Report: Recruitment and retention of primary health care nurse practitioners in Canada', Canadian nurses association - canadian nurse practitioner initiative, Available at http://www.cnpi.ca/documents/pdf/HHR_Recruitment_Retention_Literature_Review_e.pdf
161. Van Diepen, K., MacRae, M. & Paterson, M. 2007, 'Use of clinical placements as a means of recruiting health care professionals to underserved areas in Southeastern Ontario: Part 2- Community perspectives', *Australian Journal of Rural Health*, vol.15, pp.29-34
162. Veitch, C. & Grant, M. 2004, 'Community involvement in medical practitioner recruitment and retention: reflections on experience', *Rural and Remote Health*, vol.4, no.261, pp.1-9
163. Villanueva, Y., Mendoza, I., Aguilar, C., Rodriguez, S., Vernon, R., 2001, 'Expansion of the role of nurse auxiliaries in the delivery of reproductive health services in Honduras', USAID, Available at http://pdf.dec.org/pdf_docs/PNACM375.pdf
164. Walters, L. & Worley, P. 2006, 'Training in rural practice: Time for integration?', *Australian Journal of Rural Health*, vol.14, pp.171-172.
165. Weymouth, S., Davey, C., Wright, J.I., Nieuwoudt, L.A., Barclay, L., Belton, S., Svenson, S. & Bowell, L. 2007, 'What are the effects of distance management on the retention of remote area nurses in Australia?', *Rural and Remote Health*, vol.7, no.652, pp.1-15
166. Wilks, C.m., Oakley Browne, M. & Jenner, B.L., 2008, 'Attracting psychiatrists to a rural area - 10 years on', *Rural and remote health*, vol.8, no.1, ppp.824
167. Wilpulpolprasert, S. & Pengpaibon, P., 2003, 'Integrated strategies to tackle the inequitable distribution of doctors in Thailand: four decades of experience', *Human resources for health*, vol.1, no.12, pp.1-17.
168. Wongwatcharapaiboon, P., Sirikanokwilai, N. & Pengpaiboon, P., 1999, 'The 1997 massive resignation of contracted new medical graduates from the Thai Ministry of Health: What reasons behind?', *Human Resources for Health Development Journal*, vol.3, no.2, pp.147 - 156.
169. Working group on IMF programs and health spending, 2007, 'Does the IMF constrain health spending in poor countries? Evidence and agenda for action', Centre for Global Development, Washington DC
170. Yaya Bocoum, F., 2008, 'Financial incentives and mobility of the health workforce in Burkina Faso', Presentation made at the First Global Forum on Human Resources for Health, Kampala
171. Yumkella, F. 2006, 'Retention of health care workers in low-resource settings: Challenges and responses', *Capacity project*, Available at http://www.capacityproject.org/images/stories/files/techbrief_1.pdf
172. Yumkella, F., 2005, 'Retention: health workforce issues and response actions in low-resource settings', *Capacity project resource paper*, Available at http://www.capacityproject.org/images/stories/files/retention_paper_long050823.pdf
173. Yumkella, F., 2006, 'Retention of health care workers in low-resource settings: challenges and responses', *Capacity project technical brief*, Available at http://www.capacityproject.org/images/stories/files/techbrief_1.pdf

174. Zeytinoglu, I.U., Denton, M., Davies, S., Baumann, A., Blythe, J. & Boos, L., 2007, 'Deteriorated external work environment, heavy workload and nurses' job satisfaction and turnover intention', *Canadian public policy - Analyse de politiques*, Vol. 33, pp.31-47.
175. Zurn, P., Dolea, C. & Stilwell, B., 2005, 'Nurse retention and recruitment: developing a motivated workforce', Issue Paper 4, International Council of Nurses, Geneva
176. Anand S, Bärnighausen T. Human resources and health outcomes: cross-country econometric study. *Lancet* 2004; 364: 1603–09
177. Anand S, Bärnighausen T. Health workers and vaccination coverage in developing countries: an econometric analysis. *Lancet* 2007; 369: 1277–85
178. Speybroeck N, Kinfu Y, Dal Poz M, Evans DB. Reassessing the relationship between human resources for health, intervention coverage and health outcomes. Background paper for WHR2006. Available online at: http://www.who.int/hrh/documents/reassessing_relationship.pdf
179. World Health Organization (2006) *World Health Report 2006: Working together for health*. WHO, Geneva.
180. Travis P, Bennett S, Haines A, et al. (2004) Overcoming health-systems constraints to achieve the Millennium Development Goals. *Lancet*, 364: 900– 06.
181. Dreesch N, Dolea C, Dal Poz MR, et al. (2005) An approach to estimating human resource requirements to achieve the Millennium Development Goals. *Health Policy and Planning*, 20(5): 267–76.
182. Zurn P, Dal Poz M, Stilwell B, Adams O. Imbalance in the health workforce. *Human Resources for Health* 2004, 2:13
183. *World Urbanization Prospects: The 2007 Revision Population Database*, UN Population Division, 2008. Accessed on 26 January 2009: <http://esa.un.org/unup/index.asp?panel=6>
184. United Nations. 2004. *World Urbanization Prospects, the 2003 Revision*. United Nations Publication sales No. E.04.XIII.
185. Buttiens, H, Marchal, B, De Brouwere, V. Skilled attendance at childbirth: let us go beyond the rhetorics. Editorial. *Tropical Medicine & International Health*. 9(6):653-654, June 2004.
186. Hamilton K, Yau J. *The Global Tug-of-War for Health Care Workers*. Migration Policy Institute, December 1, 2004. Washington, DC. Available at: <http://www.migrationinformation.org/Feature/print.cfm?ID=271>
187. WHO, 2004. Awases A, Gbary A, Nyoni J, Chatora R: *Migration of health professionals in six countries: a synthesis report*. Brazzaville, WHO; 2004
188. Hongoro C, Normand C: *Health Workers: Building and Motivating the Workforce*. In *Disease Control Priorities in Developing Countries*. Volume Chapter 71. 2nd edition. Edited by: Jamison DT et al. World Bank, WHO, & Fogarty International Centre of the National Institutes of Health; 2006.
189. Dieleman M, Hammeijer H. Improving health worker performance: in search of promising practices. WHO, 2005. Available at: http://www.who.int/hrh/resources/improving_hw_performance.pdf
190. Hanson, Kara and Jack, William G. *Health Worker Preferences for Job Attributes in Ethiopia: Results of a Discrete Choice Experiment (2007)*. iHEA 2007 6th World Congress: Explorations in Health Economics Paper. Available at SSRN: <http://ssrn.com/abstract=994212>
191. Chopra, M, Munro, S, Lavis, JN, Vist G, Bennett S. Effects of policy options for human resources for health: an analysis of systematic reviews. *Lancet* 2008; 371: 668–74
192. Waillis-Shattuck M, Bidwell P, Thomas S, et al. Motivation and retention of health workers in developing countries: a systematic review. *BMC Health Services Research* 2008, 8:247
193. Douglas M: Supervision of rural health centres in Papua New Guinea: consolidation of the delivery of health services. *P N G Med J* 1991, 34(2):144-148.
194. Loevinsohn BP, Guerrero ET, Gregorio SP: Improving primary health care through systematic supervision: a controlled field trial. *Health Policy Plan* 1995, 10(2):144-153.
195. Marquez L, Keane L: *Making Supervision Supportive and Sustainable: New Approaches to Old Problems*. In *Management and Leadership Program*, Produced for the Maximizing Access and Quality Initiative (MAQ) Edited by: Health MS. Marquez, L; Kean, L. (2002).

Published by Management Sciences for Health [MSH], Supplement to Population Reports, Volume XXX, No. 4.; 2002

196. Mangham LJ, Hanson K, McPake B. How to do (or not to do) . . . Designing a discrete choice experiment for application in a low-income country. *Health Policy and Planning* 2008;1–8
197. Grobler LA, Marindi PN, Mabunda SA, Reuter H, Volmink J. Interventions for increasing the proportion of health professionals practising in underserved communities (Protocol). *Cochrane Database of Systematic Reviews* 2005, Issue 1, Art. No.: CD005314. DOI: 10.1002/14651858. CD005314
198. Dumont J.-C., Zurn P., Church J. and Le Thi C. (2008), *International Mobility of Health Professionals and Health Workforce Management in Canada: Myths and Realities*, OECD Health Working Papers 40, Organisation for Economic Co-operation and Development & World Health Organization.
199. Cash R. et Ulmann P. (2008), *Projet OCDE sur la Migration des Professionnels de Santé : Le Cas de la France*, OECD Health Working Papers 36
200. World Bank, 2009. *Reducing Geographical Imbalances of Health Workers: What works, what does not and why? A Labor Market Perspective of Rural-Urban Health Workforce Disparities, Policy Solutions and Experiences in Sub-Saharan Africa (forthcoming)*