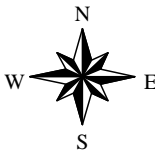




World Health Organization

Leprosy Annual New Case Detection and Registered Prevalence in Myanmar townships, 2005



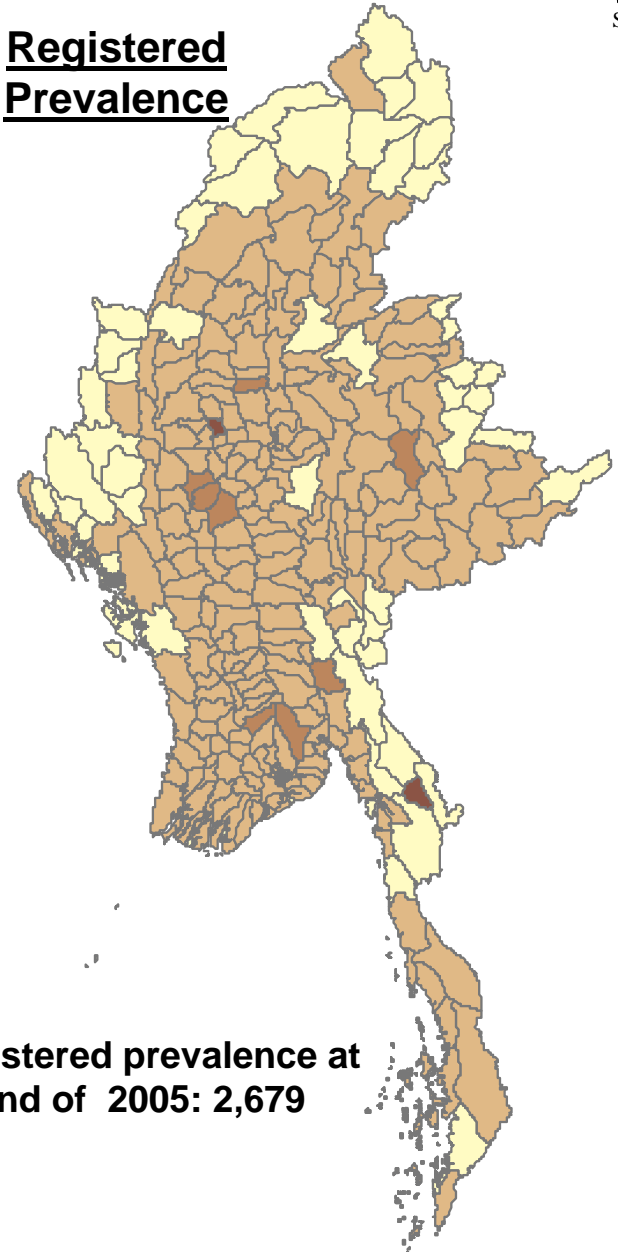
Annual New Case Detection



Total new cases detected in 2005: 3,499

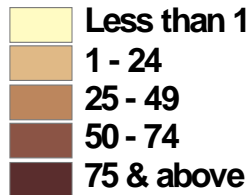
The boundaries and names shown and the designations used on this map do not imply the expression of any opinion whatsoever on the part of the World Health Organization concerning the legal status of any country, territory, city or area or of its authorities, or concerning the delimitation of its frontiers or boundaries. Dotted lines on maps represent approximate border lines for which there may not yet be full agreement.

Registered Prevalence



Registered prevalence at end of 2005: 2,679

Number of cases



© WHO 2006