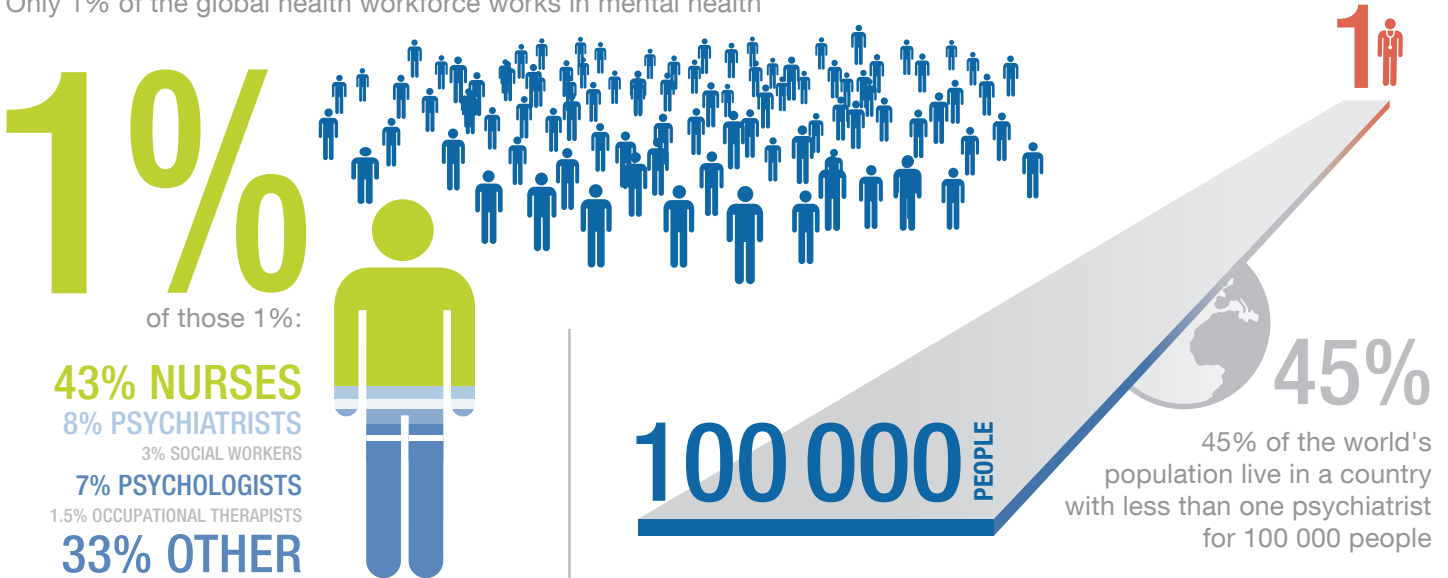


GLOBAL MENTAL HEALTH

HOW ARE WE DOING?

HUMAN RESOURCES

Only 1% of the global health workforce works in mental health



[CLICK HERE](#)
for country-specific information

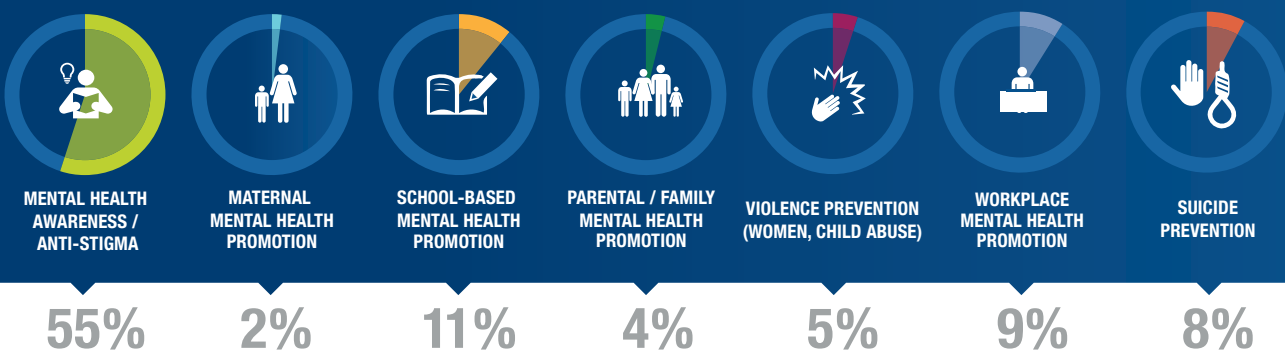
FINANCIAL RESOURCES

Median public expenditure on mental health per person



PROMOTION & PREVENTION

Global percentage of mental health prevention and promotion programme types



COUNTRIES WITH NATIONAL SUICIDE PREVENTION STRATEGY

0
LOW-INCOME COUNTRIES

VS

1/3
OF HIGH-INCOME COUNTRIES

SERVICES

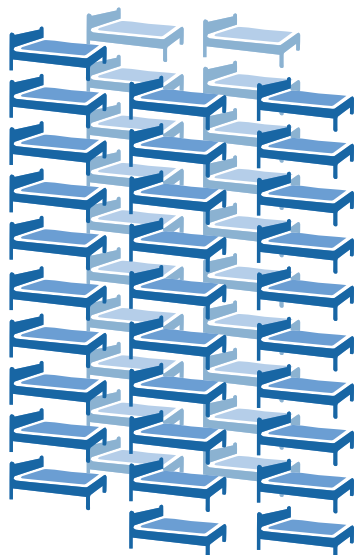
Median number of mental health beds per 100 000 population

5



LOW- AND LOWER-MIDDLE INCOME COUNTRIES

50



HIGH-INCOME COUNTRIES

[CLICK HERE](#) for country-specific information

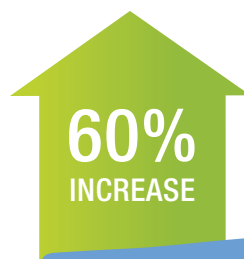


90%
TOTAL SERVICE CONTACT

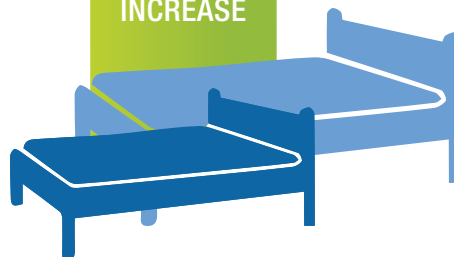


OUTPATIENT SERVICES

90% of total service contact by people with mental disorders is through outpatient services (as opposed to inpatient services)



60% increase in beds available in general hospital psychiatric wards since 2011



POLICIES & LAWS



Appropriate policies, plans and laws form the bedrock for good governance and service development

2/3 

WHO Member States have a stand-alone **POLICY OR PLAN** for mental health

1/2 

WHO Member States have a stand-alone **MENTAL HEALTH LAW**

HOWEVER
IN MANY COUNTRIES



policies, plans and laws are **NOT FULLY IN LINE** with international human rights covenants



persons with mental disorders and family members **ARE NOT INVOLVED** in policy/plan/law development

[CLICK HERE](#) for country-specific information

