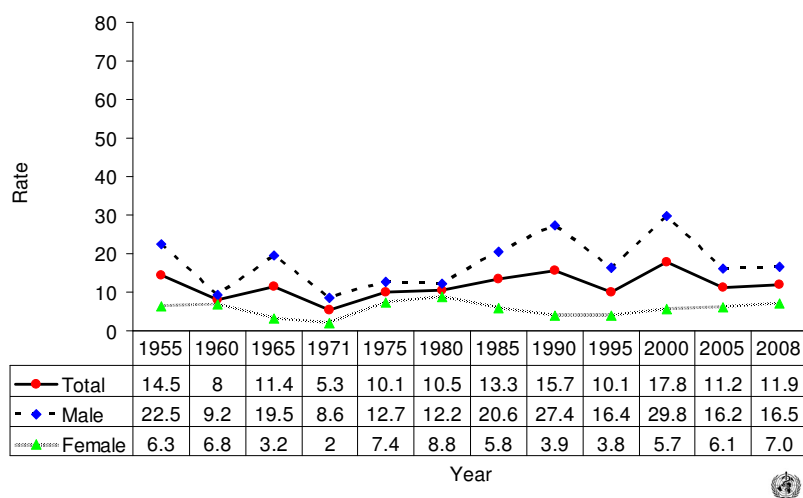
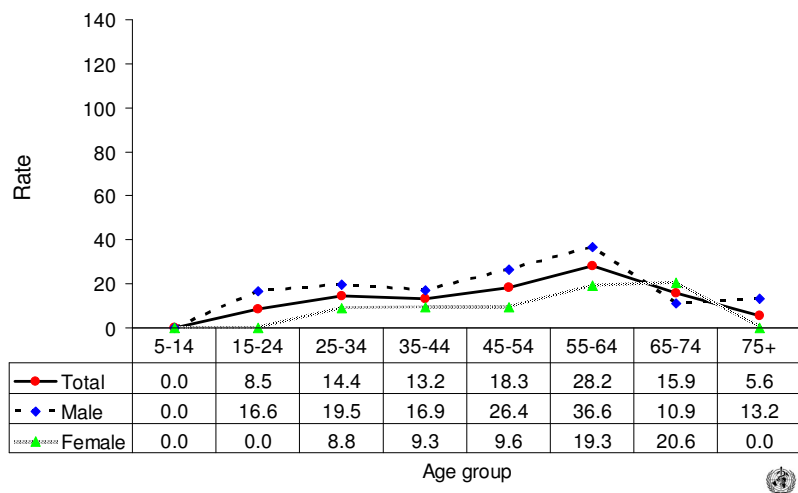


Suicide rates (per 100,000), by gender, Iceland, 1955-2008.



Suicide rates (per 100,000), by gender and age, Iceland, 2008.



Number of suicides by age group and gender. ICELAND, 2008.

Age (years)	5-14	15-24	25-34	35-44	45-54	55-64	65-74	75+	All
Males	0	4	5	4	6	6	1	1	27
Females	0	0	2	2	2	3	2	0	11
Total	0	4	7	6	8	9	3	1	38