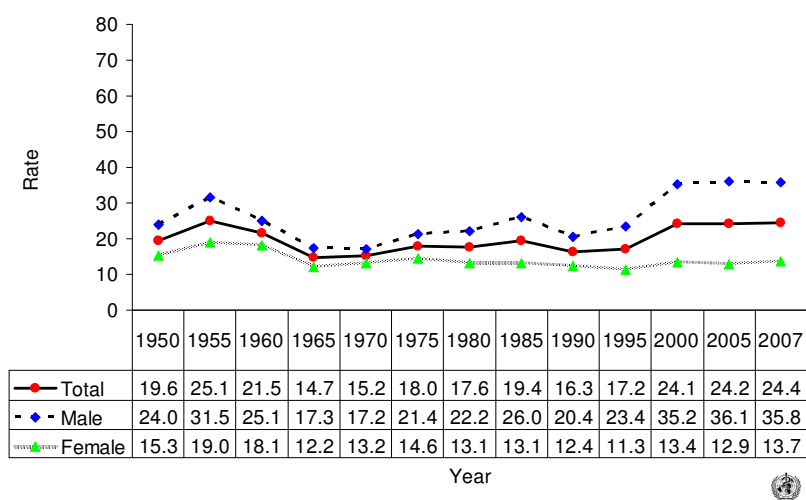
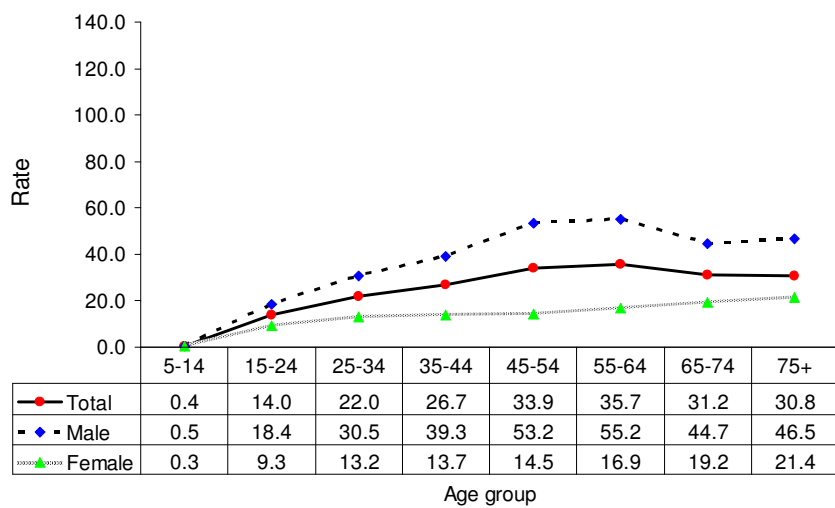


Suicide rates (per 100,000), by gender, Japan, 1950-2007.



Suicide rates (per 100,000), by gender and age, Japan, 2007.



Number of suicides by age group and gender. JAPAN, 2007.

Age (years)	5-14	15-24	25-34	35-44	45-54	55-64	65-74	75+	All
Males	31	1252	2596	3444	4155	5095	3088	2205	22007
Females	16	596	1084	1173	1129	1616	1492	1691	8820
Total	47	1848	3680	4617	5284	6711	4580	3896	30827