

# SPEED

is at the core of the road traffic injury problem.



**Excessive speed** is when a vehicle exceeds the posted speed limit

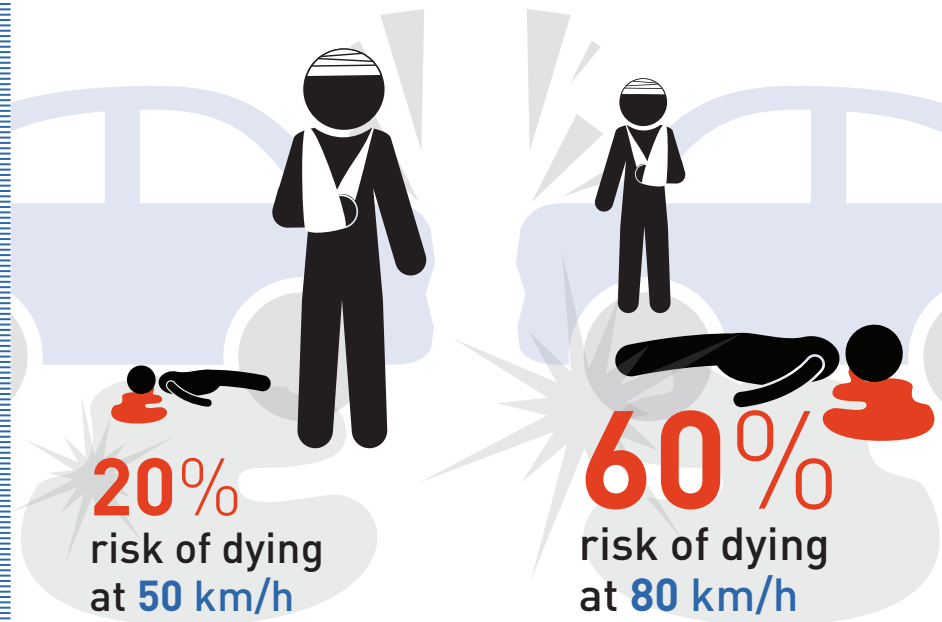


**40–50%** of people drive above the speed limit

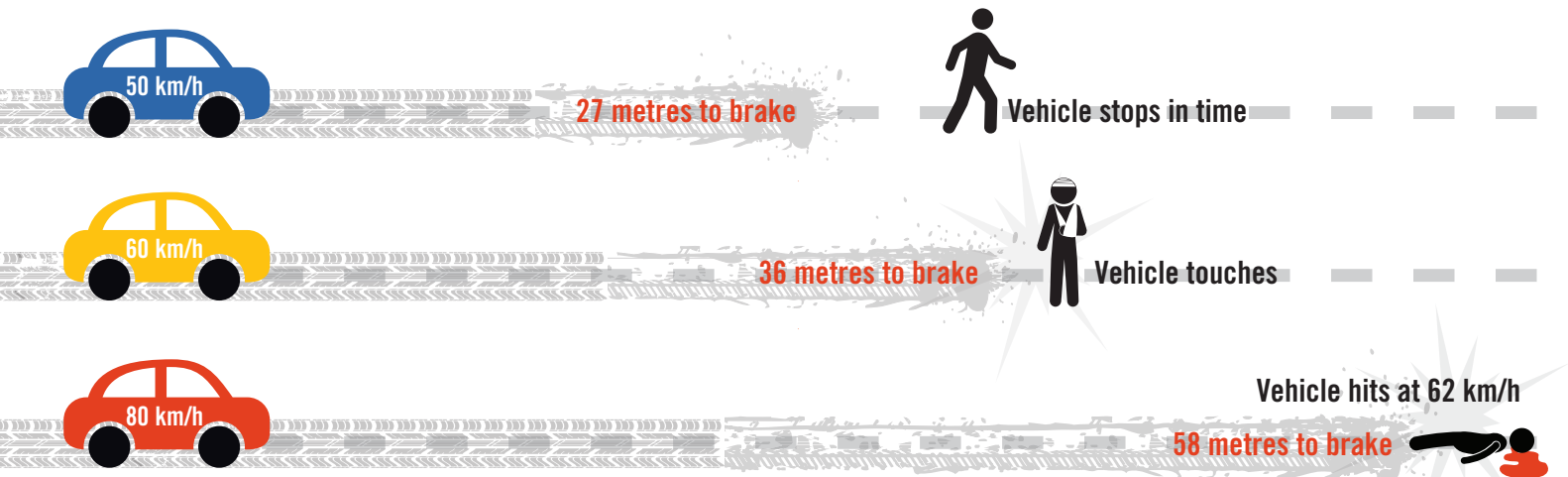


**1** in **3** deaths on the road in high-income countries is due to speed

The higher the speed of the vehicle, the higher the **risk** of injury and death for pedestrians



The higher the speed of the vehicle, the greater the **stopping distance**



Source: *Speed management*. Paris, France, OECD, 2006



World Health Organization



Save Lives  
#SlowDown

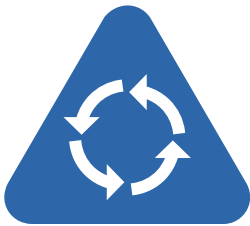
# MANAGING SPEED



includes measures that bring drivers to a safe speed, avoiding injuries and deaths. It also reduces air and noise pollution and saves fuel.

1

Building or modifying roads to include features that calm traffic



2

Establishing speed limits appropriate to the function of each road



3

Enforcing speed limits



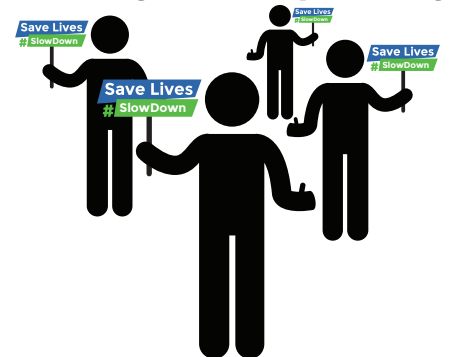
4

Installing in-vehicle technologies



5

Raising awareness about the dangers of speeding



! For more information: [www.who.int/violence\\_injury\\_prevention/road\\_traffic/en/](http://www.who.int/violence_injury_prevention/road_traffic/en/)