
COVID-19 Vaccination Insights Report

Released on 04 March 2024

Covering January 2021 - December 2023

Notes & disclaimer

Description:

- A standard analytic report produced of key COVID-19 vaccine implementation data, including uptake, supply received, and delivery financing across WHO Member States and the COVAX AMC portfolio

Data inputs:

- UN DESA Population Division Population Data (Total population; 12+ population; 18+ population; 60+ population)
- UNICEF COVID-19 Vaccine Financial Monitoring Database (Total allocated external financing for vaccine delivery)
- UNICEF COVID-19 Vaccine Market Dashboard Data (Total COVID-19 vaccine doses delivered [all sources])
- WHO/UNICEF electronic Joint Reporting Form (eJRF) (Uptake in healthcare worker and 60+ populations, gender-disaggregated uptake)
- WHO COVID-19 Vaccine Administration Data System (Total doses administered; Individuals with at least one dose; Individuals fully vaccinated)

Methodology:

- Methods for analyses presented in this report are contained in the COVID-19 Vaccination Data & Monitoring Coordination Manual ([link](#))

Inquiries:

- Please contact the COVID-19 Vaccination Data Team at c19vxdata@who.int.

Disclaimer:

- The data found in this report have been produced and processed from sources believed to be reliable. While these data and analyses are provided in good faith and to the best of the World Health Organization's (WHO's) knowledge, WHO does not commit to it being up to date. While every effort is made to ensure the data quality, the data and analyses are provided "as is." The burden of fitness of the data and analyses lies completely with the user. The accuracy of any user's statistical analysis and any reported findings are not the responsibility of WHO. WHO does not make any warranty, express or implied, including warranties of fitness for a particular purpose, or assume any legal liability or responsibility for the accuracy, completeness, reliability, or usefulness of any information provided (either isolated or in the aggregate), or represent that its use would not infringe privately owned rights.

Maps in this report do not reflect a position by WHO on the legal status of any country or territory or the delimitation of any frontiers.

Contents

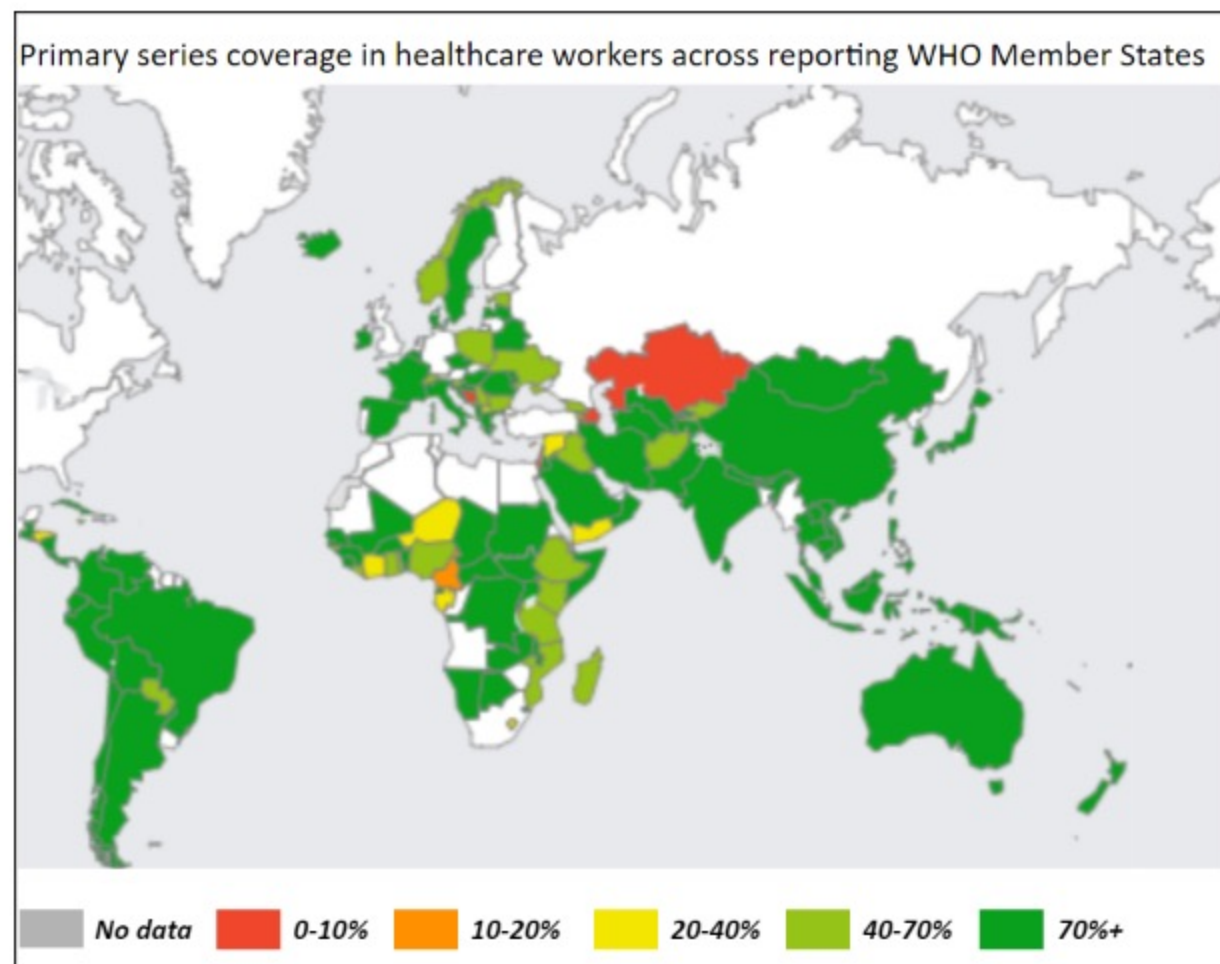
- I. WHO Member State analysis
- II. COVAX AMC portfolio analysis
- III. Annexes

I. WHO Member State Analysis

Key figures on COVID-19 vaccination across WHO Member States

Current	3-month change	
13.6bn	+48.7M	doses of COVID-19 vaccines have been administered globally
89 %	+0.3%	of healthcare workers have received a complete primary series across WHO MS
31 %	+0.9%	of healthcare workers have received a first booster dose across WHO MS
84 %	+1.6%	of older adults have received a complete primary series across WHO MS
58 %	+2.5%	of older adults have received a first booster dose across WHO MS
67 %	+0.2%	of the general population has received a complete primary series across WHO MS
32 %	+0.3%	of the general population has received a first booster dose across WHO MS

Healthcare worker coverage across reporting WHO Member States



WHO region	Primary series coverage	Booster coverage
AFR	67 %	12 %
AMR	98 %	76 %
EMR	80 %	50 %
EUR	73 %	28 %
SEAR	100 %	99 %
WPR	96 %	2 %
Total	89 %	31 %

Income group	Primary series coverage	Booster coverage
1) LIC	66 %	8 %
2) LMIC	89 %	69 %
3) UMIC	92 %	26 %
4) HIC	89 %	16 %
Total	89 %	31 %

143 (+1)

WHO MS have reported at least once on healthcare worker vaccination coverage

89 % (+0.3%)

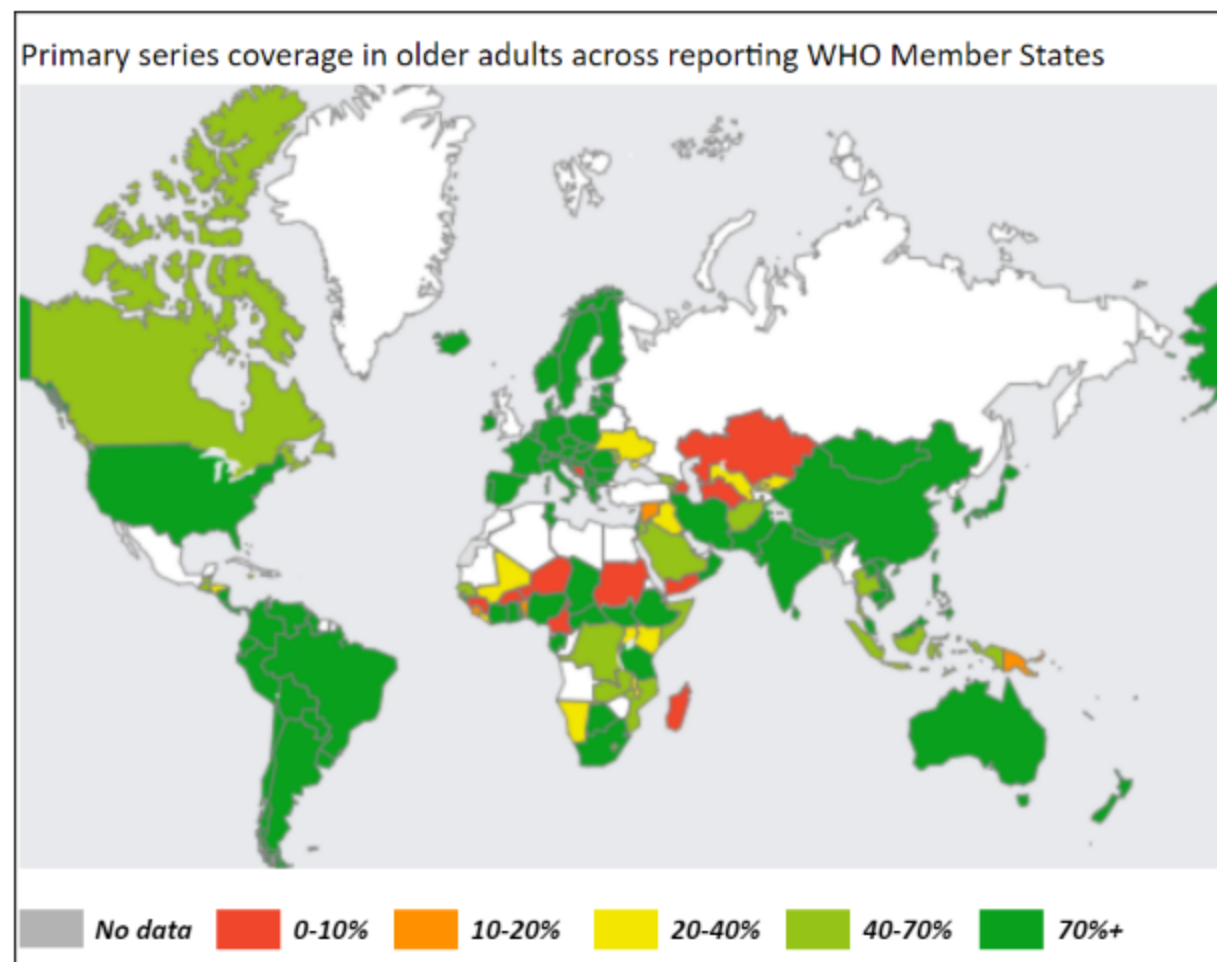
of healthcare workers have a complete primary series across reporting WHO MS

31 % (+0.9%)

of healthcare workers have at least one booster dose across reporting WHO MS

Sources: WHO/UNICEF eIRF and other monthly regional reporting systems; ILO health workforce data. **Notes:** Coverage figures are capped at 100%. Target population definitions vary; this can impact uptake figures reported. Estimated healthcare worker population sizes vary by source (ILO vs. country reports). A correction factor was applied to countries reporting inconsistent figures. Cook Islands and Niue are not categorized in an income group by the World Bank.

Older adult coverage across reporting WHO Member States



WHO region	Primary series coverage	Booster coverage
AFR	62 %	9 %
AMR	91 %	71 %
EMR	64 %	27 %
EUR	90 %	80 %
SEAR	77 %	30 %
WPR	91 %	75 %
Total	84 %	58 %

Income group	Primary series coverage	Booster coverage
1) LIC	39 %	4 %
2) LMIC	78 %	29 %
3) UMIC	88 %	68 %
4) HIC	95 %	87 %
Total	84 %	58 %

158 (+0)

WHO MS have reported at least once on older adult vaccination coverage

84 % (+1.6%)

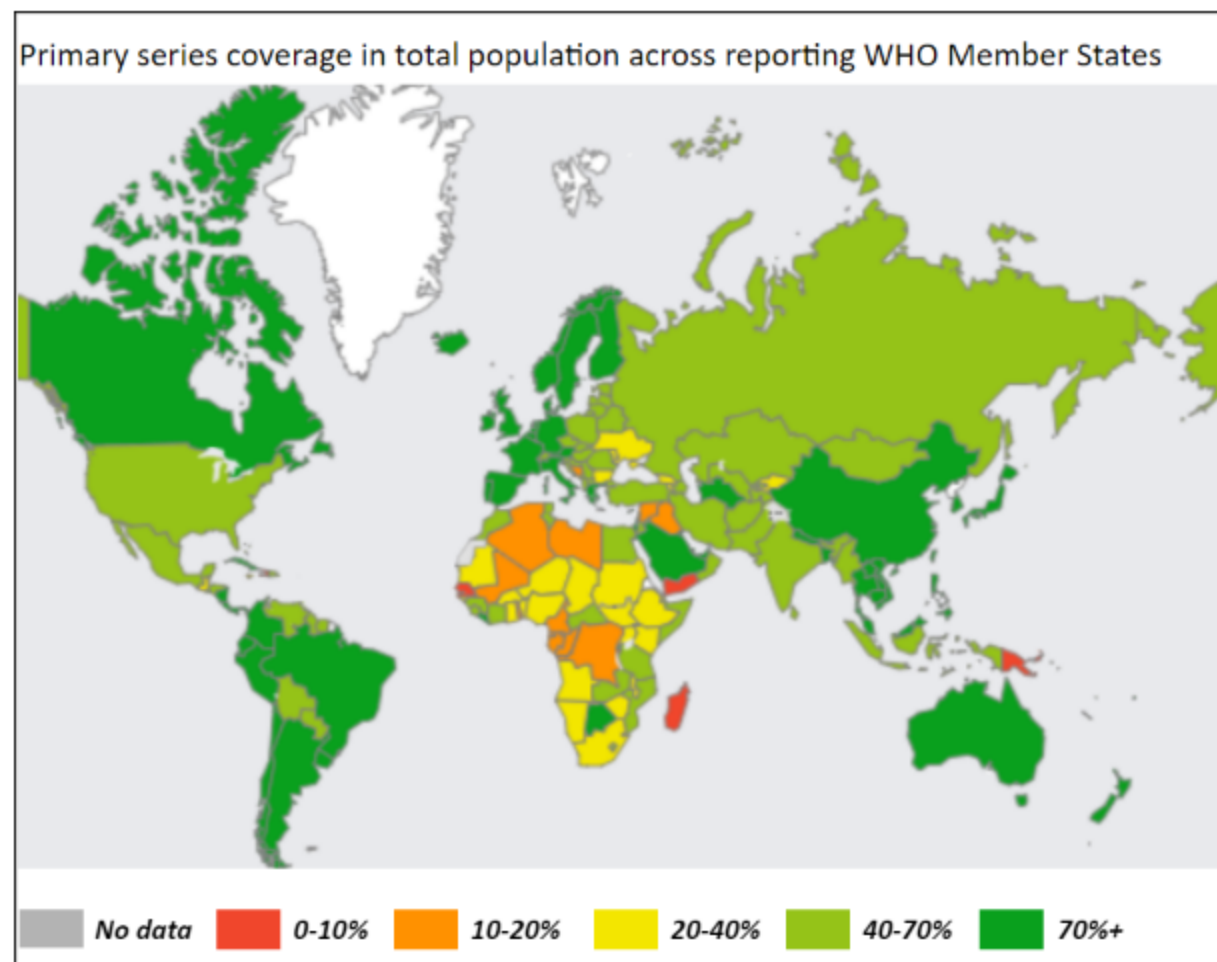
of older adults have a complete primary series across reporting WHO MS

58 % (+2.5%)

of older adults have at least one booster dose across reporting WHO MS

Sources: WHO/UNICEF eIRF and other monthly regional reporting systems; UN Population Division. **Notes:** Coverage figures are capped at 100%. Target population definitions vary; country-specific definitions of older adults are used to calculate older adult population population denominators using data from the United Nations Population Division. Cook Islands and Niue are not categorized in an income group by the World Bank.

Total population coverage across reporting WHO Member States



WHO region	Primary series coverage	Booster coverage
AFR	33 %	6 %
AMR	72 %	42 %
EMR	52 %	19 %
EUR	65 %	37 %
SEAR	70 %	22 %
WPR	86 %	55 %
Total	67 %	32 %

Income group	Primary series coverage	Booster coverage
1) LIC	31 %	4 %
2) LMIC	62 %	20 %
3) UMIC	77 %	46 %
4) HIC	76 %	50 %
Total	67 %	32 %

13.6bn (+48.7M)

doses of COVID-19 vaccines administered globally since rollout start

67 % (+0.2%)

of the total population has a complete primary series across WHO MS

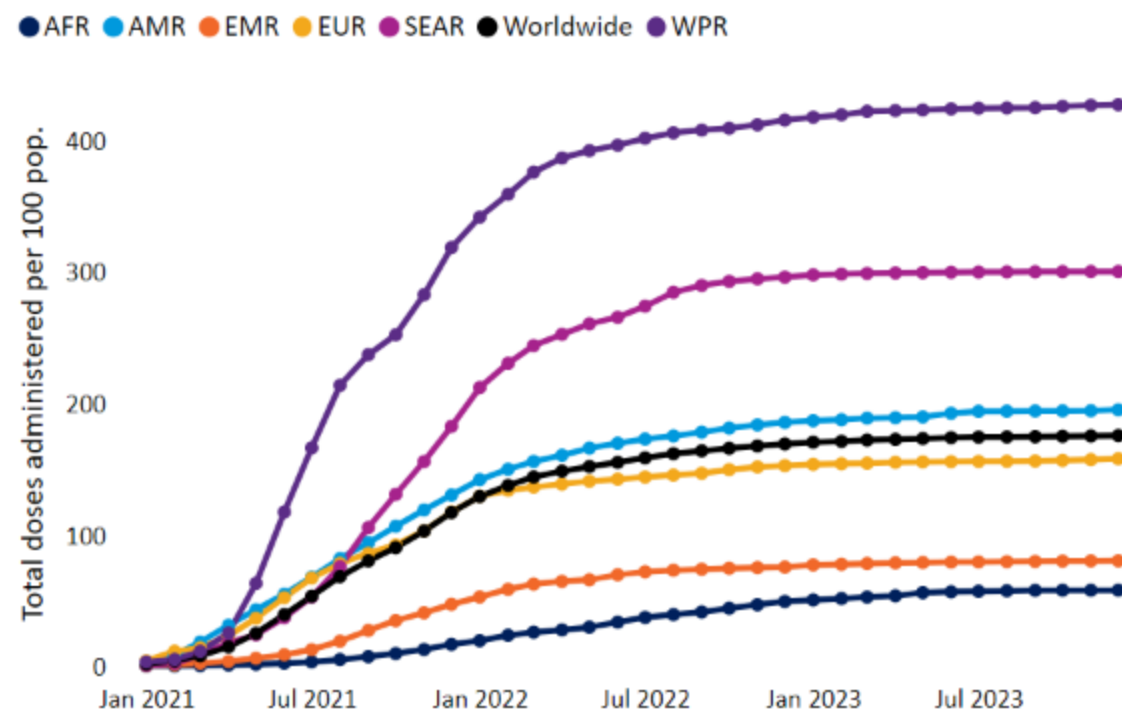
32 % (+0.3%)

of the total population has a booster dose across WHO MS

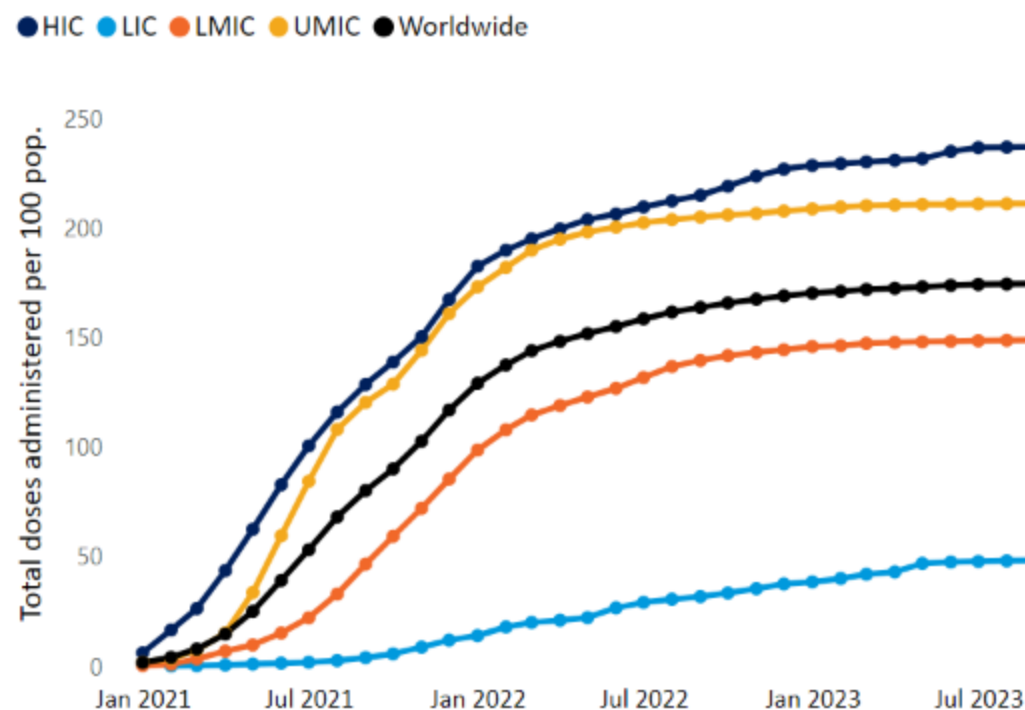
Sources: WHO COVID-19 vaccine administration data system. Notes: Cook Islands and Niue are not categorized in an income group by the World Bank.

Cumulative COVID-19 vaccine uptake over time across reporting WHO Member States, by WHO region and income group

COVID-19 vaccine doses administered per 100 population, cumulative, by WHO region

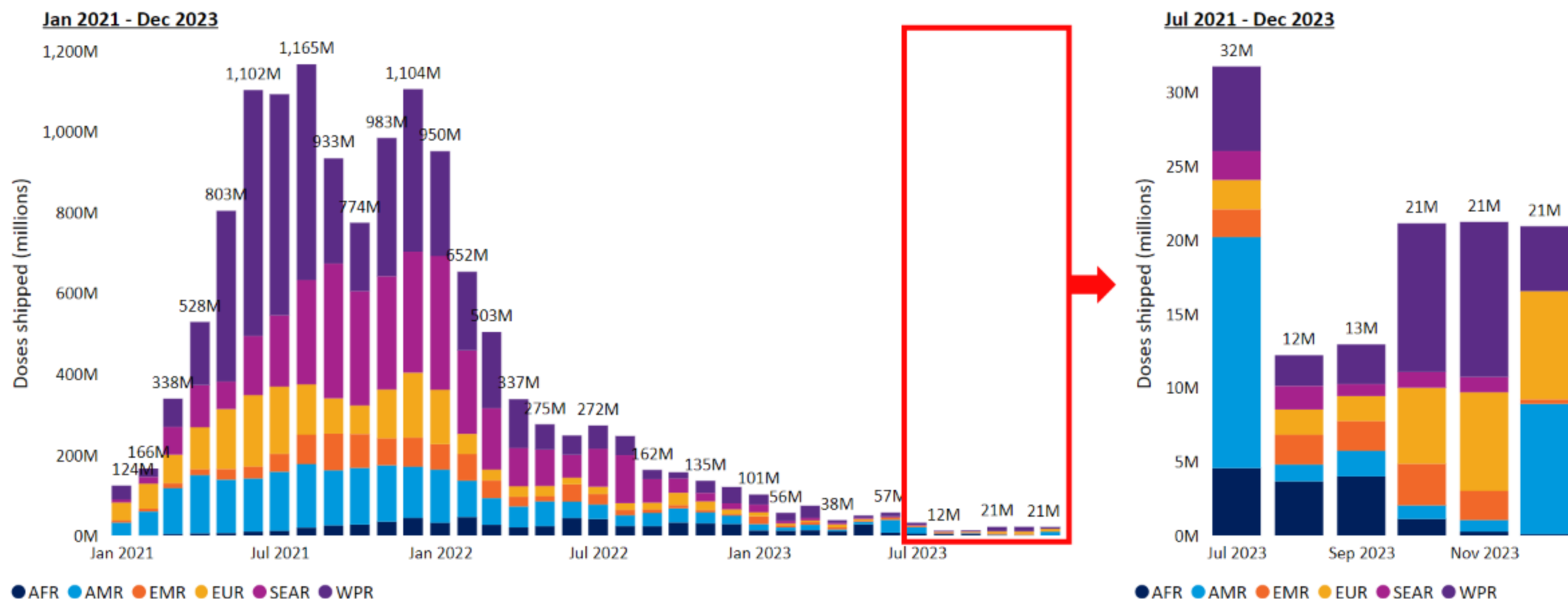


COVID-19 vaccine doses administered per 100 population, cumulative, by income group



Sources: WHO COVID-19 vaccine administration data system.

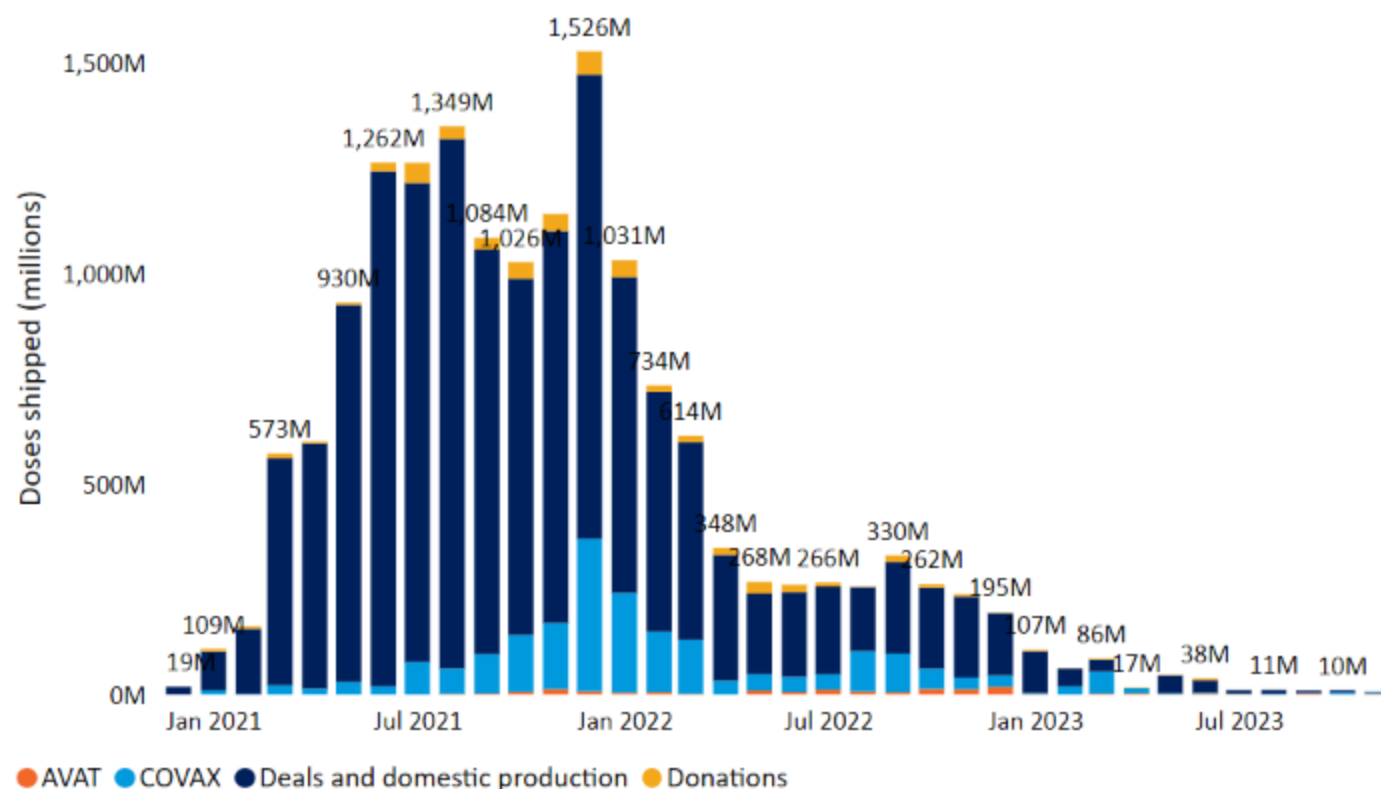
COVID-19 vaccine uptake by month across reporting WHO Member States by WHO region



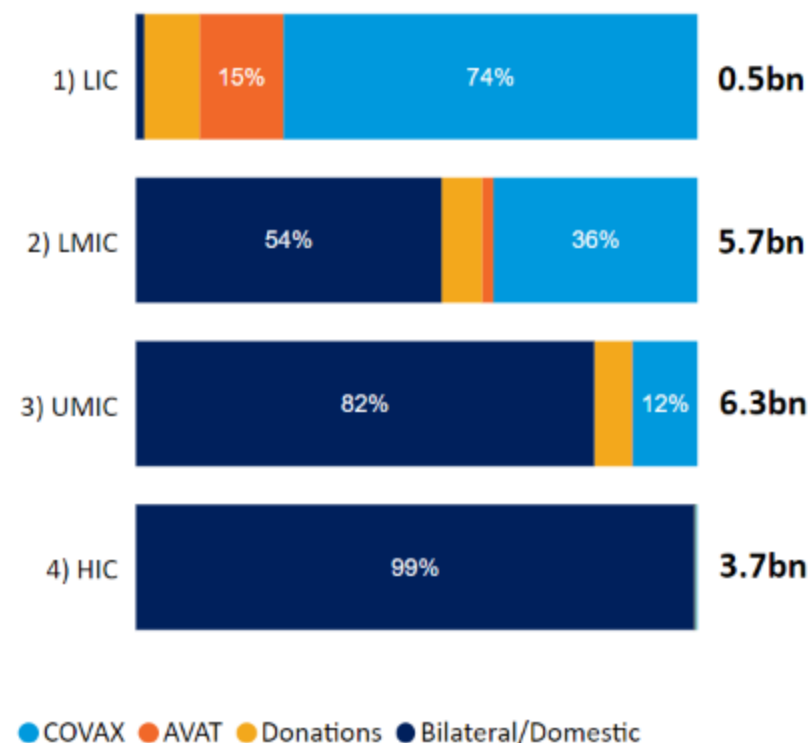
Source: WHO COVID-19 vaccine administration data system. Notes: Eritrea and DPR Korea have not started COVID-19 vaccination.

COVID-19 vaccine supply across WHO Member States, including all vaccine products from all sources

Vaccine deliveries by month, per mechanism (millions of doses)



Vaccines delivered by income group, per source (% tot.)



Sources: UNICEF COVID-19 Vaccine Market Dashboard. **Notes:** 'Donations' are donated doses not delivered through COVAX. Additional details on the methods employed to collect supply data are available on the UNICEF COVID-19 Vaccine Market Dashboard website.

II. COVAX AMC Portfolio Analysis

Aggregate vaccine implementation figures across AMC participants

Administration

Current	3-Month Change	
5.1bn	3.9M	Total number of vaccine doses administered across AMC participants since implementation start
2.5bn	3.5M	Total number of individuals with at least one dose across AMC participants
2.2bn	0.9M	Total number of individuals with a complete primary series across AMC participants
677M	0M	Total number of individuals with at least one booster dose across AMC participants
Supply & financing		
64%	0%	Median number of vaccine courses received as a percent of population across AMC participants
3.20	0	Median external allocated financing for vaccine delivery per capita across AMC participants

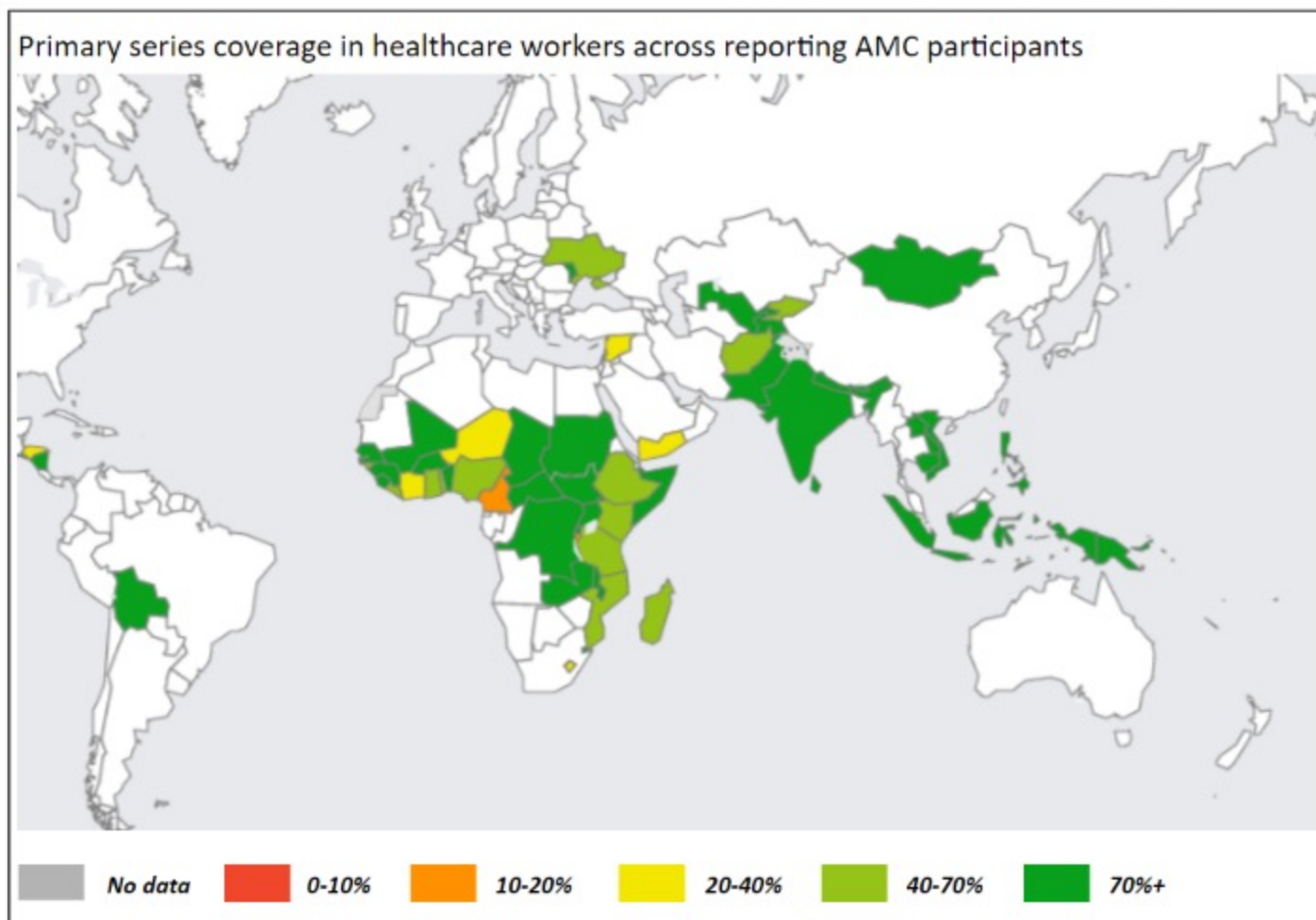
Coverage

Current	3-Month Change	
<u>Healthcare workers</u>		
72	0	Number of AMC participants that have reported at least once on healthcare worker primary series uptake
85 %	1%	Complete primary series coverage in healthcare workers across AMC participants
58 %	1%	Booster coverage in healthcare workers across AMC participants
<u>Older adults</u>		
76	1	Number of AMC participants that have reported at least once on older adult primary series uptake
72 %	0%	Complete primary series coverage in older adults across AMC participants
24 %	1%	Booster coverage in older adults across AMC participants
<u>Total population</u>		
57 %	0%	Complete primary series coverage in total population across AMC participants
17 %	0%	Booster coverage in total pop. across AMC participants

Sources: WHO COVID-19 vaccine administration data system; WHO/UNICEF EJRF and other monthly regional reporting systems; UNICEF COVID-19 Vaccine Market Dashboard.

Notes: A vaccine course is the number of doses required for a given product for its primary series.

Healthcare worker vaccination coverage across reporting AMC participants



Aggregate figures across AMC participants

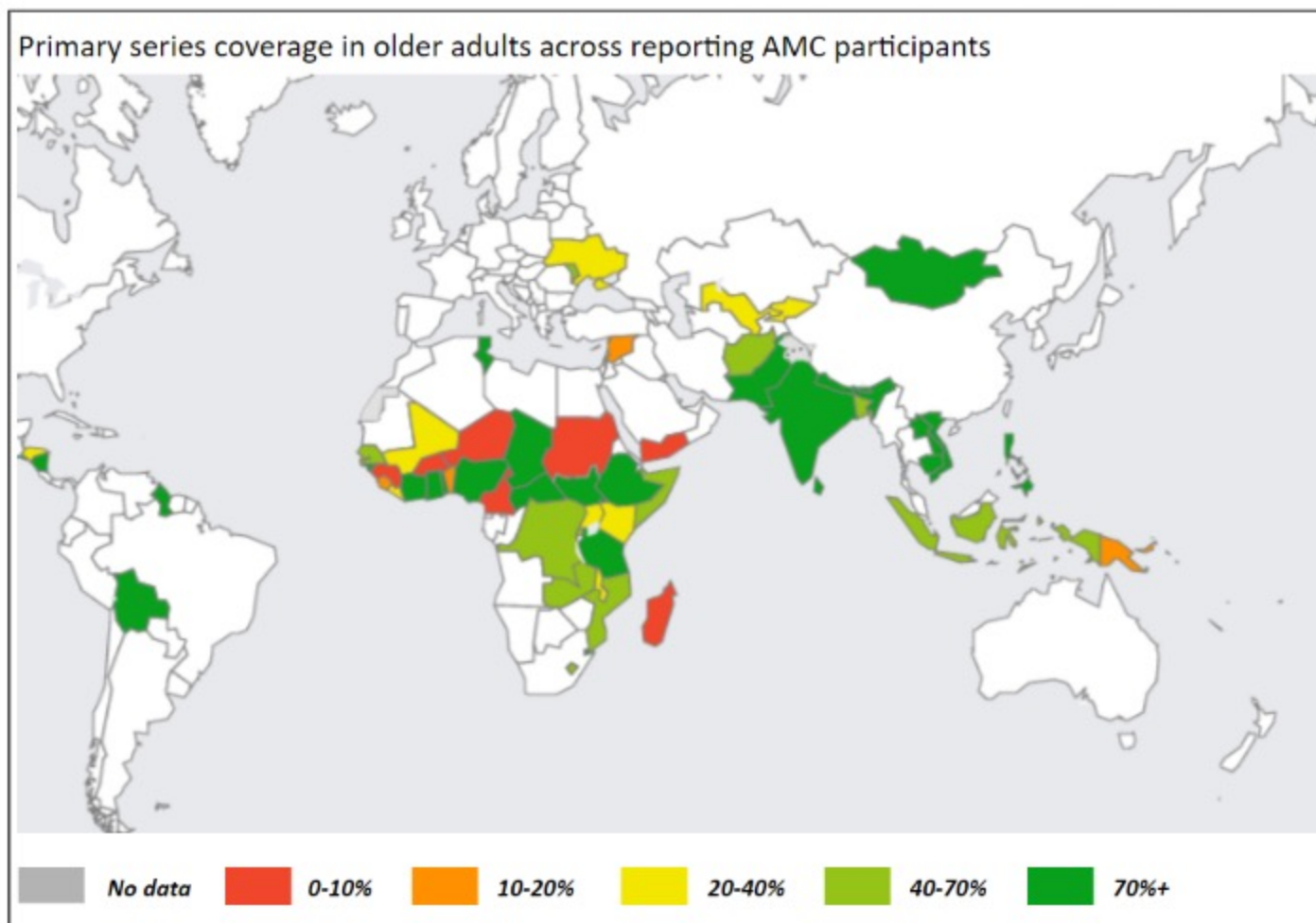
- 72 Number of AMC participants having reported at least once on healthcare worker vaccination coverage
- 88 % Healthcare workers in reporting AMC participants of total healthcare workers across all AMC
- 85 % Healthcare workers with a complete primary series
- 58 % Healthcare workers with a booster dose

Breakdown by WHO region

Region	Count of part.	At least one dose coverage	Primary series coverage	Booster coverage
AFR	34	82 %	67 %	12 %
AMR	5	81 %	81 %	70 %
EMR	7	76 %	75 %	45 %
EUR	5	71 %	71 %	17 %
SEAR	6	100 %	100 %	99 %
WPR	15	100 %	100 %	50 %
Total	72	89 %	85 %	58 %

Sources: WHO/UNICEF eIRF and other monthly regional reporting systems; ILO health workforce data. **Notes:** Coverage figures are capped at 100%. Target population definitions vary; this can impact uptake figures reported. Estimated healthcare worker population sizes vary by source (ILO vs. country reports). A correction factor was applied to countries reporting inconsistent figures.

Older adult vaccination coverage across reporting AMC participants



Aggregate figures across AMC participants

76

Number of AMC participants having reported at least once on older adult vaccination coverage

91 %

Older adults in reporting AMC participants of total older adults across all AMC

72 %

Older adults with a complete primary series

24 %

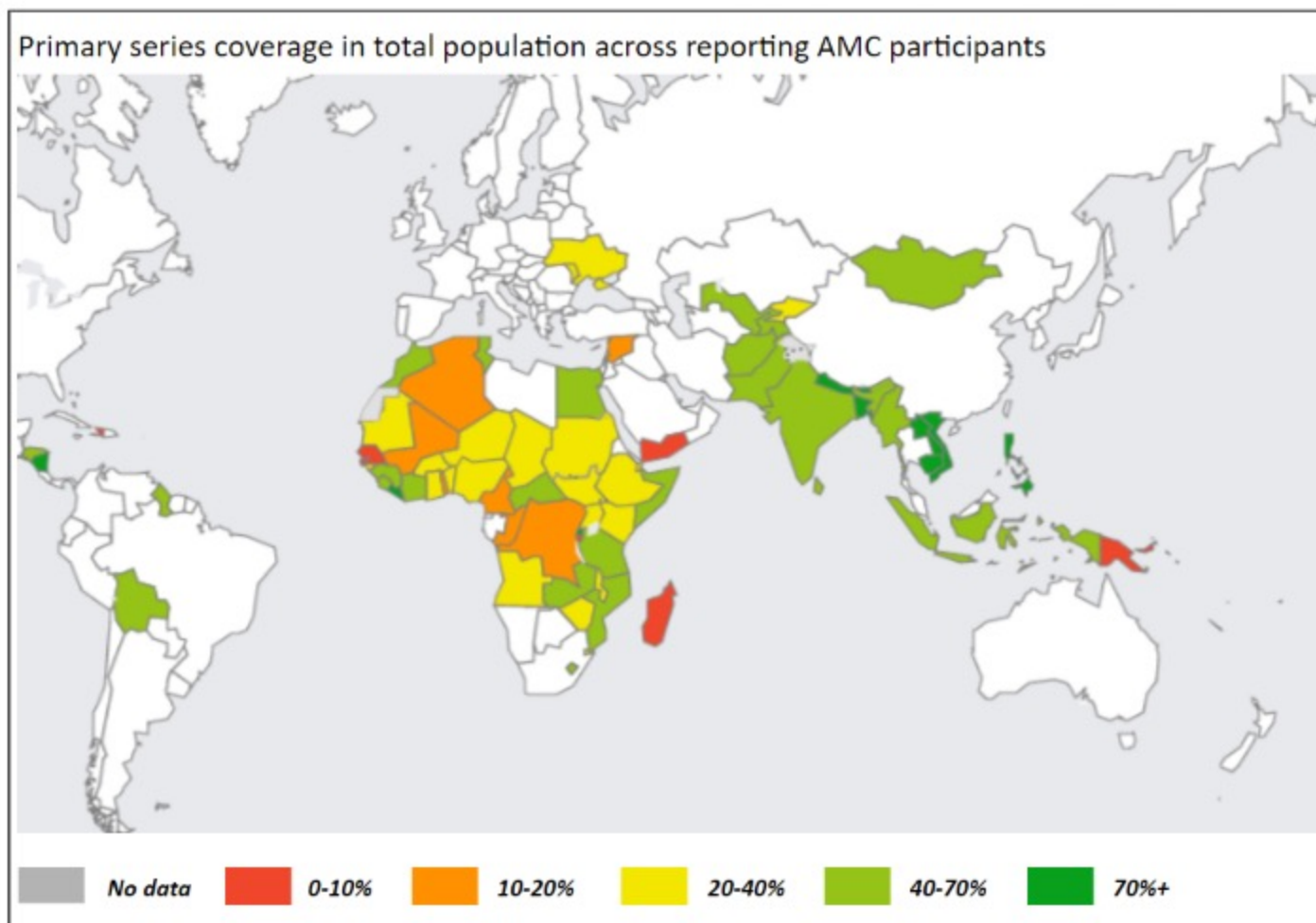
Older adults with a booster dose

Breakdown by WHO region

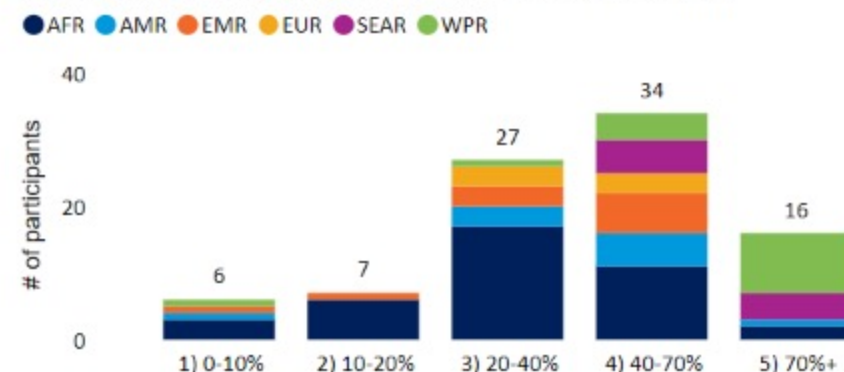
Region	Count of part.	At least one dose coverage	Primary series coverage	Booster coverage
AFR	33	72 %	62 %	9 %
AMR	7	71 %	65 %	41 %
EMR	8	66 %	64 %	17 %
EUR	5	37 %	34 %	12 %
SEAR	8	84 %	79 %	30 %
WPR	15	93 %	91 %	33 %
Total	76	78 %	72 %	24 %

Sources: WHO/UNICEF eIRF and other monthly regional reporting systems; UN Population Division. **Notes:** Coverage figures are capped at 100%. Target population definitions vary; country-specific definitions of older adults are used to calculate older adult population denominators using data from the United Nations Population Division.

Total population coverage across AMC participants



Participant count by primary series coverage category



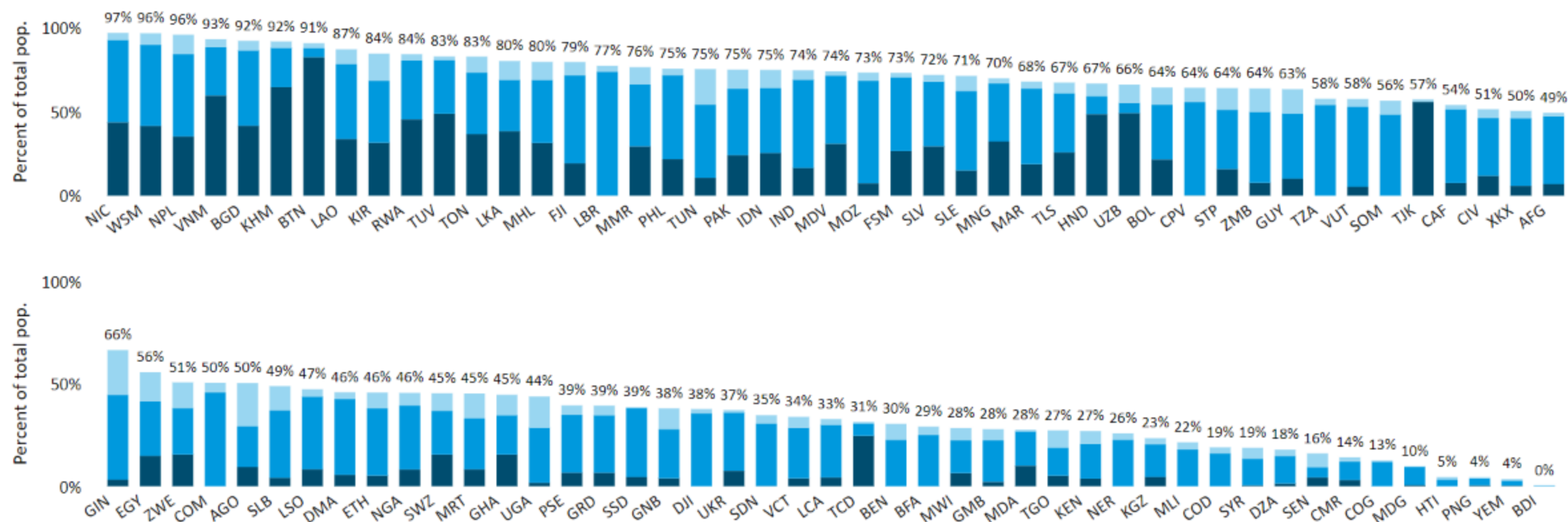
Breakdown by WHO region

Region	Count of part.	At least one dose coverage	Primary series coverage	Booster coverage
AFR	39	39 %	33 %	6 %
AMR	10	56 %	50 %	26 %
EMR	11	58 %	49 %	15 %
EUR	6	48 %	43 %	26 %
SEAR	9	76 %	70 %	21 %
WPR	15	81 %	77 %	39 %
Total	90	63 %	57 %	17 %

Source: WHO COVID-19 vaccine administration data system. Notes: Eritrea and DPR Korea have not started COVID-19 vaccination.

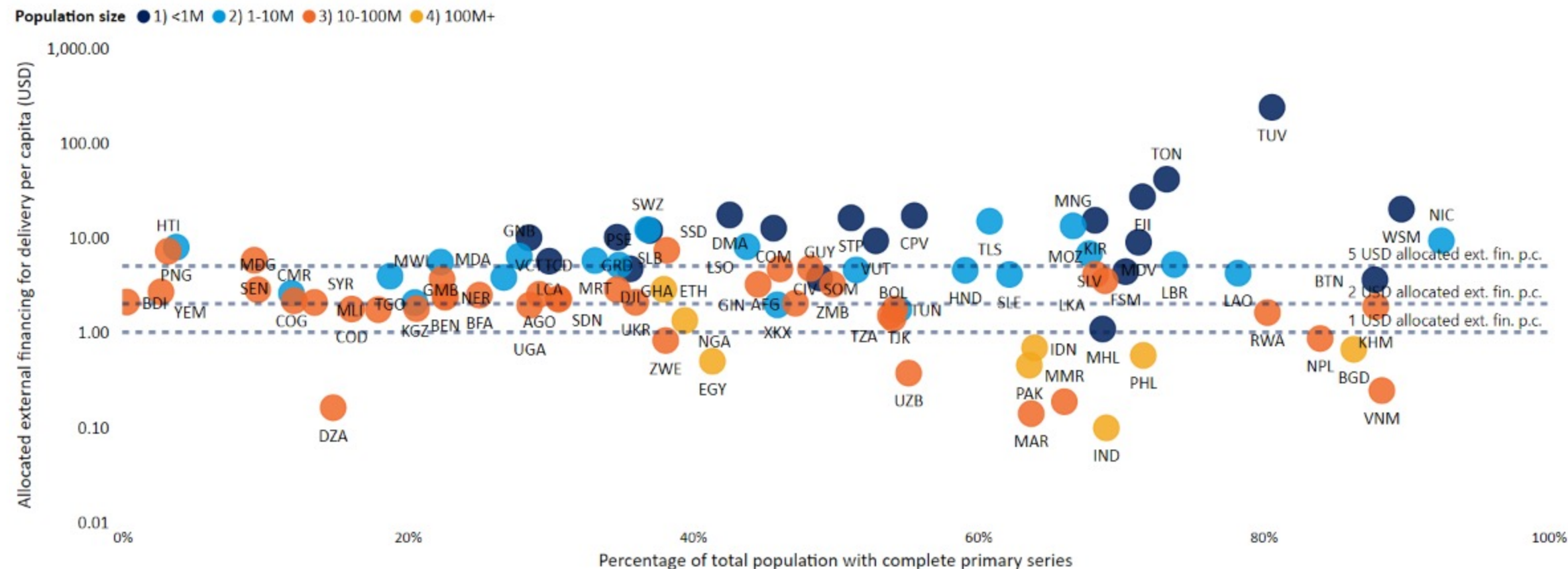
Coverage with a partial primary series, a complete primary series, and a complete primary series + booster dose across AMC participants

● Complete primary series + booster dose ● Complete primary series ● Partial primary series



Source: WHO COVID-19 vaccine administration data system. Notes: Eritrea and DPR Korea have not started COVID-19 vaccination.

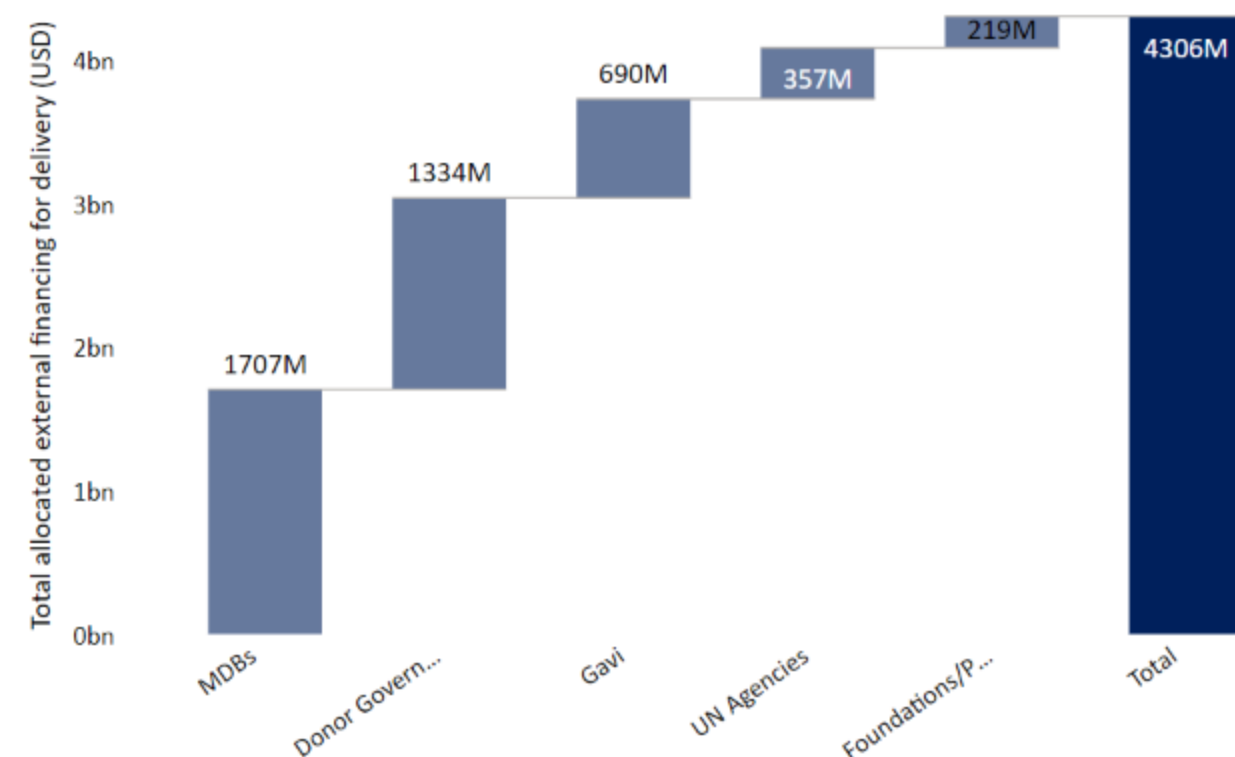
Percentage of total population with a complete primary series against allocated external financing per capita across AMC participants



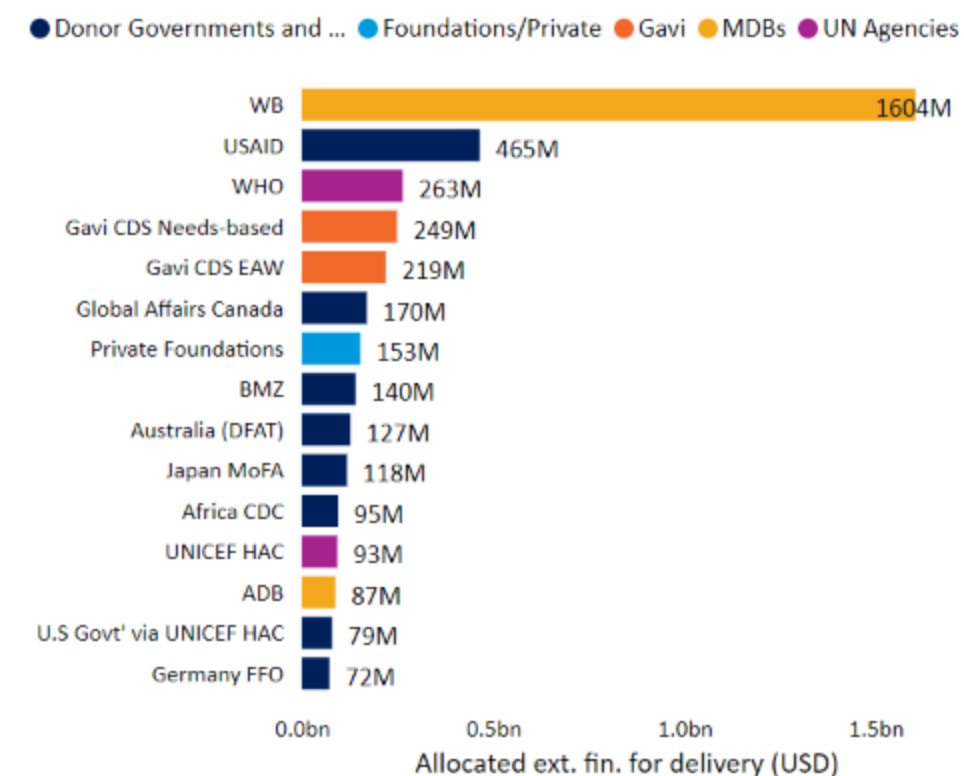
Sources: UNICEF COVID-19 Vaccine Financial Monitoring Database (C19VFM). **Notes:** Allocated external financing refers to financing earmarked or pledged for a specific country, including both disbursed and non-disbursed financing options. Additional details on the methods employed to collect supply data are available on the UNICEF C19VFM webpage.

Breakdown of total allocated external financing for delivery by funder type and funder across AMC participants

Breakdown of total allocated external financing (USD) for vaccine delivery by funder category



Funders (15) with greatest total allocated financing (USD) for vaccine delivery



Sources: UNICEF COVID-19 Vaccine Financial Monitoring Database (C19VFM). **Notes:** Allocated external financing refers to financing earmarked or pledged for a specific country, including both disbursed and non-disbursed financing options. Additional details on the methods employed to collect supply data are available on the UNICEF C19VFM webpage.

III. Annexes

Annex 1: Definitions

Term	Definition
<u>Course:</u>	<ul style="list-style-type: none">• Number of doses required for a given product for its primary series (e.g. 2 doses of Pfizer BioNTech - Comirnaty)
<u>Population coverage:</u>	<ul style="list-style-type: none">• Percentage of total population with a complete primary series with <u>any COVID-19 vaccine product from any source</u>
<u>Product utilization:</u>	<ul style="list-style-type: none">• Percentage of total doses of <u>any COVID-19 vaccine product from any source</u> received that have been used
<u>Daily vaccination rate:</u>	<ul style="list-style-type: none">• Number of doses of <u>any COVID-19 vaccine product from any source</u> administered per unit time as calculated by examining historical dose administration data