



Situation Summary

- As of 11 September, 311 COVID-19 confirmed cases are reported in Mongolia, of which 300 have recovered.
- The Government of Mongolia introduced the Action Plan for 2020-2024, which includes policy to mitigate socio-economic impact of COVID-19
- The State Emergency Commission has updated the repatriation schedule for September.
- Immunization for H1N1, H3N2, A, B group influenza virus to cover vulnerable population and health care workers will start by the end of the September.
- With the support from WHO and USAID, the National Center for Public Health organized a training on 'the public engagement and phone triaging during COVID-19 community transmission' on 7-11 September.
- 'Laboratory diagnostics of COVID-19' training is conducted at the National Center for Communicable Disease by the support of WHO. Total 32 laboratory professionals from 12 laboratories of 8 provinces and UB cities participated in the training.
- The Asian Development Bank (ADB) has approved a further grant to Mongolia of \$1.5 million from the Asia Pacific Disaster Response Fund (APDRF) to boost medical responses to the threat posed by the coronavirus disease (COVID-19) pandemic.
- According to Mongolian Bankers Association, bank loan issuance has reduced by 4.6 percent in the first half of 2020, and the consumer loan volume also dropped by 17 percent. Moreover, the volume of overdue consumer loans increased by 40 percent in the first quarter of 2020.

Upcoming Events and Priorities for the next two weeks

- National RCCE network meeting to finalize ToR, resource mapping and plan will be held on 17 Sep 2020
- Procedures of the Health Sector IMS will be approved by Deputy Prime Minister
- The multisectoral IMS procedures and multisectoral costed disaster risk management plan for health will be updated based on the lessons learned from simulation exercise and 7-month experience and APSED III TAG recommendations
- WG meeting to finalize IMS procedures and HR training plan will be held on 15 Sep
- 2-day workshop to establish provincial multisectoral IMS and train local IMS teams will be conducted in Bayan-Ulgii, Khovd, and Uvs provinces from 21-28 September 2020
- Ethical consent for "Age stratified population based sero-epidemiology" survey will be provided by MoH.



National Transmission Assessment

Stage 1: Imported Cases only.

As of 11 September, 311 COVID-19 confirmed cases are reported in Mongolia, of which 298 have recovered and 13 patients are under treatment. 6 patients undergoing treatment are in mild and 7 patients are in moderate clinical condition.

Epi Update COVID-19

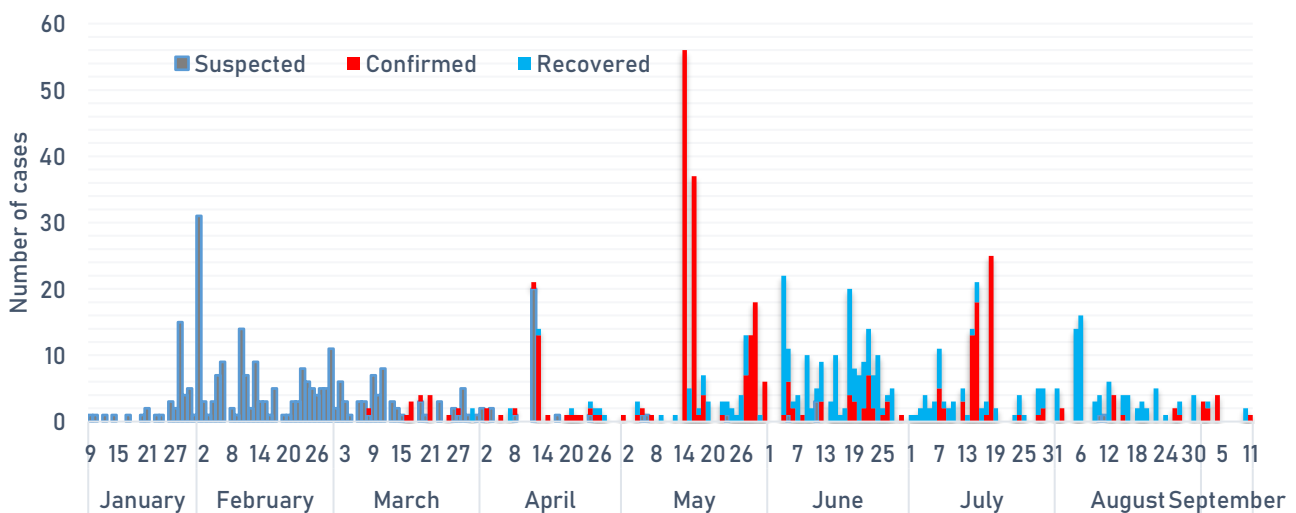
Tests	Cases	PUI	Deaths	ICU Admissions
3 892	1	3 629	0	0
Tests past 7days	New cases past 7days	(as of 11 Sep)	Deaths past 7days	ICU Admissions past 7days
(+6.3% 7-day)	(-88.8% 7-day)		(0% 7-day)	(0% 7-day)
59 208	311	22 338	0	0
Cumulative Tests	Cumulative Cases	Cumulative PUI	Cumulative Deaths	Cumulative ICU Admissions
100%		0%	0	0
Imported Cases in past 28 days (29)	Cases in past 28 days with no link (0)	Active Clusters		Active clusters with >3 generations

Epidemiology

Health Service Provision COVID-19

8 359 (As of 21 Sep)	0	1	557	9 754
Health care workers trained in COVID19 Case Management	Healthcare worker cases reported past week	Hospitals admitting COVID-19 patients	ICU beds for COVID-19 patients	Non-ICU Hospital beds for COVID19 patients

Number of suspected, confirmed and recovered cases, by date of reporting



Cumulative and new (past 7 days) cases, deaths and severity of cases

Age Group	Female		Male		Total	Severity of cases	
	Cases	Deaths	Cases	Deaths		Mild and moderate	Severe critical
<5	0 (0)	0 (0)	0 (0)	0 (0)	0	0	0
5-14	2 (0)	0 (0)	6 (0)	0 (0)	8	8	0
15-24	66(0)	0 (0)	104 (0)	0 (0)	170	170	0
25-34	11 (0)	0 (0)	62 (0)	0 (0)	73	73	0
35-44	2 (0)	0 (0)	21(0)	0 (0)	23	23	0
45-54	12 (0)	0 (0)	4 (1)	0 (0)	16	16	0
55-64	9 (0)	0 (0)	5(0)	0 (0)	14	14	0
65-74	3 (0)	0 (0)	1 (0)	0 (0)	4	4	0
75-84	3 (0)	0 (0)	0 (0)	0 (0)	3	3	0
85+	0 (0)	0 (0)	0 (0)	0 (0)	0	0	0
Total	108 (0)	0 (0)	203 (1)	0 (0)	311	310	0

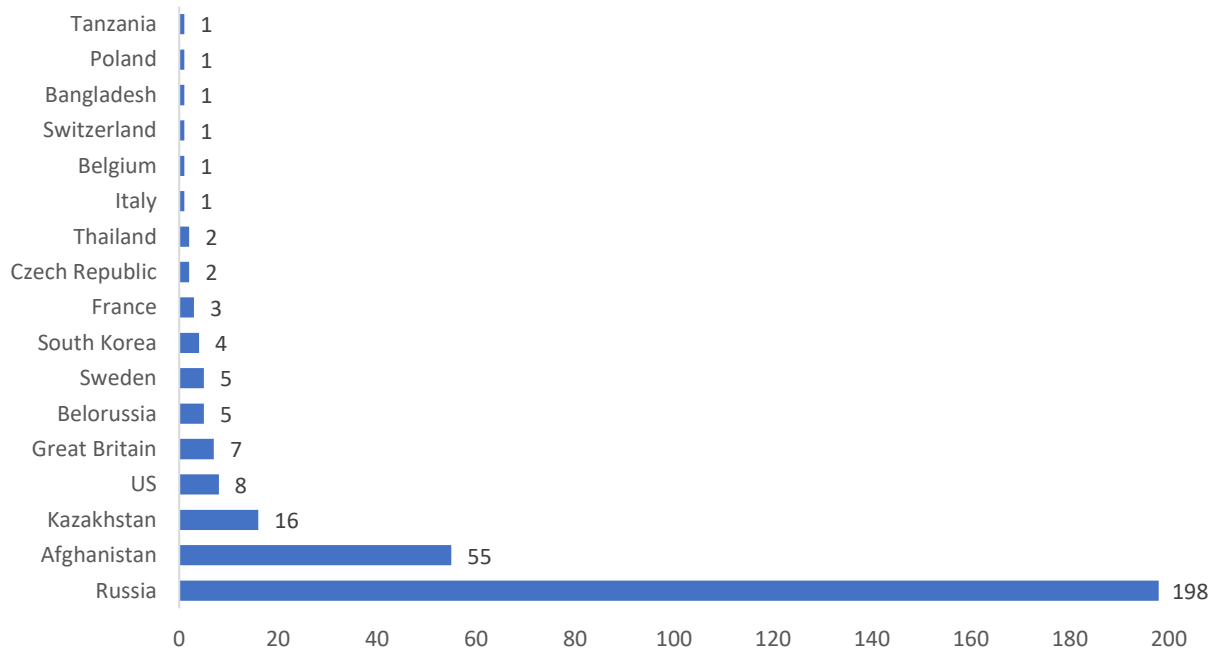
Number of confirmed cases by country of repatriation (From March 2020 to 11 September)

**31 Mongolian students repatriated from Wuhan, China on 31 January 2020*

Countries	Flight		Ground crossing		Total number of repatriated people	Total number of confirmed cases
	Number of incoming people	Number of confirmed cases	Number of repatriated people	Number of confirmed cases		
Qatar	43	0			43	0
China	31	0	381	0	412	0
Czech Republic	250	2			250	2
Australia	835	0			835	0
India	574	0			574	0
Japan	1818	0			1818	0
France	121	1			121	1
US	788	7			788	7
England	3	3			3	3
Turkey	956	4			956	4
South Korea	5504	7			5504	7
Kazakhstan	440	15			440	15
Germany	1798	13			1798	13
TIR drivers				16	0	16
Afghanistan	237	55			237	55
Russia	699	82	1858	106	2557	188
Hong Kong	408				408	0
Total	14505	189	2239	122	16744	311



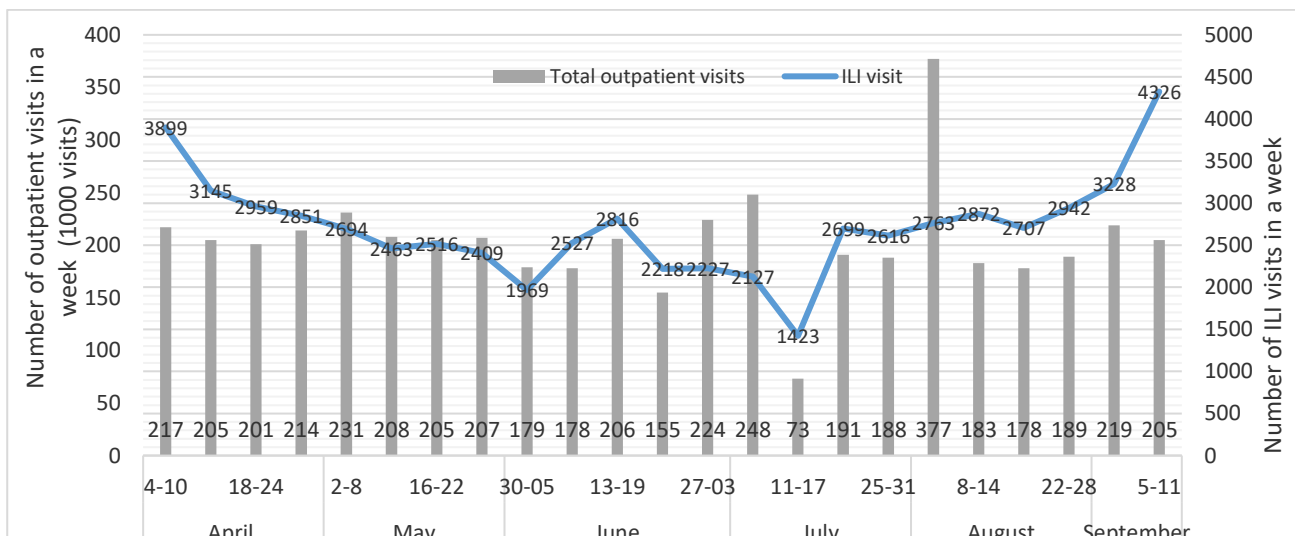
Number of confirmed cases by most likely country of exposure (total of 301 confirmed cases reported as of 11 September 2020) *



* most likely country of exposure is based on the patients' history of travel recorded on the COVID-19 confirmed case reporting form

Healthcare capacity surveillance

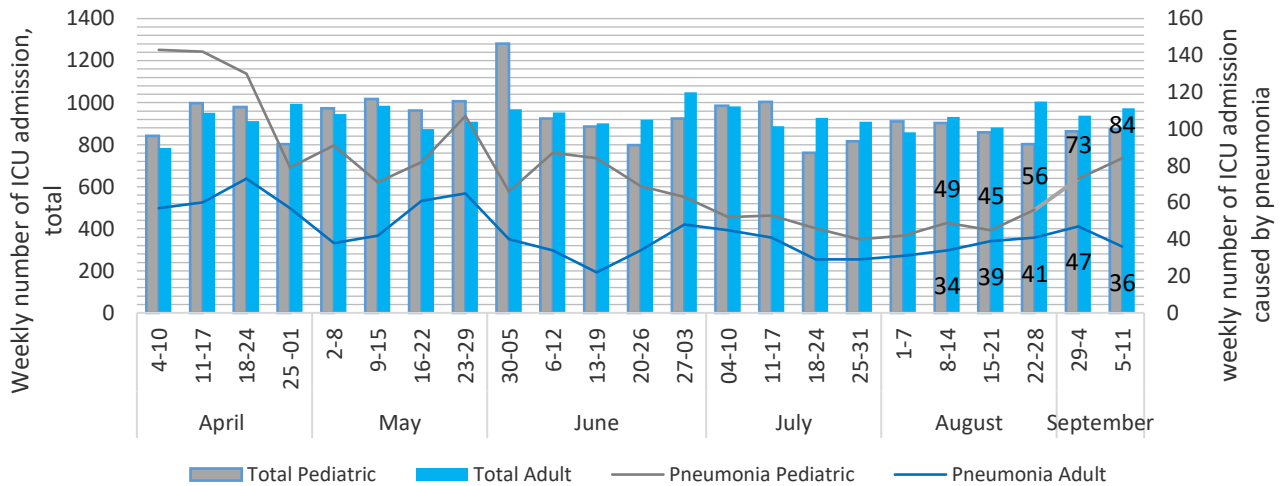
Weekly number of total outpatient visits and ILI visits



The number of ILI caused outpatient visits are steadily increasing during past 4 weeks. From 5 to 11 September, a total of 205 000 outpatient visits and 4326 ILI (influenza and inlzuenza like illness) visits registered nationwide, which it was 219000 and 3228 in previous week.



Weekly number of ICU admission (pediatric and adult patients)



Almost 2 times increase observed in pediatric ICU admission caused by pneumonia in last week, which it was only 45 a month ago.

Point of Entry surveillance

Between 6 January and 4 September, total of 359 093 people and 220 909 vehicles entered through the border of Mongolia.

Duration	Plane	Truck	Train	Car	Bus	Passenger
6 Jan- 11 September	401	237 309	5 505	1 489	227	376 237 (by air 49 605 and by ground crossing 326 632)

Mongolia-Russia border checkpoint: TIR truck driver surveillance

Duration	TIR truck	Driver			Isolated driver	SARS-CoV2 detected
		Mongolian	Foreigner	Total		
18 Mar – 11 September	4 554	1 418	3 278	4 696	171	16 (3 Mongolian, 13 foreigner); 151 drivers recovered

Strategic Approach

Strategic Approach to COVID-19 Prevention, Detection and Control

- Review and change current testing strategy and contact tracing system
 - Testing strategy for stage 1: to test all suspected cases, contacts, and repatriated people
 - Repatriated people: 3 times, on arrival, day 14 and day 21 of quarantine
 - Discharge criteria for confirmed cases: 3 negative test results taken from 5 samples (nasopharyngeal, sputum, faeces, urine, blood based on the physician indication) 24 hours apart

No	Day of sampling	Upon arrival	24-72 hours	7th day	14th day	19 th and 20 th day	Explanation
1	Repatriated people and close contact	+			+	+	The PCR test should be performed within 72 hours for repatriated people
2	Suspected case		+				
3	Probable case		+	+	+	+	All cases of pneumonia
4	Confirmed case		+	+	+	+	Additional tests can be performed as prescribed by physician

- Risk communication
 - With the support from WHO and USAID, the National Center for Public Health organized a training on 'the public engagement and phone triaging during COVID-19 community transmission on 7-11 September. Operators from the Shuurkhai-119 hotline and public health professionals from 21 provinces participated to the training.
 - MoH daily live press briefing held 302 times.
- 12 charter flights scheduled to repatriate citizens in September 2020 (updated)

Date	From
3 September	Seoul-UB
8 September	Hong-Kong (Transit)-UB
12 September	Tokyo-UB
14 September	Frankfurt-UB
15 September	Seoul-UB
17 September	Hong-Kong (Transit)-UB
18 September	Istanbul-UB
21 September	Seoul-UB
23 September	Frankfurt-UB
24 September	Seoul-UB
25 September	Sydney-UB
28 September	Seattle-UB

Non-Pharmaceutical Interventions (NPI)

- MoH is developing a mechanism to adjust long-term non-pharmaceutical intervention decision-making with multisource surveillance in all provinces. Templates and procedures for sharing Web app for real-time multisource surveillance is under development.
- The new academic year of 2020- 2021 began on 1 September nationwide. 1,475 preschools, 834 general education schools and 93 universities and colleges reopened classroom and online activities with over 1 040 000 students. Classroom activity of universities will restart from 5 October 2020.

NPI	Monitoring status					
	Date first implemented	Date last modified	Implementation		Partial lift	Lifted
			Geographical (national or sub-national)	Recommended or Required	Lifted for some area	Lifted for all areas
Wearing Face Masks, Hand Hygiene, Respiratory Etiquette	27 January		National	Required	No	No
Compulsory quarantine 14-21 days	21 February	29 April	National	Required	No	No
School Closure	27 January	7 Aug	National	Required	Yes	Yes
Closed sport clubs, religious and cultural gatherings, tourist camps, resorts and hotels	27 January	22 June	National	Required	Yes	-
Mass Gatherings	27 January	None	National	Required	No	No
Restrictions on Internal Movement (within country)	23 February	16 March	Subnational	Required	-	Yes
Restrictions on International Travel	31 January	None	National	Required	No	No

Resources:

- Multisource surveillance reports available at: www.burtgel.mohs.mn
- Daily update released by multisectoral working group at NCCD
- Weekly risk communication report released by the Emergency Operations Center of MoH
- Mongol Messenger No.36(1516), a weekly published by MONTSAME news agency
- Resolutions of the State Emergency Commission available at: <https://nema.gov.mn/c/resolution>