



## Situation Summary

- As of 21 August, 298 COVID-19 confirmed cases are recorded in Mongolia, of which 283 have recovered and 15 patients are under treatment. 13 patients undergoing treatment are in mild and 2 patients are in moderate clinical condition.
- Mongolian researchers have recently developed a diagnostic test for SARS-CoV2 antibodies. Under the supervision of academician Ts.Oyunsuren and Dr. D.Gantulga, the test was developed by a joint team of researchers from the Laboratory of Molecular Biology at the Institute of Biology of Mongolian Academy of Sciences (MAS), the Virology Laboratory of National Center for Communicable Diseases, and the Department of Biology at National University of Mongolia.
- The State Emergency Commission decided to 500 more Mongolians to bring from US and Kazakhstan. Additional chartered flights scheduled on 30 August from Nur-Sultan, Kazakhstan and on 31 August from Seattle, the U.S.

## Upcoming Events and Priorities for the next two weeks

- The decisions to integrate State Emergency Commission IMS and Health Sector IMS will be approved by Deputy Prime Minister
- The multisectoral IMS procedures and multisectoral costed disaster risk management plan for health will be updated based on the lessons learned from simulation exercise and 7-month experience and APSED III TAG recommendations
- FETP online learning modules to be developed
- FET will test online training package through 7-day deployment course
- FET graduates, frontline FET and multisectoral rapid response team will be deployed to 21 provinces and 9 districts to support incident manager and pillar leads
- Budget of the “Age stratified population based sero-epidemiology” survey and “Investigation of first cases” survey to be approved by RO.



## National Transmission Assessment

### Stage 1: Imported Cases only.

As of 21 Aug, 298 COVID-19 confirmed cases recorded in Mongolia, of which 283 have recovered and 15 patients are under treatment. 13 patients undergoing treatment are in mild and 2 patients are in moderate clinical condition.

### Epi Update COVID-19

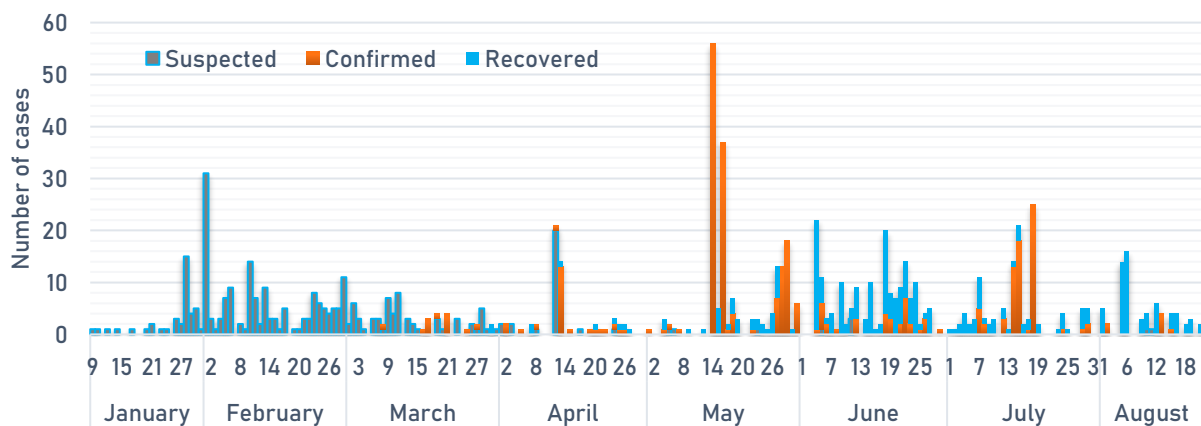
Tests	Cases	PUI	Deaths	ICU Admissions
4 508	1	3 051	0	0
Tests past 7days	New cases past 7days	(as of 21 Aug)	Deaths past 7days	ICU Admissions past 7days
(+14.5% 7-day)	(-75.0% 7-day)		(0% 7-day)	(0% 7-day)
4 8106	298	15 945	0	0
Cumulative Tests	Cumulative Cases	Cumulative PUI	Cumulative Deaths	Cumulative ICU Admissions
100%		0%	0	0
Imported Cases in past 28 days	Cases in past 28 days with no link (0)	Active Clusters		Active clusters with >3 generations
(10)				

## Epidemiology

### Health Service Provision COVID-19

8247	0	1	557	5000
Health care workers trained in COVID19 Case Management	Healthcare worker cases reported past week	Hospitals admitting COVID-19 patients	ICU beds for COVID-19 patients	Non-ICU Hospital beds for COVID19 patients

### Number of suspected, confirmed and recovered cases, by date of reporting



**Cumulative and new (past 7 days) cases, deaths and severity of cases**

Age Group	Female		Male		Total	Severity of cases	
	Cases	Deaths	Cases	Deaths		Mild and moderate	Severe critical
<5	0 (0)	0 (0)	0 (0)	0 (0)	0	0	0
5-14	2 (0)	0 (0)	6 (0)	0 (0)	8	8	0
15-24	66(0)	0 (0)	101 (0)	0 (0)	167	167	0
25-34	11 (0)	0 (0)	62 (0)	0 (0)	73	73	0
35-44	2 (0)	0 (0)	21(0)	0 (0)	23	23	0
45-54	11 (0)	0 (0)	2 (1)	0 (0)	13	13	0
55-64	4 (0)	0 (0)	5(0)	0 (0)	9	9	0
65-74	3 (0)	0 (0)	1 (0)	0 (0)	4	4	0
75-84	1 (0)	0 (0)	0 (0)	0 (0)	1	1	0
85+	0 (0)	0 (0)	0 (0)	0 (0)	0	0	0
<b>Total</b>	100 (0)	0 (0)	198 (1)	0 (0)	298	298	0

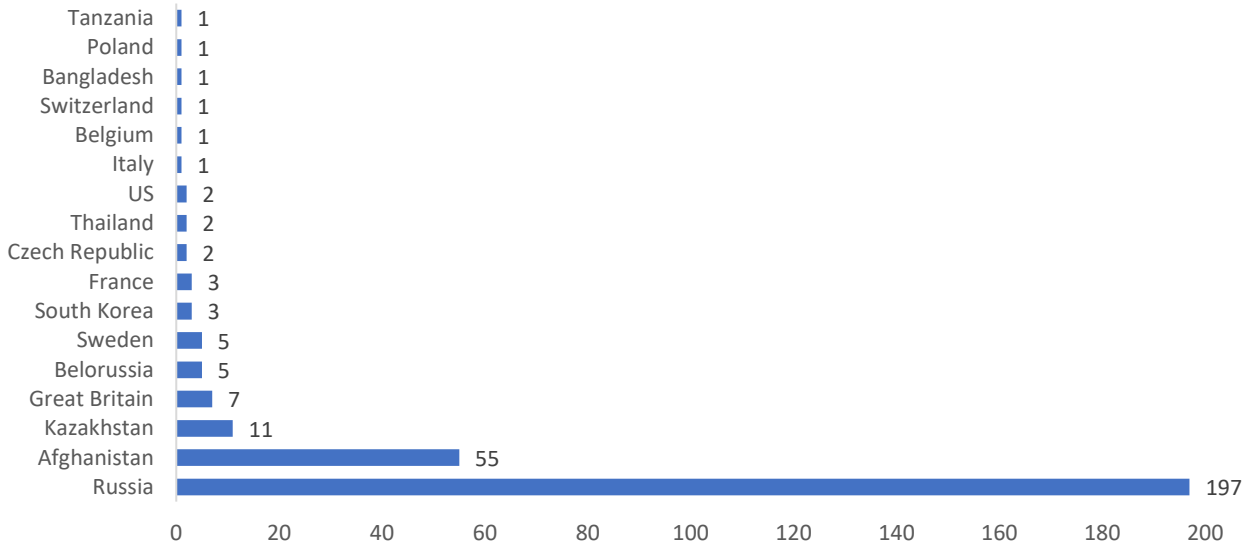
**Number of confirmed cases by country of repatriation (From March 2020 to 21 August)**

Countries	Flight		Ground crossing		Total number of repatriated people	Total number of confirmed cases
	Number of incoming people	Number of confirmed cases	Number of repatriated people	Number of confirmed cases		
Qatar	43	0			43	0
China	31	0	381	0	412	0
Czech Republic	250	2			250	2
Australia	574	0			574	0
India	574	0			574	0
Japan	1561	0			1561	0
France	121	1			121	1
US	530	1			530	1
England	3	3			3	3
Turkey	956	4			956	4
South Korea	4870	6			4870	6
Kazakhstan	175	10			175	10
Germany	1277	13			1277	13
TIR drivers				15		15
Afghanistan	237	55			237	55
Russia	699	82	1760	106	2459	188
Hong Kong	147				147	0
<b>Total</b>	11103	177	2141	121	14189	298

\*31 Mongolian students repatriated from Wuhan, China on 31 January 2020



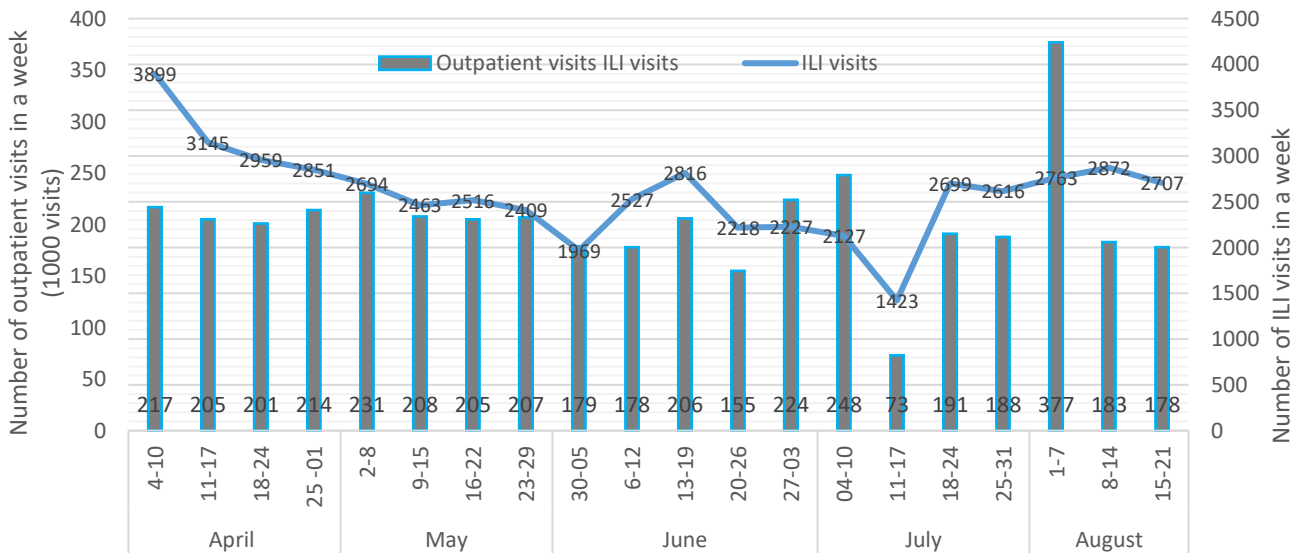
**Number of confirmed cases by most likely country of exposure (total of 293 confirmed cases reported as of 21 Aug 2020) \***



\* most likely country of exposure is based on the patients' history of travel recorded on the COVID-19 confirmed case reporting form

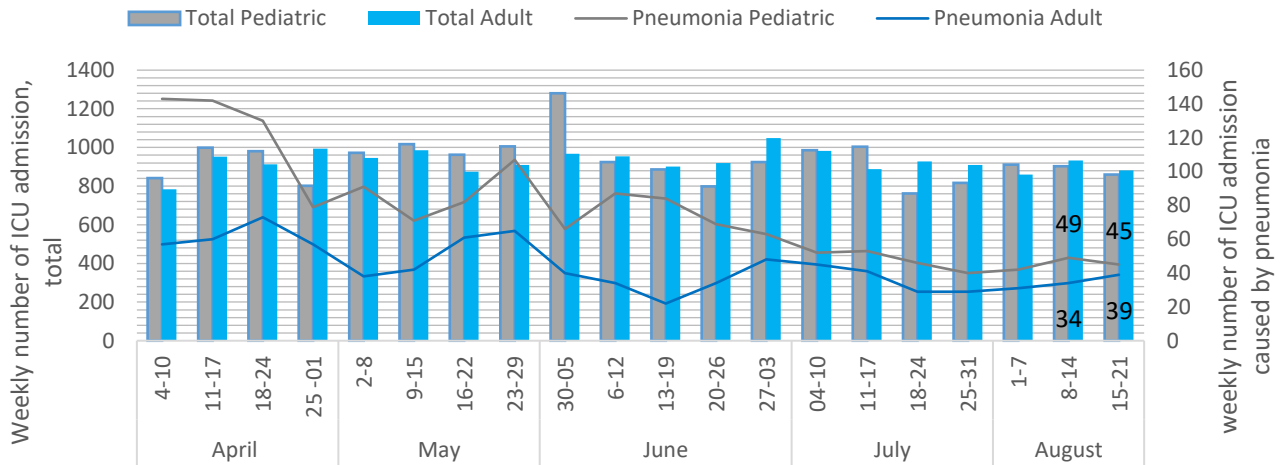
**Healthcare capacity surveillance**

**Weekly number of total outpatient visits and ILI visits**





### Weekly number of ICU admission (pediatric and adult patients)



### Point of Entry surveillance

Between 6 January and 21 August, total of 326 907 people and 189 420 vehicles entered through the border of Mongolia.

Duration	Plane	Truck	Train	Car	Bus	Passenger
6 Jan- 21 Aug	389	182 382	4 993	1 445	211	326 907 (by air 46 883 and by ground crossing 280 024)

### Mongolia-Russia border checkpoint: TIR truck driver surveillance

Duration	TIR truck	Driver			Isolated driver	SARS-CoV2 detected
		Mongolian	Foreigner	Total		
18 Mar – 21 August	3980	1261	2855	4116	162	15 (3 Mongolian, 12 foreigner); 14 drivers were recovered

## Strategic Approach

### Strategic Approach to COVID-19 Prevention, Detection and Control

- Review and change current testing strategy and contact tracing system
  - Testing strategy for stage 1: to test all suspected cases, contacts, and repatriated people
  - Repatriated people: 3 times, on arrival, day 14 and day 21 of quarantine
  - Discharge criteria for confirmed cases: 3 negative test results taken from 5 samples (nasopharyngeal, sputum, faeces, urine, blood based on the physician indication) 24 hours apart

No	Day of sampling	Upon arrival	24-72 hours	7th day	14th day	19 <sup>th</sup> and 20 <sup>th</sup> day	Explanation
1	Repatriated people and close contact	+			+	+	The PCR test should be performed within 72 hours for repatriated people
2	Suspected case		+				
3	Probable case		+	+	+	+	All cases of pneumonia
4	Confirmed case		+	+	+	+	Additional tests can be performed as prescribed by physician

- Risk communication
  - Live interviews: COVID-19 and vaccination, COVID-19 and laboratory diagnosis, COVID-19 and features of medical care for patients with chronic kidney disease.
- MoH daily live press briefing held 281 times

Started time	Activities	Outputs
20 January	281 times daily press briefing	18 325 100 views and 91 150 shares
January	307 infographics, 18 videos, 71 types recommendations and 203 specific recommendations of specialists	17 557 500 views and 260 200 shares.
10 March	24/7 Hotlines	39 830 calls
10 March	Facebook Messenger chat-bot	575 messages
-	Research and paper review of COVID-19	37 reviews posted
-	Published documents	505,000
20 March	COVID-19 situation updates (dashboard) for public	49 099 views
5 May	"Shuurkhai 119" mobile application for COVID-19 related FAQs and for directed call to hotlines	32 313 calls 8648 directed calls
-	Public messages delivered through TV, radio, newspapers, social media (Fb, twitter), SMS, 5 public LED screens in UB city	-

## Best Practice / Lessons Learned

- The Fifth World Conference of Speakers of Parliament was held virtually by the Inter-Parliament Union (IPU) in cooperation with the Parliament of Austria and the United Nations on 19-20 August. Mongolian Parliament members led by the Speaker participated in the opening ceremony. More than 250 participants including UN



representatives and over 150 speakers, members and specialists of the parliaments have been invited to the conference aiming to strengthen international parliamentary cooperation in the fight against the COVID-19 pandemic and climate and economic crisis facing humanity.

- Global Energy Interconnection Development Organization has donated 30,000 face masks to Mongolia.
- Japan International Cooperation Agency (JICA) and UB Governor Office are cooperating on the waste management during COVID-19 on 14 August. This project aims to conduct a series of training for health care workers who are working in the field and to raise awareness of business entities as well as UB citizens.
- With the non-refundable assistance provided by the UN, the Ministry of Education and Science and the UN are implementing a joint program on “Strengthening the national capacity to suppress transmission and maintain essential services in the COVID-19 pandemic in Mongolia”. The program consists from the 4 components: 1. To create e-learning with high quality methodologies, gender sensitive contents and assessment and accessible to all children; 2. Establish an e-learning system and technology to make the core curriculum accessible to all children; 3. Incorporate e-learning into Mongolia's education policy and regulatory framework and improve it; 4. Provide additional training materials for the children of remote herders who are lagging behind, children with disabilities, ethnic minorities and low-income families

- Repatriation schedule, August 2020

Date	From	Number of passengers
01 Aug	Seoul-UB	252
05 Aug	Seattle-UB	252
06 Aug	New Deli -UB	252
07 Aug	Tokyo -UB	252
08 Aug	Frankfurt -UB	252
10 Aug	Prague-UB	250
14 Aug	Seoul-UB	250
15 Aug	Seoul/transit-UB	267
21 Aug	Istanbul-UB	265
20 Aug	Hong Kong-UB	147
22 Aug	Frankfurt-UB	260
22 Aug	Seoul-UB	250
24 Aug	Tokyo-UB	250
26 Aug	Frankfurt-UB	250
27 Aug	Sydney-UB	250
30 Aug	Nur Sultan-UB	250
31 Aug	Seattle-UB	250

- Response adjustments
  - Extend heightened level of preparedness until 31 August 2020

- Re-open children’s entertainment playground, pubs, worship places, temples, cultural venues and other places of public entertainment except for public sports events, demonstrations, PC game places and nightclubs
- The cabinet decided to reopen schools and kindergartens from 1 Sep 2020.
- At the regular meeting 19 Aug, the cabinet decided after backing the financial agreement to be established between Mongolia and the International Development Association, the cabinet to discuss about the agreement with corresponding Parliamentary Standing Committees. The agreement is aimed to promote employment and small businesses and overcoming challenges caused by COVID-19 pandemic in Mongolia.

### Non-Pharmaceutical Interventions (NPI)

- MoH is developing a mechanism to adjust long-term non-pharmaceutical intervention decision-making with multisource surveillance in all provinces. Templates and procedures for sharing Web app for real-time multisource surveillance is under development.

NPI	Monitoring status					
	Date first implemented	Date last modified	Implementation		Partial lift	Lifted
			Geographical (national or sub-national)	Recommended or Required	Lifted for some area	Lifted for all areas
Wearing Face Masks, Hand Hygiene, Respiratory Etiquette	27 January		National	Required	No	No
Compulsory quarantine 14-21 days	21 February	29 April	National	Required	No	No
School Closure	27 January	7 Aug	National	Required	Yes	No
Closed sport clubs, religious and cultural gatherings, tourist camps, resorts and hotels	27 January	22 June	National	Required	Yes	-
Mass Gatherings	27 January	None	National	Required	No	No
Restrictions on Internal Movement (within country)	23 February	16 March	Subnational	Required	-	Yes
Restrictions on International Travel	31 January	None	National	Required	No	No

#### Resources:



- Multisource surveillance reports available at: [www.burtgel.mohs.mn](http://www.burtgel.mohs.mn)
- Daily update released by multisectoral working group at NCCD
- Weekly risk communication report released by the Emergency Operations Center of MoH
- Mongol Messenger No.33(1513), a weekly published by MONTSAME news agency
- Resolutions of the State Emergency Commission available at:  
<https://nema.gov.mn/c/resolution>