



Situation Summary

- As of 28 August, 301 COVID-19 confirmed cases are reported in Mongolia, of which 291 have recovered and 10 patients are under treatment. 9 patients undergoing treatment are in mild and one patient is in moderate clinical condition.
- The heightened state of readiness for disaster protection amid COVID-19 pandemic extended until 15 September 2020.
- As of August 27, Mongolia has repatriated its 19,437 citizens from 52 overseas countries since the outbreak of the global pandemic. So far, 12,461 citizens have submitted their requests to return home from 53 countries.
- According to the results of a large-scale survey on COVID-19 impacts on Socio- Economic Situation in Mongolia conducted by UNRC office, the impact of the pandemic is very strong in Mongolia, and it is expected to continue for 2-3 years in the future.
- Extracorporeal membrane oxygenation (ECMO) apparatus has been installed at the State Central First Hospital funded by the State Emergency Commission.
- Multisectoral WG to develop online learning tools and curriculum approved by Deputy Prime Minister On 25 Aug
- IMS teams re-established at the provincial DoH, procedures drafted, and priority activities defined in Selenge province jointly with WHO

Upcoming Events and Priorities for the next two weeks

- Multisectoral EOC IMS procedures will be approved by Deputy Prime Minister
- The multisectoral IMS procedures and multisectoral costed disaster risk management plan for health will be updated based on the lessons learned from simulation exercise and 7-month experience and APSED III TAG recommendations
- FET will conduct ToT training for FET and 21 provinces pillar leads and incident managers through 7-day deployment course
- Workshop to establish National RCCE network will be held on 3 Sep 2020
- NCCD long-term strategic plan will be introduced to MoH staff
- WG to draft Public Health Emergency Law to be approved
- Multisource surveillance application along with technical specifications to be approved by Deputy Prime Minister
- Regional training to assist in the establishment of provincial IMST and training of incident managers and IMS teams will be in central, northern, western, southern and eastern regions in Sep-October



National Transmission Assessment

Stage 1: Imported Cases only.

As of 28 August, 301 COVID-19 confirmed cases are reported in Mongolia, of which 291 have recovered and 10 patients are under treatment. 9 patients undergoing treatment are in mild and one patient is in moderate clinical condition.

Epi Update COVID-19

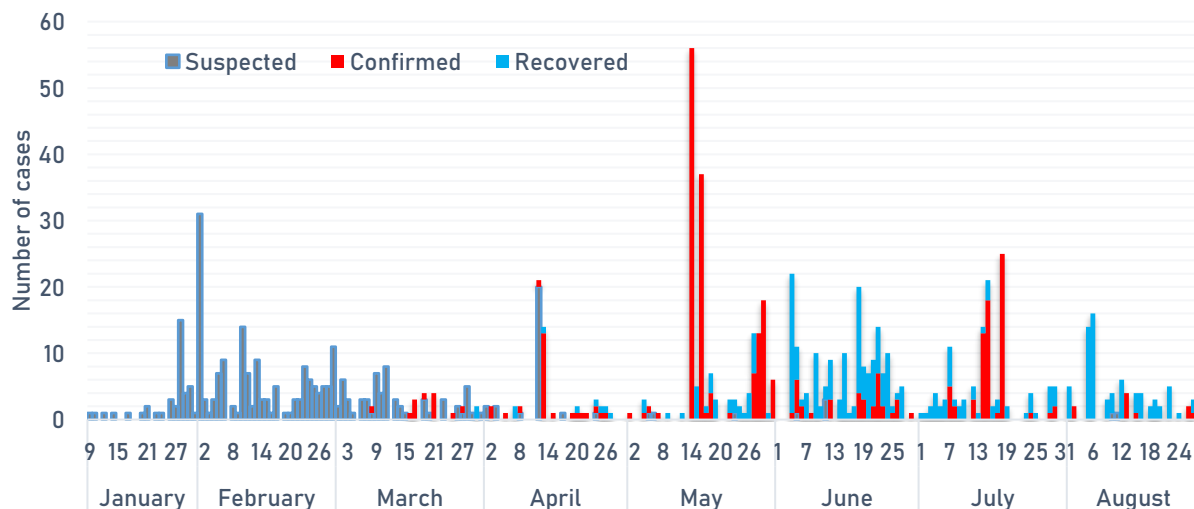
Tests	Cases	PUI	Deaths	ICU Admissions
4 101	3	3 755	0	0
Tests past 7days	New cases past 7days	(as of 28 Aug)	Deaths past 7days	ICU Admissions past 7days
(+9.9% 7-day)	(+200.0% 7-day)		(0% 7-day)	(0% 7-day)
51 655	301	20 538	0	0
Cumulative Tests	Cumulative Cases	Cumulative PUI	Cumulative Deaths	Cumulative ICU Admissions
100%		0%	0	0
Imported Cases in past 28 days (10)	Cases in past 28 days with no link (0)		Active Clusters	Active clusters with >3 generations

Epidemiology

Health Service Provision COVID-19

8247 (As of 14 Aug)	0	1	557	9 754
Health care workers trained in COVID19 Case Management	Healthcare worker cases reported past week	Hospitals admitting COVID-19 patients	ICU beds for COVID-19 patients	Non-ICU Hospital beds for COVID19 patients

Number of suspected, confirmed and recovered cases, by date of reporting



Cumulative and new (past 7 days) cases, deaths and severity of cases

Age Group	Female		Male		Total	Severity of cases	
	Cases	Deaths	Cases	Deaths		Mild and moderate	Severe critical
<5	0 (0)	0 (0)	0 (0)	0 (0)	0	0	0
5-14	2 (0)	0 (0)	6 (0)	0 (0)	8	8	0
15-24	66(0)	0 (0)	103 (2)	0 (0)	169	169	0
25-34	11 (0)	0 (0)	62 (0)	0 (0)	73	73	0
35-44	2 (0)	0 (0)	21(0)	0 (0)	23	23	0
45-54	12 (1)	0 (0)	2 (0)	0 (0)	14	14	0
55-64	4 (0)	0 (0)	5(0)	0 (0)	9	9	0
65-74	3 (0)	0 (0)	1 (0)	0 (0)	4	4	0
75-84	1 (0)	0 (0)	0 (0)	0 (0)	1	1	0
85+	0 (0)	0 (0)	0 (0)	0 (0)	0	0	0
Total	101 (1)	0 (0)	200 (2)	0 (0)	301	301	0

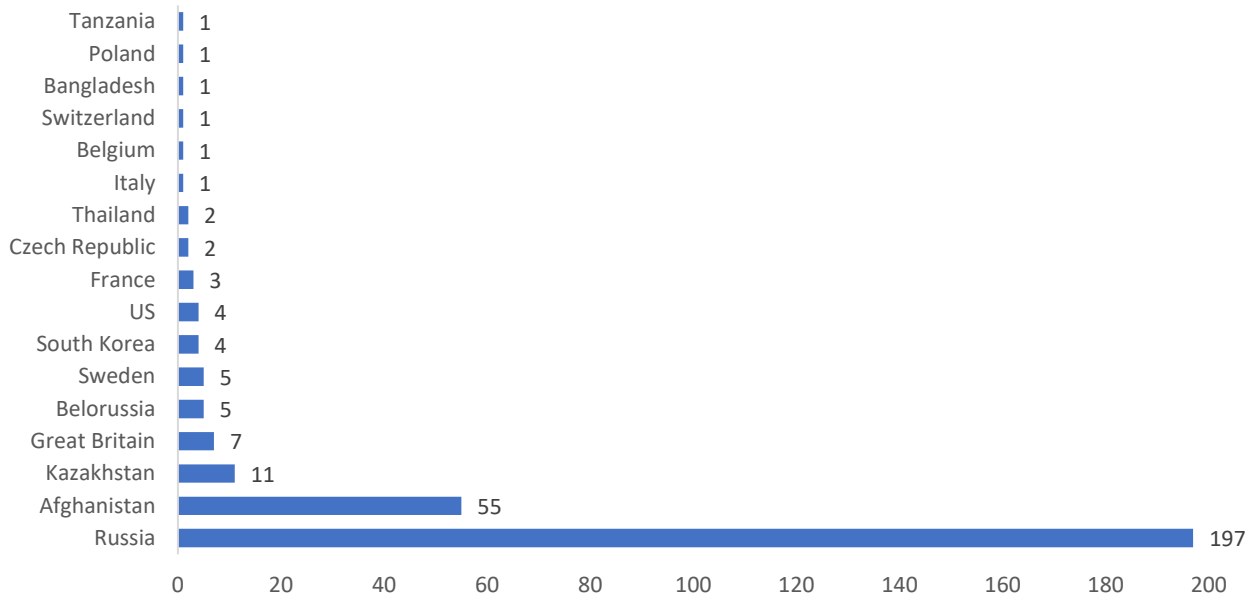
Number of confirmed cases by country of repatriation (From March 2020 to 28 August)

**31 Mongolian students repatriated from Wuhan, China on 31 January 2020*

Countries	Flight		Ground crossing		Total number of repatriated people	Total number of confirmed cases
	Number of incoming people	Number of confirmed cases	Number of repatriated people	Number of confirmed cases		
Qatar	43	0			43	0
China	31	0	381	0	412	0
Czech Republic	250	2			250	2
Australia	835	0			835	0
India	574	0			574	0
Japan	1818	0			1818	0
France	121	1			121	1
US	534	3			534	3
England	3	3			3	3
Turkey	956	4			956	4
South Korea	5238	7			5238	7
Kazakhstan	440	10			440	10
Germany	1798	13			1798	13
TIR drivers				15	-	15
Afghanistan	237	55			237	55
Russia	699	82	1760	106	2459	188
Hong Kong	147				147	0
Total	13724	180	2141	121	15865	301



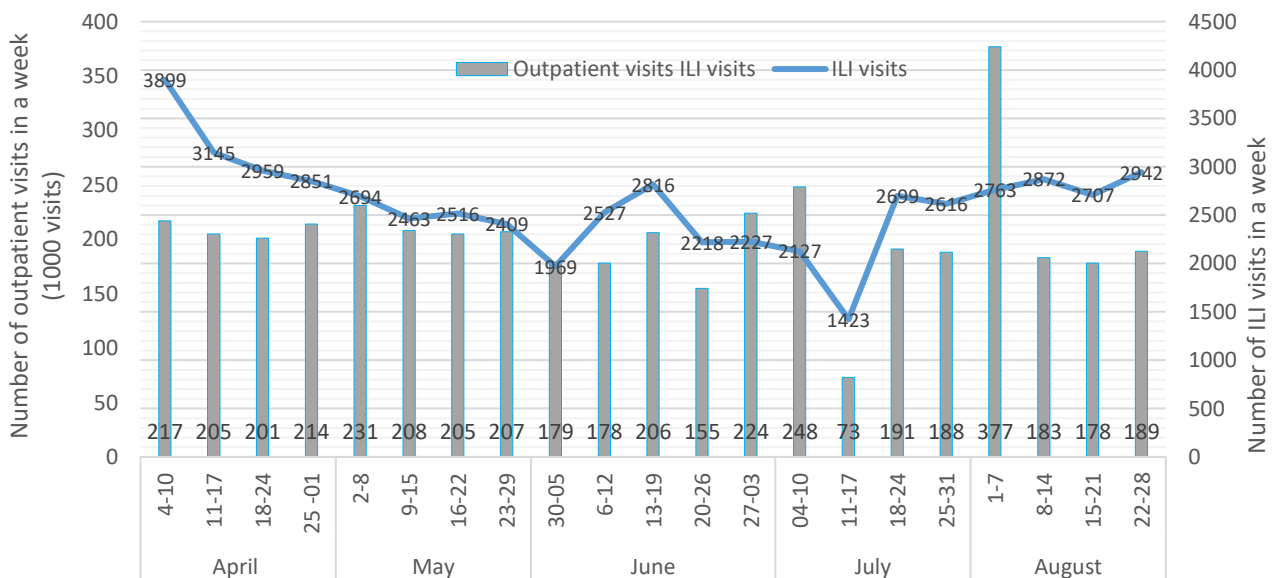
Number of confirmed cases by most likely country of exposure (total of 301 confirmed cases reported as of 28 Aug 2020) *



* most likely country of exposure is based on the patients' history of travel recorded on the COVID-19 confirmed case reporting form

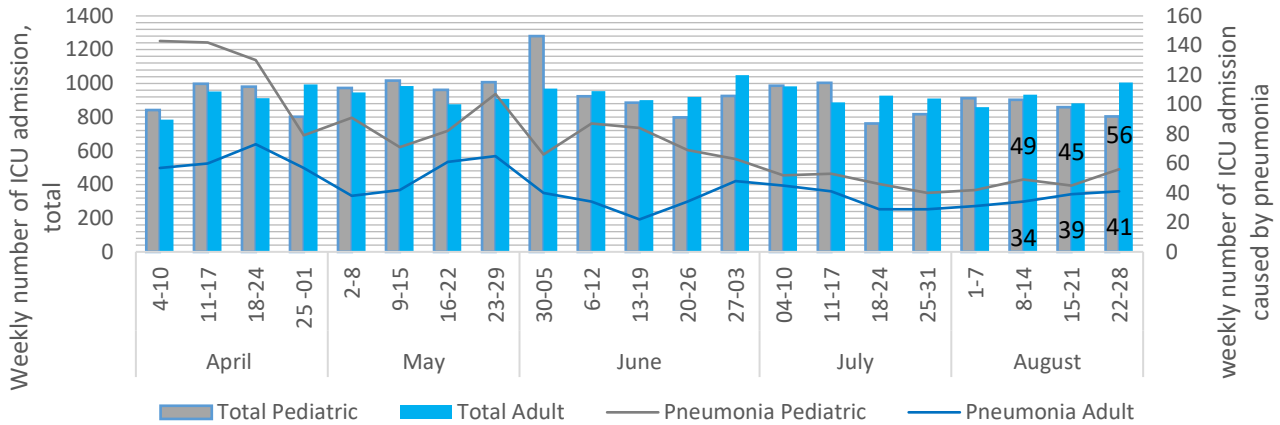
Healthcare capacity surveillance

Weekly number of total outpatient visits and ILI visits





Weekly number of ICU admission (pediatric and adult patients)



Point of Entry surveillance

Between 6 January and 28 August, total of 345 911 people and 206 460 vehicles entered through the border of Mongolia.

Duration	Plane	Truck	Train	Car	Bus	Passenger
6 Jan- 28 Aug	396	199 218	5172	1461	213	345 911 (by air 48 298 and by ground crossing 297 613)

Mongolia-Russia border checkpoint: TIR truck driver surveillance

Duration	TIR truck	Driver			Isolated driver	SARS-CoV2 detected
		Mongolian	Foreigner	Total		
18 Mar – 28 Aug	4183	1323	2997	4320	164	15 (3 Mongolian, 12 foreigner); 14 drivers were recovered

Strategic Approach

Strategic Approach to COVID-19 Prevention, Detection and Control

- Review and change current testing strategy and contact tracing system
 - Testing strategy for stage 1: to test all suspected cases, contacts, and repatriated people
 - Repatriated people: 3 times, on arrival, day 14 and day 21 of quarantine
 - Discharge criteria for confirmed cases: 3 negative test results taken from 5 samples (nasopharyngeal, sputum, faeces, urine, blood based on the physician indication) 24 hours apart

No	Day of sampling	Upon arrival	24-72 hours	7th day	14th day	19 th and 20 th day	Explanation
1	Repatriated people and close contact	+			+	+	The PCR test should be performed within 72 hours for repatriated people
2	Suspected case		+				
3	Probable case		+	+	+	+	All cases of pneumonia
4	Confirmed case		+	+	+	+	Additional tests can be performed as prescribed by physician

- Risk communication
 - Live interviews: COVID-19 and vaccination, COVID-19 and laboratory diagnosis, COVID-19 and features of medical care for patients with chronic kidney disease.
- MoH daily live press briefing held 288 times

Started time	Activities	Outputs
20 January	288 times daily press briefing	19 347 600 views and 91 600 shares
January	314 infographics, 18 videos, 71 types recommendations and 203 specific recommendations of specialists	18 257 700 views and 260 300 shares.
10 March	24/7 Hotlines	41 809 calls
10 March	Facebook Messenger chat-bot	575 messages
-	Research and paper review of COVID-19	38 reviews posted
-	Published documents	505,000
20 March	COVID-19 situation updates (dashboard) for public	49 099 views
5 May	"Shuurkhai 119" mobile application for COVID-19 related FAQs and for directed call to hotlines	8859 directed calls
-	Public messages delivered through TV, radio, newspapers, social media (Fb, twitter), SMS, 5 public LED screens in UB city	-



Best Practice / Lessons Learned

- The Cabinet decided to extend the heightened state of readiness for disaster protection amid COVID-19 pandemic until 15 September 2020.
- The draft resolution on 'Approval of strategy to reduce loan interest rates' presented to the Speaker of the Parliament. The draft reflects detailed measures on creating a stable macroeconomic environment, reducing loan risks and costs, verifying the right to demand for those involved in loan agreements, urgently providing performance of duties, and reducing the work costs of bank and financial institutions.
- As of August 27, Mongolia has repatriated its 19,437 citizens from 52 overseas countries since the outbreak of the global pandemic. So far, 12,461 citizens have submitted their requests to return home from 53 countries.
- According to the results of a large-scale survey on COVID-19 impacts on Socio- Economic Situation in Mongolia conducted by UNRC office, the impact of the pandemic is very strong in Mongolia, and it is expected to continue for 2-3 years in the future. 10.7 percent drop in economy was mainly affected by 30 percent decrease in growth of mining sector, which makes up 24 percent of GDP.

- 12 charter flights scheduled to repatriate citizens in September 2020

Date	From
3 September	Seoul-UB
8 September	Hong-Kong (Transit)-UB
9 September	Tokyo-UB
14 September	Frankfurt-UB
15 September	Seoul-UB
17 September	Hong-Kong (Transit)-UB
18 September	Istanbul-UB
21 September	Tokyo-UB
23 September	Frankfurt-UB
24 September	Seoul-UB
25 September	Sydney-UB
28 September	Seattle-UB

-
- Response adjustments
 - Extend heightened level of preparedness until 15 September 2020
 - The cabinet decided to reopen schools and kindergartens from 1 Sep 2020. Specific measures have been taken by government to ensure social distancing. Measures include: to decrease number of children per class, to blend 3 days of class training with 2 days of online training; 4 to 5-year-olds to attend kindergarten and 2 to 3-year-olds to attend homecare service.

Non-Pharmaceutical Interventions (NPI)

- MoH is developing a mechanism to adjust long-term non-pharmaceutical intervention decision-making with multisource surveillance in all provinces. Templates and procedures for sharing Web app for real-time multisource surveillance is under development.

NPI	Monitoring status					
	Date first implemented	Date last modified	Implementation		Partial lift	Lifted
			Geographical (national or sub-national)	Recommended or Required	Lifted for some area	Lifted for all areas
Wearing Face Masks, Hand Hygiene, Respiratory Etiquette	27 January		National	Required	No	No
Compulsory quarantine 14-21 days	21 February	29 April	National	Required	No	No
School Closure	27 January	7 Aug	National	Required	Yes	Yes
Closed sport clubs, religious and cultural gatherings, tourist camps, resorts and hotels	27 January	22 June	National	Required	Yes	-
Mass Gatherings	27 January	None	National	Required	No	No
Restrictions on Internal Movement (within country)	23 February	16 March	Subnational	Required	-	Yes
Restrictions on International Travel	31 January	None	National	Required	No	No

Resources:

- Multisource surveillance reports available at: www.burtgel.mohs.mn
- Daily update released by multisectoral working group at NCCD
- Weekly risk communication report released by the Emergency Operations Center of MoH
- Mongol Messenger No.34(1514), a weekly published by MONTSAME news agency
- Resolutions of the State Emergency Commission available at: <https://nema.gov.mn/c/resolution>