



Situation Summary

- As of 22 November 2020, a total of 629 COVID-19 confirmed cases are reported in Mongolia, of which 282 patients are under treatment. Two hundred thirty-eight patients undergoing treatment are in mild, 41 patients are in moderate and 3 patients are in severe clinical condition.
- As of 22 November 2020, clusters of cases reported in Ulaanbaatar city, Selenge, Dornogovi, Gobisumber, Orkhon, Darkhan-Uul provinces.
- A total of 18 places have been set up to offer voluntary COVID-19 rapid and PCR tests in Ulaanbaatar city.
- Rapid response teams to conduct extended contact tracing and opportunistic laboratory and epidemiologic surveillance were deployed to Selenge, Darkhan-Uul, Orkhon, Dornogobi, and Bayan-Ulgii provinces.
- Expanding detection capacity using ILI sentinel sites increasing numbers of ILI sentinel sites.
- Monthly salary incentive for 14,809 frontline responders worth total 13 billion MNT.
- Nationwide lockdown in place from 11 November until 1 December 2020.
- During this strict restriction, only essential services including food stores and supermarkets, gas stations, hospitals, pharmacies, power stations, communications and media, and funeral services are operating in normal regime.
- Total of 238 homeless people in Ulaanbaatar city have been tested and sent to nursery homes and NGOs.
- Charter flights suspended
- 67000 Ag RDT used as of 22 November 2020
- COVID-19 test result-based repatriation of citizens locked in rural areas and in Ulaanbaatar is planned.
- Fifteenth Multisectoral Risk assessment conducted on 22 November 2020. The risk assessment resulted that the level of further transmission is high. Multisectoral team has recommended to extend level III alert for another 2 weeks, set up early detection in soums and family health centers, active surveillance in high risk settings, conduct mass detection in high risk district zones, adjust public health and social measures to situational level 2, regulate export businesses, and increase number of quarantine facilities.
- National and subnational transmission assessment are being conducted regularly to facilitate stage-specific and timely response.
- Regarding traffic movement, QR system for vehicles will be used officially from Monday 23 November 2020.

Upcoming events

- Enhancing early detection of COVID-19 infection during the winter in Mongolia by strengthening the COVID-19 testing strategy to be approved by health ministerial order.
- Contact tracing, active surveillance, information sharing and care pathway procedures to be approved by Minister of Health and Deputy Prime Minister.

National Transmission Assessment

Stage 2: Local transmission

- As of 22 November 2020, a total of 629 COVID-19 confirmed cases are reported in Mongolia, of which 282 patients are under treatment. Two hundred thirty-eight patients undergoing treatment are in mild, 41 patients are in moderate and 3 patients are in severe clinical condition.
 - Imported cases 377
 - Quarantine facility 49
 - Health care workers 10
 - UB city cluster 40
 - Darkhan-Uul 20
 - Orkhon 17
 - Selenge 98
 - Gobisumber 1
 - Dornogobi 17

Indicator	Observed indicator	Alternative Explanations	Conclusion
Trend for cases	A total of 629 cases, 252 community cases and cluster of them reported.	Targeted testing which includes all repatriated people, frontline HCWs, close contacts and ILI/SARI surveillance samples	Stage 2, low confidence Border closure measure is still valid. All repatriated people and TIR truck drivers mandatory isolated in observation facilities and tested by PCR 2-3 times in observation period.
Positivity Rate and Testing Capacity	Increase in daily positivity rate from 1.7% to 3.6%. Expanding number of laboratories in provinces	Targeted testing which includes all repatriated people, frontline HCWs, close contacts and SARI surveillance samples	ILI/SARI surveillance is collecting and testing from SARI sentinel samples from units. And it is expanding from 150 to over 300.
Proportion of imported cases	Imported cases, health care workers and community cluster are reported.	Mandatory isolation in observation facilities and PCR testing of all repatriated people and close contacts	Close contacts are quarantined.
Number of exported cases	No reports of exported cases	Some countries do not publish the origin of exported cases	Secondary contacts are notified and recommended home quarantine.
Health system capacity reports	No cases admitted to ICU and on ventilator support.	Daily reports of all HCFs from all level	
Event-based surveillance	No reports of PPE and HCW shortages No reports of hospital overwhelmed	MoH RC team and NCPH have been working to monitor media reports	



- Following the incident, multisectoral rapid risk assessment composed from NCCD, General Agency for State Inspection, Border protection agency, National Emergency Management Agency, Police, Intelligence agency, WHO conducted on 11 November 2020. The risk of COVID-19 community transmission assessed as very high. Resulting the risk assessment, multisectoral team recommended following immediate actions:
 - Identify, test and quarantine and monitor close contacts
 - Increase number of ILI/SARI sentinel sites with COVID testing
 - Impose a 72-hour home quarantine in the Ulaanbaatar until the results of the close contacts laboratory test are finalized
 - 14-day home observation for exposed people
 - Provide public with timely information from official sources

Epi Update COVID-19

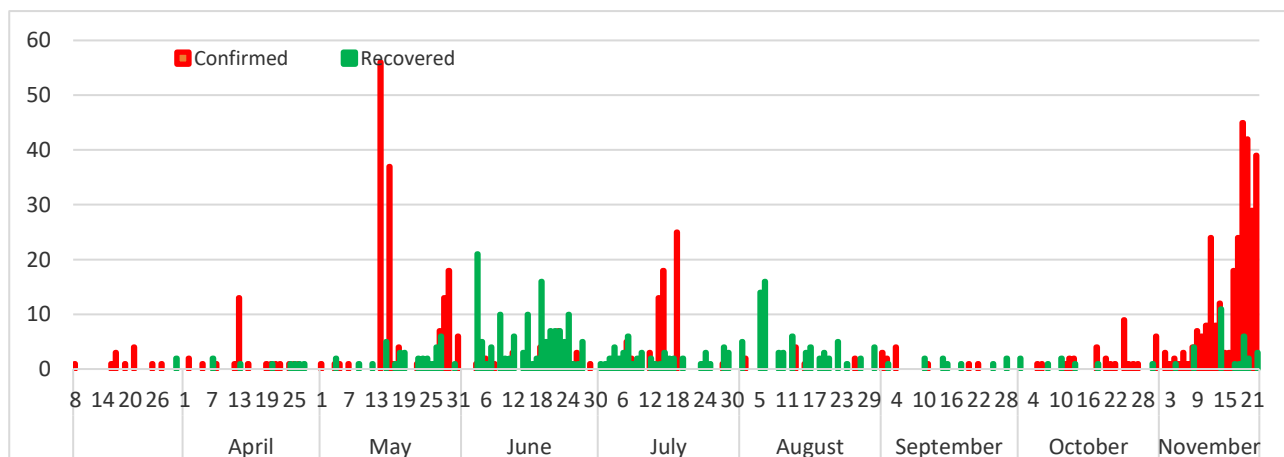
Tests	Cases	PUI	Deaths	ICU Admissions
14 608	201	2 792	0	0
NAT Tests past 7 days (+302% 7-day)	New cases past 7 days (+300% 7-day)	(as of 15 November)	Deaths past 7 days (0% 7-day)	ICU Admissions past 7 days (0% 7-day)
113 004	629	29 271*	0	0
Cumulative NAT Tests	Cumulative Cases	Cumulative PUI	Cumulative Deaths	Cumulative ICU Admissions
100%		0%	5	0
Imported Cases in past 28 days (39)	Cases in past 28 days with no link (0)	Active Clusters	Active clusters with >3 generations	

Health Service Provision COVID-19

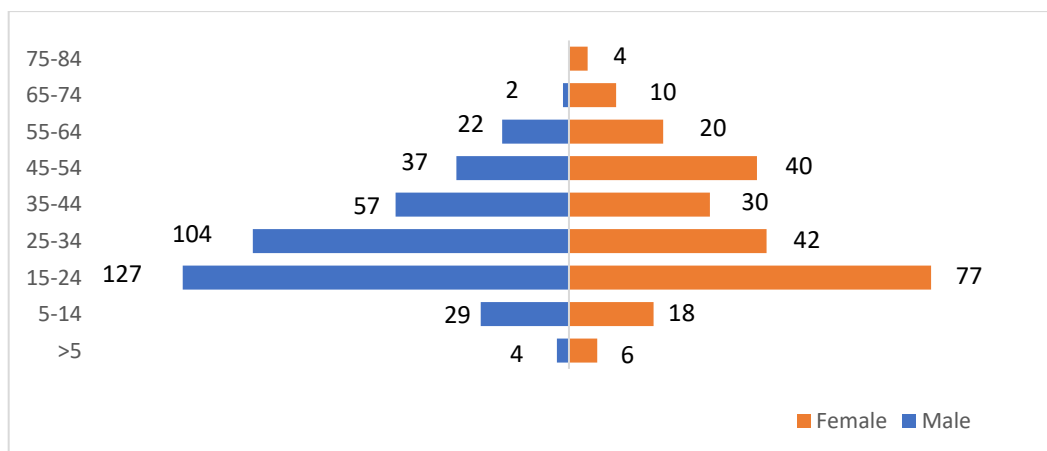
17 990 (As of 25 Sep)	6	1	2 789	33 327
Health care workers trained in COVID-19 Case Management	Healthcare worker cases reported past week	Hospitals admitting COVID-19 patients	ICU beds for COVID-19 patients	Non-ICU Hospital beds for COVID19 patients

*The cumulative number of people under observation is gathered from NEMA statistics

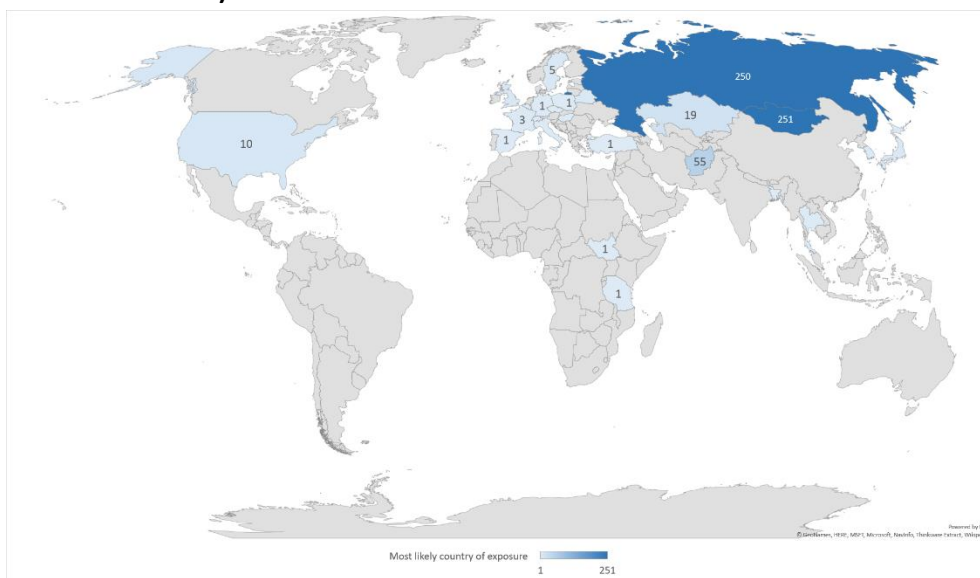
Number of confirmed and recovered cases by date of reporting



Age and gender distribution of confirmed cases (n=629)

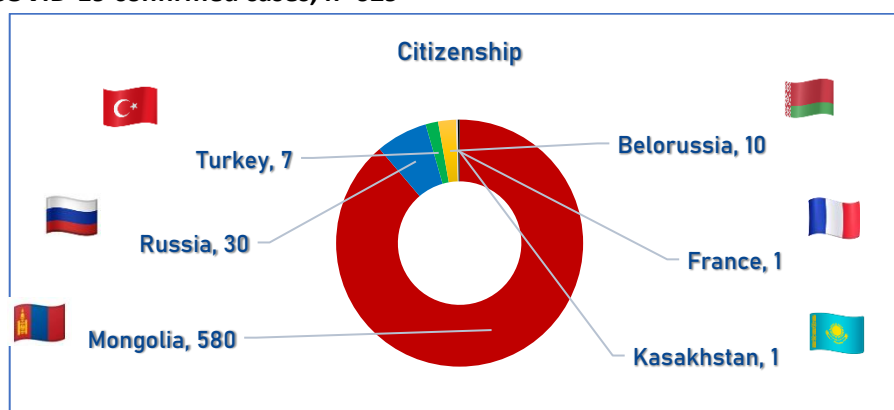


Number of confirmed cases by most likely country of exposure (total of 629 confirmed cases reported as of 10 p.m. 22 November 2020) *



* most likely country of exposure is based on the patients' history of travel recorded on the COVID-19 confirmed case reporting form

Nationality of COVID-19 confirmed cases, n=629



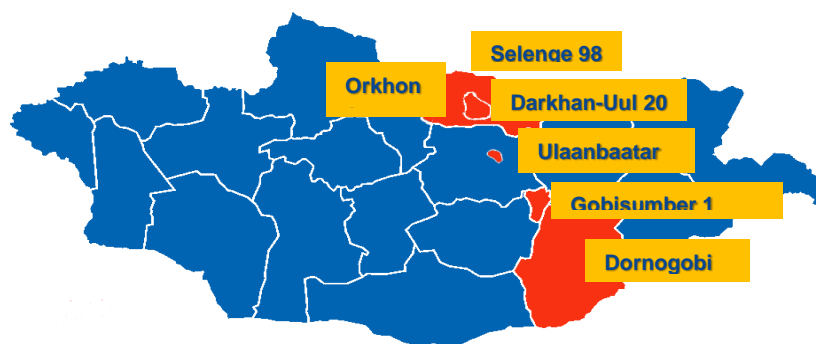
COVID-19 Subnational transmission assessment (22 November 2020)

Provinces	Number of reported clusters	Number of active clusters	Number of clusters with unknown link	Number of localized cases (total)	SARI trend (46 th week)	Stage of transmission
Arkhangai	0	0	0	0	-3	0
Bayan-Ulgii	0	0	0	0	-	0
Bayankhongor	0	0	0	0	-11	0
Bulgan	0	0	0	0	0	0
Gobi-Altai	0	0	0	0	+1	0
Gobisumber	1	1	0	1	+1	2
Darkhan-Uul	1	1	0	20	-6	2
Dornogobi	1	1	0	17	-3	2
Dornod	0	0	0	0	+5	0
Dundgobi	0	0	0	0	+2	0
Zavkhan	0	0	0	0	-10	0
Orkhon	1	1	0	17	+5	2
Uvurkhangai	0	0	0	0	-4	0
Umnugobi	0	0	0	0	-5	0
Sukhbaatar	0	0	0	0	-8	0
Selenge	1	3	0	98	+2	2
Tuv	0	0	0	0	-4	0
Uvs	0	0	0	0	-6	0
Khovd	0	0	0	0	-1	0
Khuvsgul	0	0	0	0	+5	0
Khentii	0	0	0	0	+18	0
Ulaanbaatar	6	2	0	52		2
Baganuur	0	0		1	+6	0
Bayanzurkh	1	1	0	0	-422	0
Bayangol	1	1	0	3	-	0
Nalaikh	0	0		0	+1	0
Songinokhairkhan	1	1	0	0	0	0
Sukhbaatar	1	1	0	0	-	0
Chingeltei	0	0		0	0	0
Khan-Uul	0	0		0	-	0
Bagakhangai	0	0		0	-	0
Total	11	11	0	205	-	

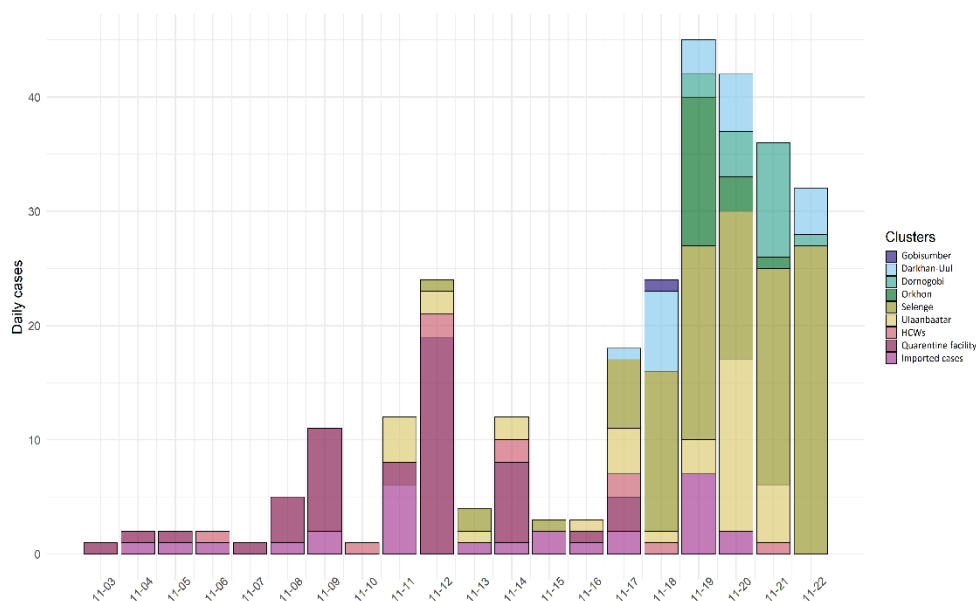
Attack rate, by local clusters

No	Location/cluster	Number of reported cases	Last confirmed date	AR%
1	HCW in NCCD	10	Nov 21	
2	Quarantine facility	49	Nov 17	39.5
3	UB family cluster	33	Nov 22	0.003
4	UB Railway cluster	7	Nov 20	
5	Selenge province	98	Nov 22	0.08
6	Darkhan-Uul province	20	Nov 22	0.02
7	Gobisumber province	1	Nov 18	0.006
8	Dornogobi province	17	Nov 22	0.02
9	Orkhon province	17	Nov 21	0.02
Total		252		0.008

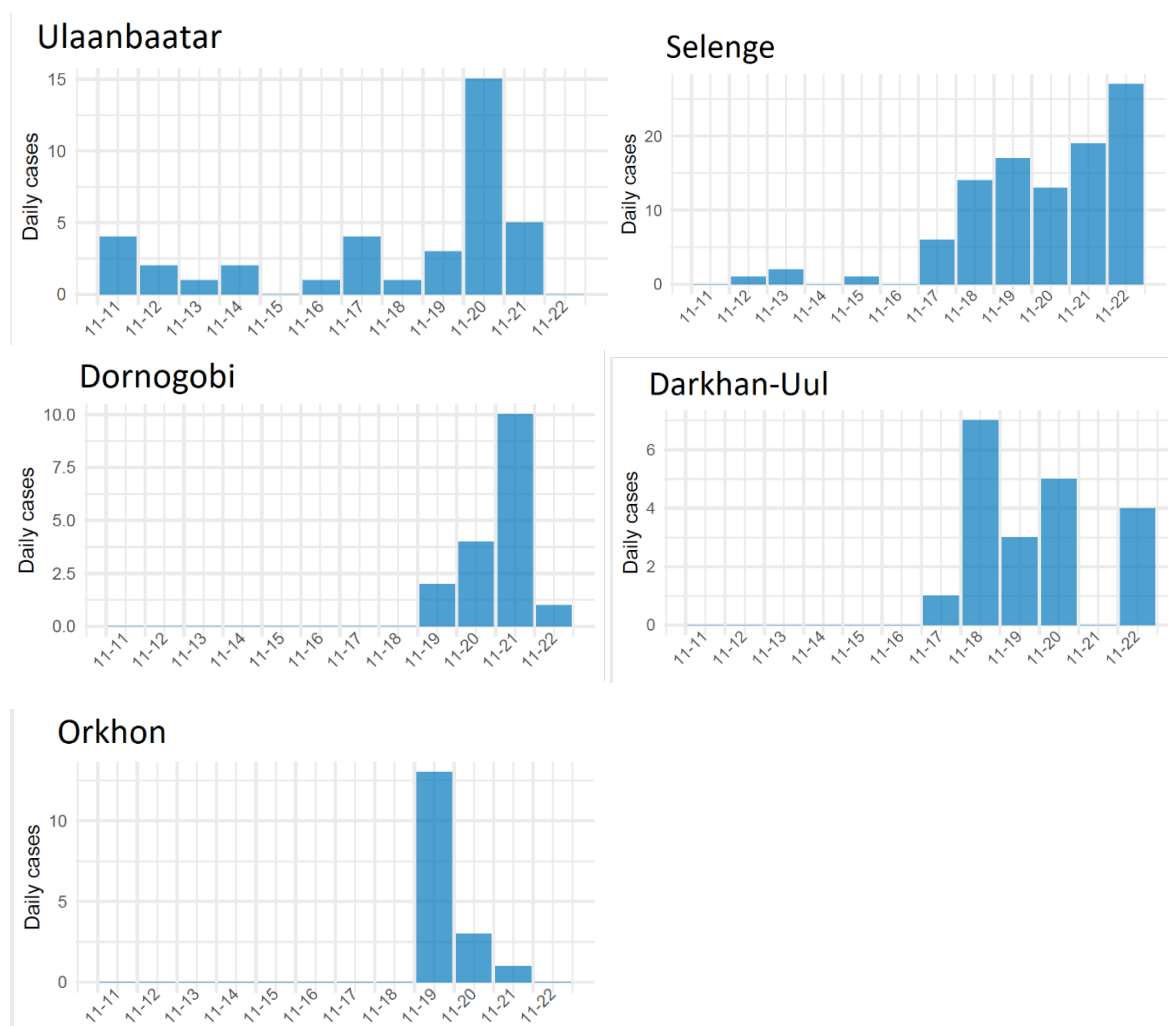
Number of local cases n=193 (didn't include HCWs and quarantine facility cluster), as of 10 p.m. 22 November 2020



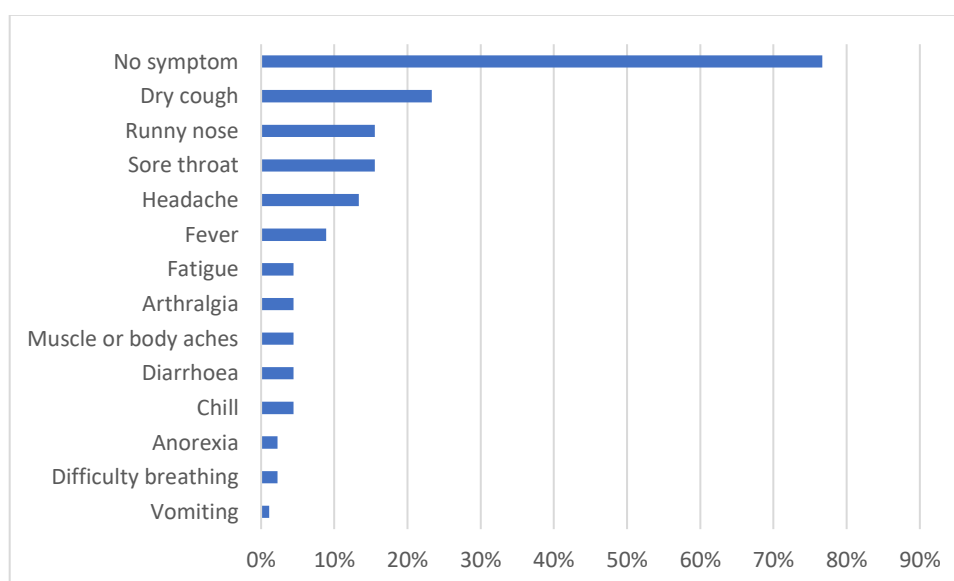
Epicurve of COVID-19 local cases, by date of confirmation (n=252)



Epicurve of reported clusters (as of 10 p.m. 22 November 2020)

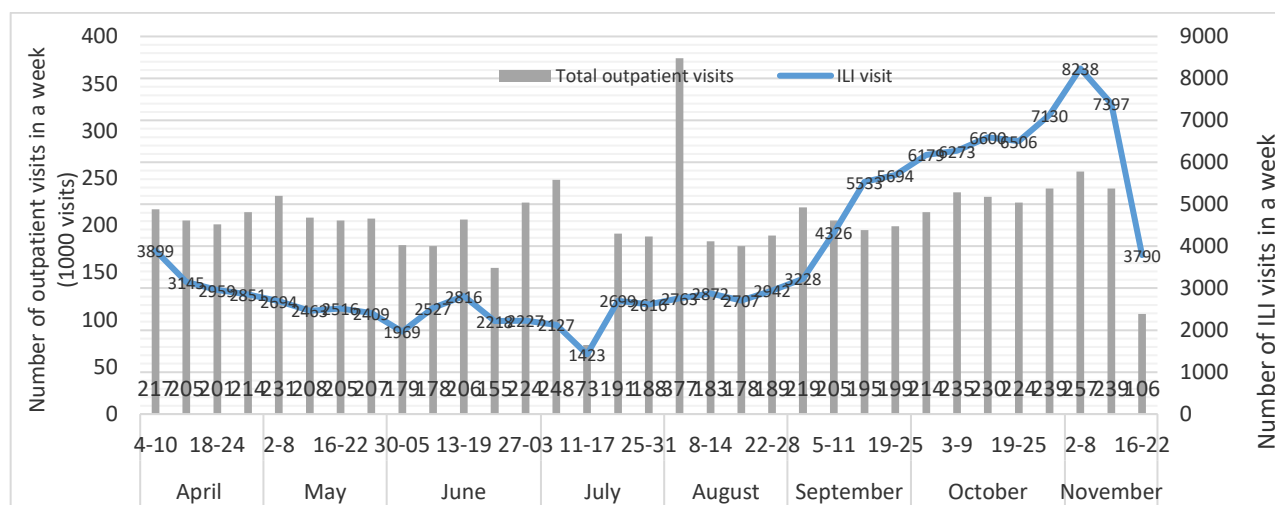


Clinical presentation of confirmed cases (analysis of first 90 local cases)



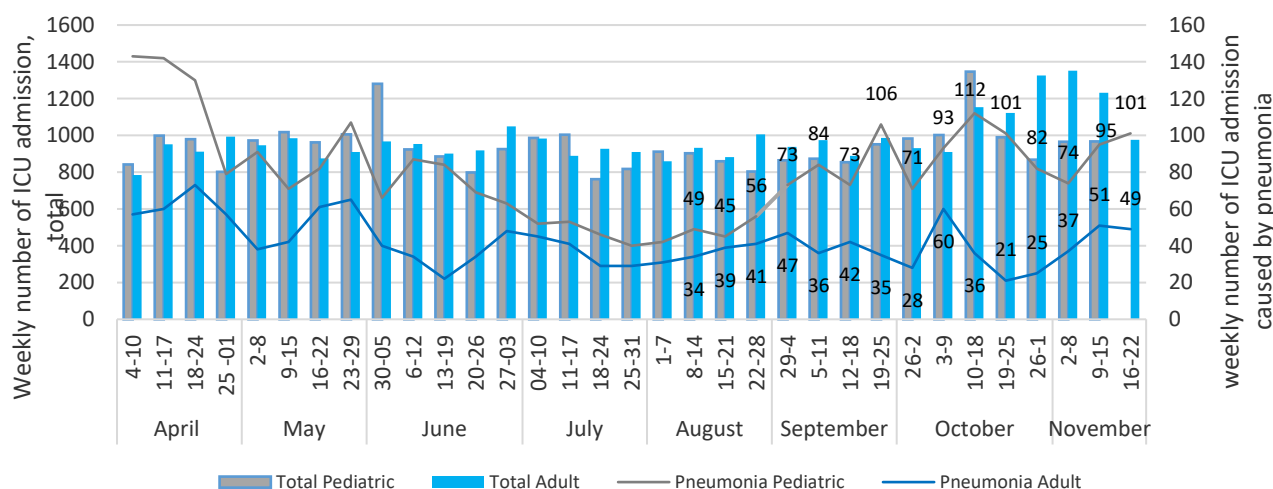
Healthcare capacity surveillance

Weekly number of total outpatient visits and ILI visits



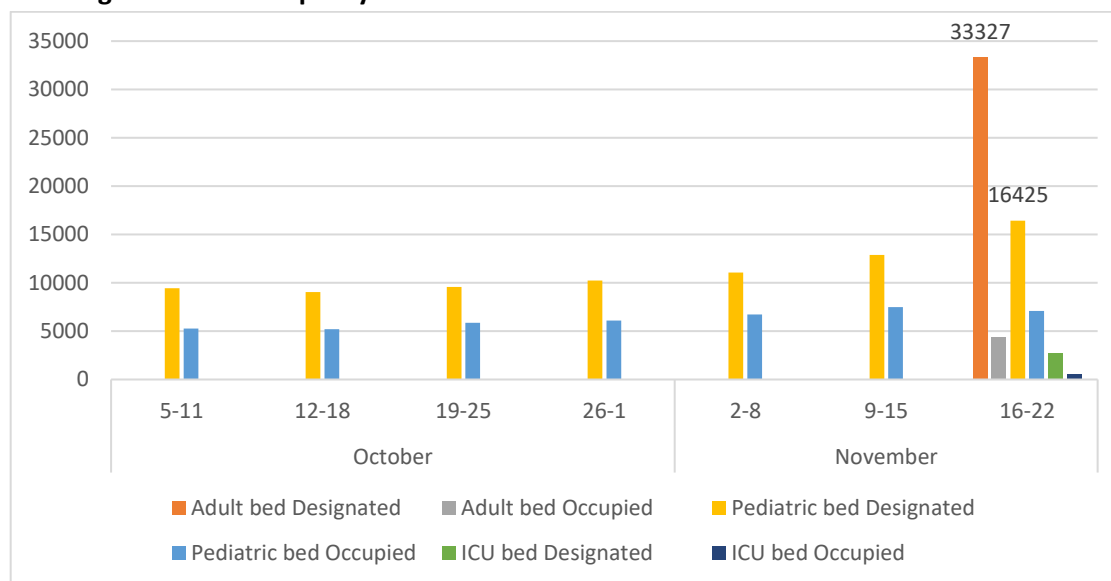
From 16 to 22 November 2020, a total of 106 223 outpatient visits and 3 790 ILI (influenza and influenza like illness) visits registered nationwide. This week, ILI visits accounts for 3.57 percent of all outpatient visits which it was 3.1 last week.

Weekly number of ICU admission (pediatric and adult patients)



A total of 101 pediatric pneumonia and 49 adult pneumonia caused ICU admissions reported last week. No pediatric death caused by pneumonia reported this week, but 2 adult deaths reported.

COVID-19 designated bed occupancy



*Adult and ICU bed data available since 16 November 2020

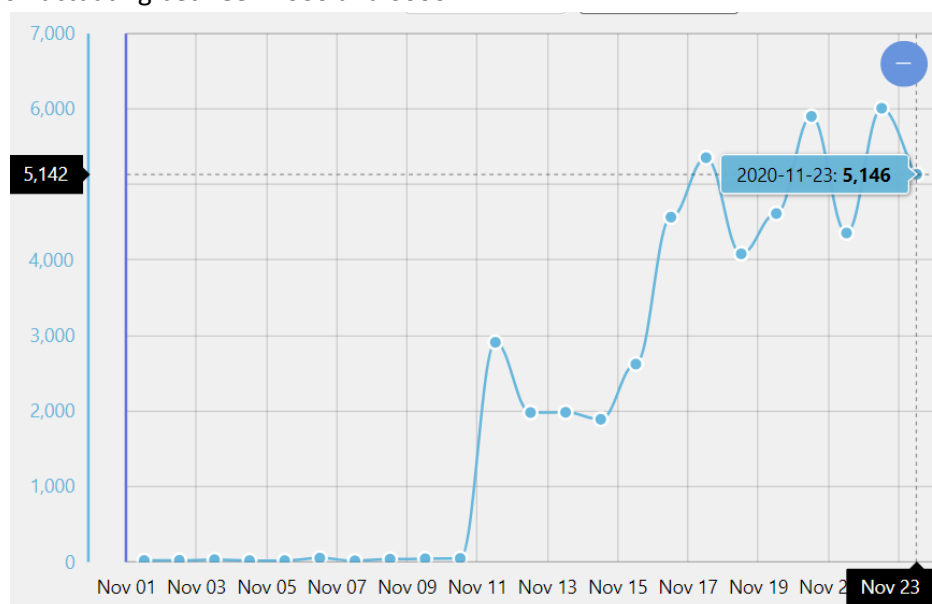
ILI/SARI Surveillance

SARS-CoV-2 and influenza viruses were not detected in 113 specimens received from ILI/SARI sentinel sites in UB city, Dundgobi, Umnugobi, Tuv, Uvurkhangai and Dornogobi provinces. Rhinovirus and seasonal coronavirus were detected 4 (25%) and 2 (1265%) respectively in 16 randomly selected specimens.

Public perception

Hotline surveillance







Since the report of first local transmission on 11 November 2020, the daily hotline calls at National Center for Public Health is fluctuating between 4000 and 6000.



Most of the COVID-19 related calls were about taking test, and receiving test result, vaccine, and confirmed cases track record.

Point of Entry surveillance

Between 6 January and 21 November 2020, total of 502 834 people and 355 581 vehicles entered through the border of Mongolia.

Duration	 Plane	 Truck	 Train	 Car	 Bus	 Passenger
6 Jan- 21 November	456	346 125	7 061	1 637	302	502 834 (by air 57 973 and by ground crossing 444 861)

Altanbulag ground crossing border checkpoint with Russia: TIR truck driver surveillance

Duration	TIR truck	Driver			Isolated drivers	SARS-CoV2 detected	Recovered	Returned
		Mongolian	Foreigner	Total				
18 Mar – 21 November 2020	6 415	1 964	4 633	6 597	224	57	28	7

Strategic Approach

Strategic Approach to COVID-19 Prevention, Detection and Control

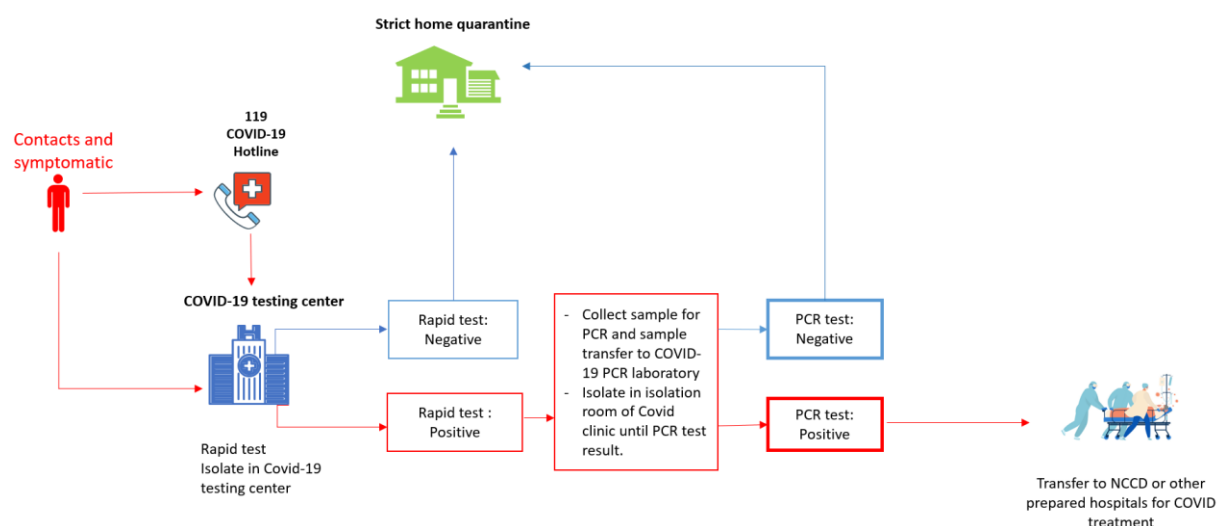
- Review and change current testing strategy and contact tracing system
 - Testing strategy for stage 1: to test all suspected cases, contacts, and repatriated people
 - Repatriated people: 3 times, on arrival, day 14 and day 21 of quarantine
 - Discharge criteria for confirmed cases: 3 negative test results taken from 5 samples (nasopharyngeal, sputum, faeces, urine, blood based on the physician indication) 24 hours apart

No	Day of sampling	Upon arrival	24-72 hours	7th day	14th day	19 th /20th day	Explanation
1	Repatriated people and close contact	+			+	+	The PCR test should be performed within 72 hours for repatriated people
2	Suspected case		+				
3	Probable case		+	+	+	+	All cases of pneumonia
4	Confirmed case		+	+	+	+	Additional tests can be performed as prescribed by physician

- 14 home quarantine after 21 days of mandatory quarantine of repatriated people re-imposed by the Cabinet.

Care pathway and rapid testing strategy:

COVID-19 testing center (18 in Ulaanbaatar, 2 in Selenge)



- Location 18 testing sites in UB city
 - Sukhbaatar district
 - Branch outpatient clinic In Dambadarjaa
 - Bayangol district
 - Emuujin Hospital
 - Khan-Uul

- Branch outpatient clinic in Yaarmag
- Songinokhairkhan
 - Branch outpatient clinic no.2
 - New general hospital
- Bayanzurkh
 - TB dispensary
 - Children hospital in Shar Khad
- Chingeltei
 - Surgery ward at District Health Center
- Bagakhangai
 - District Health Center
- Nalaikh
 - Outpatient clinic /old building/
- Baganuur
 - Infectious diseases ward of District Health Center
- 10 charter flights scheduled in November 2020 However from 11 November, after Tokyo-UB charter flights Mongolia temporarily stopped receiving charter flights.

3 Nov	Seoul-ULN
6 Nov	Almaty-ULN
11 Nov	Tokyo-ULN
12Nov	Seoul- ULN
13 Nov	Seoul- ULN
18 Nov	Seoul- ULN
19 Nov	Frankfurt-ULN
20 Nov	Seoul- ULN
25 Nov	Tokyo-ULN
27 Nov	Seoul- ULN

Non-Pharmaceutical Interventions (NPI)

- MoH is developing a mechanism to adjust long-term non-pharmaceutical intervention decision-making with multisource surveillance in all provinces. Templates and procedures for sharing Web app for real-time multisource surveillance is under development.
- All public celebratory events, including corporate events, for the upcoming New Year's Holiday, are banned concerning the possible high risk of COVID-19 spread. However, the cabinet ruled that businesses and services can maintain normal operations.
- Closed all level of educational institutions, bars, entertainments, sport events and movement out of UB city from 11-14 November 2020
- Rescheduled public transportation in Ulaanbaatar city 6-10 a.m. and 5-9 p.m.
- Restricted unnecessary public movement and mass gathering
- Closed Altanbulag PoE from 16 November 2020 to 15 January 2020 for 2 months
- Tes, Artssuuri, Ulikhan, and Ereentsav border points are to be closed for an indefinite period from 16 November 2020, while Borshoo border point to be closed from 23 November 2020.
- Tsagaannur PoE will be operating in the second and fourth week of each month effective 23 November 2020 to allow fuel transport

- Level 3 extended city-wide home quarantine until 6 a.m 1 December 2020
- Winter vacation of all general education schools nationwide will start on 19 December 2020 to continue until 1 February 2021.

NPI	Monitoring status					
	Date first implemented	Date last modified	Implementation		Partial lift	Lifted
			Geographical (national or sub-national)	Recommended or Required	Lifted for some area	Lifted for all areas
Wearing Face Masks, Hand Hygiene, Respiratory Etiquette	27 January	-	National	Required	No	No
Compulsory quarantine 14-21 days	21 February	29 April	National	Required	No	No
School Closure	27 January	11 Nov	National	Required	No	No
Closed sport clubs, religious and cultural gatherings, tourist camps, resorts and hotels	27 January	11 Nov	National	Required	No	-
Mass Gatherings	27 January	11 Nov	National	Required	No	No
Restrictions on Internal Movement (within country)	23 February	11 Nov	Subnational	Required	No	-
Restrictions on International Travel	31 January	None	National	Required	No	No

Government decision

- Regarding current community outbreak of COVID_19, several decisions were made by The State Emergency Commission, cabinet, National Security Council (see detail from page)
 1. 100 thousand tugrugs for a child will be continued until July 1, 2021. 100 thousand tugrugs per month for children under 18 years of age and pensions and social welfare benefits to be provided to citizens until July 1, 2021.
 2. Fines and penalties for enterprises and organizations other than state and local owned and partly legal entities that have not paid social security contributions will be exempted from November 1, 2020 to July 1, 2021
 3. A draft law on tax exemption from tax penalties and fines imposed in accordance with the law on taxpayers until July 1, 2021 in case of non-payment of taxes due within the period will be developed and discussed at the Cabinet meeting.
 4. Provide discounts on taxes from the rental income. Until July 1, 2021, companies that lease premises for trade, services, private schools, kindergartens and childcare services will reduce the amount of tax on rental income by reducing the rent.
 5. Some imported food products are exempt from tax. Exemption of domestic products from VAT. until July 1, 2021, rice, vegetable oil, hay and animal feed will be exempted from customs and VAT, and domestically processed products will be exempted from VAT.
 6. Ensure the normal operation of enterprises. Take into account the possibility of normal production, packaging, distribution and sale of food products based on the infection control regime issued by the Ministry of Health
 7. Postpone main and interest payments on mortgage loans. To postpone the payment of principal and interest from November 1, 2020 to July 1, 2021 in accordance with the borrower's request. The President of the Bank of Mongolia, B.Lkhagvasuren, and the Chairman of the FRC, D.Bayartsaikhan, have been advised to take regulatory measures to extend the loan agreement without increasing the outstanding amount, and the Ministry of Finance has decided to implement it as a matter of urgency.
 8. Take measures not to take increased interest rates, fines and penalties from banks and NBFIs. Resolve requests from banks, NBFIs and SCCs to defer principal and interest payments on loans to individuals and businesses. In doing so, change the terms of the agreement and extend the term of the agreement in accordance with the solvency of the borrowers without imposing additional burdens on them, such as increased interest rates, fines and penalties.
 9. Ensure the safety of miners. Strict adherence to infection control regimes and safety for mineral and oil companies.
 10. Continue normal export output. Intensify the implementation of green crossings and increase the export of minerals and petroleum products through diplomatic channels to the Chinese side
 11. Maintain infection control at border crossings
 12. Take disinfection measures
 13. Certain taxes on imported pesticides are exempted.
 14. Publicly announce tax exemptions for taxpayers
 15. Digitize tax activities
 16. Withdraw tax debts from taxpayers at the request
 17. Direct the activities of the loan guarantee fund in accordance with the law. Activate the fund
 18. Transfer payments to citizens and organizations that have provided services to budgetary and state-owned organizations
 19. Supporting national production



20. Extend the bidding term until December 4 of this year
21. Shift to budget saving regime
22. Pay attention to the normal operation of the enterprise
23. Perform sterilization and protection

Ulaanbaatar city

1. Shifted to alert level III on 12 November.
2. 18 testing centers established in Ulaanbaatar
3. Public transport in Ulaanbaatar city is working normal timetable, from 6 AM to 10 PM, with a view to reduce crowds on public transport. Until today, service hours of public transport in Ulaanbaatar were from 7 AM until 10 AM as well as between 5 PM and 8 PM, and all nonessential transport and movement of people was prohibited outside of the permitted time.
4. Coals will be distributed for 10000 poor families from next week
5. Quarantined area of Ulaanbaatar railway

Selenge province

1. Evacuation of Selenge general hospital visitors and HCWs to school and kindergarten.
2. Essential health service transferred to FHC and private hospital.

Darkhan province

1. Darkhan city is divided into 4 main blocks. Only socialize in the area where you live.
2. Grocery stores and large shopping malls will be open from 11 am to 6 pm. All grocery workers must be tested.

Orkhon province

- Established 15 testing points. Mass rapid testing is conducting in Erdenet Copper Corporation and Railway workers randomly PCR testing is planned and collecting sample from people tested by Rapid test
- Quarantined close contacts at hotels and children at home

Resources:

- WHO Mongolia CO official Facebook page. Available at:
<https://www.facebook.com/WHO.MGL/>
- Website of Ministry of Health. Available at: <https://www.mohs.mn/home>
- Official Facebook page of the Deputy Prime Minister's Press Department. Available at:
<https://www.facebook.com/profile.php?id=100018428093360>
- Multisource surveillance reports available at: www.budrtgel.mohs.mn
- ILI and SARI report week 45, NIC, NCCD. Available at www.flu.mn
- News on the MoH official website. Available at: <http://www.mohs.gov.mn/news/t/1>
- Daily update no.212-218, released by multisectoral working group, NCCD
- Mongol Messenger No.46 (1526), a weekly published by MONTSAME news agency. Available at:
<https://montsame.mn/en/>
- Resolutions of the State Emergency Commission available at: <https://nema.gov.mn/c/resolution>

Weekly Situation Update team

Reviewed by	Ariuntuya Ochirpurev
Developed by	Undram Mandakh
Situation summary	Nansalmaa Munkhtur Nyamdulam Batjargal
Epi update	Tuvshintur Chuluunbaatar Temuulen Enebish Erdenebat Bulgan
National transmission assessment and Attack rate	Dulamragchaa Buyanbadrakh Gerelmaa Danzan
Subnational transmission assessment and health care capacity surveillance	Undram Mandakh Nyamdulam Batjargal
ILI/SARI surveillance	Urtnasan Chuluunbat