

Highlights

- 88 new cases reported in the past 7 days compared to 166 new cases in the previous week. 87 new cases were locally acquired cases
- No new cases reported in the last 26 days in Selenge province
- Lockdown and targeted testing conducted in 1 khoroo of Bayangol and Bayanzurkh districts on 14-17 January 2021
- 165 citizens returned from Seoul on 15 January by charter flights
- Laboratory diagnostic capacity has been extended in 3 districts and tertiary level hospitals

Situation summary

- HCWs infection accounted for 3,4 % (3 cases) of all new cases:
 - 1 case from Achtan hospital (doctor)
 - 2 cases from Songinokhairkhan district hospital, deployed to RRT at the NCCD (epidemiologist and nurse)
- From 10 November 2020 to 17 January 2021, a total of 3,443 close contacts, 21,749 secondary contacts identified and monitored nationwide
- 329 cases (30 HCWs, 116 patients, 33 caregivers, 105 household contacts, 45 other close contacts) tested positive in Bayanzurkh district hospital. 1250 close contacts, 332 of whom were tested 4 times, tested negative and discharged from the quarantine facilities and transferred to home isolation. 1691 secondary contact tested negative
- 54 cases (23 HCWs, 19 household contacts and 12 other contacts) tested positive in Achtan private hospital. 90 contacts (HCWs) were quarantined and tested.
- The MoH and NCCD organized e-training "Preparation of disinfection worker for COVID-19" on 7-13 January 2021.
- Active surveillance covered 11,506 employees in 238 high-risk setting, including market, shopping center, bank, public transport, taxi, pharmacy, health facilities

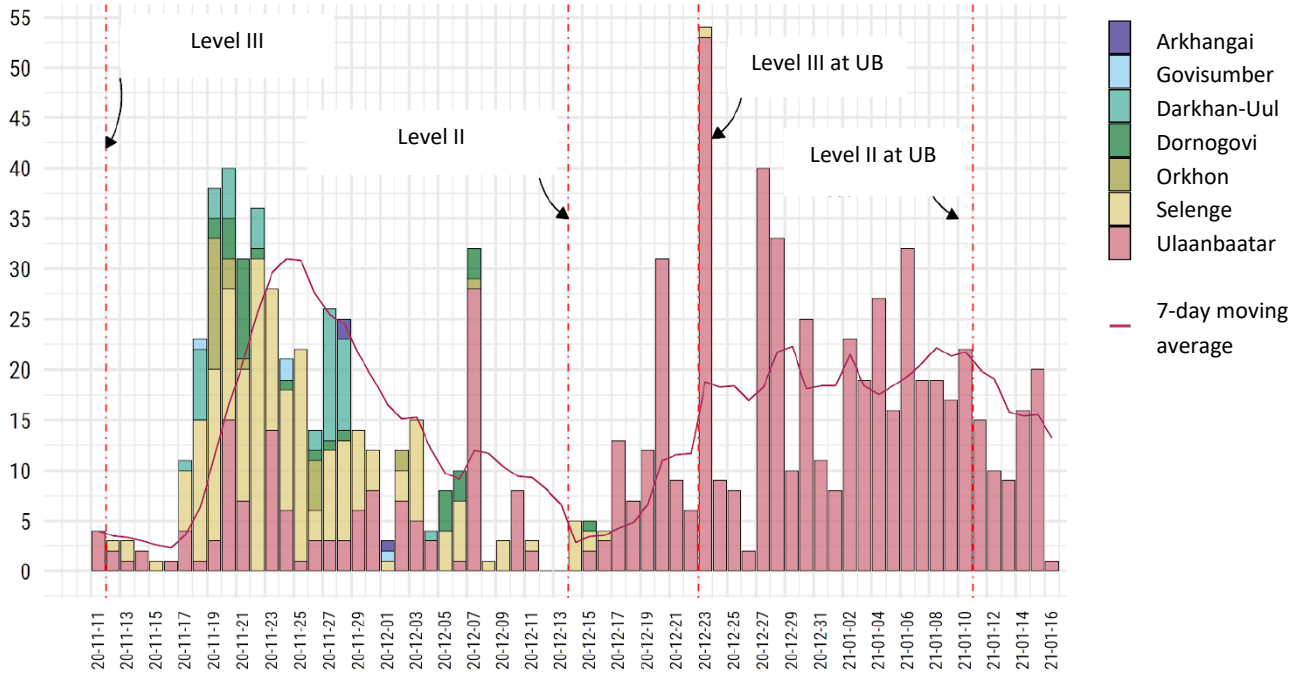
Updates

Indicators	Total	Past week	Weekly changes
Cases	1517	88	-78
Imported	410	1	-2
Local	1107	87	-76
HCW	136	3	-37
Deaths	1	0	-1
Tests	854,099	101,750	-14,892

	Organizations	Number of tested people	Coverage
1	50 shopping centres in 6 districts	3156	23.4%
2	11 banks	3271	40.3%
3	10 licensed taxi companies	386	50.0%
4	20 public transport organizations	851	24.8%
5	21 drugs supplier, 68 pharmacies	364	15.2%
6	Dental clinic	320	10.0%
7	48 health facilities	3158	15.1%

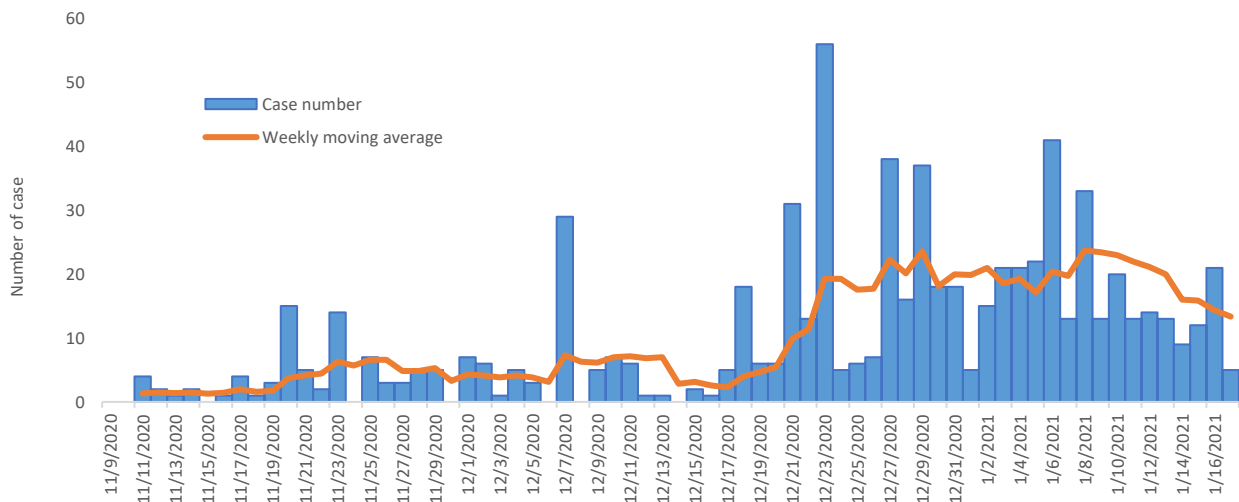


Epidemic curve of local cases of COVID-19, confirmed date



In the last week, new cases have been reported only in Ulaanbaatar. New clusters detected in city street cleaners (13 cases, 18 close contacts), Bayanzurkh district’s 17th khoroo public servant cluster (29 cases, 14 close contacts).

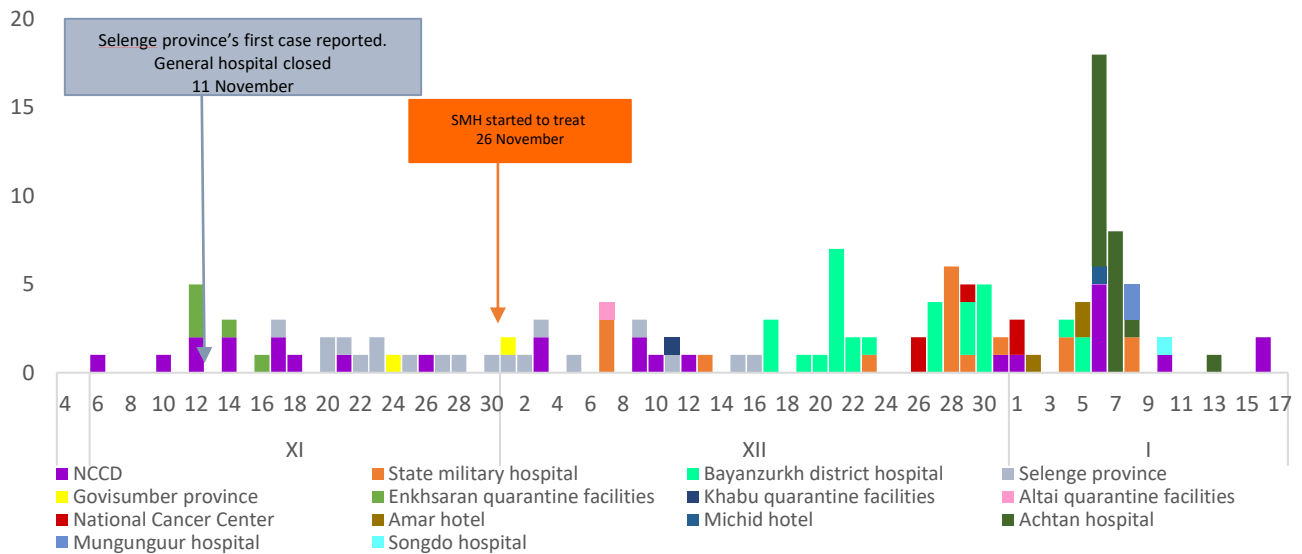
Ulaanbaatar epidemic curve of local cases of COVID-19, by date of confirmation



In the past week new clusters reported in Ulaanbaatar. Reported new cases were families, co-workers and residents of the same apartment. The weekly moving average shows that the general trend of infection is being stabilized.



HCWs infection's epidemic curve of COVID-19, by date of confirmation



As 17 January 2021, a total of 136 health workers have been infected with COVID-19. New cases have been reported among the HCWs of the NCCD, Bayanzurkh district hospital, State military hospital and Achtan, Mungunguur, Songdo private hospitals. (30,7% doctors, 37,2% nurses)

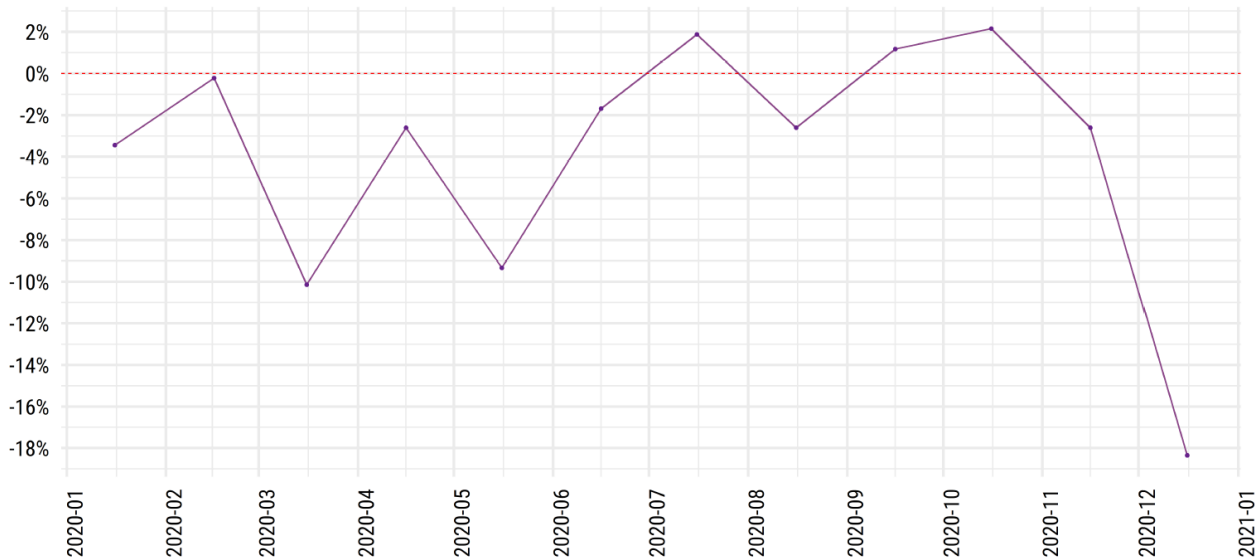
Transmission stage assessment:

Provinces	Date of last confirmed case	Number of local cases in past 7 days	Total number of local cases	Weekly changes of SARI cases (week 53/1)	Transmission assessment	Transmission stages description	
Arkhangai	30 Nov	0	3	+1	stage 0	Stage 0 –Arkhangai, Govisumber, Darkhan-Uul, Orkhon and Dornogovi provinces shifted to stage 0 and no new cases reported in the last 28 days, ILI/SARI decreased. Active surveillance is ongoing. No imported cases	
Bayan-Ulgii	-	0	0	-17	stage 0		
Bayankhongor	-	0	0	-2	stage 0		
Bulgan	-	0	0	0	stage 0		
Govi-Altai	-	0	0	-3	stage 0		
Govisumber	30 Nov	0	4	+4	stage 0		
Darkhan-Uul	04 Dec	0	45	-7	stage 0		
Dornogovi	15 Dec	0	32	+4	stage 0		
Dornod	-	0	0	+3	stage 0		
Dundgovi	-	0	0	-4	stage 0		
Zavkhan	-	0	0	-2	stage 0		
Orkhon	07 Dec	0	25	0	stage 0		
Uvurkhangai	-	0	0	+1	stage 0		
Umnugovi	-	0	0	-1	stage 0		Stage 2 –Testing of COVID-19 specimen has increased in Selenge provinces, no new clusters identified, no new cases reported in the last 2 weeks. Selenge province shifted from stage 3 to stage 2.
Sukhbaatar	-	0	0	+3	stage 0		
Selenge	23 Dec	0	217	-1	stage 2		
Tuv	-	0	0	-1	stage 0		
Uvs	-	0	0	+1	stage 0		
Khovd	-	0	0	+2	stage 0		
Khuvsgul	-	0	0	+2	stage 0		
Khentii	-	0	0	-3	stage 0		
Ulaanbaatar	17 Jan	87	784	+12	stage 2		
National	17 Jan	87	1107	-8	stage 2		



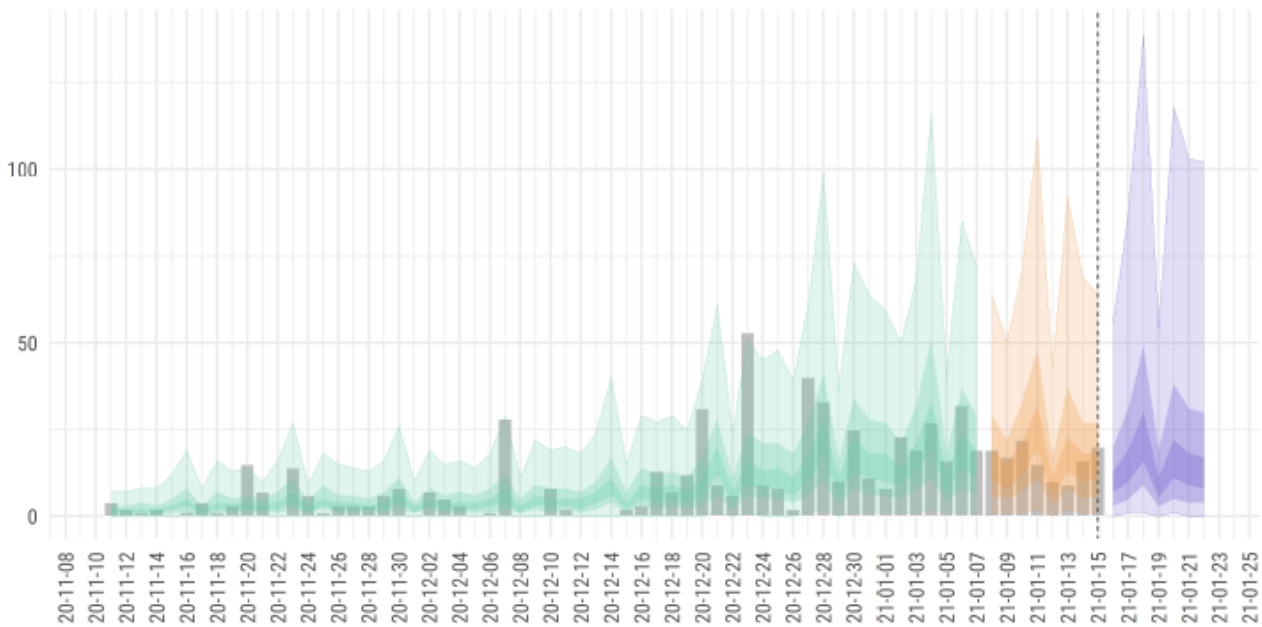
Indicators

All cause deaths compared to the previous years



This figure shows decreasing trend of monthly all-cause mortality rate compared to last 5-year average, particularly, in March, November and December when quarantine was imposed.

Ulaanbaatar city forecasting

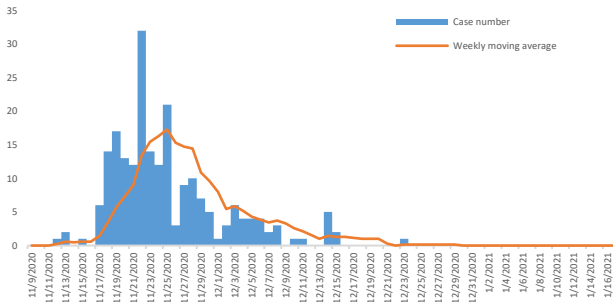


Purple part of this graph shows forecasted new cases from 18 January, 21 (90% CI, 1-139) unless there is a change in the testing number and responses.

The doubling time is 380 (90% CI, 3.9 - 3.6) and the incidence is expected to increase, with a growth rate of 0.18%.

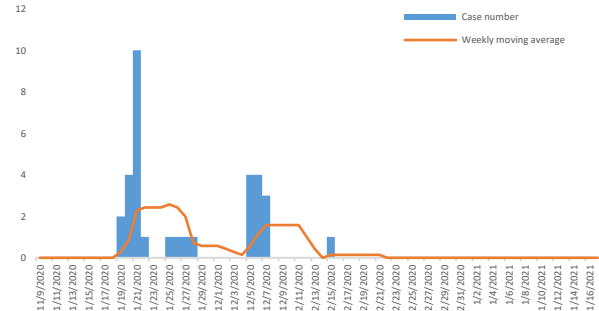
Epidemic curve of provinces reported clusters

Selenge province



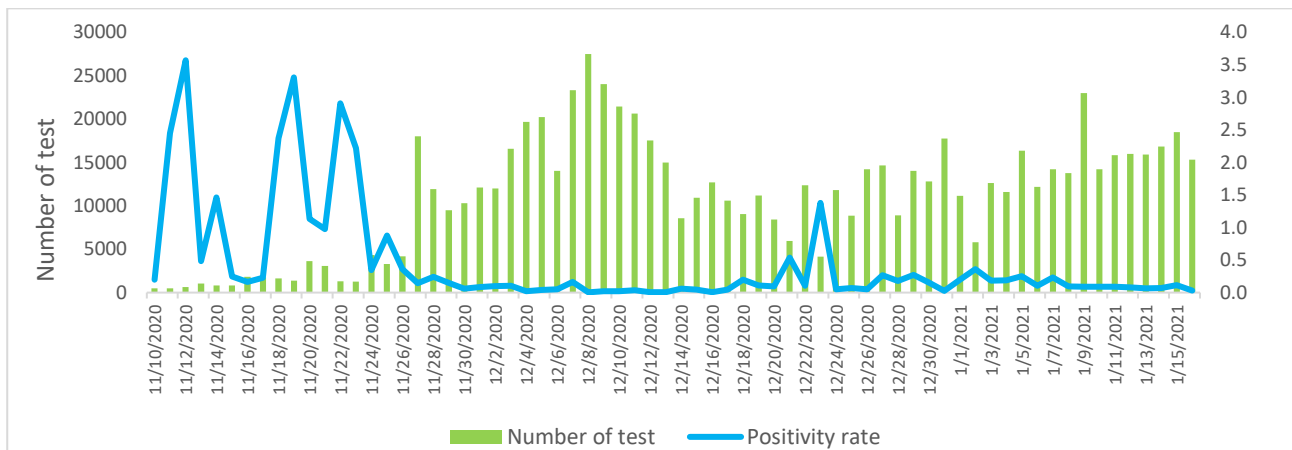
25 days have passed since the last case reported on 23 December in Selenge province

Dornogovi province



33 days have passed since the last case reported on 15 December in Dornogovi province

Daily number of test and positivity rate



The positivity rate in this week decreased in this week, 0.08% compared to 0.16% last week. The number of test has increased due to new clusters. 112,622 PCR tests performed in the last week.

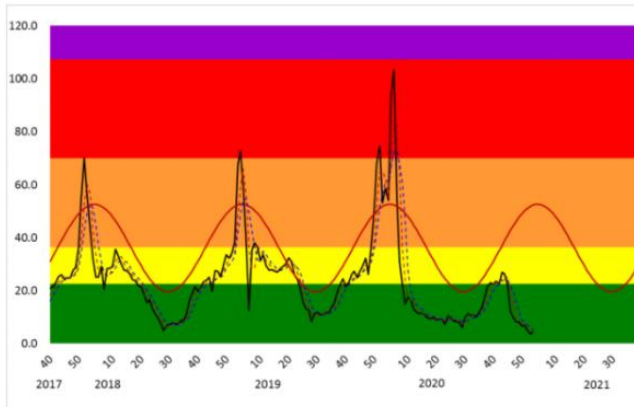
Active surveillance in provinces:

No	Provinces	Number of test last week	Number of test this week	Weekly changes
1	Selenge province general hospital	1109	2059	+950
2	Darkhan-Uul province general hospital	322	368	+46
3	Orkhon Regional Diagnostic and Treatment Center (including Bulgan, Khuvsgul province's samples)	991	2093	+1103
4	Khovd Regional Diagnostic and Treatment Center (including Uvs, Bayan-Ulgii province's samples)	380	168	-212

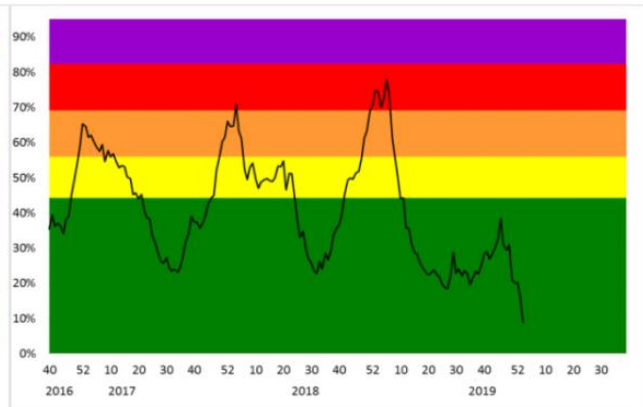


5	Dornod Regional Diagnostic and Treatment Center (including Sukhbaatar province's samples)	49	1405	+1356
---	---	----	------	-------

Weekly number of outpatients/inpatients
ILI incidence rate (10,000 pop)



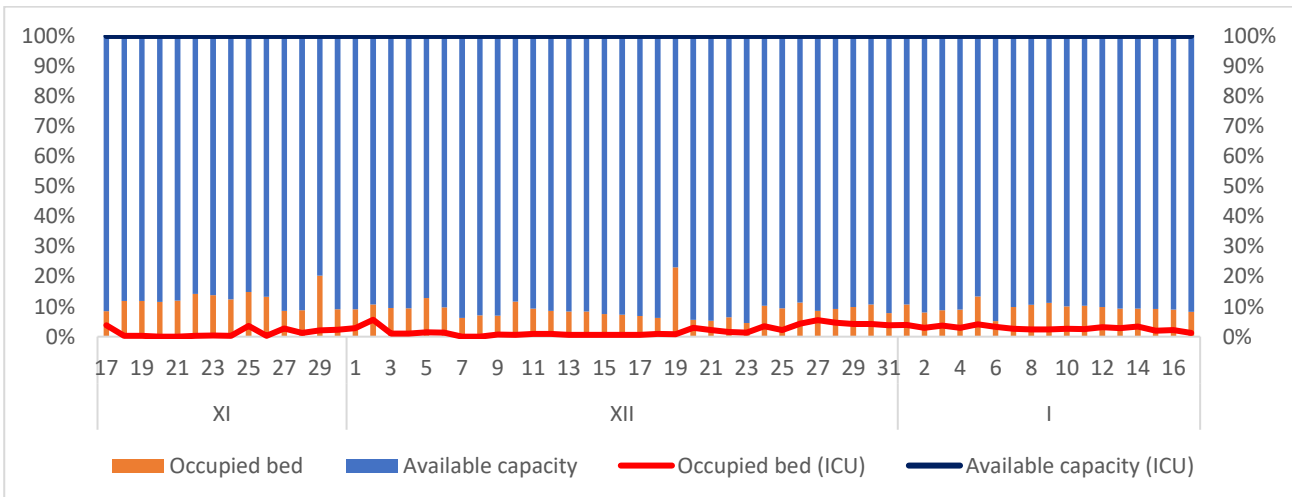
SARI incidence rate (under 16 years old)



From 4 to 10 January 2021, a total of 121,649 outpatient visits and 1,480 ILI (influenza and influenza like illness) visits registered nationwide. This week, ILI visits accounted for 1.2 percent of all outpatient visits which is 0.6% lower than the last week, 7.8% lower than the 3-year average.

SARI accounted for 2.3% of all hospitalizations, which is 1.8% lower than last week, 16% lower than the 3-year average.

COVID-19 designated bed occupancy



Since 17 November, 77.0-95.5 percent of the beds prepared for COVID-19 have been available, and 0.0-5.6 percent of the intensive care beds have been used. Nationwide, 4,800 beds and 300 ICU beds were prepared for COVID-19 in 21 provinces, 9 districts, Ulaanbaatar Maternal and Child Hospital (300 beds), National Diagnostic and Treatment Center (250 beds), Ulaanbaatar Children's Hospital (50 beds) and Songinokhairkhan district hospital (100).



Non-Pharmaceutical Interventions (NPI)

- Ulaanbaatar city shifted from alert Level III to alert level II from 11 January 2021. 19 types of businesses and services allowed to run their operations
- All provinces extended alert level II until 1 March 2020.
- Restriction of domestic movement between Ulaanbaatar city and provinces:
 - Mandatory PCR testing
 - Transportation of food, fuel, medical supplies, animal feed, health care services, funerals
 - Travelers from Sukhbaatar soum of Selenge province and Zamyn-Uud soum of Dornogovi province require PCR testing. Other province residence will enter to Ulaanbaatar city after completing health questionnaires
- Altanbulag PoE closure extended until 1 February 2021. Food, medicine and medical supplies will be allowed to cross the border once a week at Altanbulag port from 1 February.
- Recommended teleworking of 70% staff
- Syndromic surveillance and mask use has been implemented in all public places, businesses, workplaces, health facilities
- All public celebratory events, including Lunar New Year's Holiday, are banned

Upcoming events

- Multisectoral advisory teams will be deployed to all level health facilities to setup and trained hospital IMS teams, conduct joint assessment of health facility readiness, update health facility preparedness plan and setup care pathway
- Develop SopS of IMS guidelines including information management, contact tracing, early detection, care pathway, logistics, RCCE
- Continue capacity building of local IMS team, train and deploy national advisory teams to 21 provinces and 9 districts
- Finalize the short video on UHC/Health emergency for "Health for all" film festival