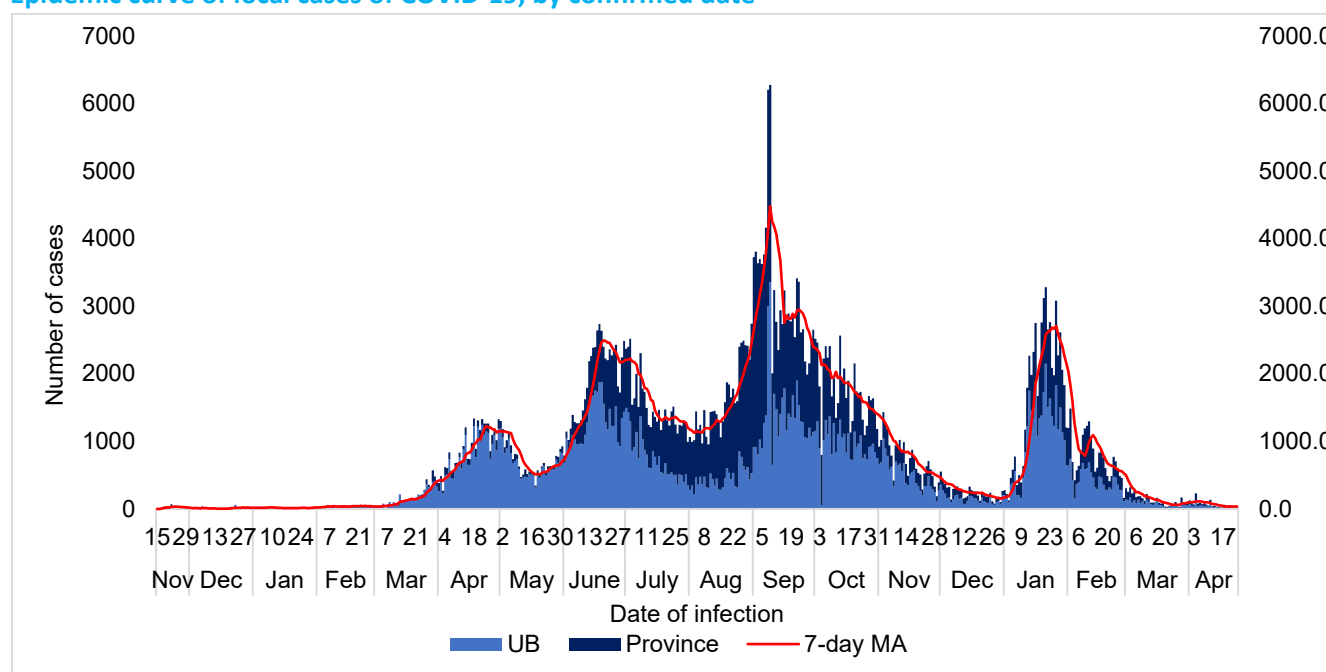


Situation summary in Mongolia

- 273 cases and 0 death confirmed in the past week
- 219 cases confirmed in UB, and 54 cases confirmed in all 21 provinces in the past seven days
- Mild 7, moderate 128, severe 56 and 12 critical cases are under medical treatment
- HCWs infection is 1.7% (15,699 cases) of all the confirmed cases. 22(100%) new cases in the past week are community acquired infections.

Epidemic curve of local cases of COVID-19, by confirmed date

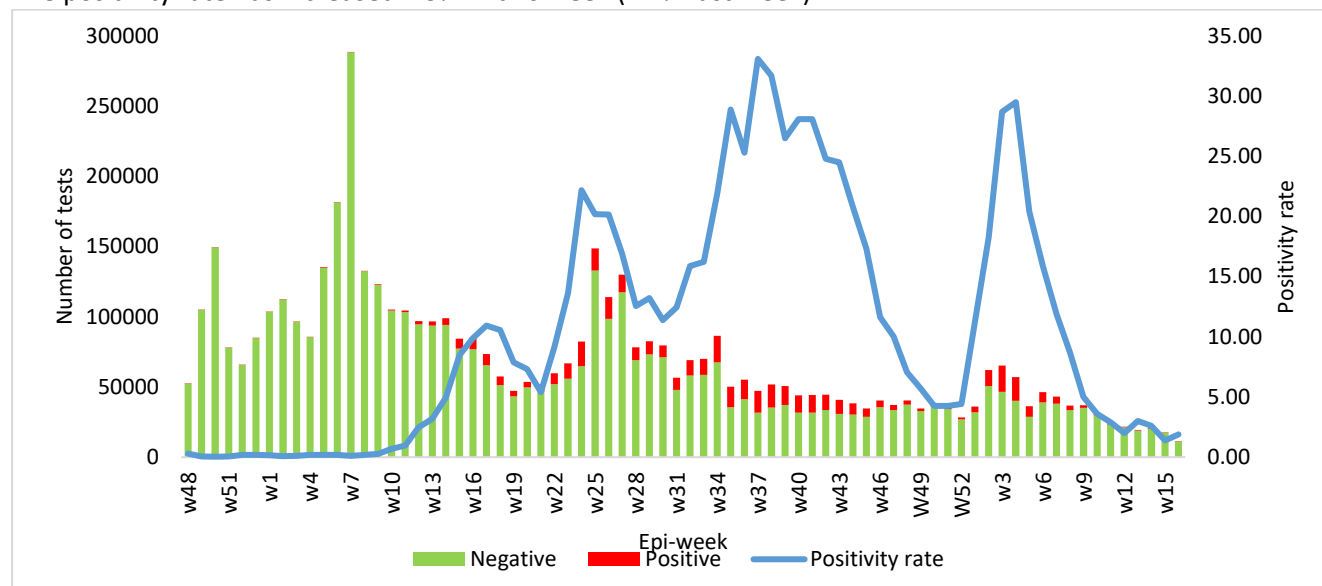


Epi Updates

| Indicators | Total | Past week | Weekly changes | |
|-------------|------------|-----------|----------------|---|
| Cases | 920,803 | 273 | -9.0 % | ↓ |
| Imported | 1231 | 0 | 0% | |
| Local | 919,524 | 273 | -9.0 % | ↓ |
| Deaths | 2108 | 0 | 0 % | |
| Tests | 11,630,916 | 11,449 | 22.6 % | ↑ |
| Vaccination | 5,607,450 | 5,467 | 0.04% | |

Laboratory positivity rate

The positivity rate has increased 1.9% in this week (1.4% last week).



National weekly transmission stage assessment

| Provinces | Date of last case confirmed | Total number of cases | In last 7 days | Cases per 100,000 population | Positivity rates of PCR | Stage MNG/WPRO | Transmission stages description |
|--------------|-----------------------------|-----------------------|----------------|------------------------------|-------------------------|----------------|--|
| Arkhangai | 23.Apr | 17133 | 2 | 3.2 | | Stage 1/2 | Stage 0: 17 provinces are reported local clusters.. |
| Bayan-Ulgii | 28.Mar | 13329 | 0 | 0 | 0% | Stage 1/0 | |
| Bayankhongor | 25.Mar | 23437 | 0 | 0 | | Stage 1/0 | |
| Bulgan | 20.Mar | 14120 | 0 | 0 | 0% | Stage 1/0 | |
| Gobi-Altai | 20.Mar | 18745 | 0 | 6.9 | | Stage 1/0 | |
| Gobisumber | 23.Mar | 7775 | 0 | 5.6 | 2.60% | Stage 1/0 | Stage 1: 3 provinces are reported local clusters. |
| Darkhan-Uul | 23.Apr | 14036 | 5 | 4.8 | 7% | Stage 1/2 | |
| Dornogobi | 19.Apr | 27256 | 4 | 4.2 | 0.30% | Stage 1/0 | |
| Dornod | 18.Apr | 24542 | 3 | 0 | 0% | Stage 1/0 | |
| Dundgobi | 20.Mar | 15122 | 0 | 0 | 0% | Stage 1/0 | |
| Zavkhan | 20.Mar | 17307 | 0 | 0 | 0% | Stage 1/0 | Stage 2: Umnugobi province and UB are reported local clusters. |
| Orkhon | 12.Apr | 18170 | 0 | 3.8 | 6.30% | Stage 1/0 | |
| Uvurkhangai | 20.Mar | 22458 | 0 | 0.9 | 1.30% | Stage 1/0 | |
| Umnugobi | 24.Apr | 28475 | 38 | 43.5 | 0.90% | Stage 3/2 | |
| Sukhbaatar | 22.Mar | 17743 | 0 | 0 | | Stage 1/0 | |
| Selenge | 04.Apr | 27437 | 0 | 5.5 | 2% | Stage 1/0 | Stage 3: Shift to Risk-based approach to PHSM linked with Health Care Capacity |
| Tuv | 15.Apr | 21558 | 0 | 11.8 | | Stage 1/0 | |
| Uvs | 20.Mar | 21281 | 0 | 0 | 0% | Stage 1/0 | |
| Khovd | 22.Apr | 26087 | 2 | 3.4 | 4% | Stage 1/2 | |
| Khuvsgul | 20.Mar | 22332 | 0 | 0 | 0% | Stage 1/0 | |
| Khentii | 20.Mar | 17597 | 0 | 1.3 | | Stage 1/0 | |
| Ulaanbaatar | 24.Apr | 503,584 | 219 | | | Stage 3/2 | |

Immunization

- As of 24 April 2022, the coverage of 1st dose is 96.4% (2,272,842), 2nd dose – 92.3% (2,175,357) in the target population.
- In Ulaanbaatar and 21 provinces, 1,035,670 and 121,581 people were vaccinated with the 3rd and 4th doses of AstraZeneca and Pfizer.
- Since the start of vaccination 461,116 (8%) vaccinated people have been confirmed to be infected with the coronavirus.

| № | Province, city | Total population | Number of people eligible | Number of people coverage | | | | | Total population coverage, % | | | | Target group coverage, % | | |
|--------------------|----------------|------------------|---------------------------|---------------------------|-------------|------------|-------------|-----------|------------------------------|-------------|------------|-------------|--------------------------|-------------|--------------|
| | | | | First dose | Second dose | Third dose | Fourth dose | Amount | First dose | Second dose | Third dose | Fourth dose | First dose | Second dose | Booster dose |
| 1 | Arkhangai | 95,067 | 70,042 | 60,489 | 57,208 | 26,714 | 2,061 | 146,472 | 63.6% | 60.2% | 28.1% | 2.2% | 86.4% | 81.7% | 41.08% |
| 2 | Bayan-Ulgii | 105,853 | 74,496 | 67,288 | 63,516 | 27,573 | 472 | 158,849 | 63.6% | 60.0% | 26.0% | 0.4% | 90.3% | 85.3% | 37.65% |
| 3 | Bayankhongor | 89,329 | 64,710 | 55,878 | 54,078 | 25,908 | 2,960 | 138,824 | 62.6% | 60.5% | 29.0% | 3.3% | 86.4% | 83.6% | 44.61% |
| 4 | Bulgan | 61,516 | 46,267 | 42,538 | 39,951 | 19,606 | 1,886 | 103,981 | 69.1% | 64.9% | 31.9% | 3.1% | 91.9% | 86.3% | 46.45% |
| 5 | Gobi-Altai | 58,343 | 43,485 | 39,202 | 37,578 | 16,664 | 1,609 | 95,053 | 67.2% | 64.4% | 28.6% | 2.8% | 90.2% | 86.4% | 42.02% |
| 6 | Gobi-Sumber | 18,008 | 12,706 | 12,363 | 11,994 | 4,992 | 773 | 30,122 | 68.7% | 66.6% | 27.7% | 4.3% | 97.3% | 94.4% | 45.37% |
| 7 | Darkhan | 103,580 | 75,822 | 65,534 | 64,675 | 33,401 | 4,553 | 168,163 | 63.3% | 62.4% | 32.2% | 4.4% | 86.4% | 85.3% | 50.06% |
| 8 | Dornogobi | 71,233 | 52,062 | 49,910 | 48,174 | 22,850 | 2,967 | 123,901 | 70.1% | 67.6% | 32.1% | 4.2% | 95.9% | 92.5% | 49.59% |
| 9 | Dornod | 83,473 | 60,129 | 55,927 | 53,949 | 28,274 | 5,199 | 143,349 | 67.0% | 64.6% | 33.9% | 6.2% | 93.0% | 89.7% | 55.67% |
| 10 | Dundgobi | 47,274 | 35,162 | 27,898 | 26,716 | 10,499 | 853 | 65,966 | 59.0% | 56.5% | 22.2% | 1.8% | 79.3% | 76.0% | 32.28% |
| 11 | Zawkhan | 73,231 | 54,627 | 48,365 | 46,900 | 22,785 | 3,735 | 121,785 | 66.0% | 64.0% | 31.1% | 5.1% | 88.5% | 85.9% | 48.55% |
| 12 | Orkhon | 105,361 | 77,440 | 66,580 | 65,237 | 32,862 | 5,038 | 169,717 | 63.2% | 61.9% | 31.2% | 4.8% | 86.0% | 84.2% | 48.94% |
| 13 | Uvurkhangai | 116,785 | 85,879 | 69,147 | 66,325 | 29,063 | 2,311 | 166,846 | 59.2% | 56.8% | 24.9% | 2.0% | 80.5% | 77.2% | 36.53% |
| 14 | Umnugobi | 71,248 | 51,097 | 60,261 | 55,120 | 28,256 | 1,132 | 144,769 | 84.6% | 77.4% | 39.7% | 1.6% | 117.9% | 107.9% | 57.51% |
| 15 | Sukhbaatar | 64,307 | 46,671 | 45,571 | 43,908 | 24,300 | 4,201 | 117,980 | 70.9% | 68.3% | 37.8% | 6.5% | 97.6% | 94.1% | 61.07% |
| 16 | Selenge | 108,370 | 80,566 | 70,323 | 66,347 | 37,363 | 7,079 | 181,112 | 64.9% | 61.2% | 34.5% | 6.5% | 87.3% | 82.4% | 55.16% |
| 17 | Tuv | 93,332 | 68,789 | 59,934 | 57,674 | 27,369 | 2,491 | 147,468 | 64.2% | 61.8% | 29.3% | 2.7% | 87.1% | 83.8% | 43.41% |
| 18 | Uvs | 84,294 | 60,408 | 52,178 | 49,088 | 21,050 | 848 | 123,164 | 61.9% | 58.2% | 25.0% | 1.0% | 86.4% | 81.3% | 36.25% |
| 19 | Khovd | 88,974 | 63,497 | 55,912 | 53,020 | 26,864 | 2,050 | 137,846 | 62.8% | 59.6% | 30.2% | 2.3% | 88.1% | 83.5% | 45.54% |
| 20 | Khuvsgul | 136,058 | 99,985 | 86,577 | 81,030 | 32,974 | 2,449 | 203,030 | 63.6% | 59.6% | 24.2% | 1.8% | 86.6% | 81.0% | 35.43% |
| 21 | Khentii | 78,507 | 57,686 | 53,354 | 51,666 | 23,980 | 2,038 | 131,038 | 68.0% | 65.8% | 30.5% | 2.6% | 92.5% | 89.6% | 45.10% |
| At the aimag level | | 1,754,143 | 1,754,143 | 1,145,229 | 1,094,163 | 523,350 | 56,705 | 2,819,447 | 65.3% | 62.4% | 29.8% | 3.2% | 65.3% | 62.4% | 33.07% |
| 22 | Ulaanbaatar | 1,499,140 | 1,075,834 | 1,127,613 | 1,081,194 | 514,320 | 64,876 | 2,788,003 | 75.2% | 72.1% | 34.3% | 4.3% | 104.8% | 100.5% | 53.84% |
| State amount | | 3,253,283 | 2,357,360 | 2,272,842 | 2,175,357 | 1,037,670 | 121,581 | 5,607,450 | 69.9% | 66.9% | 31.9% | 3.7% | 96.4% | 92.3% | 49.18% |

PHSM

- Heightened state of alert level II has been reduced to level I start from 14 Feb 2022 except for vaccinations, wearing masks, and social distancing:
 - Restaurants, bars, and cafes with designated premises are open until 05:00 am
 - Dedicated shops and restaurants can operate 24/7
- 10 soums of 8 provinces with PoE are in alert level II.
- Educational activities started from 14 Feb. In addition, the process of enrolling 2-year-old children in kindergartens is starting.
- All travelers no need pre-travel test max 72 hours before departure since 14 March. No quarantine required for all travelers.