

This Situation Report is jointly issued by PNG National Department of Health and World Health Organization once weekly. This Report is not comprehensive and covers information received as of reporting date.

## Situation Summary and Highlights

- ❑ As of 02 August, Papua New Guinea has a total of 110 COVID-19 cases. From the period of 27 July to 02 August, there were 48 new cases and 2 deaths reported.
- ❑ All the recent cases confirmed were from the National Capital District (NCD) except for the two cases detected in Lae in Morobe Province.
- ❑ Contact tracing is ongoing for all the cases confirmed in the National Capital District and in Lae.
- ❑ Prime Minister Hon James Marape and WHO Director-General Dr Tedros Adhanom Ghebreyesus had a virtual meeting on 28 July to discuss the evolving COVID-19 situation in Papua New Guinea and identify areas of support and collaboration for the COVID-19 response.
- ❑ On 28 July, Port Moresby has been placed in a 14-day lockdown with only essential businesses to operate, schools closed, and public transport services stopped. Domestic flights out of Port Moresby are also suspended.
- ❑ Community-based testing has commenced in Port Moresby as part of the strategy to increase case detection. The NCD Provincial Health Authority (PHA) and several partners supported the setting up of screening areas in urban clinics. The clinics in Koki/Wanigela, Morata, Six Mile, Nine Mile, Gordons, Pari and Badili have started collecting samples for testing.
- ❑ A drive-through clinic at the Taurama Aquatic Centre where people with cold and flu symptoms can get tested was set up with support from St John Ambulance, National Department of Health and New Zealand Government.
- ❑ PNG Defence Force mobilised a team to support swabbing/sample collection at the urban clinics in NCD.
- ❑ The Australian Medical Assistance Team will be deployed in the first week of August and shall include a multi-disciplinary team that will conduct needs assessment at Port Moresby General Hospital, Rita Flynn Isolation Facility and other potential field hospitals.

**Table 1. COVID-19 IN PAPUA NEW GUINEA**

	New Cases	Total
National Capital District	46	101
Eastern Highlands	0	1
East New Britain	0	2
Morobe	2	3
Western	0	3
<b>TOTAL</b>	<b>48</b>	<b>110</b>

**Table 2. COVID-19 GLOBAL AND REGIONAL UPDATE<sup>1</sup>**

	Confirmed Cases	Deaths
Global	17 396 943	675 060
Western Pacific	312 771	8 388

<sup>1</sup> WHO Situation Report # 194, Data as of 01 August 2020

## Upcoming Events and Priorities

- ❑ **Coordination:** The National Control Centre is supporting NCD PHA to operationalize its Provincial Emergency Operations Centre and has allocated space in Morauta Haus for its 24/7 operations. The Health Operations Team is now meeting daily to improve planning and coordination among clusters and stakeholders. A mechanism needs to be mapped out to coordinate and integrate effectively the support offered by NGOs and members of the Health Cluster in various areas of response, such as risk communication, community engagement, distribution of home quarantine kits, etc.
- ❑ **Surveillance and Testing:** The community-based testing in urban clinics in NCD and the drive-through clinic at the Rita Flynn are part of the expanded testing strategy aimed at increasing testing and detection of COVID-19 cases. Many of the urban clinics have started collecting samples, and more will soon start collecting. The target is to have 10000 tests by the end of the 14-day lockdown period. Contact tracing is ongoing for all the cases confirmed in the National Capital District and in Lae. WHO is also supporting health care worker risk assessments.
- ❑ **Quarantine:** Additional resources are required to improve monitoring of persons in quarantine, facility assessments and instituting home quarantine.
- ❑ **Case Management:** All confirmed COVID-19 patients are to be isolated at the Rita Flynn Isolation Facility. Provisions for case management are being put in place to ensure capacity for appropriate care and treatment. Surge plan for an additional 300-bed facility using nearby sports facilities had been approved and shall be activated in the next few weeks. The Australian Medical Assistance Team will be deployed to Port Moresby starting on 4 August. The team is comprised of team leader (clinical management consultant), clinical adviser, logistics adviser, primary and emergency care laboratory consultant, public health specialist, epidemiologist and infection prevention and control consultant. The team will conduct needs assessment at Port Moresby General Hospital, Rita Flynn Isolation Facility and other potential field hospitals.

- ❑ **Infection Prevention and Control:** Printing and distribution of the National IPC Policy and Guidelines is underway. The National IPC Technical Working Group shall meet and regular working discussions with the IPC focal points throughout the provinces shall be established. Guidance documents for cleaning and disinfecting are now being finalised and/or distributed: (1) SOP for cleaning and disinfecting health care facilities; (2) one pager for cleaning and disinfecting of non-healthcare facilities (such as bars / gyms / universities / schools, etc.); and; (3) one pager on how to clean and disinfect the home following someone being unwell.
- ❑ **Risk Communication & Non-Pharmaceutical Interventions (NPIs):** Political and community leaders are continuously being engaged. Media, including social media, are being used to encourage behaviour change in hygiene practice, symptoms monitoring, staying at home when feeling unwell and reporting to the national hotline. The Niupela Pasin cluster will follow through the support requested from partners in the enforcement of national pandemic measures and the National Control Centre to monitor weekly progress and compliance against targets on the implementation of the recommended measures by establishments.

## National Transmission Assessment

### 3 – Large-scale community transmission

Cases continue to increase rapidly in Papua New Guinea. Currently, only 35% of the cases have an epidemiological link established. As nearly all new cases have been reported from the National Capital District, community transmission in NCD is indicated. One case reported in Lae in Morobe Province was linked with travel from Port Moresby. Testing in other provinces remains critically low, therefore ongoing transmission in other parts of the country is a possibility as population mobility continues. Importation from bordering Papua Province in Indonesia and incoming travellers from other countries reporting COVID-19 cases also remains a threat. Testing needs to increase substantially to understand the extent of transmission.

### Epi Update COVID-19

Tests	Cases	Deaths	ICU Admissions
<b>528</b>	<b>48</b>	<b>2</b>	<b>3</b>
NAT Tests past 7 days	New cases past 7days	Deaths past 7days	ICU Admissions past 7 days

<b>10471</b>	<b>110</b>	<b>2</b>	<b>6</b>
Cumulative NAT Tests	Cumulative Cases	Cumulative Deaths	Cumulative ICU Admissions

<b>0</b>	<b>18*</b>	<b>4*</b>	<b>*</b>
Imported Cases in past 28 days	Cases in past 28 days with no link	Active Clusters	Active clusters with >3 generations

### Health Service Provision COVID-19

<b>4530</b>	<b>6</b>	<b>1</b>	<b>73</b>	<b>&gt;289</b>
Health care workers trained in COVID19 Case Management	Healthcare worker cases reported past week	Hospitals admitting COVID-19 patients	ICU beds for COVID-19 patients	Non-ICU Hospital beds for COVID19 patients

\* Case investigations are ongoing

## Epidemiology

- Papua Province in Indonesia is continuously reporting COVID-19 cases in areas that border Sandaun and Western Provinces in Papua New Guinea. While the border is officially closed, the threat of case importation from Indonesia remains high. As of 2 August, Papua Province has reported a total of 2976 confirmed cases and 33 deaths (data accessible at <https://covid19.papua.go.id/>).
- Preliminary analysis of COVID-19 cases in the National Capital District shows that majority (60%) of the cases are male. Most of them belong to the 21-50 age group. Only 35% of the cases have found to have contact history with a known case. There are 14 cases that are epidemiologically linked to National Department of Health and National Control Centre. First generation is now detected among healthcare workers to treated cases, as well as among case household contacts.
- Many healthcare workers have been exposed to COVID-19 cases in the past few weeks. A total of 16 cases have been found to have worked directly in health facilities (i.e. laboratory scientists, medical doctors, ward clerks, nurses, medical students).



Figure 1. Locations of Confirmed COVID-19 Cases in Papua New Guinea

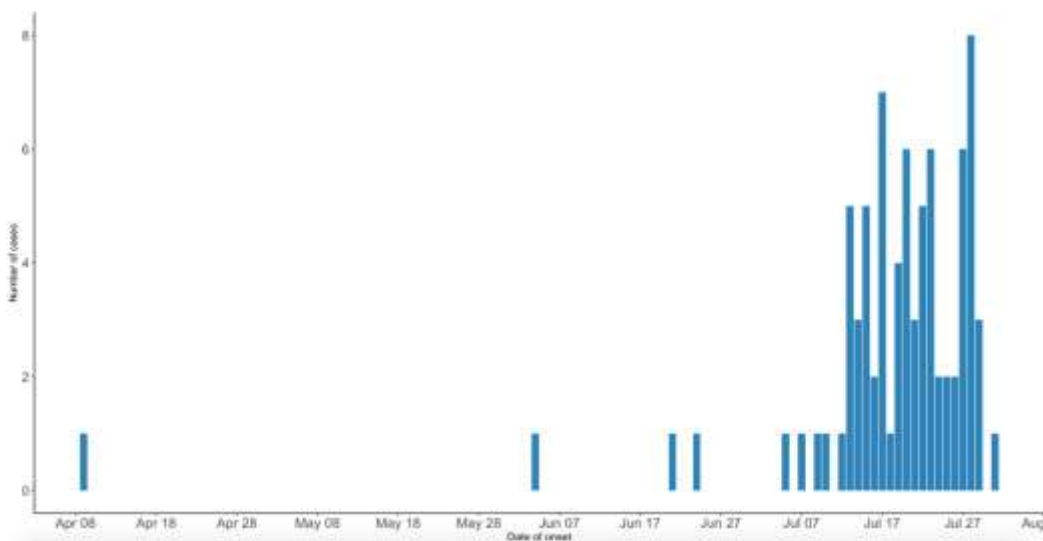


Figure 2. Epi-curve of COVID-19 in the National Capital District, April to 1 August 2020

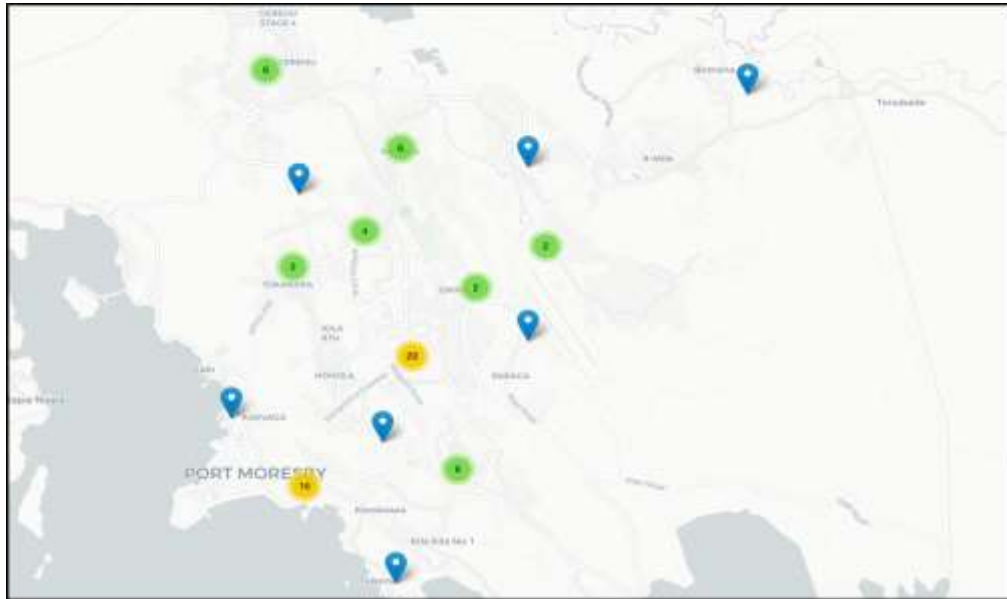


Figure 3. Geographical distribution of confirmed COVID-19 cases in National Capital District and Central Province, April to 30 July 2020

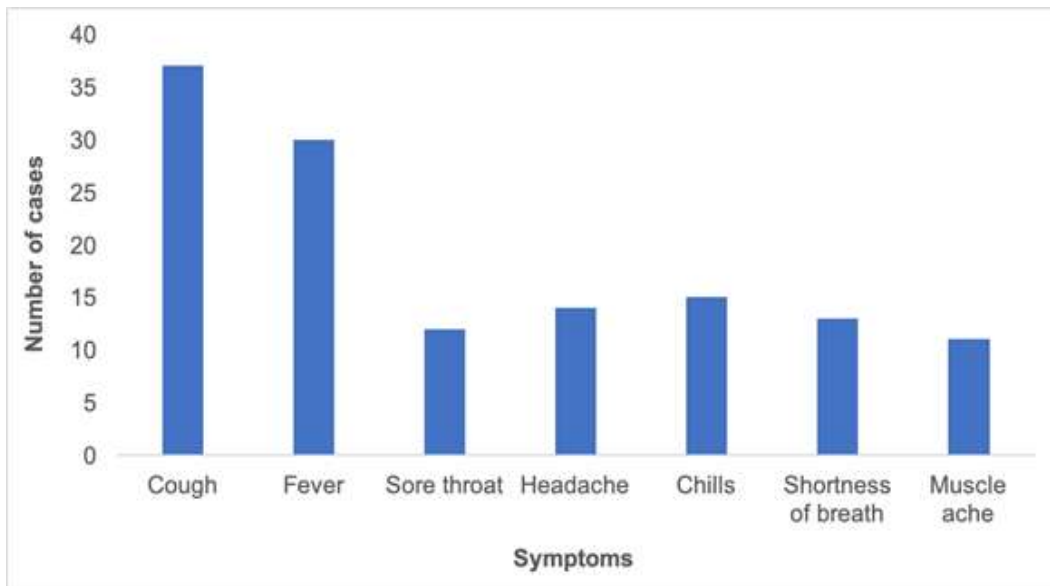


Figure 4. Symptoms presented by confirmed COVID-19 cases in National Capital District

- Majority of the cases continue to show mild clinical presentation. Cough is the most common symptom. About half of those with cough also had fever. Majority of cases did not report other epidemiological criteria often found in COVID-19 case definitions.

## Strategic Approach

### National and Provincial Public Health Response

- The Pandemic Response Coordination Group continues to meet daily. The Health Operations Team is now meeting daily to improve planning and coordination among clusters and stakeholders.
- New National Pandemic Measures were announced and came into effect on 27 July. New orders were introduced in International Travel Measures (No. 2), Domestic Travel Measures (No. 3), COVID-19 Testing Measures (No. 7), and Business and Social Measures (No. 9). Public Transport- Port Moresby (No. 11) was also issued and came into effect on 29 July to stop operation of public transport. Taxis can operate only if drivers and passengers wear masks or face covering but not during curfew hours. The details are in Annex A.
- The Department of Personnel Management (DPM) issued Circular Instruction No.19 of 2020 for scaling down non-essential staff in the public-sector workforce during the 14-day lockdown starting from 28 July 2020. The instruction differentiated the essential and non-essential staff and ordered service continuity under new normal work arrangements. All agency heads were instructed to ensure 'new normal' workplace arrangements and strategies to prevent COVID-19, such as conduct of health monitoring of the staff and provisions for PPE.
- The Ministry of Education issued a press release about the immediate suspension of classes in public and private schools and institutions in the National Capital District for 14 days covering the period of 29 July to 12 August 2020.
- Partners in private, public and NGO sectors are welcome to support the COVID-19 response, especially in Niupela Pasin Cluster to enforce implementation of Niupela Pasin. All partners were requested to contact NDoH, NCC or WHO for coordination of support.

### Surveillance and Points of Entry

- The COVID-19 National Control Centre Hotline (1800200) has adjusted its operations from 6 am to 10 pm. Any medical emergency outside of these hours are referred to the nearest hospital or ambulance services.
- For the period of 25 to 31 July, the COVID-19 National Hotline received 5839 calls. Of the only 186 (3%) health-related calls, 102 (1.7%) were referred to the Rapid Response Team. To date, the Hotline received 84 914 calls.
- Surveillance updates are disseminated daily to provinces by the Surveillance and Epi Team of the National Control Centre.
- Most of the provinces submit daily reports of suspected COVID-19 (including SARI) patients. While completeness of reporting is increasing, sample collection and testing are still not adequate to generate reliable transmission assessment.
- Community-based testing has commenced in Port Moresby as part of the strategy to increase case detection. The NCD Provincial Health Authority (PHA) and several partners supported the setting up of screening areas in urban clinics. The clinics in Koki/Wanigela, Morata, Six Mile, Nine Mile, Gordons, Pari and Badili have started collecting samples for testing.
- A drive-through clinic at the Taurama Aquatic Centre where people with cold and flu symptoms can get tested was set up with support from St John Ambulance, National Department of Health and New Zealand Government.
- PNG Defence Force mobilised a team to support swabbing/sample collection at the urban clinics in NCD.

**Table 3. Persons Screened by Point of Entry**

Total Number of Travelers Screened before SOE (until 22 March)	29 387	
Total Number of Travelers Screened during SOE (23 March – 16 June)	3779	
Total Number of Travelers Screened after SOE (17 June – 31 July)	Air	1853
	Sea*	230
	Land	6
	Total	2089

\* 3 passengers and the rest are crew

### COVID-19 Prevention, Detection and Control

- For the recent cases detected, NCD Provincial Health Authority is leading case investigation and contact tracing with support from the National Control Centre (NCC) and WHO. Health care worker risk assessments are ongoing.
- As of date, there are three cases admitted at the ICU of Port Moresby General Hospital. Of the active cases, there are three severe, three moderate and the rest are mild.

- Given the recent cluster of cases, Port Moresby General Hospital announced scaling down of its services that affected pathology services, surgical services, consultation clinic and all other essential services. Pathology services will maintain urgent tests, including cross matching and blood transfusion services. All elective surgical cases are on hold indefinitely while emergency surgeries will continue to be provided in both general and specialty surgical operations, and obstetrics and gynaecology emergency services. Starting on 20 July, the consultation clinic reduced to seeing no more than 15 patients per clinic. The hospital management directed other essential and specialty services to adopt and maintain new normal practices. It is a priority to support the national referral hospital and other major hospitals in Port Moresby to remain operational.
- St John Ambulance has supported NDoH and NCD PHA in COVID-19 response with ambulance service to respond to, manage and transport persons suspected or confirmed with COVID-19. Since March, their Incident Management Team Structure has been in place to provide: (1) logistical and technical assistance to the National Control Centre and NDOH; (2) awareness on COVID-19 with 10 minute presentations using loud hailers in markets, public places, schools, and government institutions; (3) warehouse management of medical supplies and PPE for NCD PHA and Port Moresby General Hospital in partnership with UNICEF and WHO; (4) continued ambulance services for COVID-19 suspected and confirmed cases; (7) medical care for persons in quarantine by dispatching a nurse, HEO or medical officer for clinical care to persons in quarantine who develop medical problems not related to COVID-19 with out-of-pocket payment from the users; (8) assisting NCD PHA in surveillance and contact tracing; and (9) support in preparation to pilot a drive-through testing centre in Port Moresby.
- With the anticipation that the Rita Flynn Isolation Facility will reach its maximum capacity of 70 soon, the NCD PHA, NCC and partners are working together to convert the Taurama Aquatic Centre to a 300-bed capacity facility.
- NDoH and WHO supported the assessment of Gerehu Hospital on 27 July. Gerehu Hospital was advised in strengthening pre-triage, SOP development and implementation, decentralization of essential services to urban clinics (decluttering of health services), provisions for PPE for health workers, cleaning and disinfection of OPD and Emergency Department, recruitment of short term contractors (health workers) and staff shifts.
- NDoH and WHO supported Port Moresby General Hospital in case management and infection and prevention control. PMGH was advised on arrangements in pre-triage, sample collection area, emergency department, isolation unit and labour ward. On pre-triage, the following were advised: (1) making pre-triage functional for 24 hours; (2) preparing for a waiting area for those who wait for testing results; and (3) continue provision of sanitizers and masks for all staff and symptomatic patients. On testing, it was clarified to swab only symptomatic patients and staff after suspected exposure based on risk assessment. WHO assessed and advised enforcing physical distancing in the sample collection area in the hospital. The Emergency Department was advised to: (1) use appropriate PPE while taking care of suspect or confirmed COVID-19 cases; (2) transport patients as soon as possible, using St John Ambulance; and (3) ask staff to monitor continuously for their symptoms and to stay at home and get tested for COVID-19 if they develop any respiratory symptoms. Furthermore, an isolation unit in PMGH was guided in: (1) reinforcing the unit to be fully functional and supporting clinical management of severe COVID-19 cases; and (2) using PPE properly. It was also recommended to use a buddy system for donning and doffing of PPE. Recommendations for the labour ward included educating staff on IPC, monitoring compliance of staff to IPC and continuing to conduct pre-triage before admission to the ward. A process of PPE distribution to the wards has been under review to ensure availability at all times. WHO advised the hospital to create an area for suspect cases and the plan is in progress. The isolation ward has been fully used for all confirmed patients within PMGH.
- NDoH and WHO shared guidance on cleaning and disinfection of health and non-health facilities to various health and non-health facilities.
- A consultative meeting was held on 31 July between the National Control Centre and the Council of Churches regarding the safe management of the deceased from COVID-19. It was attended by Bishop Denny Buka (Chair of the PNG Council of Churches), Rev Roger Joseph (PNG Council of Churches Secretary General) and Mr Lahui Lovai ( PNG Council of Churches Media Liaison).
- NDoH and WHO have partnered with the Australian Government (DFAT), John Staff and Burnet Institute in launching an essential online training program for healthcare workers in PNG for COVID-19. The training contains practical resources and scenarios that are tailored to the needs of the country, especially for both clinical and administrative staff. See Annex B for the details.

**Table 4. Trainings under the NDOH-UNICEF PNG COVID-19 Emergency Response Project (funded by World Bank)**

No	Province	Date	No. of Batches	No. of Healthcare Workers and Programme Managers Trained
1	Western Highland	23 – 25 June	1	21
2	Jiwaka	30 June – 02 July	2	38
3	Central	06 – 08 July	2	37
4	Simbu	07 – 09 July	1	20
5	Central	27 – 29 July	1	18

**Table 5. Number of Health Care Workers Trained by Province**

Province		Total	Province		Total
No.	MOMASE REGION		No.	NEW GUINEA ISLANDS REGION	
1	Madang	346	12	ARoB	37
2	Morobe	425	13	East New Britain	236
3	East Sepik	92	14	Manus	89
4	West Sepik	200	15	New Ireland	320
<b>No.</b>	<b>HIGHLANDS REGION</b>		16	West New Britain	328
5	Eastern Highlands	114	<b>No.</b>	<b>SOUTHERN REGION</b>	
6	Enga	132	17	Central	331
7	Hela	81	18	Gulf	30
8	Jiwaka	111	19	Milne Bay	94
9	Simbu	20	20	NCD	269
10	Southern Highlands	367	21	Oro	34
11	Western Highlands	803	22	Western	71

**Table 6. Number of Facilities and Beds for COVID-19 as of 02 August 2020**

Health Facilities	Number of Provinces	Number of Facilities	Number of Beds	Provinces that Reported
Pre-triage facilities	18	69	N/A	ARoB, ENB, NI, WNB, ES, Madang, Morobe, WS, EH, Enga, Hela, SH, Central, Gulf, NCD, Oro, Western
Quarantine facilities	14	19	>148	ARoB, ENB, Manus, NI, Madang, Morobe, EH, Hela, Jiwaka, SH, NCD, Oro, Western
Quarantine facilities (underway)	15	18	>107	ARoB, ENB, Manus, WNB, ES, Madang, WS, EH, Hela, SH, WH, Central, Gulf, NCD, Western
Isolation facilities	18	25	>293	ARoB, ENB, Manus, NI, WNB, ES, Madang, Morobe, WS, EH, Hela, Jiwaka, WH, Gulf, MB, NCD, Oro, Western
Isolation facilities (underway)	15	27	> 68	ARoB, Manus, WNB, ES, Madang, Morobe, WS, EH, Enga, Hela, SH, WH, Central, MB, NCD, Oro, Western
Intensive Care Unit	15	16	73	ENB, Manus, WNB, Madang, ES, Morobe, WS, EH, Hela, Simbu, SH, WH, MB, NCD, Western
Autonomous Region of Bougainville (ARoB), East Sepik (ES), East New Britain (ENB), Eastern Highlands (EH), Milne Bay (MB), National Capital District (NCD), New Ireland (NI), Southern Highlands (SH), West New Britain (WNB), Western Highlands (WH), West Sepik (WS)				

## Communication, Community Engagement and Non-Pharmaceutical Interventions (Social Measures) – NIUPELA PASIN

- On 27 July, NDoH and WHO were at the Talk Back Show to discuss COVID-19 situation updates and prevention measures. Key messages emphasized practice recommendations in Niupela Pasin (New Normal): (1) avoiding crowded places and limit time in enclosed spaces; (2) maintaining at least 1.5 m distance from others; (3) open windows and doors for ventilation when possible; (4) keeping hands clean and cover coughs and sneezes; (5) mandatory wearing of face masks in public.
- While the Ministry of Education issued a press release on the suspension of public and private schools and institutions in the National Capital District from 29 July and 12 August 2020, the Ministry directed to continue classes in other provinces and comply with prevention measures, such as washing hands regularly or using hand sanitizers, health monitoring of students with thermometers and maintaining physical distancing.
- The Business Council of Papua New Guinea expressed their support for the implementation of Niupela Pasin by ensuring that their staff wear masks and they implement proper measures. The Council indicated their commitment in dialogue about the implementation of Niupela Pasin and holding the business sector accountable. The dialogue will be held with over 60 business executives, representing 20 business sectors in agriculture, manufacturing, banking, extractives as well as 16 provincial chambers and several districts.
- WASH interventions facilitated by UNICEF continue to benefit students to promote handwashing and good hygiene practices in 44 National Capital District schools. More than 66,000 students (35,027 boys and 31,769 girls) in these 44 schools now have access to hygiene promotion programs supported by the Government of Japan. Twenty eight schools have active hygiene clubs, while twelve schools are still in the process of setting up their hygiene clubs. Key hygiene promotion messages on banners and posters have been distributed to 20 schools, and thirteen schools have received dignity kits. Nine urban clinics in Lae and Goroka have been assessed to determine the scope of work to improve WASH facilities. These health facilities serve a population of approximately 20000 people.
- Through multi-donor support from USAID, the Government of the United Kingdom and European Union, UNICEF have procured 6000 hygiene kits that benefit 20000 people in the four districts of Nawaeb, Goroka, Mt. Hagen and Central Bougainville under the Klinpela Komuniti Projek. These kits also include critical information on gender-based violence and violence against children.
- With support from WHO, UNICEF, USAID, Australian and New Zealand Governments, a public service announcement on Niupela Pasin by the National Department of Health is now airing.
- To promote testing and address stigma against it, a short information video is currently being developed to emphasize the importance of testing for COVID-19 and describe the country's testing strategy. It will show a simulation of the testing process at health facilities to allay fears and anxieties around swabbing. Its airing will commence next week.
- Famous rappers in PNG, Cammy Bee and Sprigga Mek, produced COVID-19 awareness song ("Wok Bung Wantaim") in partnership with NDoH and DFID/UKAid. The song is a mixture of English and Tok Pisin, and advocates for Niupela Pasin, including hygiene and sanitation practices as part of the country's COVID-19 response.
- With the support from the World Bank, UNICEF's project sets the 4-minute song video for 116 spots for primetime airing on FM100, Hot 97 FM, TVWAN and EMTV from 17 July to 16 August. The radio and TV stations take up to 95% of the listenership and viewership throughout the country.

**Table 7. Monitoring of NPIs Implemented in Papua New Guinea**

Social Measures	Monitoring Status					
	Date first implemented	Date last modified	Implementation		Partial lift	Lifted
			Geographical (national or sub-national)	Recommended or Required		
Hand Hygiene and Respiratory Etiquette	16 January*	29 July	National	Recommended		
Wearing Face Masks	29 July		Sub-national**	Required		
School Closure	23 March	28 July	Sub-national**	Required		
Workplace Closure	23 March	4 May	National	Required		√

Mass Gatherings	23 March	28 July	National	Required		
Stay at Home	23 March	28 July	Sub-national**	Required		
Restrictions on Internal Movement (within country)	23 March	23 July	Sub-national**	Required	√***	
Restrictions on International Travel	14 February	23 July	National	Required		

\* First social media post done; \*\* In National Capital District only; \*\*\* AROB has extended its SOE up to 14 August

## Logistics and Supplies

- WHO encourages partners to utilize the COVID-19 Supply Portal accessible at <https://covid-19-response.org/>. The Portal is a purpose-built tool to facilitate requests for critical supplies by national authorities and partners. The requests are assigned to purchasing agencies that can execute the order and process it, utilizing existing ordering systems.
- Resource gaps have been computed for PPEs to cover the next six months up to January 2021. Based on the calculations, it is planned that 20% of the resource requirements will be shouldered by the Government of Papua New Guinea, and the other 80% will be mobilised from partners.

## Funding and Expenditure

- Below is a summary of COVID-19 funding and expenditure by fund source as of 24 July. The table below pertains only to funds that were held and transacted through the NDOH Health Services Improvement Program (HSIP) Trust Account, thus not comprehensive to cover all COVID-19 support made available to the country and provinces through other modalities (e.g. funding through UN Agencies, etc.).
- Total funds received from the Government of Papua New Guinea (GoPNG) 2020 Warrants is PGK 45.3 million. PGK 2.0 million was allocated to NCC activities. Expenditure to date is PGK 38.3 million (PGK 36.8 million for main activities and PGK 1.5 million for NCC activities). Outstanding commitments stand at PGK 6.8 million. Thus, the available funds out of the GoPNG Funds is PGK 160 822. .
- A total of PGK 4.4 million allocated to 22 PHAs was transferred to the provinces via HSIP Subsidiary/Provincial Trust Accounts. Based on expenditure reports received, 97% of GoPNG funds in PHAs have been expended/committed.
- Funds received from New Zealand Aid amounts to PGK 6.29 million. PGK 5.99 million was transferred to the provinces while PGK 308 800 remain in the parent account for monitoring activities.
- Under the HSIP Trust Account, the total available funds from all sources is PGK 4 363 276.

**Table 8. COVID-19 Funding and Expenditure Summary by Fund Source as of 24 July 2020**

No.	Funding Source	Initial Amount	YTD Expend	O/S Commitments	Balance Available
1	GoPNG: NDoH 2019 HIV/AIDS Reprogrammed Funds	3 299 651	2 129 816	635 707	534 128
2	GoPNG COVID-19 Funds 2020 from Treasury 2020	43 300 000	36 818 905	6 481 096	0
3	GoPNG COVID-19 Funds 2020 from Treasury (NOC)	2 000 000	1 482 935	356 243	160 823
4	DFAT Emergency COVID-19 Funding	21 452 845	18 250 000		3 202 845
4	UNICEF Contribution to COVID-19	218 728	133 048		85 680
5	WHO COVID-19 Surveillance Funds (for 22 Provinces)	634 240	634 240		0
6	Private Sponsors	1 181 001	1 108 500	1 500	71 001
7	New Zealand Government	6 298 800	5 990 000		308 800
<b>Total Funds in HSIP</b>		<b>78 385 265</b>	<b>66 547 444</b>	<b>7 474 545</b>	<b>4 363 276</b>

## Best Practice/Lessons Learned

### Response Enabling Factors and Adjustments to the Response

- Testing is critical in assessing the transmission of COVID-19 in the country. With minimal testing and low reporting among the provinces, various aspects of the response remain uninformed. Targeted public messaging is critical to encourage the public to present themselves for testing. The quality and flow of information are also important determinants of successful planning and response.
- Recognising the limitations of the health system, the country takes on a proactive approach in securing additional support. Continuous engagement and coordination with various stakeholders and development partners result to identification of areas of pandemic response where support is required. Partners consistently support procurement of PPE, medical and laboratory supplies to prepare for, detect and respond to the outbreak of COVID-19 in the country. Non-government organizations are also willing to support in community testing, home quarantine and isolation.
- The NCD PHA and National Control Centre, in implementing community-based testing, are engaging community leaders to earn the trust of their respective communities, support crafting appropriate messaging to explain and encourage testing, and ensure safety of healthcare workers deployed to collect samples in the communities. The PNG Defence Force is also supporting to provide additional human resource for swabbing.
- NDoH and partners continue to provide essential health services, including HIV counselling, testing and antiretroviral therapy services, TB treatment and family health services (maternal and child health, family planning and immunization).
- Provincial profiles are regularly updated based on the responses of provincial authorities to the Provincial Preparedness Checklist. Additional sources of information include the records of assessment for medical and non-medical equipment, laboratory diagnostics, health workforce and financial resources from stakeholders and partners. These are helpful in priority actions to address the identified challenges and difficulties experienced by the provinces.
- The COVID-19 response in PNG is updated on the NDOH's website. Weekly national situation report is issued and made accessible at <https://covid19.info.gov.pg/>.

## ANNEX A – National Pandemic Measures Issued on 23 and 24 July 2020

Number	Title	Scope of the National Pandemic Measures Issued on 15 July 2020	Modification in the National Pandemic Measures Issued on 23 July 2020
No. 1	Revocation of all previous measures	Revocation of all previous measures prior to 15 July 2020.	Revocation of all previous measures prior to 23 July.
No. 2	International travel measures	<p>Definition and designation of First Port of Entry; entry of vehicle, vessel or aircraft coming into PNG only through First Port of Entry; entry of persons to PNG (including citizens and permanent residents) by aircraft and vessels; no person is permitted to board an aircraft bound for PNG unless tested for COVID-19 using RT-PCR within 14-day period prior to boarding and have returned negative results; exemption can be given in writing by Controller; suspension of traditional border crossing arrangements (with Indonesia, Australia, FSM, Solomon Islands); boarding of aircraft bound for PNG only with exemption in writing by Controller; quarantine of returning citizens and permanent residents at designated facilities (at Government's cost) or designated hotels (at individuals' cost); quarantine of non-citizens and non-permanent residents at designated hotels (at individuals' cost); self-quarantine of foreign diplomats at appropriate residence for 14 days; approved by the Controller, a person will have seven days quarantine in a designated location in Port Moresby after staying in Queensland, Australia for seven days; persons requiring regular support in daily lives are allowed to be in quarantine with their carer upon arrival overseas together with the suitable arrangement made for accommodation; upon arrival at the designated hotel for quarantine, a person who requires quarantine shall surrender her or his passport to the designated hotel; the hotel is to return the passport upon completion of the quarantine and released by an authorised person; refusal of undertaking the PCR testing will result in extending 14-day quarantine since the date of denial for testing; failure to adhere to self-quarantine as an offence under National Pandemic Act 2020 and declaration as persona non grata of those who fail to comply; quarantine exemption granted by Controller; requirements for compliance for self-isolation and quarantine; conditions for leaving a designated place prior to completion of 14 days; exemption of 23, 24 &amp; 25 for those who travel with a diplomatic travel document or a diplomatic passport; and authorized officials to ensure appropriate levels of surveillance and border monitoring systems.</p>	No modification

No. 3	Domestic travel measures	Conditions for compliance of all domestic flights; no restriction of flights within PNG; non-restriction of travel by foot, vehicle and vessel between provinces; and roadblocks to be established when directed by Controller.	Travellers shall have a valid reason to travel to and from Port Moresby, including: (1) students returning to their usual place of residence or returning to their educational institutions; (2) persons returning to their usual residence; (3) essential services; (4) seeking medical assistance and medical evacuation; and (5) emergency transport, including but not limited to repatriation of deceased persons. All airlines are required to implement the ICAO take off guidelines.
No. 4	Provincial coordination measures	Appointment of Provincial Administrators as authorised officers for implementation of measures in the respective provinces, and the Chief Secretary for ARoB; set-up and composition of Provincial Advisory Committee; the development of Provincial Response Plan consistent with National Response Plan; set up of Provincial Control Centre; daily required reporting of Provincial Administrators to the Controller; observance of safe health and hygiene practices as recommended by NDoH and PHA; and, provisions for provincial authorities to take additional measures such as curfews or fines.	No modification
No. 5	Burial of deceased persons measures	Controller's authority upon request of PMGH or PHA to direct a mass grave, designate its location and direct burial of deceased persons in the designated mass grave as well as requisition of refrigerated shipping containers for the purpose of temporary interment; burial or temporary interment directed by Controller will be at the Government's expense; PMGH or PHA to keep a record of persons interred in a designated grave or designated refrigerated shipping containers taken away from morgue they are responsible for.	No modification
No. 6	Customs duties measures	Exemption from all customs duties and import duties of all incoming medical supplies procured on behalf of the Government until the end of the declaration of the pandemic, and medical supplies shall be given priority and be released without delay.	No modification
No. 7	COVID-19 testing measures	Testing equipment to be used for COVID-19 are RT-PCR, GeneXpert and rapid diagnostic test; approved organizations to conduct testing are NDoH, IMR, PHAs, PMGH, St John Ambulance, OkTedi Mining, Simberi Gold, 2K Medical Clinic, Lihir, K92 Mining, Sky Health and Medical Services and Morobe Consolidated Goldfields Ltd.	No modification
No. 8	COVID-19 surveillance and testing measures	National case definitions of COVID-19 and Severe Acute Respiratory infection (SARI); all hospitalized/ admitted cases of respiratory illness, including pneumonia and all cases of SARI as suspected COVID-19 cases who should be tested within 24 hours of	No modification

		being admitted and to be managed using COVID-19 IPC protocols; all the health facilities listed in Schedule 2 must set up pre-triage service and ensure IPC measures; all health facilities in Port Moresby to collect samples from COVID-19 suspected cases those who are over 10 years old; the swabbing for testing a minimum of five patients with influenza-like illness symptoms per week; The delegate of the Controller is Deputy Controller, Dr Paison Dakulala; and Schedule 2 for health facilities newly added, including all private urban health facilities, all public health facilities classified as Level 3 and above.	
No. 9	Business and social measures	No affiliated sporting codes shall train or participate in matches unless with approval from PNG Sports Foundation; responsibilities of PNG Sports Foundation area requirement to submit a weekly report to the controller; requirements for local religious activities in social distancing and hygiene standards; banning of religious gatherings such as provincial and national church gatherings, crusades, conventions and provincial or national outreach programmes; licensed gambling venues, nightclub, horse racing at listed venues to operate on Wednesdays, Thursdays, Fridays and Saturdays; and ban on gatherings of over 100 persons.	Closures of nightclubs; hand hygiene and other hygiene measures are to be practiced at venues or part of the venues operates for the sales and consumption of alcohol; mandatory wearing of masks or face covering for all the sports event spectators; lifted restriction for licensed gambling venues.
<b>Number</b>	<b>Title</b>	<b>Scope of the National Pandemic Measures Issued on 24 July 2020</b>	
No. 10	Mandatory Mask Wearing in Port Moresby	Mandatory mask wearing in Port Moresby effective on 29 July 2020. The measures specified wearing masks or face coverings in enclosed space in establishments (business establishments, health facilities, sporting venues, places of worship, community centres, libraries art galleries, museums, zoos and other similar facilities, convention centres arenas, stadiums, and other event spaces, and government facilities) aircraft, public transport (busses, vessels and taxis), and designated markets. Child care facilities schools and banks are exempted from the establishments for the purpose of these measures. Also, there are exemptions for wearing masks for those who are: (1) children under 12; (2) persons with underlying medical conditions which inhibit their ability to wear a mask or face covering, including persons with physical or mental illness or impairment, or disability; (3) persons who are unable to place or remove a mask or face covering without assistance; (4) persons undergoing dental treatment or other medical care to be the extent that the procedure requires that no face covering may be worn; (5) persons within an area of work designated for them and not for public access, and who can work in an environment whereby they work a minimum of 2 metres from any other persons; (6) persons participating in sporting activities; (7) when directed to remove the face covering to ascertain identity; and (8) during emergencies. Furthermore, people are exempted and remove masks and face coverings to eat, drink or take medication. It is an offence under the National Pandemic Act 2020 to: (1) fail to take reasonable steps to ensure adherence to the measures for a business, organization or government department or agency; and (2) remove a mask or a face covering on aircraft.	

## ANNEX B – COVID-19 Healthcare E-Learning Platform (CoHELP)

# CoHELP

## COVID-19 Healthcare E-Learning Platform

How do we tackle COVID-19 in PNG health services?



### Be prepared for COVID-19

The WHO (PNG) and PNG National Department of Health have partnered with the Australian Government (DFAT) to develop an essential online training program for healthcare workers in PNG to be prepared for an outbreak of COVID-19.

This training has been developed for both clinical and administrative staff across PNG. The training contains practical resources and scenario training that are tailored to the needs of PNG.

The entire platform can be accessed from your smartphone, tablet or computer. You will have access to:

- Recorded lectures
- Interactive trainings
- Practical resources
- Discussion forums
- Weekly live training seminars with Q&A's with expert lecturers
- Certification as you complete training modules

Topics include:

- Introduction to COVID-19
- Infection Control Basics
- Principles of outbreak control
- Infection Control Advanced
- Clinical Management Basics
- Clinical Management Advanced

- Emergency Department Management
- Adapting Essential Services
- Obstetrics and Gynaecology in COVID-19
- Adapting Child Health Services
- Critical Care during COVID-19
- Nursing theatre management
- Diagnostics and testing
- Interactive Scenarios

If not all the topics are relevant to you simply skip ahead and complete the modules that are useful to you. You will receive certification for each module you complete so you do not have to complete every module.

**To access the training all you have to do is sign up at <https://cohelp.learnbook.com.au/> by the 31st of July!**

From there you can get involved with all of the activities and use the resources on the platform. If, you are having issues signing up or would like more information on the program please email us. We can send you sign up instructions and give you an introduction to the platform.

Email: [cohelpadmin@johnstaff.com.au](mailto:cohelpadmin@johnstaff.com.au)

Don't miss out on this essential training promoted and developed by the National Department of Health and World Health Organisation (PNG).

**Get on the front foot with COVID-19, don't wait for an outbreak! Ask questions, learn and prepare now.**



The Covid- 19 E-Learning Platform (CoHELP) is brought to you by the Australian Government in partnership with the Government of Papua New Guinea and implemented by:



## ANNEX C – COVID-19 Enhanced Testing Strategy for Health Facilities in PNG

### COVID-19 Testing

Collect nasopharyngeal swabs from at least 10 patients daily in each health facility (provincial and district hospitals, urban clinics and private clinics) who present and with any of the below criteria:

#### Test ALL PATIENTS presenting at health facilities meeting the COVID-19 case definition.

##### COVID-19 suspected cases

- Collect nasopharyngeal swab specimen for COVID-19 testing from all persons that fit the COVID-19 case definition.
- Collect nasopharyngeal swab specimen for COVID-19 testing from all persons presenting with pneumonia (inpatient or outpatient) or severe acute respiratory illness (SARI).

#### Test SOME PATIENTS each day presenting with the following:

##### Influenza-Like Illness

- Collect nasopharyngeal swab specimen for COVID-19 testing from persons presenting with Influenza-like Illness (only a few each day per health facility, and no more than 10 per facility).

##### Simple cough

- Collect nasopharyngeal swab specimen for COVID-19 testing from persons presenting with simple cough (only a few each day per health facility, and no more than 10 per facility).

#### Post-mortem specimen collection from a patient who had respiratory illness before death

For a death in which the patient had respiratory illness and a specimen was not collected before death, collect the following postmortem specimen:

- Collect post-mortem Nasopharyngeal Swab specimen for COVID-19 testing as soon as possible.
- Specimen can be collected up to 3 days after death as virus may still be detected; however, sensitivity may be reduced with a longer post-mortem interval

#### Testing of confirmed cases for discharge from isolation

##### No test required for discharge

Criteria for discharging patients from isolation (i.e. discontinuing transmission-based precautions) without requiring retesting:

- For symptomatic patients: 10 days after symptom onset, plus at least 3 additional days without symptoms (including without fever and without respiratory symptoms)
- For asymptomatic cases: 10 days after positive test for SARS-CoV-2

### **COVID-19 test reporting**

- For every sample collected for COVID-19 testing, a COVID-19 Case Investigation Form (CIF) must be completed.
- Based on the presentation of the individual being tested, indicate on the CIF the reason for testing.
- Notify the Provincial Health Authority (PHA) Surveillance Team of any COVID-19 suspected case and notify the PDCO/DDCO immediately for pick-up of collected specimens or need for rapid response team (RRT) response.
- The PHA surveillance team will deliver/ship samples to CPHL/IMR.
- It is recommended that PHA have an inventory of UTM and PPE distribution to avoid stock out. A health facility must notify the PHA Surveillance Team in advance of a stock out of UTMs, CIFs or contact line-lists.
- If there is a case in which a clinician has high clinical suspicion of COVID-19, write "FOR URGENT TESTING" on the top of the CIF and notify the PDCO, CPHL and the National Surveillance Team.

Contact the National Surveillance Team on: [outbreaks@health.gov.pg](mailto:outbreaks@health.gov.pg)

#### **Rosheila Dagina**

National COVID-19 Surveillance Cluster Lead

Phone: 7992 7439

Email: [rdagina@gmail.com](mailto:rdagina@gmail.com)

## ANNEX D – Provincial Updates

### New Guinea Islands Region

#### Autonomous Region of Bougainville

As of 26 July 2020

<b>Total Provincial Population (2020)</b>	344,162	
<b>COVID-19 Response Management</b>		
Established and functioning Provincial Control Centre	-	
Established and functioning Provincial Emergency Operations Centre	✓	
<b>Surveillance</b>		
Receiving alerts from rural health centres	✓	
Presence of provincial COVID-19 hotlines	✓	
No. of rapid response teams	3	
No. of contact tracing teams	3	
No. of quarantine teams	-	
<b>Laboratory and Waste Management</b>		
No. of available UTMs / total received	-	
No. of functioning GeneXpert machines	2 (Arawa & Buka)	
No. of available GeneXpert cartridges / total received	-	
No. of GeneXpert – trained staff	-	
No. of functioning biosafety cabinets	-	
No. of functioning incinerators	-	
<b>Health Facilities</b>		
	<b>No. of Facilities</b>	<b>No. of Beds</b>
Pre-triage sites	3 (Buka, Kieta & Arawa)	N/A
Quarantine facilities	1	28
Quarantine facilities (in progress)	1	12
Isolation facilities	1	8
Isolation facilities (in progress)	3	>4
ICU	-	-
ICU (in progress)	1 (Buka Hospital)	4
<b>Critical Care</b>		
No. of nurses trained in critical care	6	
No. of anaesthetists/anaesthetic scientific officer	0/3	
No. of functioning ventilators	-	
No. of functioning oxygen concentrators	-	

Staff Strength and Health Care Worker Training	Number	COVID-19 trained
No. of doctors	10	-
No. of nurses and midwives	94	-
No. of health extension officers	3	-
No. of community health workers	71	-
<b>TOTAL</b>	<b>178</b>	<b>37</b>

PPE Supplies Received	Received in April 2020	Received in May 2020	Received in June 2020	Stock on hand
N95 Masks	300	1,500	700	-
Surgical Masks	0	4,000	8,000	-
Goggles	0	200	200	-
Gloves	65,000	10,000	1,000	-
Gowns/Coveralls	180	0	160	-

Finance	Allocated (in PGK)	Expended (in PGK)
DFAT	950,000	-
MFAT	350,000	-
WHO	26,420	-
GoPNG	200,000	-
Provincial funds	-	-
HSIP	200,000	-

#### Accomplishments and activities

- Development partners received training on COVID-19 and IEC materials for prevention of COVID-19 and access to health services.
- Opening of Buka Market on 4 July with handwashing facilities at the entrance.

#### Challenges

## East New Britain

As of 2 August 2020

<b>Total Provincial Population (2020)</b>	375,875	
<b>COVID-19 Response Management</b>		
Established and functioning Provincial Control Centre	✓	
Established and functioning Provincial Emergency Operations Centre	✓	
<b>Surveillance</b>		
Receiving alerts from rural health centres	✓	
Presence of provincial COVID-19 hotlines	✓	
No. of rapid response teams	3 (Kokopo, Rabaul & Gazelle)	
No. of contact tracing teams	3	
No. of quarantine teams	3	
<b>Laboratory and Waste Management</b>		
No. of available UTMs / total received	50 / 1400	
No. of functioning GeneXpert machines	2	
No. of available GeneXpert cartridges / total received	45/50	
No. of GeneXpert – trained staff	5 (3 male, 2 female)	
No. of functioning biosafety cabinets	2	
No. of functioning incinerators	1	
<b>Health Facilities</b>		
	<b>No. of Facilities</b>	<b>No. of Beds</b>
Pre-triage sites	5 (Nonga hospital, Butuwin UC, Vunapope, Warangoi & Kerevat)	N/A
Quarantine facilities	1 (Butuwin UC)	3
Quarantine facilities (in progress)	1 (Renovation of the Hunter Town Lodge)	36
Isolation facilities	1 (Butuwin UC)	5
Isolation facilities (in progress)	-	-
ICU	1	3
ICU (in progress)	-	-
<b>Critical Care</b>		
No. of nurses trained in critical care	16	
No. of anaesthetists/anaesthetic scientific officer	2/7	
No. of functioning ventilators	-	
No. of functioning oxygen concentrators	-	

Staff Strength and Health Care Worker Training	Number	COVID-19 trained
No. of doctors	19	6
No. of nurses and midwives	254	-
No. of health extension officers	23	-
No. of community health workers	257	-
<b>TOTAL</b>	<b>553</b>	<b>236</b>

PPE Supplies Received	Received in April 2020	Received in May 2020	Received in June 2020	Stock on hand
N95 Masks	1,500	1,500	0	500
Surgical Masks	0	4,000	16,000	7,800
Goggles	0	200	200	51
Gloves	55,600	8,000	1,000	42
Gowns/Coveralls	330	100	160	39

Finance	Allocated (in PGK)	Expended (in PGK)
DFAT	950,000	-
MFAT	350,000	-
WHO	27,440	-
GoPNG	200,000	200,000
Provincial funds	2,500,000	-
Others	-	-

### Accomplishments and activities

- A containerized health clinic arrived at Butuwin Health Centre for connection to main power and water as well as other light work for completion. This assistance is from the Government of Australia and NDoH.
- ENB PHA received a donation of antibiotics and wheelchairs from Dame Sandra Lao and Tropicana Limited. The donations were made to Nonga General Hospital, Saint Mary's Hospital and the Butuwin Health Centre on 30 July 2020.

### Challenges

## Manus

As of 26 July 2020

<b>Total Provincial Population (2020)</b>	66,918	
<b>COVID-19 Response Management</b>		
Established and functioning Provincial Control Centre	-	
Established and functioning Provincial Emergency Operations Centre	✓	
<b>Surveillance</b>		
Receiving alerts from rural health centres	-	
Presence of provincial COVID-19 hotlines	✓	
No. of rapid response teams	2	
No. of contact tracing teams	2	
No. of quarantine teams	2	
<b>Laboratory and Waste Management</b>		
No. of available UTM's / total received	- / 120	
No. of functioning GeneXpert machines	1 (Lorengau Hospital)	
No. of available GeneXpert cartridges / total received	49/50	
No. of GeneXpert – trained staff	-	
No. of functioning biosafety cabinets	-	
No. of functioning incinerators	-	
<b>Health Facilities</b>		
	<b>No. of Facilities</b>	<b>No. of Beds</b>
Pre-triage sites	0	N/A
Quarantine facilities	-	24
Quarantine facilities (in progress)	1	8
Isolation facilities	1	-
Isolation facilities (in progress)	-	2
ICU	1	-
ICU (in progress)	-	-
<b>Critical Care</b>		
No. of nurses trained in critical care	-	
No. of anaesthetists/anaesthetic scientific officer	0/1	
No. of functioning ventilators	-	
No. of functioning oxygen concentrators	-	

<b>Staff Strength and Health Care Worker Training</b>	<b>Number</b>	<b>COVID-19 trained</b>		
No. of doctors	6	-		
No. of nurses and midwives	64	-		
No. of health extension officers	13	-		
No. of community health workers	81	-		
<b>TOTAL</b>	<b>164</b>	<b>89</b>		
<b>PPE Supplies Received</b>				
	<b>Received in April 2020</b>	<b>Received in May 2020</b>	<b>Received in June 2020</b>	<b>Stock on hand</b>
N95 Masks	230	150	350	-
Surgical Masks	0	5,500	8,000	-
Goggles	0	200	262	-
Gloves	22,000	10,000	4,000	-
Gowns/Coveralls	210	-	60	-
<b>Finance</b>				
	<b>Allocated (in PGK)</b>	<b>Expended (in PGK)</b>		
DFAT	450,000	-		
MFAT	250,000	-		
WHO	13,840	-		
GoPNG	200,000	-		
Provincial funds	-	-		
HSIP	200,000	-		
<b>Accomplishments and activities</b>				
<b>Challenges</b>				

## New Ireland

As of 26 July 2020

<b>Total Provincial Population (2020)</b>	218,472	
<b>COVID-19 Response Management</b>		
Established and functioning Provincial Control Centre	-	
Established and functioning Provincial Emergency Operations Centre	✓	
<b>Surveillance</b>		
Receiving alerts from rural health centres	-	
Presence of provincial COVID-19 hotlines	✓	
No. of rapid response teams	4 (2 in PHA/District & 2 in Lihir and Siyebi)	
No. of contact tracing teams	4	
No. of quarantine teams	4	
<b>Laboratory and Waste Management</b>		
No. of available UTMs / total received	- / 240	
No. of functioning GeneXpert machines	2 (Kavieng Hospital & Lihir Medical Centre)	
No. of available GeneXpert cartridges / total received	50/50	
No. of GeneXpert – trained staff	-	
No. of functioning biosafety cabinets	-	
No. of functioning incinerators	-	
<b>Health Facilities</b>		
	<b>No. of Facilities</b>	<b>No. of Beds</b>
Pre-triage sites	6	N/A
Quarantine facilities	1	-
Quarantine facilities (in progress)	-	-
Isolation facilities	1	6
Isolation facilities (in progress)	-	-
ICU	-	-
ICU (in progress)	-	-
<b>Critical Care</b>		
No. of nurses trained in critical care	8	
No. of anaesthetists/anaesthetic scientific officer	0/2	
No. of functioning ventilators	-	
No. of functioning oxygen concentrators	-	

Staff Strength and Health Care Worker Training	Number	COVID-19 trained
No. of doctors	16	-
No. of nurses and midwives	209	-
No. of health extension officers	31	-
No. of community health workers	192	-
<b>TOTAL</b>	<b>448</b>	<b>320</b>

PPE Supplies Received	Received in April 2020	Received in May 2020	Received in June 2020	Stock on hand
N95 Masks	280	1,500	0	-
Surgical Masks	0	4,000	2,000	-
Goggles	0	200	200	-
Gloves	18,000	8,000	1,000	-
Gowns/Coveralls	210	-	110	-

Finance	Allocated (in PGK)	Expended (in PGK)
DFAT	450,000	-
MFAT	250,000	-
WHO	23,360	-
GoPNG	200,000	-
Provincial funds	-	-
HSIP	200,000	-

<b>Accomplishments and activities</b>
---------------------------------------

<b>Challenges</b>
-------------------

## West New Britain

As of 26 July 2020

<b>Total Provincial Population (2020)</b>	348,596	
<b>COVID-19 Response Management</b>		
Established and functioning Provincial Control Centre	-	
Established and functioning Provincial Emergency Operations Centre	✓	
<b>Surveillance</b>		
Receiving alerts from rural health centres	-	
Presence of provincial COVID-19 hotlines	✓	
No. of rapid response teams	2	
No. of contact tracing teams	2	
No. of quarantine teams	2	
<b>Laboratory and Waste Management</b>		
No. of available UTMs / total received	- / 260	
No. of functioning GeneXpert machines	2 (Kimbe Hospital & Biaka District Hospital)	
No. of available GeneXpert cartridges / total received	50/50	
No. of GeneXpert – trained staff	-	
No. of functioning biosafety cabinets	-	
No. of functioning incinerators	-	
<b>Health Facilities</b>		
	<b>No. of Facilities</b>	<b>No. of Beds</b>
Pre-triage sites	3 (Town Urban Clinic, Kimbe Hospital & Mutuvel Sporting Stadium)	N/A
Quarantine facilities	-	-
Quarantine facilities (in progress)	1 (Mutuvel Sporting Stadium)	-
Isolation facilities	1	3
Isolation facilities (in progress)	1	6
ICU	1	1
ICU (in progress)	1	2
<b>Critical Care</b>		
No. of nurses trained in critical care	6	
No. of anaesthetists/anaesthetic scientific officer	0/2	
No. of functioning ventilators	-	
No. of functioning oxygen concentrators	-	

<b>Staff Strength and Health Care Worker Training</b>	<b>Number</b>	<b>COVID-19 trained</b>		
No. of doctors	15	-		
No. of nurses and midwives	171	-		
No. of health extension officers	52	-		
No. of community health workers	247	-		
<b>TOTAL</b>	<b>485</b>	<b>328</b>		
<b>PPE Supplies</b>				
<b>Received</b>	<b>Received in April 2020</b>	<b>Received in May 2020</b>	<b>Received in June 2020</b>	<b>Stock on hand</b>
N95 Masks	180	1,500	0	-
Surgical Masks	0	4,000	10,000	-
Goggles	0	200	200	-
Gloves	30,000	10,000	1,000	-
Gowns/Coveralls	180	0	10	-
<b>Finance</b>				
	<b>Allocated (in PGK)</b>	<b>Expended (in PGK)</b>		
DFAT	450,000	-		
MFAT	350,000	-		
WHO	22,680	-		
GoPNG	200,000	-		
Provincial funds	600,000	-		
HSIP	200,000	-		
<b>Accomplishments and activities</b>				
<b>Challenges</b>				

## Momase Region

### East Sepik

As of 26 July 2020

<b>Total Provincial Population (2020)</b>	644,053	
<b>COVID-19 Response Management</b>		
Established and functioning Provincial Control Centre	-	
Established and functioning Provincial Emergency Operations Centre	✓	
<b>Surveillance</b>		
Receiving alerts from rural health centres	✓	
Presence of provincial COVID-19 hotlines	✓	
No. of rapid response teams	1	
No. of contact tracing teams	1	
No. of quarantine teams	1	
<b>Laboratory and Waste Management</b>		
No. of available UTMs / total received	- / 400	
No. of functioning GeneXpert machines	2 (Boram & Maenki)	
No. of available GeneXpert cartridges / total received	- / 50	
No. of GeneXpert – trained staff	2	
No. of functioning biosafety cabinets	-	
No. of functioning incinerators	-	
<b>Health Facilities</b>		
	<b>No. of Facilities</b>	<b>No. of Beds</b>
Pre-triage sites	8 (Town Urban Clinic, At the districts with 7 tents & 1 for Boram Hospital)	N/A
Quarantine facilities	-	-
Quarantine facilities (in progress)	1 (Guest house)	-
Isolation facilities	1 (Old TB clinic refurbished)	-
Isolation facilities (in progress)	1 (Moem Barracks)	-
ICU	-	-
ICU (in progress)	1 (at the Hospital)	-
<b>Critical Care</b>		
No. of nurses trained in critical care	14	
No. of anaesthetists/anaesthetic scientific officer	1/3	
No. of functioning ventilators	-	
No. of functioning oxygen concentrators	-	

Staff Strength and Health Care Worker Training	Number	COVID-19 trained
No. of doctors	17	-
No. of nurses and midwives	158	-
No. of health extension officers	21	-
No. of community health workers	243	-
<b>TOTAL</b>	<b>439</b>	<b>92</b>

PPE Supplies Received	Received in April 2020	Received in May 2020	Received in June 2020	Stock on hand
N95 Masks	60	1,500	0	60
Surgical Masks	0	4,000	4,000	14,300
Goggles	0	200	200	185
Gloves	26,000	10,000	1,000	20,900
Gowns/Coveralls	180		10	991

Finance	Allocated (in PGK)	Expended (in PGK)
DFAT	950,000	-
MFAT	350,000	-
WHO	37,640	-
GoPNG	200,000	200,000
Provincial funds	-	-
Others	-	-

<b>Accomplishments and activities</b>
<b>Challenges</b>

## Madang

As of 2 August 2020

<b>Total Provincial Population (2020)</b>	719,869	
<b>COVID-19 Response Management</b>		
Established and functioning Provincial Control Centre	-	
Established and functioning Provincial Emergency Operations Centre	✓	
<b>Surveillance</b>		
Receiving alerts from rural health centres	-	
Presence of provincial COVID-19 hotlines	✓	
No. of rapid response teams	2	
No. of contact tracing teams	1	
No. of quarantine teams	1	
<b>Laboratory and Waste Management</b>		
No. of available UTMs / total received	- / 260	
No. of functioning GeneXpert machines	4 (Modilon Hospital 2, Gaubin 1 and Malala Health Centre 1)	
No. of available GeneXpert cartridges / total received	- / 50	
No. of GeneXpert – trained staff	2	
No. of functioning biosafety cabinets	-	
No. of functioning incinerators	-	
<b>Health Facilities</b>		
	<b>No. of Facilities</b>	<b>No. of Beds</b>
Pre-triage sites	1	N/A
Quarantine facilities	1 (Modilon Hospital)	12
Quarantine facilities (in progress)	1	-
Isolation facilities	1 (Yagum Hospital)	18
Isolation facilities (in progress)	1	-
ICU	1	5
ICU (in progress)	-	-
<b>Critical Care</b>		
No. of nurses trained in critical care	3	
No. of anaesthetists/anaesthetic scientific officer	1/3	
No. of functioning ventilators	-	
No. of functioning oxygen concentrators	-	

Staff Strength and Health Care Worker Training	Number	COVID-19 trained
No. of doctors	22	-
No. of nurses and midwives	223	-
No. of health extension officers	28	-
No. of community health workers	390	-
<b>TOTAL</b>	<b>663</b>	<b>346</b>

PPE Supplies Received	Received in April 2020	Received in May 2020	Received in June 2020	Stock on hand
N95 Masks	180	1,500	0	-
Surgical Masks	0	4,000	12,000	-
Goggles	0	200	200	-
Gloves	18,000	5,000	1,000	-
Gowns/Coveralls	15	0	10	-

Finance	Allocated (in PGK)	Expended (in PGK)
DFAT	950,000	-
MFAT	170,000	-
WHO	37,640	-
GoPNG	200,000	-
Provincial funds	-	-
Others	-	-

Accomplishments and activities (reporting period)
<ul style="list-style-type: none"> <li>Had our point of entry procedures rectified and emergency cases to be given prompt attention at hospital.</li> <li>Set up an isolation point-of-care area for COVID-19 cases outside of the hospital area.</li> <li>Set up isolation facility for COVID-19 case management, including OT services and O&amp;G services.</li> <li>Clinical pathways to be drawn and made clear to all health workforce.</li> <li>Infection prevention and control measures and protocols to be stringent and put into place for all to comply with.</li> <li>Surveillance, rapid response and risk assessment to continue daily with reporting.</li> <li>Command Centre to be rectified and supported.</li> <li>Budget breakup of DFAT fund needs to be reviewed.</li> </ul>

Challenges

## Morobe

As of 26 July 2020

<b>Total Provincial Population (2020)</b>	926,452	
<b>COVID-19 Response Management</b>		
Established and functioning Provincial Control Centre	-	
Established and functioning Provincial Emergency Operations Centre	✓	
<b>Surveillance</b>		
Receiving alerts from rural health centres	-	
Presence of provincial COVID-19 hotlines	✓	
No. of rapid response teams	2	
No. of contact tracing teams	2	
No. of quarantine teams	2	
<b>Laboratory and Waste Management</b>		
No. of available UTMs / total received	-/ 460	
No. of functioning GeneXpert machines	5 (2 in Angau Hospital, 1 in Bulolo, 1 in Halcost & 1 in Mutzing)	
No. of available GeneXpert cartridges / total received	-/ 50	
No. of GeneXpert – trained staff	-	
No. of functioning biosafety cabinets	-	
No. of functioning incinerators	-	
<b>Health Facilities</b>		
	<b>No. of Facilities</b>	<b>No. of Beds</b>
Pre-triage sites	>5 (Milfordhaven Urban clinic, Bulmo Urban Clinic, Lae International Hospital, GM Flores Hospital, Ijam Barracks, Morobe District Hospitals and health centres)	N/A
Quarantine facilities	3	47 (12 in 11-Mile (MKW), 32 in Morobe District & 3 in Bulolo District)
Quarantine facilities (in progress)	-	-
Isolation facilities	2 (St Ignatius Kilage Stadium & Bulolo District)	>120
Isolation facilities (in progress)	1	8
ICU	2 (St Ignatius Kilage Stadium & Bulolo District)	19
ICU (in progress)	-	-

<b>Critical Care</b>				
No. of nurses trained in critical care	30			
No. of anaesthetists/anaesthetic scientific officer	4/2			
No. of functioning ventilators	-			
No. of functioning oxygen concentrators	-			
<b>Staff Strength and Health Care Worker Training</b>				
	<b>Number</b>	<b>COVID-19 trained</b>		
No. of doctors	48	-		
No. of nurses and midwives	443	-		
No. of health extension officers	11	-		
No. of community health workers	143	-		
<b>TOTAL</b>	<b>645</b>	<b>425</b>		
<b>PPE Supplies Received</b>				
	<b>Received in April 2020</b>	<b>Received in May 2020</b>	<b>Received in June 2020</b>	<b>Stock on hand</b>
N95 Masks	420	1,500	0	500
Surgical Masks	0	4,000	17,100	5000
Goggles	0	200	200	50
Gloves	37,000	5,000	2,000	3,300
Gowns/Coveralls	240	0	20	700
<b>Finance</b>				
	<b>Allocated (in PGK)</b>		<b>Expended (in PGK)</b>	
DFAT	1,900,000		-	
MFAT	170,000		-	
WHO	46,820		-	
GoPNG	200,000		-	
Provincial funds	-		-	
Others	-		-	
<b>Accomplishments and activities</b>				
<ul style="list-style-type: none"> <li>Morobe PHA met all the district health managers and several district administrators to provide COVID-19 updates. The districts reported the development of SOPs and set up of space for case management for COVID-19.</li> <li>District health teams also placed at point of entry at seaports, Nadzab, Mutzing and Bulolo Airport.</li> <li>Procurement has been done for Morobe for COVID-19 Hospital (St Ignatius Kilage Stadium). The facility is equipped. The clinical team and the corporate service team completed preparations and the facility will be operational from the week of 27 July.</li> <li>Morobe PHA encourages the community to immunize children under five years old for routine immunization.</li> </ul>				
<b>Challenges</b>				

## Sandaun

As of 2 August 2020

<b>Total Provincial Population (2020)</b>	316,533	
<b>COVID-19 Response Management</b>		
Established and functioning Provincial Control Centre	-	
Established and functioning Provincial Emergency Operations Centre	✓	
<b>Surveillance</b>		
Receiving alerts from rural health centres	✓	
Presence of provincial COVID-19 hotlines	✓	
No. of rapid response teams	1	
No. of contact tracing teams	1	
No. of quarantine teams	1	
<b>Laboratory and Waste Management</b>		
No. of available UTMs / total received	- / 400	
No. of functioning GeneXpert machines	2 (Raihu District Hospital and Vanimo Hospital)	
No. of available GeneXpert cartridges / total received	- / 50	
No. of GeneXpert – trained staff	-	
No. of functioning biosafety cabinets	-	
No. of functioning incinerators	-	
<b>Health Facilities</b>		
	<b>No. of Facilities</b>	<b>No. of Beds</b>
Pre-triage sites	4	N/A
Quarantine facilities	-	-
Quarantine facilities (in progress)	1 (Weather Service)	13
Isolation facilities	1	4
Isolation facilities (in progress)	2	-
ICU	0	0
ICU (in progress)	-	-
<b>Critical Care</b>		
No. of nurses trained in critical care	7	
No. of anaesthetists/anaesthetic scientific officer	- / 2	
No. of functioning ventilators	-	
No. of functioning oxygen concentrators	-	

Staff Strength and Health Care Worker Training	Number	COVID-19 trained
No. of doctors	10	-
No. of nurses and midwives	119	-
No. of health extension officers	19	-
No. of community health workers	332	-
<b>TOTAL</b>	<b>480</b>	<b>200</b>

PPE Supplies Received	Received in April 2020	Received in May 2020	Received in June 2020	Stock on hand
N95 Masks	60	1,500	120	1,547
Surgical Masks	0	4,000	4,000	4,720
Goggles	0	200	200	286
Gloves	26,000	10,000	1,000	1,141
Gowns/Coveralls	180	0	310	469/53

Finance *	Allocated (in PGK)	Expended (in PGK)
DFAT	950,000	-
NFAT	392,000	-
WHO	29,480	-
GoPNG	200,000	200,000
DPLGA	100,000	-
Sandaun Provincial Government	25,000	-
WSPHA Trust Account	400,000	400,000
WSPHA- 252 (HFG)	200,000	-

\*About 50% of budget planned on average.

### Accomplishments and activities

- Referral pathway has been identified, with mild and moderate cases planning to be treated at the local health facilities and severe cases at SPH isolation unit.
- WSPHA looks for available facilities as isolation facilities in response to potential increase in COVID-19 cases in the province.
- Awareness on COVID-19 was done at Sandaun Provincial Assembly on 28 July 2020.
- Stockpile of PPE is in the WSPHA PEOC PPE room.

### Challenges

- Continuing surveillance with increased movement of people at the point of entry from Green River to Wutung
- Continuing ongoing surveillance, following-up with ILI triaging at POE health facilities, and monitoring suspected cases of AFR and ILI/SARI at Bewani HC in the Vanimo Green District
- Medical equipment identified for the isolation unit are still to be purchased such as ventilators

## Highlands Region

### Eastern Highlands

As of 26 July 2020

<b>Total Provincial Population (2020)</b>	717,957	
<b>COVID-19 Response Management</b>		
Established and functioning Provincial Control Centre	-	
Established and functioning Provincial Emergency Operations Centre	✓	
<b>Surveillance</b>		
Receiving alerts from rural health centres	-	
Presence of provincial COVID-19 hotlines	✓	
No. of rapid response teams	2	
No. of contact tracing teams	-	
No. of quarantine teams	-	
<b>Laboratory and Waste Management</b>		
No. of available UTMs / total received	- / 240	
No. of functioning GeneXpert machines	4 (3 in Highlands Provincial & 1 in Kainantu District Hospital)	
No. of available GeneXpert cartridges / total received	- / 50	
No. of GeneXpert – trained staff	-	
No. of functioning biosafety cabinets	-	
No. of functioning incinerators	-	
<b>Health Facilities</b>		
	<b>No. of Facilities</b>	<b>No. of Beds</b>
Pre-triage sites	1	N/A
Quarantine facilities	1 (Goroka Hospital)	14
Quarantine facilities (in progress)	1 (at pediatric ward)	16-18
Isolation facilities	1	5
Isolation facilities (in progress)	1	6
ICU	1 (Goroka Hospital)	12
ICU (in progress)	-	-
<b>Critical Care</b>		
No. of nurses trained in critical care	60	
No. of anaesthetists/anaesthetic scientific officer	3/9	
No. of functioning ventilators	-	
No. of functioning oxygen concentrators	-	

<b>Staff Strength and Health Care Worker Training</b>	<b>Number</b>	<b>COVID-19 trained</b>		
No. of doctors	28	-		
No. of nurses and midwives	222	-		
No. of health extension officers	15	-		
No. of community health workers	371	-		
<b>TOTAL</b>	<b>636</b>	<b>114</b>		
<b>PPE Supplies Received</b>	<b>Received in April 2020</b>	<b>Received in May 2020</b>	<b>Received in June 2020</b>	<b>Stock on hand</b>
N95 Masks	230	1,500	0	-
Surgical Masks	0	4,000	25,600	-
Goggles	0	200	200	-
Gloves	36,000	10,000	1,000	-
Gowns/Coveralls	150	0	10	-
<b>Finance</b>	<b>Allocated (in PGK)</b>	<b>Expended (in PGK)</b>		
DFAT	950,000	-		
MFAT	210,000	-		
WHO	38,320	-		
GoPNG	200,000	-		
Provincial funds	2,500,000	-		
Others	-	-		
<b>Accomplishments and activities</b>				
<b>Challenges</b>				

## Enga

As of 26 July 2020

<b>Total Provincial Population (2020)</b>	480,691	
<b>COVID-19 Response Management</b>		
Established and functioning Provincial Control Centre	-	
Established and functioning Provincial Emergency Operations Centre	✓	
<b>Surveillance</b>		
Receiving alerts from rural health centres	-	
Presence of provincial COVID-19 hotlines	-	
No. of rapid response teams	-	
No. of contact tracing teams	-	
No. of quarantine teams	-	
<b>Laboratory and Waste Management</b>		
No. of available UTMs / total received	- / 240	
No. of functioning GeneXpert machines	2 (Kompiam District Hospital and Wabag Provincial Hospital)	
No. of available GeneXpert cartridges / total received	- / 50	
No. of GeneXpert – trained staff	-	
No. of functioning biosafety cabinets	-	
No. of functioning incinerators	-	
<b>Health Facilities</b>		
	<b>No. of Facilities</b>	<b>No. of Beds</b>
Pre-triage sites	1 (Wabag Hospital)	N/A
Quarantine facilities	-	-
Quarantine facilities (in progress)	-	-
Isolation facilities	-	-
Isolation facilities (in progress)	1 (Pausa in Wapenamanda)	-
ICU	-	-
ICU (in progress)	-	-
<b>Critical Care</b>		
No. of nurses trained in critical care	8	
No. of anaesthetists/anaesthetic scientific officer	- / 5	
No. of functioning ventilators	-	
No. of functioning oxygen concentrators	-	

<b>Staff Strength and Health Care Worker Training</b>		<b>Number</b>	<b>COVID-19 trained</b>	
No. of doctors		21	-	
No. of nurses and midwives		163	-	
No. of health extension officers		18	-	
No. of community health workers		226	-	
<b>TOTAL</b>		<b>428</b>	<b>132</b>	
<b>PPE Supplies Received</b>	<b>Received in April 2020</b>	<b>Received in May 2020</b>	<b>Received in June 2020</b>	<b>Stock on hand</b>
N95 Masks	150	1,500	0	-
Surgical Masks	0	4,000	4,000	-
Goggles	0	200	200	-
Gloves	18,000	10,000	1,000	-
Gowns/Coveralls	150	0	460	-
<b>Finance</b>		<b>Allocated (in PGK)</b>	<b>Expended (in PGK)</b>	
DFAT		450,000	-	
MFAT		210,000	-	
WHO		31,520	-	
GoPNG		200,000	-	
Provincial funds		-	-	
Others		-	-	
<b>Accomplishments and activities</b>				
<b>Challenges</b>				

## Hela

As of 26 July 2020

<b>Total Provincial Population (2020)</b>	304,955	
<b>COVID-19 Response Management</b>		
Established and functioning Provincial Control Centre	-	
Established and functioning Provincial Emergency Operations Centre	✓	
<b>Surveillance</b>		
Receiving alerts from rural health centres	✓	
Presence of provincial COVID-19 hotlines	✓	
No. of rapid response teams	1	
No. of contact tracing teams	-	
No. of quarantine teams	-	
<b>Laboratory and Waste Management</b>		
No. of available UTMs / total received	- / 50	
No. of functioning GeneXpert machines	1 (Hela Provincial Hospital)	
No. of available GeneXpert cartridges / total received	- / 50	
No. of GeneXpert – trained staff	-	
No. of functioning biosafety cabinets	-	
No. of functioning incinerators	-	
<b>Health Facilities</b>		
	<b>No. of Facilities</b>	<b>No. of Beds</b>
Pre-triage sites	1 (Hela Provincial Hospital)	N/A
Quarantine facilities	3	-
Quarantine facilities (in progress)	1	-
Isolation facilities	3	>6
Isolation facilities (in progress)	7	-
ICU	1	6
ICU (in progress)	-	-
<b>Critical Care</b>		
No. of nurses trained in critical care	8	
No. of anaesthetists/anaesthetic scientific officer	- / 5	
No. of functioning ventilators	-	
No. of functioning oxygen concentrators	-	

Staff Strength and Health Care Worker Training	Number	COVID-19 trained
No. of doctors	2	-
No. of nurses and midwives	52	-
No. of health extension officers	8	-
No. of community health workers	45	-
<b>TOTAL</b>	<b>107</b>	<b>81</b>

PPE Supplies Received	Received in April 2020	Received in May 2020	Received in June 2020	Stock on hand
N95 Masks	300	1,500	-	-
Surgical Masks	0	4,000	4,000	-
Goggles	0	200	200	-
Gloves	16,000	10,000	1,000	-
Gowns/Coveralls	80	0	160	-

Finance	Allocated (in PGK)	Expended (in PGK)
DFAT	450,000	-
MFAT	350,000	-
WHO	24,720	-
GoPNG	200,000	-
Provincial funds	424,000	-
Others**	300,000	-

\*\*TARI PORI DOA DSP & Kororo Margarina DOA DSP

<b>Accomplishments and activities</b>
<b>Challenges</b>

## Jiwaka

as of 26 July 2020

<b>Total Provincial Population (2020)</b>	332,619	
<b>COVID-19 Response Management</b>		
Established and functioning Provincial Control Centre	-	
Established and functioning Provincial Emergency Operations Centre	-	
<b>Surveillance</b>		
Receiving alerts from rural health centres	-	
Presence of provincial COVID-19 hotlines	-	
No. of rapid response teams	-	
No. of contact tracing teams	-	
No. of quarantine teams	-	
<b>Laboratory and Waste Management</b>		
No. of available UTMs / total received	- / 250	
No. of functioning GeneXpert machines	1 (Kudjib Nazarene Hospital)	
No. of available GeneXpert cartridges / total received	- / 50	
No. of GeneXpert – trained staff	-	
No. of functioning biosafety cabinets	-	
No. of functioning incinerators	-	
<b>Health Facilities</b>		
	<b>No. of Facilities</b>	<b>No. of Beds</b>
Pre-triage sites	-	N/A
Quarantine facilities	1 (Kindeng)	-
Quarantine facilities (in progress)	-	-
Isolation facilities	4 (Kindeng, Mirij HC, Kol HC, Tabibuga HC)	-
Isolation facilities (in progress)	-	-
ICU	-	-
ICU (in progress)	-	-
<b>Critical Care</b>		
No. of nurses trained in critical care	1	
No. of anaesthetists/anaesthetic scientific officer	- / 4	
No. of functioning ventilators	-	
No. of functioning oxygen concentrators	-	

<b>Staff Strength and Health Care Worker Training</b>	<b>Number</b>	<b>COVID-19 trained</b>		
No. of doctors	1	-		
No. of nurses and midwives	146	-		
No. of health extension officers	8	-		
No. of community health workers	102	-		
<b>TOTAL</b>	<b>257</b>	<b>73</b>		
<b>PPE Supplies Received</b>	<b>Received in April 2020</b>	<b>Received in May 2020</b>	<b>Received in June 2020</b>	<b>Stock on hand</b>
N95 Masks	180	1,500	0	-
Surgical Masks	0	4,000	4,000	-
Goggles	0	200	200	-
Gloves	18,000	10,000	1,000	-
Gowns/Coveralls	150	0	310	-
<b>Finance</b>	<b>Allocated (in PGK)</b>	<b>Expended (in PGK)</b>		
DFAT	450,000	-		
MFAT	300,000	-		
WHO	23,700	-		
GoPNG	200,000	-		
Provincial funds	-	-		
Others	-	-		
<b>Accomplishments and activities</b>				
<b>Challenges</b>				

## Simbu

As of 2 August 2020

<b>Total Provincial Population (2020)</b>	378,381	
<b>COVID-19 Response Management</b>		
Established and functioning Provincial Control Centre	-	
Established and functioning Provincial Emergency Operations Centre	✓	
<b>Surveillance</b>		
Receiving alerts from rural health centres	✓	
Presence of provincial COVID-19 hotlines	-	
No. of rapid response teams	1	
No. of contact tracing teams	1	
No. of quarantine teams	-	
<b>Laboratory and Waste Management</b>		
No. of available UTMs / total received	- / 240	
No. of functioning GeneXpert machines	2 (Mingende Rural Hospital & Kundawa General Hospital)	
No. of available GeneXpert cartridges / total received	- / 50	
No. of GeneXpert – trained staff	-	
No. of functioning biosafety cabinets	-	
No. of functioning incinerators	-	
<b>Health Facilities</b>		
	<b>No. of Facilities</b>	<b>No. of Beds</b>
Pre-triage sites	-	N/A
Quarantine facilities	-	-
Quarantine facilities (in progress)	-	-
Isolation facilities	-	-
Isolation facilities (in progress)	-	-
ICU	1	3
ICU (in progress)	-	-
<b>Critical Care</b>		
No. of nurses trained in critical care	6	
No. of anaesthetists/anaesthetic scientific officer	- / 4	
No. of functioning ventilators	-	
No. of functioning oxygen concentrators	-	

Staff Strength and Health Care Worker	Number	COVID-19 trained
<b>Training</b>		
No. of doctors	30	-
No. of nurses and midwives	305	-
No. of health extension officers	15	-
No. of community health workers	197	-
<b>TOTAL</b>	<b>547</b>	<b>-</b>

PPE Supplies Received	Received in April 2020	Received in May 2020	Received in June 2020	Stock on hand *
N95 Masks	180	1,500	-	7650
Surgical Masks	0	4,000	4,000	150
Goggles	0	200	200	2
Gloves	12,000	10,000	1,000	22,800
Gowns/Coveralls	180	0	360	225

\*Updated on 5 May 2020

Finance	Allocated (in PGK)	Expended (in PGK)
DFAT	450,000	-
MFAT	350,000	-
WHO	33,560	-
GoPNG	200,000	200,000
Provincial funds	-	-
Others	-	-

<b>Accomplishments and activities</b>
<b>Challenges</b>

## Southern Highlands

As of 26 July 2020

<b>Total Provincial Population (2020)</b>	651,001	
<b>COVID-19 Response Management</b>		
Established and functioning Provincial Control Centre	-	
Established and functioning Provincial Emergency Operations Centre	✓	
<b>Surveillance</b>		
Receiving alerts from rural health centres	✓	
Presence of provincial COVID-19 hotlines	-	
No. of rapid response teams	1	
No. of contact tracing teams	5	
No. of quarantine teams	5	
<b>Laboratory and Waste Management</b>		
No. of available UTMs / total received	- / 40	
No. of functioning GeneXpert machines	2 (Mendi Provincial Hospital and Ialibu District Hospital)	
No. of available GeneXpert cartridges / total received	- / 50	
No. of GeneXpert – trained staff	40	
No. of functioning biosafety cabinets	-	
No. of functioning incinerators	-	
<b>Health Facilities</b>		
	<b>No. of Facilities</b>	<b>No. of Beds</b>
Pre-triage sites	3	N/A
Quarantine facilities	1 (Kiburu Lodge)	10
Quarantine facilities (in progress)	1	-
Isolation facilities	-	-
Isolation facilities (in progress)	2 (MDR-TB Isolation Ward & Munihui HC)	-
ICU	1	6
ICU (in progress)	-	-

<b>Critical Care</b>	
No. of nurses trained in critical care	9
No. of anaesthetists/anaesthetic scientific officer	- / 5
No. of functioning ventilators	-
No. of functioning oxygen concentrators	-

<b>Staff Strength and Health Care Worker Training</b>	<b>Number</b>	<b>COVID-19 trained</b>
No. of doctors	18	-
No. of nurses and midwives	151	-
No. of health extension officers	10	-
No. of community health workers	189	-
<b>TOTAL</b>	<b>368</b>	<b>367</b>

<b>PPE Supplies Received</b>	<b>Received in April 2020</b>	<b>Received in May 2020</b>	<b>Received in June 2020</b>	<b>Stock on hand</b>
N95 Masks	250	1,500	-	-
Surgical Masks	0	4,000	4,000	-
Goggles	0	200	200	-
Gloves	37,000	8,000	1,000	-
Gowns/Coveralls	180	0	410	-

<b>Finance</b>	<b>Allocated (in PGK)</b>	<b>Expended (in PGK)</b>
DFAT	450,000	-
MFAT	350,000	-
WHO	34,240	-
GoPNG	200,000	-
Provincial funds	500,000	-
Others	-	-

<b>Accomplishments and activities</b>
---------------------------------------

<b>Challenges</b>
-------------------

## Western Highlands

As of 2 August 2020

<b>Total Provincial Population (2020)</b>	442,638	
<b>COVID-19 Response Management</b>		
Established and functioning Provincial Control Centre	✓	
Established and functioning Provincial Emergency Operations Centre	✓	
<b>Surveillance</b>		
Receiving alerts from rural health centres	-	
Presence of provincial COVID-19 hotlines	-	
No. of rapid response teams	1	
No. of contact tracing teams	1	
No. of quarantine teams	1	
<b>Laboratory and Waste Management</b>		
No. of available UTMs / total received	350/ 350	
No. of functioning GeneXpert machines	1 (MHH)	
No. of available GeneXpert cartridges / total received	46	
No. of GeneXpert – trained staff	2	
No. of functioning biosafety cabinets	1	
No. of functioning incinerators	1 (needs urgent replacement)	
<b>Health Facilities</b>		
	<b>No. of Facilities</b>	<b>No. of Beds</b>
Pre-triage sites	2	N/A
Quarantine facilities	1	10
Quarantine facilities (in progress)	1	10
Isolation facilities	1	11
Isolation facilities (in progress)	-	-
ICU	1	4
ICU (in progress)	0	0
<b>Critical Care</b>		
No. of nurses trained in critical care	30	
No. of anaesthetists/anaesthetic scientific officer	5 ATOs	
No. of functioning ventilators	1	
No. of functioning oxygen concentrators	7	

Staff Strength and Health Care Worker Training	Number	COVID-19 trained
No. of doctors	22	5
No. of nurses and midwives	13	55
No. of health extension officers	217	2
No. of community health workers	293	50
<b>TOTAL</b>	<b>545</b>	<b>112</b>

PPE Supplies Received	Received in April 2020	Received in May 2020	Received in June 2020	Stock on hand
N95 Masks	100	1,500	7,000	1,500
Surgical Masks	0	4,000	20,000	16,000
Goggles	0	200	267	226
Gloves	11,000	10,000	3,000	75,000
Gowns/Coveralls	90	0	610	1,350

Finance	Allocated (in PGK)	Expended (in PGK)
DFAT	1,900,000	870,000
MFAT	170,000	-
WHO	29,480	29,480
GoPNG	200,000	200,000
Provincial funds	200,000	200,000
Others	-	-

### Accomplishments and activities

- Rolling out rural COVID response plan, subject to release of additional provincial or GoPNG funds. NZ funds are fully committed – expenditure in progress.
- Tenders for concrete and in ground works for quarantine shed closed on 24 July 2020.
- Isolation unit in a converted chapel is ready at MHH including one (1) delivery room although awaiting handwashing tubs.
- Quarantine beds are ready, including one (1) delivery room.
- Quarantine facility is available with 10-bed capacity, but no funds to purchase beds and WHPHA is looking for old beds.

### Challenges

- The forms are not filled by travellers or no forms provided.
- Financial shortfalls and PPEs

## Southern Region

### Central

As of 26 July 2020

<b>Total Provincial Population (2020)</b>	317,847	
<b>COVID-19 Response Management</b>		
Established and functioning Provincial Control Centre	-	
Established and functioning Provincial Emergency Operations Centre	✓	
<b>Surveillance</b>		
Receiving alerts from rural health centres	✓	
Presence of provincial COVID-19 hotlines	✓	
No. of rapid response teams	-	
No. of contact tracing teams	-	
No. of quarantine teams	-	
<b>Laboratory and Waste Management</b>		
No. of available UTMs / total received	-/ 40	
No. of functioning GeneXpert machines	2 (Kwikila & Bereina District Hospital)	
No. of available GeneXpert cartridges / total received	-/ 20	
No. of GeneXpert – trained staff	-	
No. of functioning biosafety cabinets	-	
No. of functioning incinerators	-	
<b>Health Facilities</b>		
	<b>No. of Facilities</b>	<b>No. of Beds</b>
Pre-triage sites	3 (Abau District Hospital, Bereina District Hospital and Verfa'a Hospital)	N/A
Quarantine facilities	-	-
Quarantine facilities (in progress)	1 (Bereina District Hospital)	-
Isolation facilities	-	-
Isolation facilities (in progress)	2 (Abau District Hospital & Bereina District Hospital)	-
ICU	-	-
ICU (in progress)	-	-

<b>Critical Care</b>				
No. of nurses trained in critical care	9			
No. of anaesthetists/anaesthetic scientific officer	-/ 5			
No. of functioning ventilators	-			
No. of functioning oxygen concentrators	-			
<b>Staff Strength and Health Care Worker Training</b>				
No. of doctors	0		-	
No. of nurses and midwives	13		-	
No. of health extension officers	35		-	
No. of community health workers	198		-	
<b>TOTAL</b>	<b>246</b>		<b>276</b>	
<b>PPE Supplies Received</b>				
	<b>Received in April 2020</b>	<b>Received in May 2020</b>	<b>Received in June 2020</b>	<b>Stock on hand</b>
N95 Masks	230	1,500	420	-
Surgical Masks	0	5,000	2,200	-
Goggles	0	200	210	-
Gloves	27,000	13,000	2,000	-
Gowns/Coveralls	210	30	450	-
<b>Finance</b>				
	<b>Allocated (in PGK)</b>	<b>Expended (in PGK)</b>		
DFAT	450,000	-		
MFAT	170,000	-		
WHO	32,880	-		
GoPNG	200,000	200,000		
Provincial funds	-	-		
Others	-	-		
<b>Accomplishments and activities</b>				
<b>Challenges</b>				

## Gulf

As of 26 July 2020

<b>Total Provincial Population (2020)</b>	190,153	
<b>COVID-19 Response Management</b>		
Established and functioning Provincial Control Centre	-	
Established and functioning Provincial Emergency Operations Centre	✓	
<b>Surveillance</b>		
Receiving alerts from rural health centres	✓	
Presence of provincial COVID-19 hotlines	✓	
No. of rapid response teams	-	
No. of contact tracing teams	-	
No. of quarantine teams	-	
<b>Laboratory and Waste Management</b>		
No. of available UTMs / total received	-/ 230	
No. of functioning GeneXpert machines	3 (Kerema Provincial Hospital, Kapuna Rural Hospital & Kikori District Hospital)	
No. of available GeneXpert cartridges / total received	-/ 30	
No. of GeneXpert – trained staff	-	
No. of functioning biosafety cabinets	-	
No. of functioning incinerators	-	
<b>Health Facilities</b>		
	<b>No. of Facilities</b>	<b>No. of Beds</b>
Pre-triage sites	1 (Kerema Hospital)	N/A
Quarantine facilities	-	-
Quarantine facilities (in progress)	3 (Kanabea, Kerema & Kikori)	-
Isolation facilities	1	-
Isolation facilities (in progress)	-	-
ICU	-	-
ICU (in progress)	-	-

<b>Critical Care</b>				
No. of nurses trained in critical care	1			
No. of anaesthetists/anaesthetic scientific officer	-/ 2			
No. of functioning ventilators	-			
No. of functioning oxygen concentrators	-			
<b>Staff Strength and Health Care Worker Training</b>				
	<b>Number</b>	<b>COVID-19 trained</b>		
No. of doctors	6	-		
No. of nurses and midwives	48	-		
No. of health extension officers	8	-		
No. of community health workers	88	-		
<b>TOTAL</b>	<b>150</b>	<b>30</b>		
<b>PPE Supplies Received</b>				
	<b>Received in April 2020</b>	<b>Received in May 2020</b>	<b>Received in June 2020</b>	<b>Stock on hand</b>
N95 Masks	180	1,500	700	-
Surgical Masks	0	8,100	6,500	-
Goggles	0	200	220	-
Gloves	15,000	10,000	5,000	-
Gowns/Coveralls	180	20	656	-
<b>Finance</b>				
	<b>Allocated (in PGK)</b>	<b>Expended (in PGK)</b>		
DFAT	450,000	-		
MFAT	350,000	-		
WHO	18,940	-		
GoPNG	200,000	200,000		
Provincial funds	-	-		
Others	-	-		
<b>Accomplishments and activities</b>				
<b>Challenges</b>				

## Milne Bay

As of 26 July 2020

<b>Total Provincial Population (2020)</b>	347,546	
<b>COVID-19 Response Management</b>		
Established and functioning Provincial Control Centre	-	
Established and functioning Provincial Emergency Operations Centre	✓	
<b>Surveillance</b>		
Receiving alerts from rural health centres	✓	
Prevalence of provincial COVID-19 hotlines	✓	
No. of rapid response teams	1	
No. of contact tracing teams	-	
No. of quarantine teams	-	
<b>Laboratory and Waste Management</b>		
No. of available UTMs / total received	-/260	
No. of functioning GeneXpert machines	1	
No. of available GeneXpert cartridges / total received	-/50	
No. of GeneXpert – trained staff	-	
No. of functioning biosafety cabinets	-	
No. of functioning incinerators	-	
<b>Health Facilities</b>		
	<b>No. of Facilities</b>	<b>No. of Beds</b>
Pre-triage sites	-	N/A
Quarantine facilities	-	-
Quarantine facilities (in progress)	-	-
Isolation facilities	1 (Alotau Hospital)	7
Isolation facilities (in progress)	1	-
ICU	1	2
ICU (in progress)	-	-
<b>Critical Care</b>		
No. of nurses trained in critical care	20	
No. of anaesthetists/anaesthetic scientific officer	1/2	
No. of functioning ventilators	-	
No. of functioning oxygen concentrators	-	

<b>Staff Strength and Health Care Worker Training</b>	<b>Number</b>	<b>COVID-19 trained</b>		
No. of doctors	20	-		
No. of nurses and midwives	264	-		
No. of health extension officers	29	-		
No. of community health workers	493	-		
<b>TOTAL</b>	<b>806</b>	<b>94</b>		
<b>PPE Supplies Received</b>	<b>Received in April 2020</b>	<b>Received in May 2020</b>	<b>Received in June 2020</b>	<b>Stock on hand</b>
N95 Masks	180	1,500	1,500	-
Surgical Masks	0	5,000	2,000	-
Goggles	0	200	200	-
Gloves	18,000	10,000	1,000	-
Gowns/Coveralls	180	30	860	-
<b>Finance</b>	<b>Allocated (in PGK)</b>	<b>Expended (in PGK)</b>		
DFAT	950,000	-		
MFAT	300,000	-		
WHO	31,520	-		
GoPNG	200,000	200,000		
Provincial funds	-	-		
Others	-	-		
<b>Accomplishments and activities</b>				
<b>Challenges</b>				

## National Capital District

As of 26 July 2020

<b>Total Provincial Population (2020)</b>	449,469	
<b>COVID-19 Response Management</b>		
Established and functioning Provincial Control Centre	-	
Established and functioning Provincial Emergency Operations Centre	✓	
<b>Surveillance</b>		
Receiving alerts from rural health centres	✓	
Presence of provincial COVID-19 hotlines	✓	
No. of rapid response teams	1	
No. of contact tracing teams	1	
No. of quarantine teams	-	
<b>Laboratory and Waste Management</b>		
No. of available UTMs / total received	-/900	
No. of functioning GeneXpert machines	3 (Bereina HC, CPHL & Lawes Rd UC)	
No. of available GeneXpert cartridges / total received	-/450	
No. of GeneXpert – trained staff	-	
No. of functioning biosafety cabinets	-	
No. of functioning incinerators	-	
<b>Health Facilities</b>		
	<b>No. of Facilities</b>	<b>No. of Beds</b>
Pre-triage sites	18 (16 Public clinics, Gerehu & PMGH)	N/A
Quarantine facilities	1	-
Quarantine facilities (in progress)	2	-
Isolation facilities	1 (Rita Flynn)	76
Isolation facilities (in progress)	1	6
ICU	1 (PMGH)	4
ICU (in progress)	-	-

<b>Critical Care</b>				
No. of nurses trained in critical care	135			
No. of anaesthetists/anaesthetic scientific officer	7/2			
No. of functioning ventilators	-			
No. of functioning oxygen concentrators	-			
<b>Staff Strength and Health Care Worker Training</b>				
No. of doctors	244	-		
No. of nurses and midwives	704	-		
No. of health extension officers	6	-		
No. of community health workers	282	-		
<b>TOTAL</b>	<b>1236</b>	<b>94</b>		
<b>PPE Supplies Received</b>				
	<b>Received in April 2020</b>	<b>Received in May 2020</b>	<b>Received in June 2020</b>	<b>Stock on hand</b>
N95 Masks	180	3,000	5,160	-
Surgical Masks	0	4,000	114,000	-
Goggles	0	-	570	-
Gloves	12,000	8,000	22,120	-
Gowns/Coveralls	60	-	4,796	-
<b>Finance</b>				
	<b>Allocated (in PGK)</b>	<b>Expended (in PGK)</b>		
DFAT	1,900,000	-		
MFAT	170,000	-		
WHO	23,320	-		
GoPNG	200,000	-		
Provincial funds	-	-		
Others	-	-		
<b>Accomplishments and activities</b>				
<b>Challenges</b>				

## Oro

As of 26 July 2020

<b>Total Provincial Population (2020)</b>	236,700	
<b>COVID-19 Response Management</b>		
Established and functioning Provincial Control Centre	-	
Established and functioning Provincial Emergency Operations Centre	✓	
<b>Surveillance</b>		
Receiving alerts from rural health centres	✓	
Presence of provincial COVID-19 hotlines	✓	
No. of rapid response teams	1	
No. of contact tracing teams	1	
No. of quarantine teams	-	
<b>Laboratory and Waste Management</b>		
No. of available UTMs / total received	-/260	
No. of functioning GeneXpert machines	1	
No. of available GeneXpert cartridges / total received	-/50	
No. of GeneXpert – trained staff	-	
No. of functioning biosafety cabinets	-	
No. of functioning incinerators	-	
<b>Health Facilities</b>		
	<b>No. of Facilities</b>	<b>No. of Beds</b>
Pre-triage sites	1 (Siroga HC)	N/A
Quarantine facilities	2 (Popondetta Hospital & Siroga HC)	-
Quarantine facilities (in progress)	-	-
Isolation facilities	1 (Old Dental Area)	-
Isolation facilities (in progress)	1 (Popondetta Hospital)	8
ICU	-	-
ICU (in progress)	-	-
<b>Critical Care</b>		
No. of nurses trained in critical care	4	
No. of anaesthetists/anaesthetic scientific officer	-/2	
No. of functioning ventilators	-	
No. of functioning oxygen concentrators	-	

<b>Staff Strength and Health Care Worker Training</b>	<b>Number</b>	<b>COVID-19 trained</b>		
No. of doctors	10	-		
No. of nurses and midwives	80	-		
No. of health extension officers	9	-		
No. of community health workers	107	-		
<b>TOTAL</b>	<b>206</b>	<b>34</b>		
<b>PPE Supplies Received</b>	<b>Received in April 2020</b>	<b>Received in May 2020</b>	<b>Received in June 2020</b>	<b>Stock on hand</b>
N95 Masks	180	1,500	900	-
Surgical Masks	0	4,000	2,000	-
Goggles	0	200	200	-
Gloves	18,000	-	1,000	-
Gowns/Coveralls	210	30	210	-
<b>Finance</b>	<b>Allocated (in PGK)</b>	<b>Expended (in PGK)</b>		
DFAT	450,000	-		
MFAT	300,000	-		
WHO	18,260	-		
GoPNG	200,000	200,000		
Provincial funds	-	-		
Others	-	-		
<b>Accomplishments and activities</b>				
<b>Challenges</b>				

## Western

As of 26 July 2020

<b>Total Provincial Population (2020)</b>	299,351	
<b>COVID-19 Response Management</b>		
Established and functioning Provincial Control Centre	✓	
Established and functioning Provincial Emergency Operations Centre	✓	
<b>Surveillance</b>		
Receiving alerts from rural health centres	✓	
Presence of provincial COVID-19 hotlines	✓	
No. of rapid response teams	1	
No. of contact tracing teams	Not active	
No. of quarantine teams	1	
<b>Laboratory and Waste Management</b>		
No. of available UTMs / total received	-/1650	
No. of functioning GeneXpert machines	2 out of 3 working	
No. of available GeneXpert cartridges / total received	99/150	
No. of GeneXpert – trained staff	3	
No. of functioning biosafety cabinets	0 (the existing one is out of order)	
No. of functioning incinerators	0	
<b>Health Facilities</b>		
	<b>No. of Facilities</b>	<b>No. of Beds</b>
Pre-triage sites	8 (Daru, Kiunga, Balimo, Rumgimac)	N/A
Quarantine facilities	1 (Daru Provincial Hospital)	-
Quarantine facilities (in progress)	1	12
Isolation facilities	2 (Daru Provincial Hospital & Kiunga District Hospital)	24
Isolation facilities (in progress)	2 (medical equipment to be fitted)	28
ICU	1	4
ICU (in progress)	0	0
<b>Critical Care</b>		
No. of nurses trained in critical care	2	
No. of anaesthetists/anaesthetic scientific officer	1/5	
No. of functioning ventilators	0	
No. of functioning oxygen concentrators	-	

Staff Strength and Health Care Worker Training	Number	COVID-19 trained
No. of doctors	9	7
No. of nurses and midwives	19	21
No. of health extension officers	2	4
No. of community health workers	40	33
<b>TOTAL</b>	<b>70</b>	<b>65</b>

PPE Supplies Received	Received in April 2020	Received in May 2020	Received in June 2020	Stock on hand
N95 Masks	40	3,000	800	-
Surgical Masks	0	8,000	20,000	-
Goggles	0	400	400	-
Gloves	25,000	16,000	2,000	-
Gowns/Coveralls	180	200	820	-

Finance	Allocated (in PGK)	Expended (in PGK)
DFAT	950,000	-
MFAT	170,000	-
WHO	28,460	-
GoPNG	200,000	140,000
Provincial funds	-	-
Others	-	-

### Accomplishments and activities

- PEOC is in Daru, and the team is not meeting regularly according to a report. Kiunga team meets regularly on a weekly basis or when the need arises.
- Reporting is only done in Daru for ILI/SARI. According to Kiunga team Lead, pre-triage has not reported any ILI /SARI therefore not reported. Teams were advised to report POIs from Indonesia or PNG citizens crossing the border.

### Challenges

- Team Kiunga indicated a reduction in human resources engaged in RRT and quarantine due to non-payments.
- Daru quarantine tents were pulled down. The agreement was for 3 months and now the 3 months is up, they were advised to pull the tents down.
- Apart from COVID-19 preparedness and response, Kiunga team indicated challenges with medical supplies, with orders from 2019 still pending. What was received weeks ago was from 2014 orders which are now outdated.
- Oxygen supply to Kiunga Hospital is not available. This has caused the hospital to scale down on operation. Contractors have delays in delivering the oxygen supply.
- Expenditure is still slow due to change of signatories. So far, the only fund expended was the K200,000 given for surveillance, training and risk communication.

## ANNEX E – Photos



Photos 1-4. Virtual meeting of Prime Minister Hon James Marape and WHO Director-General Dr Tedros Adhanom Ghebreyesus on 28 July 2020



Photo 5. Press conference by Controller David Manning and Deputy Controller Dr Paison Dakulala on the new National Pandemic Measures on 28 July 2020



Photos 6-7. Daily meetings of the Pandemic Response Coordination Group at the National Control Centre in Morauta Haus



Photos 8-9. Daily meetings of the Health Operations Team at the National Control Centre in Morauta Haus



Photo 10. NCD PHA Team conducting healthcare worker risk assessment at Gerehu Hospital



**POMGEN COVID-19 APPEAL**

PORT MORESBY GENERAL HOSPITAL IS NOT CLOSED. WE HAVE BE ORGANISED OUR EMERGENCY DEPARTMENT AND OUR ESSENTIAL SERVICES. WE WILL CONTINUE TO PROVIDE SERVICES TO THE COMMUNITY WHILE AT THE SAME TIME WORKING TO CONTAIN THE SPREAD OF COVID-19 AND MANAGE PATIENTS.

WE ARE CALLING ON BUSINESS HOUSES AND THE GENERAL PUBLIC TO DONATE MUCH NEEDED SUPPLIES.

- FACE MASKS • GLOVES • PROTECTIVE FACE SHIELDS
- HAND SANITIZER • BED SHEETS • PILLOW CASES • BLANKETS
- MATTRESSES • LAUNDRY DETERGENT
- INDUSTRIAL WASHING MACHINES • DRYERS
- FRUITS & VEGETABLES • DRY GOODS • FREEZER GOODS
- FOOD CONTAINERS(TAKE AWAY PACKS) • BOTTLED WATERS AND WATER DISPENSERS • TOILET PAPERS • PAPER TOWELS
- BUCKETS • MOPS • FOOD TROLLEY • DISINFECTANT
- MOTOR VEHICLES FOR STAFF TRANSPORTATION

PLEASE CONTACT ROBERT TAU  
 MOBILE: 76333074 | EMAIL: bobtau.health@pomgen.gov.pg

Photo 11. PMGH announcement regarding continuity of hospital services and appeal for donations

Photos 12-14. Visits at Taurama Aquatic Centre by NDOH and partners as part of planning to convert the facility for isolation of mild and moderate COVID-19 cases



Photos 15-16. WHO support in quality improvement for pre-triaging, infection prevention and control and Emergency Department at Port Moresby General Hospital



Photo 17. GoData Training at Koki Clinic on 31 July 2020



Photo 18. NDoH conducts COVID-19 training in Aku Lodge in Hiri District, Central Province on 28 July 2020



Photos 19-20. FHI360 and WHO conducted risk communication training for all three districts of NCD with support from USAID



Photo 21. NCD PHA chaired a Risk Communication Team meeting with partners at World Vision Conference Room



Photo 22. Supervised handwashing at Gerehu Primary School in Port Moresby



Photo 23. NDOH Executive Manager Public Health Dr Daoni Esorom on Talk Back Show at NBC Radio on 26 July 2020



Photo 24. Consultative meeting with Council of Churches on the safe management of the deceased from COVID-19 attended by Bishop Denny Buka (Chair of the PNG Council of Churches), Rev Roger Joseph (PNG Council of Churches Secretary General) and Mr Lahui Lovai (PNG Council of Churches Media Liaison) on 31 July 2020



Photo 25. Pre-triaging for influenza-like illnesses in Boana Health Center in Morobe Province



Photo 26. Arrival of the containerized health clinic to Butuwin Health Centre in East New Britain on 31 July 2020

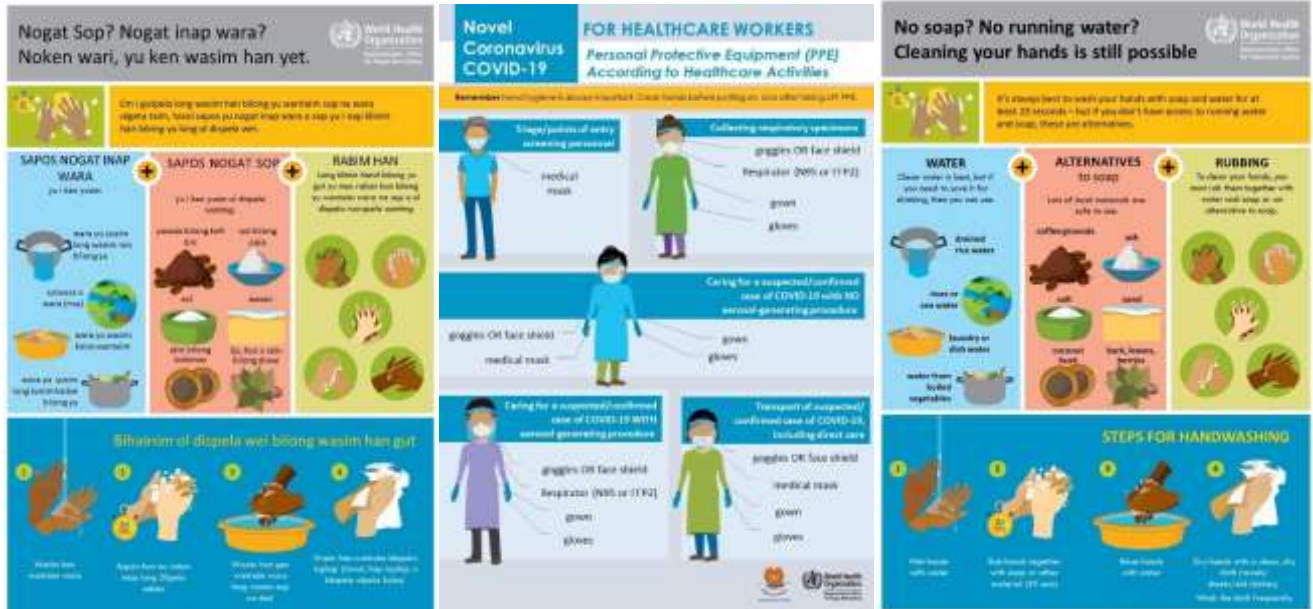


Photo 27. Mandatory wearing of mask in Angau Memorial Provincial Hospital in Lae, Morobe



Photos 28 -29. Progress in the conversion of the Sir Ignatius Kilage Stadium to a COVID-19 Hospital

## ANNEX F – Risk Communication Materials



For more information about this Situation Report, contact:

**Dr Daoni Esorom**

A/Executive Manager, Public Health, National Department of Health  
 Email: daoniesorom@gmail.com; Mobile: +675-72313983

**Mr Eric Salenga**

Information and Planning Team, World Health Organization  
 Email: salengar@who.int