

# Philippines

## Coronavirus Disease 2019 (COVID-19)

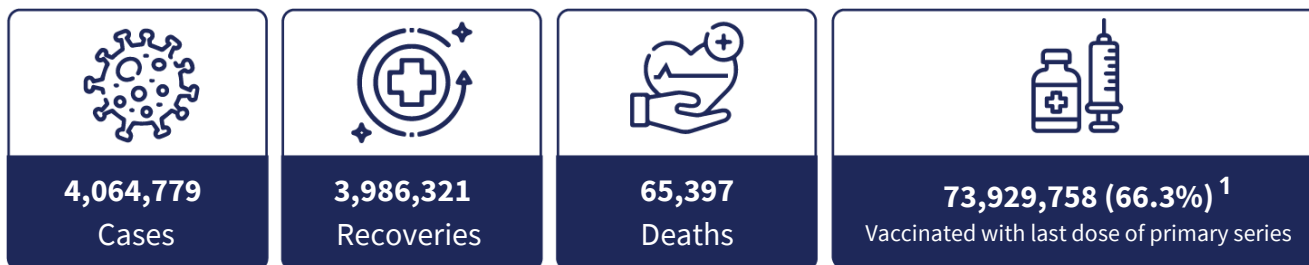
### Situation Report #118

2 Jan 2023

Data reported by the Department of Health on 1 Jan 2023



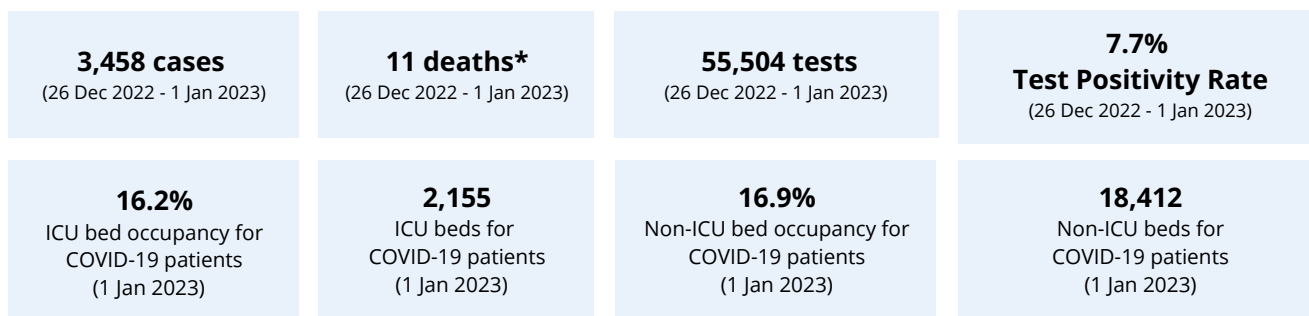
Photo credit: DOH Philippines



Please see the Philippines Department of Health (DOH) [Daily Case Bulletins](#) and [COVID-19 Tracker](#) for further information.

## Summary of the epidemiological situation in Philippines<sup>2</sup>

### Key numbers



\*Obtained from FASSSTER COVID-19 death tally as of 1 Jan 2023

### COVID-19 cases

The trend of reported COVID-19 cases in the Philippines is decreasing. On 26 Dec 2022 - 1 Jan 2023, 3,458 cases (3.1 cases per 100,000 population<sup>3</sup>) were reported – 39.0% lower than cases reported on the previous week [19 - 25 Dec: 5,690 cases (5.1 cases per 100,000 population<sup>3</sup>)]. From 12 to 18 Dec 2022, there were 7,572 cases; and on 28 Nov - 4 Dec, there were 7,731 cases. From 26 Dec 2022 to 1 Jan 2023, the following regions recorded the highest case counts: National Capital Region (1,364 cases), Region IV-A: CALABARZON (669 cases), and Region III: Central Luzon (305 cases).

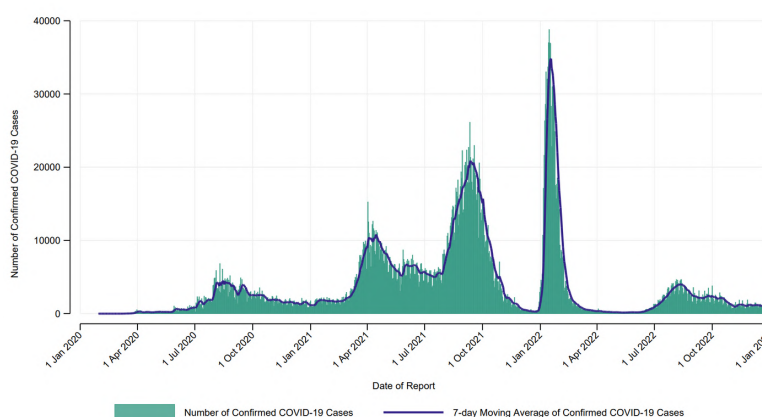


Figure 1. Daily reported COVID-19 cases in the Philippines (30 Jan 2020 - 1 Jan 2023)

<sup>1</sup>Percent of total population (n = 111,572,254)

<sup>2</sup>Weekly case counts were obtained from FASSSTER COVID-19 PROJECT

<sup>3</sup>Total population (n=111,572,254)

## Healthcare utilization

Over the last four weeks (5 Dec 2022 – 1 Jan 2023), the daily number (7-day average) of COVID-19 occupied ICU beds and the number of utilized COVID-19 dedicated mechanical ventilators (7-day average) were in a decreasing trend (Figure 2).

The number of ICU beds occupied in the last four weeks are as follows: 26 Dec 2022 - 1 Jan 2023 (429 beds); 19 - 25 Dec 2022 (489 beds); 12 - 18 Dec (524 beds); and 5 - 11 Dec (522 beds). As of 1 Jan 2023, the ICU utilization is 16.2%.

The number of COVID-19 dedicated mechanical ventilators utilized in the past four weeks are as follows: 26 Dec 2022 - 1 Jan 2023 (243 ventilators); 19 - 25 Dec 2022 (272 ventilators); 12 - 18 Dec (279 ventilators); and 5 - 11 Dec (264 ventilators). As of 1 Jan 2023, there were 203 ventilators utilized.

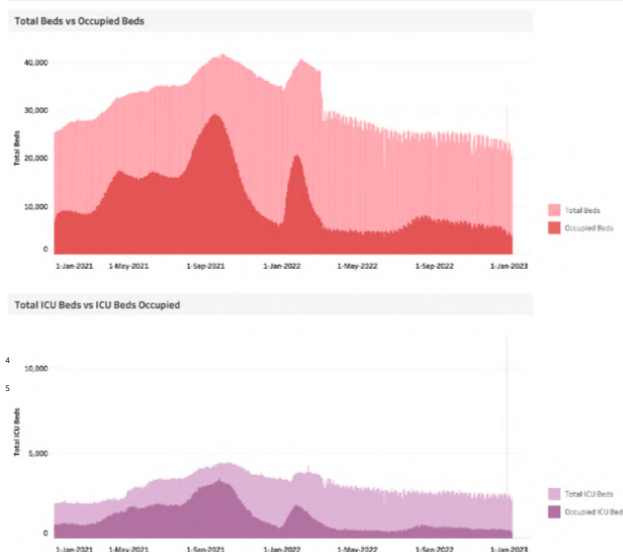


Figure 2. Total bed and ICU bed distribution over time stratified by occupancy (as of 1 Jan 2023)

## COVID-19 deaths

As of 1 Jan 2023, 65,435 COVID-19 related deaths have been reported in Philippines since the beginning of the COVID-19 pandemic (Figure 3).

From 26 Dec 2022 to 1 Jan 2023, there were 11 deaths reported.

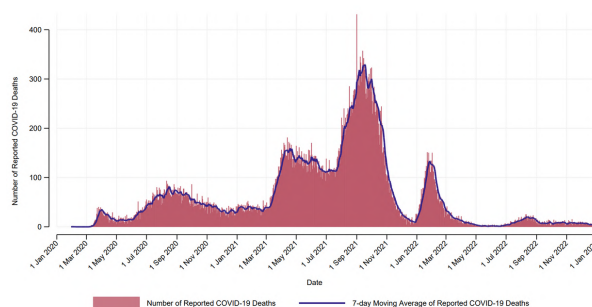


Figure 3. Daily number of COVID-19 deaths in the Philippines by date of death since 2020 (as of 1 Jan 2023)

## Laboratory: testing rates, positivity rates and genomic surveillance

On 26 Dec 2022 to 1 Jan 2023, 55,504 tests were conducted; 19 - 25 Dec: 66,595 tests; and on 12 - 18 Dec: 83,462 tests.

The test positivity rate from 26 Dec 2022 to 1 Jan 2023 was 7.7%, this is the first week that the test positivity rate was below 10.0% since 4 - 10 July 2022 and is 24.0% lower than the test positivity rate on 19 - 25 Dec (10.1%).

From the 351 samples sequenced by the UP Philippine Genome Center and RITM between 19 - 22 December 2022: 145 (41.3%) were classified as Omicron BA.2.3.20, 76 (21.7%) was BA.5, 72 (20.5%) was XBB, 40 (11.4%) were other Omicron subvariants, eight (2.3%) was XBC, and one (0.3%) was BA.4.

Of the 145 BA.2.3.20 cases, one case was a Returning Overseas Filipino (ROF) while the 144 were local cases from 14 regions (NCR, CAR, Regions I, II, III, IV-A, IV-B, V, VI, IX, XI, XII, and XIII).

The 76 BA.5 cases were from 11 regions (NCR, CAR, Regions I, III, IV-A, IV-B, V, VI, XII, XIII, and BARMM). Of the 72 XBB cases, two were ROFs while the 70 were local cases from eight regions (NCR, Regions IV-A, VI, VII, IX, XI, XII, and BARMM).

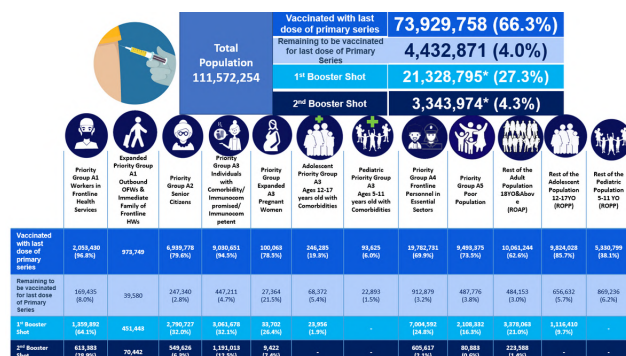
The eight XBC cases were from Region XI while the BA.4 case came from Region IV-A.<sup>4</sup>

<sup>4</sup> LATEST COVID-19 BIOSURVEILLANCE REPORT | Department of Health website (doh.gov.ph)

## Vaccination

As of 2 Jan 2023, 66.3% of the total population were vaccinated with last dose of primary series. From 26 Dec 2022 to 1 Jan 2023, 56,104 jabs were administered. Among healthcare workers (A1 priority group), the coverage is 96.8%, with 64.1% having received the first booster dose and 28.9% received the second booster dose.

The vaccination coverage (last dose of primary series) of the elderly population (A2 priority group) was 79.6%, and 32.0% have received their first booster (Figure 4). Twelve of the 17 regions have vaccinated (last dose of primary series) at least 90.0% of those with comorbidities, immunocompromised, and immunocompetent (A3 population) (Table 1).



\*eligible population for booster

Figure 4. Overview of COVID-19 vaccination status of Philippines' population, as of 2 Jan 2023

Cumulative Coverage Rate % (A3 w/ Comorbidities, Immunocompromised and Immunocompetent)							
REGION	Projected Priority Group	Vaccinated with last dose of primary series	%	Vaccinated with first dose of primary series	%	1st Booster Shot	%
NCR	2,301,372	2,260,055	98.2%	116,694	5.1%	935,415	40.6%
CAR	187,288	188,897	100.9%	5,199	2.8%	92,688	49.5%
1	467,742	465,227	99.5%	20,659	4.4%	198,415	42.4%
2	299,165	288,883	96.6%	15,794	5.3%	126,919	42.4%
3	1,043,162	1,030,997	98.8%	47,058	4.5%	387,495	37.1%
4A	1,145,277	1,027,770	89.7%	56,964	5.1%	335,504	29.3%
Mimaropa	224,855	196,567	87.4%	9,776	4.3%	57,998	25.8%
5	433,505	328,254	75.7%	33,428	7.7%	69,910	16.1%
6	638,715	619,392	97.0%	41,247	6.5%	110,378	17.3%
7	563,834	513,456	91.1%	25,675	4.6%	126,867	22.5%
8	336,264	245,805	73.1%	12,659	3.8%	51,530	15.3%
9	281,047	282,927	100.7%	8,270	2.9%	98,994	35.2%
10	356,812	352,781	98.9%	12,486	3.5%	150,672	42.3%
11	405,020	405,064	100.0%	7,491	1.8%	88,326	21.8%
12	364,276	360,522	99.0%	16,139	4.4%	101,087	27.7%
CARAGA	205,086	213,278	104.0%	(3,276)	-1.6%	66,519	32.4%
BARMM	298,914	250,776	83.9%	19,348	6.5%	62,761	21.0%
PHIL	9,552,337	9,030,651	94.9%	447,211	4.7%	3,061,678	32.1%

Table 1. Overview of vaccination of A3 population per region in the Philippines (2 Jan 2023)

For the booster doses, 27.3% of the eligible population received the first booster while 4.3% received the second booster dose.

## Strategic approach to COVID-19 Prevention, Detection, and Control

### Risk Communication and Community Engagement (RCCE)

#### Risk Communications

WHO Philippines re-published across all social media platforms our localized campaign on COVID-19 vaccines and boosters featuring photos of vaccinated Filipinos. This is in time for the anticipated increase in social gatherings during the holiday season.





#VACCINESWORK

“  
Huwag matakot lumapit sa inyong mga health workers, lalo na kung may katanungan tungkol sa bakuna at booster laban sa COVID-19. Nandito kami para sa inyo!

COUNSELLING

World Health Organization  
Philippines

#VACCINESWORK

“  
Mas ligtas kaming makakapaglaro kapag bakunado kami laban sa COVID-19.

World Health Organization  
Philippines

#VACCINESWORK

“  
Kampante at masayang magkakasama ang aming pamilya kahit nasa labas kasi bakunado na kami laban sa COVID-19!

World Health Organization  
Philippines

WHO Philippines published across all social media platforms RCCE messages for safe gatherings this holiday season.

Keep your family and friends safe during the holiday season. Stay home if you feel unwell or have symptoms. Get tested if you have been exposed to someone sick with COVID-19.

When shopping this holiday season, plan ahead to avoid crowds to protect yourself and others from COVID-19.

14 December 2022

#COVID19 #CelebrateSafely #LiveItSafely

World Health Organization  
Western Pacific Region

Protective measures you can take to celebrate safely

- ✓ Get all the recommended doses of a COVID-19 vaccine, including booster doses.
- ✓ Consider getting tested, especially if you are meeting someone at high risk.
- ✓ Stay home if feeling unwell.
- ✓ Hold the event outdoors.
- ✓ Wear a mask and keep a safe distance in crowded places.
- ✓ Ventilate indoor spaces.

Stay safe from COVID-19 while travelling by taking the following precautions:

- Follow local guidelines on travel requirements and protective measures.
- Get all the recommended doses of a COVID-19 vaccine, including booster doses.
- Practise protective measures such as wearing a mask, cleaning hands and covering coughs and sneezes.
- Don't travel if you are feeling unwell.

14 December 2022

#COVID19 #CelebrateSafely #LiveItSafely

World Health Organization  
Western Pacific Region

This holiday season remember to spare time to take care of yourself. Do your favourite activities and stay physically active.

Quick tips to celebrate safely

- ✓ Plan your gathering to protect people most at risk of severe illness from COVID-19.
- ✓ Take appropriate protective measures and ask everyone to practice them.
- ✓ Encourage everyone to get fully vaccinated.

14 December 2022

#COVID19 #CelebrateSafely #LiveItSafely

World Health Organization  
Western Pacific Region

World Health Organization  
Philippines

# Have a safe and healthy 2023!