


Philippines

Coronavirus Disease 2019 (COVID-19)

Situation Report #111

26 September 2022
Data reported by the Department of Health on 25 September 2022



			
3,938,203 Cases	3,840,014 Recoveries	62,790 Deaths	73,010,785 (65.4%)¹ Vaccinated with last dose of primary series

Please see the Philippines Department of Health (DOH) [Daily Case Bulletins](#) and [COVID-19 Tracker](#) for further information.

Summary of the epidemiological situation in Philippines²

Key numbers

17,891 cases (19 -25 September 2022)	8 deaths* (19 -25 September 2022)	129,969 tests (19 -25 September 2022)	15.5% Test Positivity Rate (19 -25 September 2022)
23.0% ICU bed occupancy for COVID-19 patients	2,517 ICU beds for COVID-19 patients	27.8% Non-ICU bed occupancy for COVID-19 patients	21,078 Non-ICU beds for COVID-19 patients

*Obtained from FASSSTER COVID-19 death tally as of 26 September 2022

COVID-19 cases

Following five weeks (week 33 - 37) of continued decreasing trend of reported COVID-19 cases, Philippines has observed the first week of an increase in week 38 (19 - 25 September 2022). There were 17,891 new cases (16.0 cases per 100,000 population³) reported in week 38 that is 22.0% higher than week 37 [(12 -18 September 2022: 14,699 new cases (13.2 cases per 100,000 population³)). In week 38, the following regions recorded the highest case counts: National Capital Region (8,413 cases), Region IV-A: CALABARZON (3,327 cases), and Region III: Central Luzon (1,780 cases).

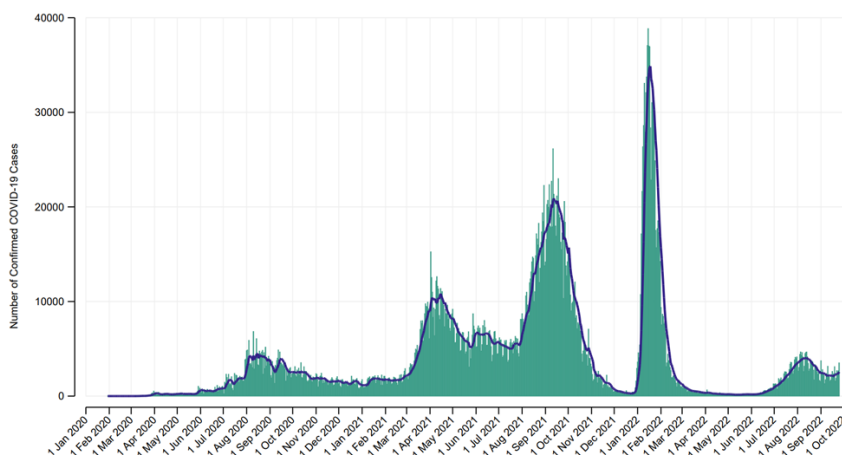


Figure 1. Daily reported COVID-19 cases in the Philippines (30 January 2020 – 25 September 2022)

¹Percent of total population (n = 111,572,254)

²Weekly case counts were obtained from FASSSTER COVID-19 PROJECT

³Total population (n=111,572,254)

Healthcare utilization

The daily number (7-day average) of COVID-19 occupied ICU beds had been barely changing in the past four weeks (week 38 - 650 beds, week 37 - 647 beds, week 36 - 639 beds, week 35 - 627 beds). As of 25 September 2022, the COVID-19 ICU bed utilization is 24.0%.

In relation, there is also no meaningful difference in the utilization of COVID-19 dedicated mechanical ventilators (7-day average) in the past four weeks (week 38 - 324 ventilators, week 37 - 317 ventilators, week 36 - 318 ventilators, week 35 - 332 ventilators).

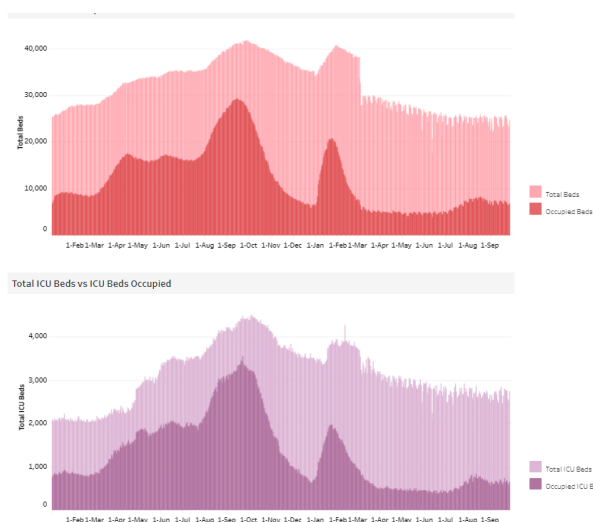


Figure 2. Total bed and ICU bed distribution over time stratified by occupancy (as of 25 September 2022)

COVID-19 deaths

Since the beginning of the COVID-19 pandemic, 62,790 COVID-19 related deaths have been reported in Philippines as of 25 September 2022 (Figure 3). Between 1 July and 25 September, there were 875 deaths reported; of these 270 were in July, 515 in August, and 90 in 1 - 25 September.

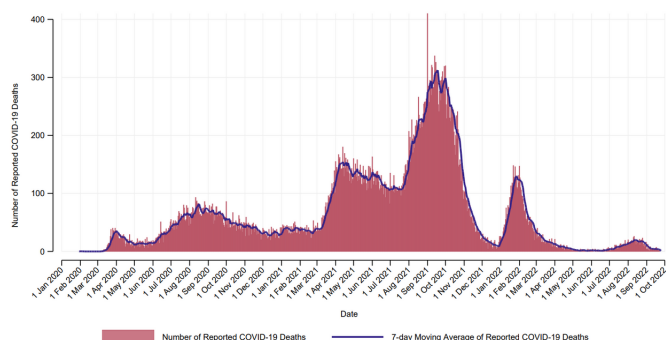


Figure 3. Daily number of COVID-19 deaths in the Philippines by date of death since 2020 (as of 25 September 2022)

Laboratory: testing rates, positivity rates and genomic surveillance

There is no meaningful change in the recent testing rate (number of tests per 1,000 population) in the Philippines. There were 1.20 tests per 1,000 population for week 38 (129,969 tests) while for week 37 there were 1.23 tests per 1,000 population (137,347 tests).

Meanwhile, the recent positivity rate (number of individuals that tested positive/number of individuals tested) is 14.8% higher than that of the previous week (week 38 - 15.5%, week 37 - 13.5%); this has been the third week of an increase in positivity rate since week 36.

From 12 - 25 September 2022, Department of Health Officer-in-Charge Dr Maria Rosario Vergeire released three Whole Genome Sequencing (WGS) results (Table 1).

On 20 September 2022, 639 were confirmed to be Omicron Variant of Concern (VOC) – 677 BA.5 and 16 BA.4. Of the 677 BA.5 cases, 11 are Returning Overseas Filipinos (ROFs) and the 666 of the BA.5 cases were detected across the 17 regions; the 16 BA.4 cases were detected from four regions⁴.

On 16 September 2022, the DOH reported 167 Omicron VOC and four Delta variant from WGS results as of 13 September 2022. The Omicron sublineages detected were 163 BA.5, two BA.4, and two "Other sublineages." The 151 BA.5, two BA.4, two other sublineage and four Delta variant cases were all from Region XI⁵.

On 13 September 2022, 901 were confirmed to be Omicron Variant of Concern (VOC) and two were Delta variant from the Whole Genome Sequencing (WGS) run from 9 -12 September 2022. The Omicron sublineages detected were 839 (93.1%) BA.5, 11 (1.2%) BA.4, one BA.2.12.1, one BA.2.75, and 49 (5.4%) were tagged as "other sublineages." Eight of the 839 BA.5 cases were Returning Overseas Filipinos (ROFs) while the 831 cases were detected from all of the 17 regions, BA.4 cases were from four regions, BA.2.75 came from NCR, and the BA.2.12.1 is a ROF (Table 1)⁶.

⁴ DOH logs 693 more cases of 2 Omicron subvariants | Philippine News Agency (pna.gov.ph)

⁵ PH detects 165 add'l cases of Omicron, 4 cases of Delta | Philippine News Agency (pna.gov.ph)

⁶ DOH: 901 new cases of omicron subvariants, 2 Delta infections detected | ABS-CBN News

Region	13 September 2022				16 September 2022				20 September 2022	
	BA.5	BA.4	BA.2.75	Delta	BA.5	BA.4	Other sublineage	Delta	BA.5	BA.4
NCR	182	1	1	1	1	0	0	0	126	2
I (Ilocos Region)	39	0	0	0	0	0	0	0	50	0
II (Cagayan Valley)	13	0	0	0	0	0	0	0	75	0
III (Central Luzon)	47	0	0	0	0	0	0	0	37	0
IV-A (CALABARZON)	106	1	0	1	0	0	0	0	56	0
IV-B (MIMAROPA)	52	0	0	0	0	0	0	0	17	0
V (Bicol Region)	28	2	0	0	0	0	0	0	15	1
VI (Western Visayas)	135	0	0	0	1	0	0	0	104	0
VII (Central Visayas)	25	0	0	0	1	0	0	0	18	1
VIII (Eastern Visayas)	6	0	0	0	0	0	0	0	1	0
IX (Zamboanga Peninsula)	3	0	0	0	0	0	0	0	25	0
X (Northern Mindanao)	2	0	0	0	0	0	0	0	2	0
XI (Davao Region)	2	0	0	0	151	2	2	4	2	0
XII (SOCCSKSARGEN)	60	7	0	0	6	0	0	0	54	12
XIII (CARAGA)	9	0	0	0	2	0	0	0	16	0
Cordillera Administrative Region	116	0	0	0		0	0	0	73	0
BARMM	6	0	0	0	1	0	0	0	6	0
TOTAL	831	11	1	2	163	2	2	4	666	16

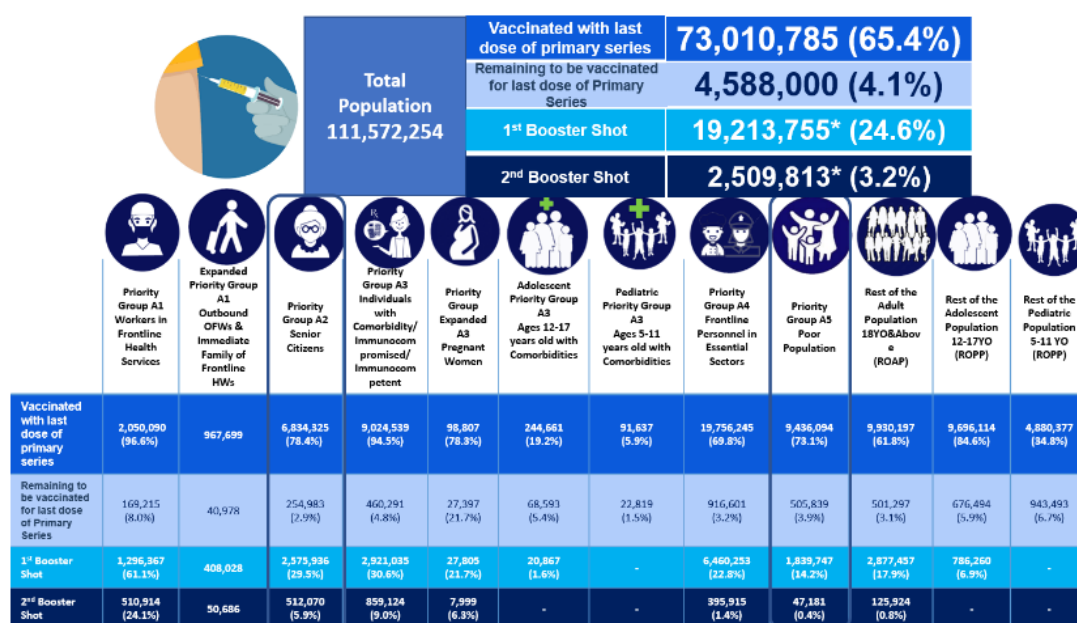
Table 1. Number of BA.5, BA.4, BA.2.75, Other sublineage, and Delta variant cases detected per region in the Philippines, 13 Sept, 16 Sept, and 20 Sept 2022

Vaccination

As of 25 September 2022, 65.4% of the total population were vaccinated with the last dose of primary series. Among healthcare workers (A1 priority group), the coverage is 96.6%, with 61.1% having received the first booster dose and 24.1% received the second booster dose.

The Philippine government continues to prioritize COVID-19 vaccination (primary series and booster shots) of the vulnerable sectors of the population - elderly population (A2 priority group), persons with comorbidities (A3) and poor population (A5); their respective vaccination coverage (vaccinated with last dose of primary series) is 78.4%, 94.5%, and 73.1% (Figure 4).

For the first booster shot, 24.6% of the eligible population received the jab. The vaccination coverage of first booster dose for A2, A3, and A5 priority groups are 29.5%, 30.6%, and 14.2%, respectively.



*eligible population for booster

Figure 4. Overview of COVID-19 vaccination status of Philippines' population as of 25 September 2022

On 26 September 2022, the Department of Health postponed the launching of "PinasLakas Bakunahang Bayan" in Luzon due to Typhoon Karding, whilst other regions proceeded with their launch as scheduled ⁷.

The vaccination coverage (last dose of primary series) of A2 population is 90% and above in three regions – with 93.1% in Region II, while the coverage is less than 60% in BARMM (Table 2).

Meanwhile, the vaccination coverage of the A5 group is 70% and above in six of the 17 regions (Table 3) while 11 of the 17 regions have a vaccination coverage of 95% and above in A3 population (Table 4).

REGION	Projected Pop (Priority Group A2)	Vaccinated with last dose of primary series	%	Vaccinated with first dose of primary series	%	1st Booster Shot	%	2nd Booster Shot	%
NCR	1,154,257	1,047,274	90.7%	20,174	1.7%	624,139	54.1%	271,818	23.5%
CAR	135,093	122,777	90.9%	6,105	4.5%	55,794	41.3%	12,430	9.2%
1	501,412	447,864	89.3%	16,233	3.2%	193,347	38.6%	17,858	3.6%
2	323,017	300,792	93.1%	10,485	3.2%	110,495	34.2%	9,251	2.9%
3	1,064,045	841,713	79.1%	31,006	2.9%	386,535	36.3%	66,054	6.2%
4A	1,273,740	1,049,795	82.4%	48,609	3.8%	420,004	33.0%	78,577	6.2%
Mimaropa	235,283	165,861	70.5%	10,834	4.6%	49,862	21.2%	3,225	1.4%
5	466,893	360,404	77.2%	14,923	3.2%	86,016	18.4%	5,816	1.2%
6	735,157	567,912	77.3%	(5,496)	-0.7%	141,735	19.3%	7,769	1.1%
7	677,107	407,292	60.2%	11,980	1.8%	99,749	14.7%	10,990	1.6%
8	389,645	273,462	70.2%	14,211	3.6%	64,095	16.4%	2,951	0.8%
9	273,362	204,150	74.7%	9,401	3.4%	57,904	21.2%	3,221	1.2%
10	384,311	284,705	74.1%	16,035	4.2%	100,575	26.2%	7,136	1.9%
11	407,116	265,822	65.3%	32,114	7.9%	74,764	18.4%	9,810	2.4%
12	306,824	216,546	70.6%	12,577	4.1%	51,271	16.7%	2,727	0.9%
CARAGA	207,153	179,046	86.4%	(5,041)	-2.4%	41,082	19.8%	2,244	1.1%
BARMM	186,876	98,910	52.9%	10,833	5.8%	18,569	9.9%	193	0.1%
PHIL	8,721,291	6,834,325	78.4%	254,983	2.9%	2,575,936	29.5%	512,070	5.9%

Table 2. Overview of vaccination of A2 population per region in the Philippines (25 September 2022)

REGION	Projected Priority Group A5	Vaccinated with last dose of primary series	%	Vaccinated with first dose of primary series	%	1st Booster Shot	%	2nd Booster Shot	%
NCR	663,588	2,172,701	327.4%	62,578	9.4%	652,646	98.4%	3,610	0.5%
CAR	179,565	150,706	83.9%	7,076	3.9%	30,417	16.9%	498	0.3%
1	618,150	405,991	65.7%	34,876	5.6%	105,148	17.0%	3,442	0.6%
2	315,918	233,213	73.8%	19,588	6.2%	50,197	15.9%	1,770	0.6%
3	882,423	637,973	72.3%	50,765	5.8%	150,340	17.0%	5,362	0.6%
4A	955,143	1,216,712	127.4%	47,551	5.0%	254,007	26.6%	12,109	1.3%
Mimaropa	583,026	212,019	36.4%	17,616	3.0%	27,323	4.7%	796	0.1%
5	1,111,587	455,636	41.0%	49,413	4.4%	47,012	4.2%	1,824	0.2%
6	967,299	977,257	101.0%	(101,792)	-10.5%	120,925	12.5%	4,848	0.5%
7	854,691	503,650	58.9%	26,685	3.1%	60,849	7.1%	2,026	0.2%
8	839,772	339,974	40.5%	41,783	5.0%	45,022	5.4%	2,673	0.3%
9	896,151	453,634	50.6%	31,319	3.5%	78,256	8.7%	1,989	0.2%
10	798,837	305,501	38.2%	27,925	3.5%	58,651	7.3%	938	0.1%
11	771,534	436,674	56.6%	37,558	4.9%	44,233	5.7%	2,515	0.3%
12	743,511	250,226	33.7%	29,515	4.0%	21,062	2.8%	322	0.0%
CARAGA	566,586	221,177	39.0%	24,236	4.3%	26,945	4.8%	906	0.2%
BARMM	1,163,412	463,050	39.8%	99,147	8.5%	66,714	5.7%	1,553	0.1%
PHIL	12,911,193	9,436,094	73.1%	505,839	3.9%	1,839,747	14.2%	47,181	0.4%

Table 3. Overview of vaccination of A5 population per region in the Philippines (25 September 2022)

REGION	Projected Priority Group	Vaccinated with last dose of primary series	%	Vaccinated with first dose of primary series	%	1st Booster Shot	%	2nd Booster Shot	%
NCR	2,301,372	2,265,734	98.5%	125,323	5.4%	919,963	40.0%	334,900	14.6%
CAR	187,289	188,720	100.8%	5,217	2.8%	87,966	47.0%	10,939	5.8%
1	467,742	464,033	99.2%	21,087	4.5%	181,376	38.8%	64,553	13.8%
2	299,165	288,541	96.4%	15,885	5.3%	118,055	39.5%	31,882	10.7%
3	1,043,162	1,029,904	98.7%	47,418	4.5%	373,610	35.8%	135,784	13.0%
4A	1,145,277	1,027,445	89.7%	58,948	5.1%	326,143	28.5%	119,999	10.5%
Mimaropa	224,855	196,140	87.2%	9,875	4.4%	55,023	24.5%	13,619	6.1%
5	433,505	327,410	75.5%	33,703	7.8%	64,835	15.0%	10,991	2.5%
6	638,715	618,985	96.9%	41,216	6.5%	105,882	16.6%	17,153	2.7%
7	563,834	513,983	91.2%	24,829	4.4%	122,059	21.6%	19,667	3.5%
8	336,264	245,594	73.0%	12,698	3.8%	48,308	14.4%	6,134	1.8%
9	281,047	282,352	100.5%	8,438	3.0%	92,487	32.9%	17,962	6.4%
10	356,812	352,119	98.7%	12,823	3.6%	137,878	38.6%	32,858	9.2%
11	405,020	404,698	99.9%	7,540	1.9%	84,400	20.8%	14,941	3.7%
12	364,278	359,983	98.8%	16,383	4.5%	94,264	25.9%	12,915	3.5%
CARAGA	205,086	213,491	104.1%	(3,196)	-1.6%	59,810	29.2%	11,506	5.6%
BARMM	298,914	245,407	82.1%	22,104	7.4%	48,976	16.4%	3,321	1.1%
PHIL	9,552,337	9,024,539	94.5%	460,291	4.8%	2,921,035	30.6%	859,124	9.0%

Table 4. Overview of vaccination of A3 population per region in the Philippines (25 September 2022)

^[7] PHA - DOH postpones launching of 'Bakunahang Bayan' in NCR, rest of Luzon

Strategic approach to COVID-19 Prevention, Detection, and Control

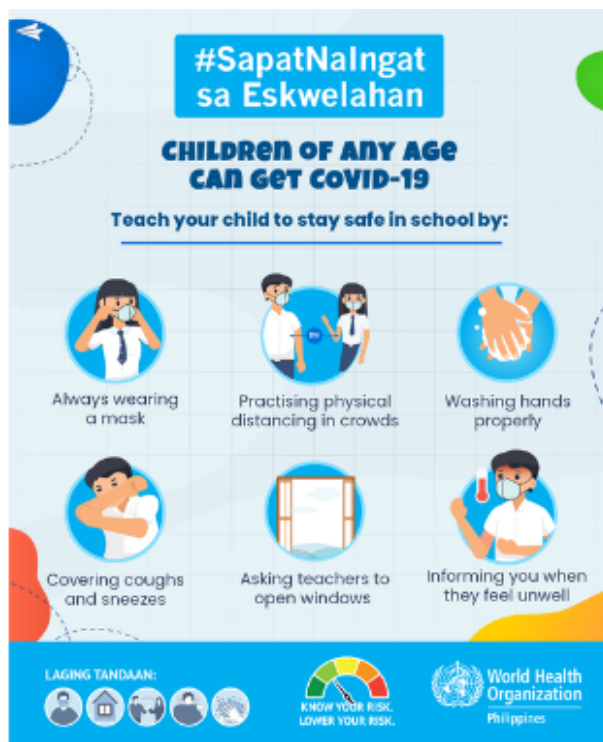
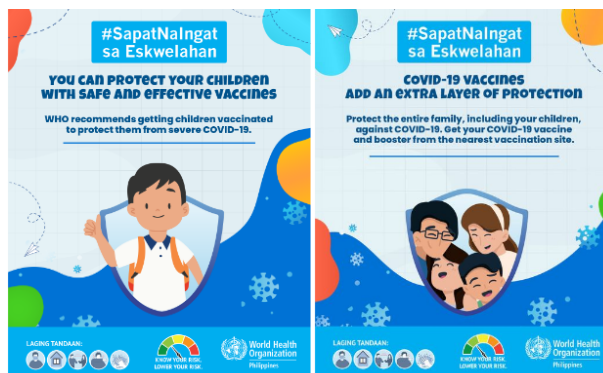
Risk Communication and Community Engagement (RCCE)

Risk Communications

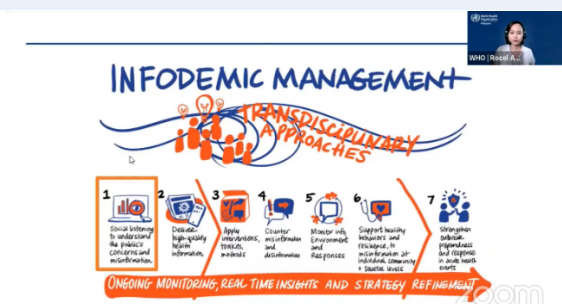
WHO Philippines published social media content on the personal and social benefits of COVID-19 vaccines and booster doses.



WHO Philippines published social media content on the benefits of COVID-19 vaccination for children under the #SapatNalngat sa Eskwelahan campaign.



On 17 September 2022, Ms Rocel Ann Junio-Balbutin, Communications Officer and RCCE Pillar Lead at WHO Philippines, served a resource speaker for the Infodemic Management Course organized by the Department of Science and Technology's Philippine Council for Health Research and Development (PCHRD). She shared WHO's process and taxonomy of infodemic signal detection for COVID-19.



Partner Coordination

Updates from USAID

USAID's EpiC conducts mental health seminar for healthcare workers of Cebu City Medical Center

USAID's EpiC conducted a mental health seminar for about 20 healthcare workers of Cebu City Medical Center (CCMC), including doctors, nurses, midwives, allied health professionals, and administrative support. CCMC appreciated the knowledge and skills they gained from the activity as they actively participated in the discussion. CCMC's Chief of Hospital, Dr Anthony Oliver Reposar II, shared that CCMC is undergoing facility upgrades to serve and cater to more Cebuanos. He considers implementing mental health policies and activities to build the resilience of their health workforce.



Handover of 900 boxes of rapid antigen test kits equivalent to 18,000 tests to Bulacan Provincial Health Office.



Hand-over of PCR and Extraction Machine at City of Dasmarias Molecular Laboratory

USAID's Infectious Disease Detection and Surveillance (IDDS) Project continues to help transport COVID-19 specimens.

The IDDS project transported a total of 3,541 COVID-19 specimens for the month of August, in support of the specimen referral and transport in various health facilities in 4 regions, namely, Regions II, III, IV-A, and IV-B.

With a dedicated transport team and field coordinators, IDDS transported an average of 169 specimens per day with a turnaround time of 2 hour and 16 minutes.