

Coronavirus disease (COVID-19)

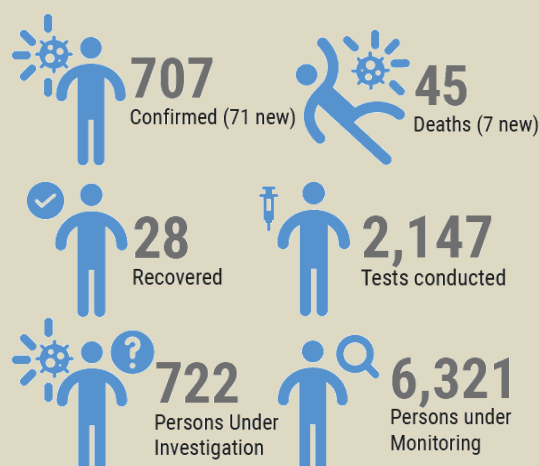
Situation Report 10 Philippines 26 March 2020

Data reported by the Department of Health on 26 March 2020

Highlights

- **71 new cases of COVID-19 confirmed on 26 March, compared to 84 cases on 25 March. 7 additional deaths reported on 26 March, and 3 on 25 March.**
- Out of 707 confirmed cases, 39.9% are still under investigation. 61% are male, with people between 50 and 59 years of age among the most affected. 48% of cases are reported from the National Capital Region (NCR)
- **The Philippine government declared a national emergency with the signing of Senate Bill # 1418 'Bayanihan To Heal As One Act' to speed up COVID-19 response as laid out in the National Action Plan, led by the Departments of National Defence (DND) and Interior and Local Government (DILG), including procurement and delivery of urgently needed supplies and equipment to health facilities.**
- 100,000 test kits donated by China currently being distributed among 4 sub national laboratories after positive assessments from Research Institute for Tropical Medicine (RITM). Department of Health (DOH) looking into increasing testing capacity at private hospital laboratories.
- DOH distributing available Personal Protection Equipment (PPE) to priority public hospitals. PPE shortage remains a major challenge, posing increased risk for health workers.
- Online training materials on Infection Prevention and Control for rational use of PPE among hospital workers being updated based on pilot conducted on 25 March for 65 participants from different agencies, including 3 hospitals in Bangsamoro Autonomous Region in Muslim Mindanao (BARMM)
- COVID-19 infection was confirmed in a WHO Staff member on 24 March, the first confirmed case among over 2,000 UN staff members currently working in the Philippines. The staff is following treatment protocols and no other staff were exposed.
- **Many partners supporting Local Government Units (LGUs) with setting up isolation units at barangay level: importance to ensure distinction between confirmed and suspected cases to reduce further risk of transmission. Community quarantine measures aimed at decreasing stress on health facilities through minimizing risk of infection, potentially resulting in lower morbidity and mortality. Key focus on at-risk groups including elderly and people with underlying health conditions such as diabetes and hypertension**

PHILIPPINES SITUATION IN NUMBERS



DOH COVID-19 HOTLINE

OPEN TO ALL CALLERS NATIONWIDE:
(02) 894-COVID
(02) 894-26843

FOR PLDT, SMART, SUN,
AND TNT SUBSCRIBERS:
1555

We're working to have the 1555 hotline accessible for all.

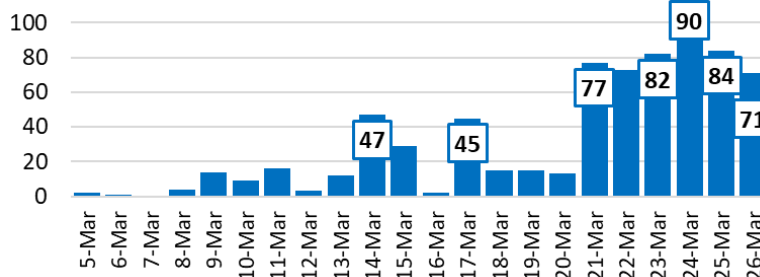
f OfficialDOHgov @DOHgovph doh.gov.ph (02) 894-COVID

<https://ncovtracker.doh.gov.ph/>
<http://www.covid19.gov.ph/>

Current Situation

On 26 March, 71 new cases of COVID-19 were confirmed in the Philippines, compared to 84 newly reported cases on 25 March. Seven additional deaths were reported on 26 March, compared to 3 on 25 March. There are currently 707 confirmed COVID-19 cases including 45 deaths in the country.

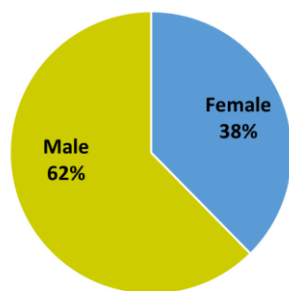
Daily reported confirmed COVID-19 cases in the Philippines
5-26 March 2020 (N=707)



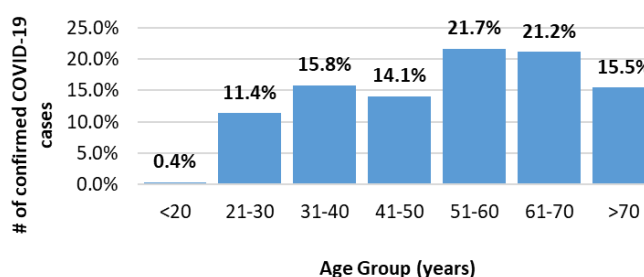
Out of total 45 deaths, 74% are male, ranging between 34 and 89 years of age with a median age of 66. 90% of deaths had either one or several known co-morbidities including diabetes, chronic kidney disease, hypertension, cardiac disease and bronchial asthma.

Among the 707 confirmed cases, 442 are male (62%) and 266 are female (38%). The most affected age groups are 51-60 (21.7%) followed by 61-70 years (21.2%)

Gender distribution of confirmed COVID-19 cases in the Philippines in %
18 January-26 March 2020 (N=707)



Age distribution of confirmed COVID-19 cases in the Philippines in #
18 January-26 March 2020 (N=707)



Country readiness and response operations

Country-level coordination

The Philippine government declared a national emergency with the signing of Senate Bill # 1418 BA-YANIHAN TO HEAL AS ONE ACT to speed up response actions as laid out in the National Action Plan, led by the Departments of National Defence (DND) and Interior and Local Government (DILG), including procurement and delivery of urgently needed supplies and equipment to health facilities.

While ongoing restrictions due to the community quarantine are forcing NGOs to cease operations, many report successful negotiations with Local Government Units for access to displaced populations affected by recent disasters.

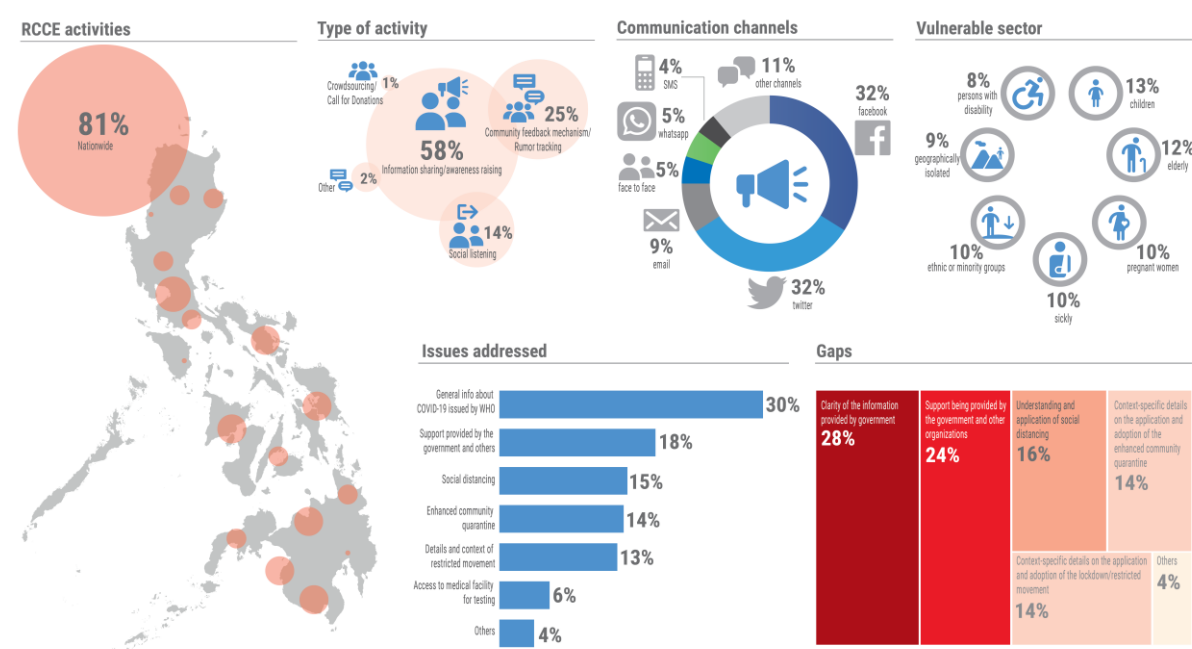
All relevant government guidelines, issuances, and documents available online at bit.ly/COVIDPH.

Risk communication and community engagement

Many NGOs like Save the Children and CARE are shifting to adaptive programming and focusing on risk communication, education of vulnerable population and mental health and psychosocial support. Unified messaging as approved by DOH are disseminated through social media, radio and printed materials using networks of community officials and volunteers.

NGOs to focus on reaching displaced communities, particularly in Mindanao, as many do not have access to internet.

The MHPSS Cluster is continuing its coordination with government and non-government partners through virtual meetings, discussing upcoming training and guidelines on MHPSS as well as the national MHPSS and Communications Plan.



Sources: Community of Practice on Community Engagement members. Prepared by OCHA

Surveillance

Many volunteers from the Philippine Red Cross and the University of the Philippines have signed up to support DOH in contact tracing and case investigation.

With 40% of confirmed cases still to be investigated, DOH is continuing its search for skilled volunteers to join their contact tracing teams.

National laboratory system

RITM successfully validated the PCR-based tests donated by the Chinese government. Most of the 100,000 available tests have been distributed among the below laboratories that are currently testing for COVID-19. DOH is looking into adding additional private hospital laboratories.

Current daily testing capacity per operational laboratory:

| Laboratory | Current Capacity (per day) | Areas served |
|---|----------------------------|--------------------|
| Research Institute for Tropical Medicine | 600 | Nationwide |
| Baguio General Hospital and Medical Center | 30 | CAR/Northern Luzon |
| San Lazaro Hospital | 30 | NCR/Nearby Regions |
| Vicente Sotto Medical Center (Cebu) | 90 | Visayas Regions |
| Southern Philippines Medical Center (Davao) | 15 | Mindanao Regions |
| National Institute for Health (UP-NIH) (Manila) | 44 | NCR/Nearby Regions |

CALLING ALL CONTACT TRACING VOLUNTEERS

We are looking for health professionals able, healthy, and willing volunteers to commit to at least 5 days of work with the Department of Health Epidemiology Bureau to do contact tracing in Metro Manila, with volunteer hours from 8:00 AM to 5:00 PM.

What will volunteering involve?

POSSIBLE TASKS

- Profiler (field work)
- Data Encoder (DOH Central Office)
- Call Center Staff (DOH Central Office)

HOW TO VOLUNTEER

1. Sign up and answer survey
2. Wait for DOH Epidemiology Bureau confirmation for fitness to participate
3. Attend orientation and training
4. Sign waiver and non-disclosure agreement
5. Show up for your shift

KNOW MORE AND SIGN UP AT:
bit.ly/COVID19PHContactTracing

OfficialDOHgov @DOHgovph doh.gov.ph (02) 894-COVID

Infection prevention and control

Online IPC training for public and private hospitals workers was piloted for selected hospitals in BARMM on 25 March. Online training modules to be adapted with latest DOH guidelines and feedback from pilot, after which a Training of Trainers will be held for 4 facilitators from DOH and USAID's Medicines, Technologies, and Pharmaceutical Services (MTaPs).

UNICEF adapting IPC guidelines into user-friendly information products, to be disseminated among community health workers and the broader population through Facebook live sessions, Zoom webinars, online learning platforms and other.

IOM provided 6 Community Hygiene and Disinfection Kits earthquake-affected displacement sites in Mindanao, with more kits on the way. IOM is also supporting with the construction of WASH and COVID-19 preparedness facilities in 3 North Cotabato displacement sites, with ongoing construction in 2 sites.

Save the Children will be distributed alcohol and soap in Paranaque and Malabon for fire survivors.

ICRC is supporting 13 prisons in NCR with an estimated 100,000 detainees. While no confirmed cases have been reported as yet, many staff and detainees are categorized as Persons Under Monitoring. ICRC also distributed 2000 hygiene kits for police lock ups.

Case management and continuity of essential services

DOH updating its health facility database with key information on staff, services, and capacity including number of isolation units, ventilators. This information will be made available through the WHO-led platform HerAMS (Health Resources Availability Monitoring System) <https://herams.org/>

UNAIDS and other UN agencies are conducting a rapid survey on the needs of People Living with HIV in the Context of Coronavirus.



DOH dispatching tents and PPE to the regions with the support from UNICEF and Lionair.

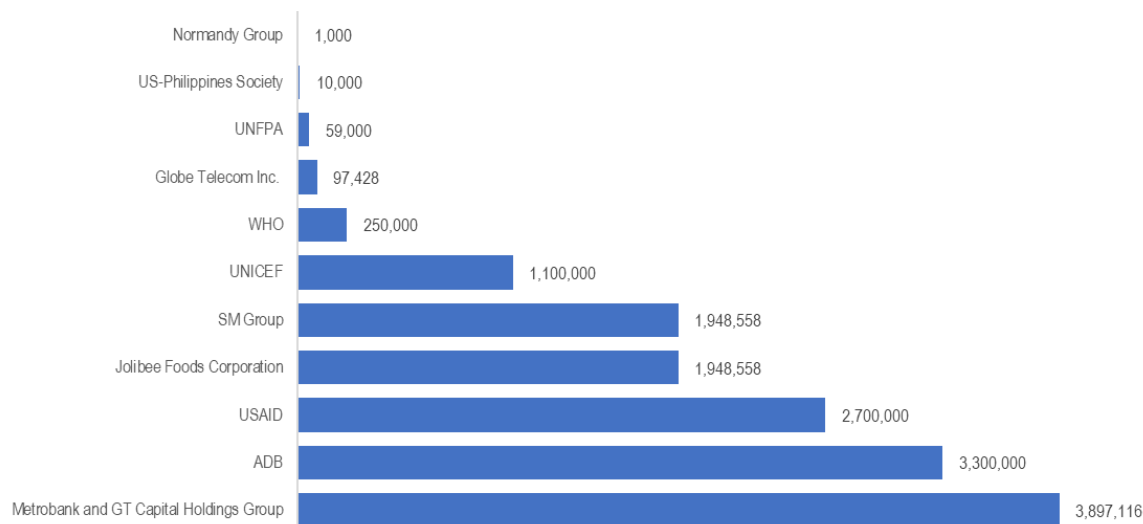


| THE STRATEGY TO BEAT COVID-19 | | 1 ENHANCED COMMUNITY QUARANTINE AND SOCIAL DISTANCING | | 2 CONTACT TRACING AND SURVEILLANCE | | 3 A TRIAGE SYSTEM AND INCREASED TESTING | | 4 IMPROVED CASE MANAGEMENT OF PATIENTS | |
|--|--|---|--|---|--|---|--|--|--|
| <p>The Philippine government's strategy for beating COVID-19 has four components:</p> <ol style="list-style-type: none"> 1) Enhanced community quarantine and social distancing 2) Contact tracing and surveillance 3) A triage system and increased testing 4) Improved case management of patients <p>Build through these steps to learn more about each component and what you can do to help.</p> <p>OfficialDOHgovph @DOHgovph @dohgovph (02) 884-COVID</p> | | <p>Enhanced Community Quarantine prevents the spread of the virus in a given community. It limits the movement of people so that there is a smaller chance for people to infect, or get infected by, others.</p> <p>It protects us, especially the most vulnerable.</p> <p>OfficialDOHgovph @DOHgovph @dohgovph (02) 884-COVID</p> | | <p>Contact Tracing is the process by which DOH identifies people who have been exposed to a COVID-19 patient and reaches out to them. Please remember that even those without symptoms may have COVID-19 and could be spreading the virus unknowingly.</p> <p>Surveillance is the process of finding potential COVID-19 cases among those suffering from severe acute respiratory illness. This is done to catch other possible COVID-19 cases outside the contact tracing activities.</p> <p>OfficialDOHgovph @DOHgovph @dohgovph (02) 884-COVID</p> | | <p>The DOH is currently improving its testing facilities and acquiring new kits so that more patients can be tested. In the meantime, individuals will be classified according to a process (called triage).</p> <p>Priority in testing is given to those who have weakened immune systems (people over 65 years old, with existing conditions, etc.) or severe symptoms. They need to be treated right away as they are the most vulnerable.</p> <p>OfficialDOHgovph @DOHgovph @dohgovph (02) 884-COVID</p> | | <p>Improving case management means that DOH is:</p> <ol style="list-style-type: none"> 1) Allocating additional health equipment and supplies (such as PPEs, respirators, medicines) to health facilities that manage COVID-19 cases 2) Capacitating health workers on how to take care of patients based on new evidence and developments from reputable health organizations <p>Improved case management increases a COVID-19 patient's chance of recovery.</p> <p>OfficialDOHgovph @DOHgovph @dohgovph (02) 884-COVID</p> | |
| <p>The strategy will only work with the strict implementation of each component.</p> <p>If we all do our part, we will achieve:</p> <ul style="list-style-type: none"> ➤ Fewer Filipinos infected with COVID-19 ➤ A higher recovery rate among those infected by the virus ➤ Better chances for our healthcare system to keep up with the number of cases <p>THE BOTTOM LINE: WE WILL SAVE LIVES.</p> <p>OfficialDOHgovph @DOHgovph @dohgovph (02) 884-COVID</p> | | <p>You can do your part by:</p> <ol style="list-style-type: none"> 1) Staying at home. 2) Maintaining a one-meter distance from people to lessen your risk of exposure, especially when you're in the market or drugstore. 3) Avoiding crowds. 4) Continuing to practice good hygiene by observing cough etiquette, frequently washing your hands, and not touching your mouth, ears, or nose. <p>OfficialDOHgovph @DOHgovph @dohgovph (02) 884-COVID</p> | | <p>What can you do:</p> <p>If DOH contacts you, please:</p> <ol style="list-style-type: none"> 1) Answer the questions honestly and as best as you can. 2) Keep in touch with DOH as you are monitored for symptoms. 3) Isolate yourself from other people, including your family. 4) Continue to do social distancing, proper handwashing, and other hygienic practices. <p>OfficialDOHgovph @DOHgovph @dohgovph (02) 884-COVID</p> | | <p>What you can do:</p> <ol style="list-style-type: none"> 1) If you are experiencing mild symptoms but are (1) not over 65 years old and (2) without existing conditions, there is no need for you to be tested. Please stay at home and take the prescribed medicine for your symptoms. Please do not self-medicate with antibiotics. 2) If you are (1) experiencing severe symptoms or (2) experiencing mild symptoms but have (a) existing conditions or (3) are 65 years old and over, please go to the hospital. 3) If you have had time to call the DOH COVID-19 hotline at 02 884-COVID (02 884 28442) or 1688 for Smart and PLDT subscribers. 4) Please do not be quick to believe articles and messages about how to treat COVID-19. Verify and validate your information through official DOH channels. 5) Please do not believe disinformation when you claim to have COVID-19 but are not. Testing can be done only in designated, DOH-licensed laboratories. There are a lot of people all over the country who are currently being strengthened so that we can test more people. <p>OfficialDOHgovph @DOHgovph @dohgovph (02) 884-COVID</p> | | <p>What you can do:</p> <ol style="list-style-type: none"> 1) If you are willing to donate PPEs, masks, medicines, and other medical equipment to our health workers, please feel free to contact (02) 8651 7800 loc. 1149. 2) Health workers are requested to keep up-to-date with clinical guidelines shared on official DOH channels. <p>OfficialDOHgovph @DOHgovph @dohgovph (02) 884-COVID</p> | |

Resource mobilization

Grant

DOH has received grants from the below donors up to date:



Notes:

Jollibee Foods corporation donation of food worth 100 million pesos (\$1,948,558)

Globe telecom donated medical supplies worth 5 million pesos (\$97,428) through Red Cross

US-Philippine Society donated \$10,000 to Philippine Army for Hazmat B Suits.

As of 23 March, WHO received more than US\$ 235.7 million and an additional US\$ 29.4 million in pledges to its global appeal. This includes €114 million from the European Union to support 80 priority countries with weakened health care systems and capacity including the Philippines.

Furthermore, 20 top business groups raised over 1.5 billion PHP in cooperation with the Philippine Disaster Resilience Foundation (PDRF) to help poor families that were economically displaced by the ongoing Enhanced Community Quarantine in Metro Manila.

Loan



100M

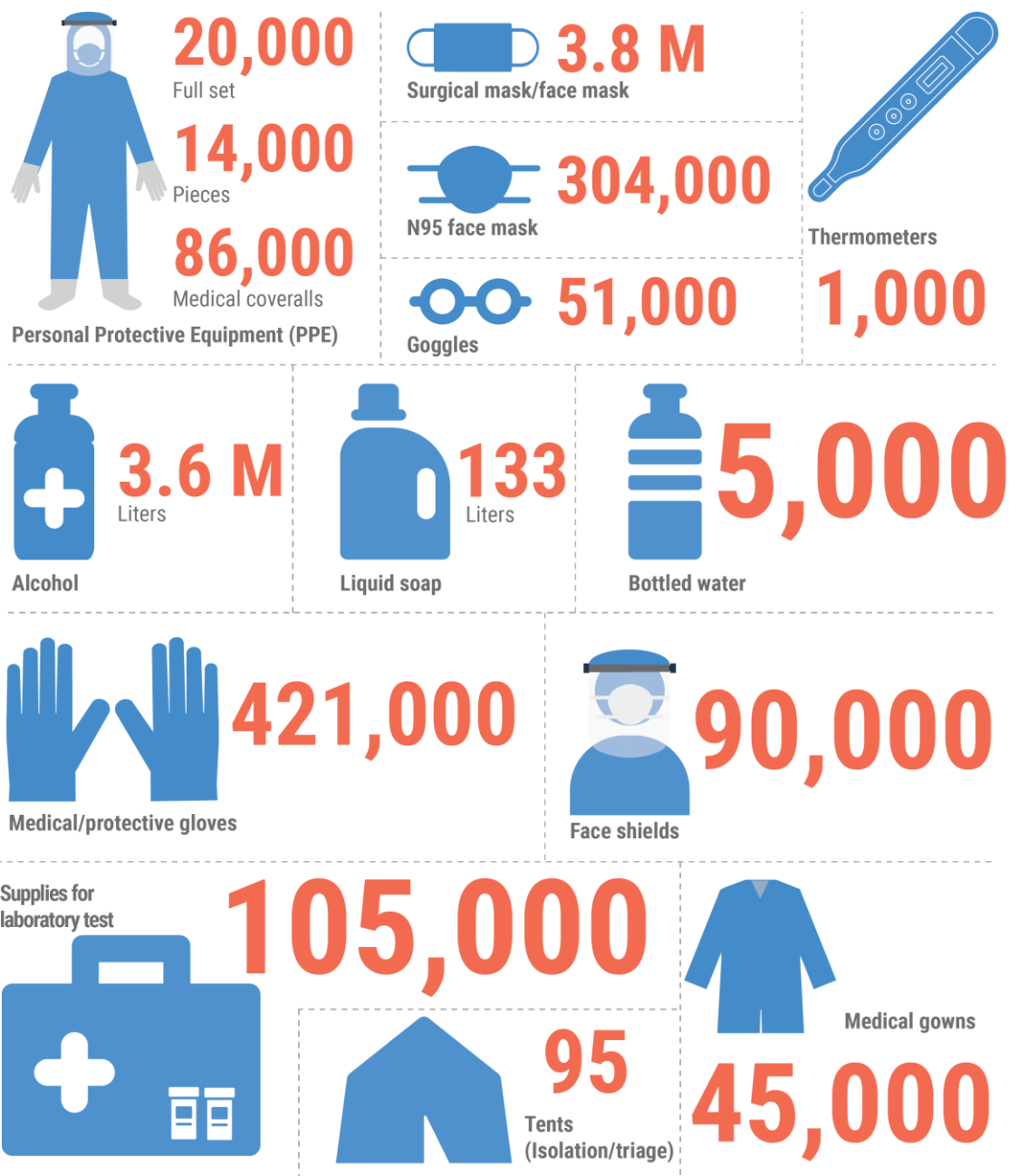
World bank



PHILIPPINES

COVID-19 Medical Assistance

As of 26 March 2020



Donors: Aboltz Foundation; Adhara Trading Corporation; Admiral Transport Inc.; Alliance Global Group/Megaword; Americares Foundation Inc.; Ayala Corp.; Ayala Foundation Inc. and AC Health; BGI Biotechnology (Wuhan) Co, Ltd; Cosmetique Asia Corporation; D&L Industries; Delex Pharma International, Inc.; Ditto Telecommunity; Global Fund – PBSP; GMA Kapuso Foundation; Golden Topper; Good Neighbors International Philippines; Government of China; Government of Singapore; International Atomic Energy Agency (IAEA); Jack Ma; KOHOKUSHINKOUKAI; Lucio Tan Group; M. Pacquiao Foundation; Mammoth Foundation China PRC; Manuel Villar; Maynilad; Monde Nissin; Mr. & Mrs. Rodolfo Medina; MVP Group of Companies; PDRF; Pilipinas Shell Foundation Inc.; PRC; Ramon Tulfo; San Miguel; SciGen Philippines; SCMO; Tzu Chi Foundation Taiwan; Udenna Foundation of the Republic of Korea; Udenna Myongji; UNFPA; UNICEF; USAID; WHO; Willy Keng; World Vision; Zybio, Inc.

The boundaries and names shown and the designations used on this map do not imply official endorsement or acceptance by the United Nations.
 Creation date: 26 March 2020 Sources: DOH, WHO, USAID, PDRF Feedback: ochaphilippines@un.org www.unocha.org www.reliefweb.int

Logistics, procurement, and supply management

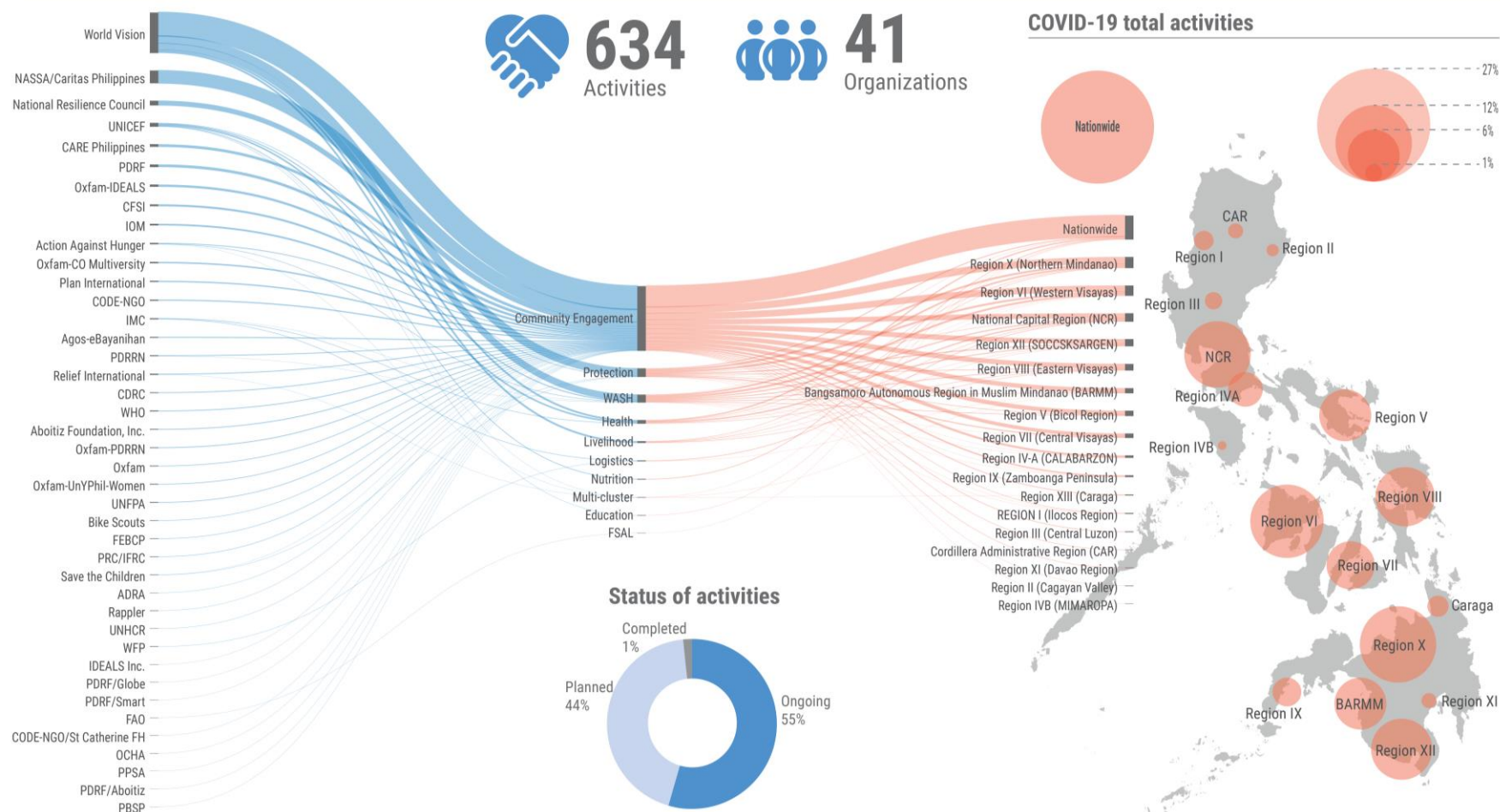
| Who | What | Delivered | Expected |
|--------------------|--|-----------------------------|----------|
| Americares | N95 masks | 1,440 | |
| Chinese government | COVID-19 test kits | 100,000 | |
| | PPE sets (details to follow) | 10,000 | |
| IMC | PPE | 200 | |
| PRC | Medical tents for isolation and treatment | 30 | |
| | Face masks | 20,000 | |
| | PPE | 2,000 | |
| UNFPA | Medical supplies, masks, alcohol, food | 6 Manila district hospitals | |
| | Face masks | 110,000 | |
| | Handheld thermometers | 1,130 | |
| | PPE | 206,059 | 48,780 |
| | Medical Triage Tents and equipment sets | | 6 |
| | Hygiene kits for women | | 1,600 |
| | Clean delivery packs | | 500 |
| | Women Friendly Space Tents | | 3 |
| | Women and Child Protection Unit equipment | | 1 |
| UNICEF | Tents for triage and isolation purposes | 20 | 24 |
| | Disinfection kits | 100 | |
| | Coverall (M, L and XL) | | 72,380 |
| | Masks | | 41,232 |
| | Face shields | | 33,000 |
| WHO | PPE | 12,000 | |
| | Laboratory supplies | | |
| | <i>E-gene EAV kits</i> | 115 | |
| | <i>RdRP-gene kits</i> | 95 | |
| | <i>N gene/E gene/RdRp gene vials</i> | 12 | |
| | Universal Transport Media | | |
| | <i>UTM Viral transport kit</i> | 2,350 | |
| | <i>Regular Flocked Swab</i> | 2,000 | |
| | <i>Flexible Mini Tip</i> | | 2,000 |
| | Extraction kits | | |
| | <i>QIAGEN Qlamp Viral RNA Mini Kit</i> | 14 | 11 |
| | <i>SuperScript III Platinum One-step qRT-PCR</i> | 3 | 2 |
| World Vision | Mobile Storage Unit 10 x 32m | 4 | |
| | Tents (child-friendly space) 7 x 6m | 17 | |



PHILIPPINES

COVID-19 Response Who-What-Where (3W)

As of 23 March 2020



The boundaries and names shown and the designations used on this map do not imply official endorsement or acceptance by the United Nations.
Creation date: 25 March 2020 **Sources:** Partner organizations, PSA/NAMRIA. **Feedback:** ochaphilippines@un.org www.unocha.org www.reliefweb.int