



Situation summary

(Highlights of the current report) Please see the Philippines Department of Health (DOH) daily [Situation Update](#) for further information.



1,441,746
Cases



1,364,960
Recoveries



25,192
Deaths



9,047,357
Vaccinated

- Out of a total 1,441,746¹ confirmed cases reported in the Philippines as of 5 July 2021, 51.6% are male, with the most affected age group 25-34 years (27%).
- 36.8% of the total number of cases are from the National Capital Region (NCR), followed by CALABARZON (17.1%), Central Luzon (8.9%), Central Visayas (5.4%), Western Visayas (5%).
- Out of the total 25,192 confirmed deaths, 58% are male, with the most affected age group 65-74 (28.2%) followed by the age group 60-64 years (13.4%) and the age group 80+ (13.3%).
- 31.7% of the total number of deaths reported are from the NCR, followed by CALABARZON (12.6%), Central Luzon (12.7%), Central Visayas (8.7%), Western Visayas (5.9%).
- Of the total 77,507 confirmed cases in the past two weeks, about 90% of the cases are from the regions, while about 10% of the cases are from NCR.
- The number of laboratories performing tests for COVID-19 using RT-PCR or GenXpert increased to 228. In the past 2 weeks, the laboratory network sustained an average of almost 50,000 tests per day with a daily average cumulative positivity rate ranging between 10% and 11%.
- Bed occupancy nationwide is at 46.5%, Davao Region (65.9%), Western Visayas (65.1%), Eastern Visayas (56.3%), Bicol Region 55.5%, CAR (54.6%), NCR (37.1%).
- 9,047,357 individuals have received their 1st dose of COVID-19 vaccine. As of 5 July, 96.2% of Priority Group A1 (frontline HCW) have received their first dose, while only 30.3% of Priority Group A2 (senior citizens) have received their first dose. The latter represents a 6.2% increase compared to the 19 June vaccination rate, which amounted to 24.1%.
- Variant of concern (VOC) Delta (B.1.617.2) has been detected in two additional overseas workers returning to the Philippines. This brings the total number of Delta cases detected in the Philippines to 19.

¹ Data as of 5 July 2021 can be found in the following [DOH's BEAT COVID-19 report](#).

Transmission stage assessment

The Philippines remains in **Stage 2, localized community transmission** with some geographic areas showing higher transmission intensity and indications of widespread community transmission. There is ongoing evidence of higher transmission in Region III, Region IV-A and in the NCR which are at **Stage 3, large scale community transmission**.

Regional assessments

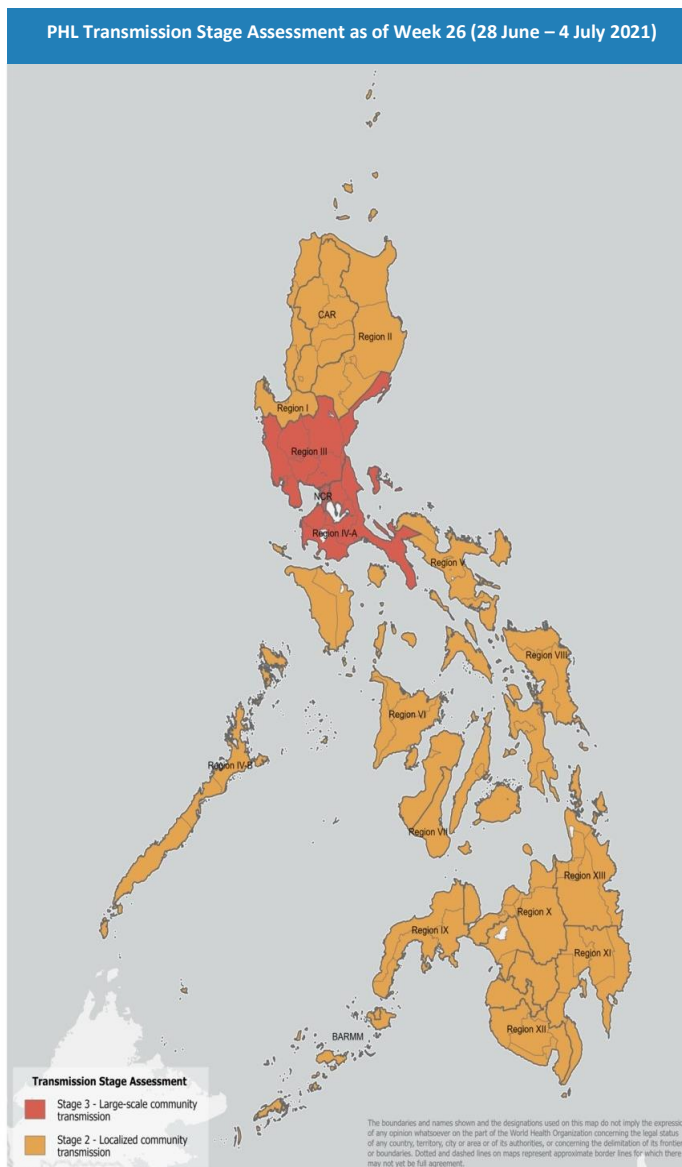
Among the different regions of the Philippines, an increase in the number of cases was detected in Region I, Region IV-B, Region VI and Region XI. High mobility trends are seen across Region IV-A and NCR. Cities that are experiencing a further increase in cases are Iloilo City in Region VI and Davao city in Region XI. An increasing trend on ICU and total bed utilization is seen in certain areas of Region I, II, III and XI.

The WHO Country Office is closely monitoring provinces in Region IV-A, where evacuations have been carried out following the Taal volcano eruption.

In terms of the overall situation of the Philippines, there were 38,265 new cases (34.7 cases per 100,000 population) reported in week 25, slightly lower than the previous week (38,777 new cases, 35.2 cases per 100,000 population). The proportion of fatal cases this week was 0.51% (195/38,265), a decrease from the previous week 1.12% (435/38,777).

The 7-day positivity rate (number of individuals that tested positive/number of individuals tested) was 11.1% (35,755/322,647) for week 26, and 11.7% (38,622/330,184) in the previous week. There was a slight decrease in the daily number (7-day average) of COVID-19 dedicated ICU beds occupied (1,913 beds this week compared to 1,982 beds last week). A decrease in the use of COVID-19 dedicated mechanical ventilators (7-day average) for week 26 (951 ventilators compared to 1,003 ventilators last week) was also observed.

Footnote: Information on COVID-19 cases, testing aggregates and dedicated COVID-19 ICU beds and mechanical ventilators were extracted on 5 July 2021 from the DOH COVID-19 Case Tracker. 2021 population projection for PHL: 110,198,654.





Updates from the last 14 days

Epidemiological updates

As of 5 July 2021, a total of **1,441,746** confirmed COVID-19 cases and **25,192** deaths have been reported in the Philippines. The case fatality ratio is 1.7%.

Epi Update COVID-19	Tests	Cases	Deaths	ICU Occupancy
	691,842	77,507	1,443	57.2%
	Tests past 14 days	Cases past 14 days	Deaths past 14 days	
	14,317,653	1,441,746	25,192	3,449
	Cumulative unique individuals tested	Cumulative cases	Cumulative deaths	ICU beds for COVID-19 cases
	10.6%			
	Cumul. Positivity rate			
Health service provision COVID-19				
	20,583	1,271	31,459	135,321
	Healthcare worker cases as of 5 July (cumulative)	Hospitals admitting COVID-19 patients	Non-ICU beds for COVID-19 patients	TTMF beds for COVID-19 cases (as of 20 June)
	20,162			
	HCW cases as of 28 June (cumulative)			

Strategic approach to COVID-19 Prevention, Detection and Control

Health Service Delivery

- Given the high bed occupancy in Western and Eastern Visayas, the World Health Organization in the Philippines (WHO) discussed with the respective DOH Center for Health Development offices the COVID-19 bed allocation and adherence to care pathways, with a view to optimizing use of ICU capacities.
- The WHO Country Office continues to support the One Hospital Command Center (OHCC) by providing technical assistance and helping to align the OHCC module (monitoring platform for available staffed beds in the hospitals) with the regions.
- In collaboration with the Operation Support and Logistics Pillar and the DOH, an assessment of the Philippines' medical oxygen production capacity and consumption is being undertaken to identify areas for support to the healthcare system's preparedness and surge response.

Laboratory and Testing

- At present, there are 228 DOH-licensed laboratories comprising the COVID-19 laboratory network in the country. Over the past two weeks, a daily average of almost 50,000 tests were conducted, with a daily average cumulative positivity rate between 10% and 11%. WHO is reassessing the current laboratory capacity across in each region and province to identify laboratories that can be further expand their testing capacities.



- The DOH has released the latest whole-genome sequencing report from the Philippine Genome Center (PGC) on July 4, 2021. An additional 2 Delta (B.1.617.2) variant cases were identified, bringing the total cases to 19. The 2 new cases were returning overseas Filipino workers. Beta (B.1.351) cases are the most predominant in the country followed by Alpha (B.1.1.7) variant cases and Theta (P.3) variant cases. With funding from DOH, PGC has procured adequate genome sequencing reagents and kits to sustain the regular biosurveillance activities for the year. Efforts are being redirected to support DOH Epidemiology Bureau in strengthening sample planning and analysis of data.

Surveillance and Contact Tracing

Event-based Surveillance

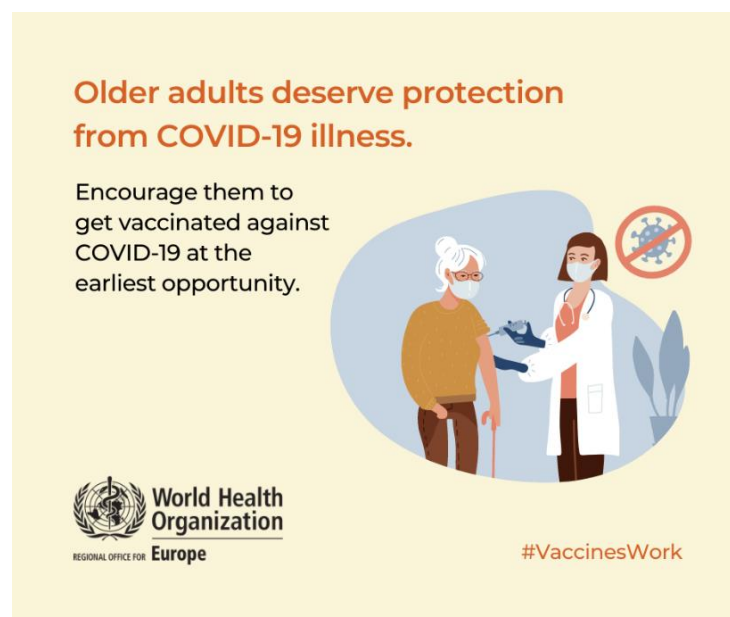
- On 24 June 2021, Manila COVID-19 Field Hospital was inaugurated. The hospital is meant to accommodate around 344 mild to moderate COVID-19 patients.
- Positive Saliva-based RT-PCR test results of the Philippine Red Cross (PRC) are now included in DOH's daily COVID-19 case tally retroactive to January 2021. Up to 365,000 saliva tests have been conducted by PRC since January. Saliva tests are especially suitable for the provinces/areas where there are few molecular laboratories.
- University of the Philippines Mindanao is planning genome sequencing for all specimens from Mindanao region. Previously, samples of specimens to detect the presence of COVID-19 variants in Mindanao have been sent to the Philippine Genome Center (PGC) in Quezon City.

Contact Tracing and Management

- The WHO Country Office is coordinating with the DOH – COVID-19 Surveillance and Quick Action Unit (CSQAU), Department of Information and Communication Technology (DICT), Department of Interior and Local Government (DILG) and National Task Force's Contact Tracing Czar on the specific support initiatives of LGUs for contact tracing, digital contact tracing and the setup of the contact tracing warehouse.
- Field visits were conducted to Quezon City and Baguio City to discuss with Local Governments Units the next steps/implementation of digital contact tracing.

Risk Communication and Community Engagement

- On 1 July 2021, the WHO Country Office along with the DOH and Atty Franklin M. Quijano, Chairman of the National Council of Senior Citizens held a media event to advocate for greater prioritization of A2's for vaccinations. The event was held online but was attended by about a dozen national media outlets and received wide media coverage.
- The WHO Country Office has invited health partners to help increase the uptake of COVID-19 vaccines among senior citizens by mobilizing on-the-ground staff and volunteers to support vaccination, advocating to local government units to improve access to vaccines and convenience at vaccination sites and other creative ways to reach the elderly population. More information on how partners can support can be found [here](#).



Vaccines

- As of 5 July 2021, a total of 11,967,805 doses of COVID19 vaccines have been administered either as first or second dose.
- On the said date, 9,047,357 eligible individuals have received their 1st dose, of which 2,920,448 eligible population have received their 2nd dose of COVID-19 vaccine.

Coverage Rate % (A1) 1ST & 2ND DOSE					
REGION	Masterlisted (Priority Group A1)	Total Vaccinated COMPLETED FIRST DOSE	Over-all Coverage FIRST DOSE	Total Vaccinated COMPLETED 2 DOSES	Over-all Coverage COMPLETED 2 DOSES
NCR	301,749	289,390	95.9%	249,241	82.6%
CAR	45,349	45,141	99.5%	31,251	68.9%
1	87,409	87,409	100.0%	63,882	73.1%
2	65,040	60,511	93.0%	42,309	65.1%
3	150,916	150,916	100.0%	99,295	65.8%
4A	136,169	136,169	100.0%	102,482	75.3%
Mimaropa	46,120	44,263	96.0%	30,242	65.6%
5	85,506	85,506	100.0%	52,232	61.1%
6	129,459	112,172	86.6%	73,042	56.4%
7	131,781	119,711	90.8%	84,436	64.1%
8	82,047	82,047	100.0%	59,339	72.3%
9	56,773	49,936	88.0%	39,447	69.5%
10	84,733	84,733	100.0%	59,581	70.3%
11	84,692	84,692	100.0%	64,961	76.7%
12	60,333	59,570	98.7%	44,811	74.3%
CARAGA	56,968	50,549	88.7%	41,306	72.5%
BARMM	21,451	21,451	100.0%	13,437	62.6%
PHIL	1,626,495	1,564,166	96.2%	1,151,294	70.8%

Percentage of Vaccination Coverage – First Dose and 2nd Completed Dose, per region for Masterlisted Eligible Populations Priority A1 as of 5 July 2021.

Coverage Rate % (A2) 1ST & 2ND DOSE					
REGION	Masterlisted (Priority Group A2)	Total Vaccinated COMPLETED FIRST DOSE	Over-all Coverage FIRST DOSE	Total Vaccinated COMPLETED 2 DOSES	Over-all Coverage COMPLETED 2 DOSES
NCR	1,228,902	665,850	54.2%	324,288	26.4%
CAR	145,441	46,205	31.8%	15,818	10.9%
1	547,788	112,984	20.6%	19,205	3.5%
2	348,275	82,073	23.6%	18,948	5.4%
3	1,145,288	329,783	28.8%	81,415	7.1%
4A	1,117,556	433,444	38.8%	125,170	11.2%
Mimaropa	270,797	52,422	19.4%	16,202	6.0%
5	432,368	52,889	12.2%	17,265	4.0%
6	793,421	136,039	17.1%	26,354	3.3%
7	549,444	124,002	22.6%	35,880	6.5%
8	300,197	74,987	25.0%	22,148	7.4%
9	251,958	54,609	21.7%	14,287	5.7%
10	316,557	104,961	33.2%	22,671	7.2%
11	458,573	141,699	30.9%	14,942	3.3%
12	212,116	60,526	28.5%	22,876	10.8%
CARAGA	210,595	66,410	31.5%	18,988	9.0%
BARMM	102,513	14,490	14.1%	4,224	4.1%
PHIL	8,431,789	2,553,373	30.3%	800,681	9.5%

Percentage of Vaccination Coverage – First Dose and 2nd Completed Dose, per region for Masterlisted Eligible Population Priority A2 as of 5 July 2021.

- On 21 June 2021, key executives from the DOH and development partners met with health experts from Israel at the WHO Country Office to discuss challenges and opportunities to support the COVID-19 vaccine rollout in the Philippines.



From left, Oyunsai Khan Dendevnorov, UNICEF Representative to the Philippines, Dr Rabindra Abeyasinghe, WHO Representative to the Philippines, Avi Ben Zaken, Deputy Director General of Israel's Ichilov Medical Center, Dafna Segol, Healthcare Policy and Innovation Consultant, Adam Segal, Logistics and Operations Manager of Salomon Levid & Elstein Ltd., Nir Balzam, Embassy of Israel's Deputy Chief of Mission, DOH Undersecretary and National Vaccine Operations Center (NVOC) Chair Myrna Cabotaje.

Operations Support Logistics

- To fill supply gaps in 25 health facilities/hospitals the WHO Country Office delivered dexamethasone to the DOH.
- The WHO Country Office facilitated an online training for the DOH on the use of Positive Air Pressure (BiPAP) machines.



Partner Coordination

- On 5 July 2021, UN OCHA convened the Inter-Cluster-Coordination-Group for a situation update on the Taal volcano eruption and related displacements. In the light of the COVID-19 pandemic, it is critical that evacuees are adequately protected and can practice physical distancing to contain further spread of the virus.

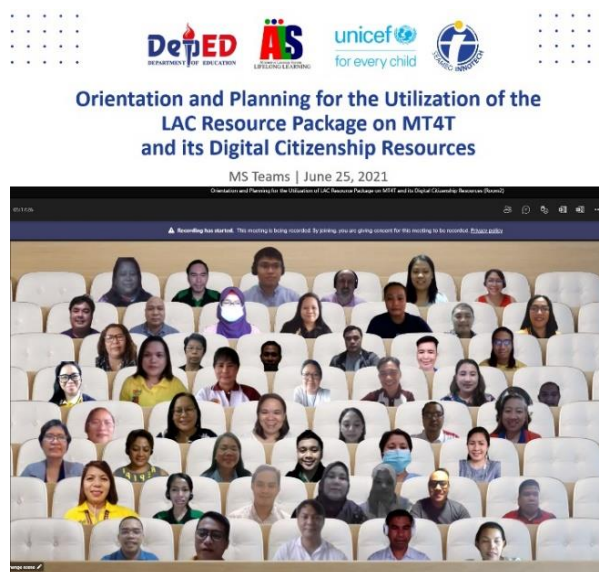
Updates from UNICEF

Strategic Approach

- UNICEF has continued to support the Department of Health (DOH) on RCCE capacity-building and awareness raising sessions to support COVID-19 vaccination through the following:
 - The webinar series 'Building Trust and Responding Effectively to COVID-19 Vaccine Safety Issues and Adverse Events following Immunization' reached 1,609 health promotion officers, information officers, and members of local crisis communication task teams in six episodes.
 - Orientation sessions on COVID-19 vaccine deployment and demand generation were conducted with the Department of Education (DepEd) and Commission on Higher Education, reaching 1,162 people including medical officers, DepEd officials, regional representatives, directors, and teachers.
 - Orientation sessions on COVID-19 were conducted with community health workers and planners from government agencies including Department of Social Welfare and Development, National Commission on Indigenous Peoples, and National Council on Disability Affairs, reaching 1,283 people.
- UNICEF has worked with DOH on the development of the following communication materials to support RCCE activities:
 - audio materials for radio and community public address systems regarding COVID-19 vaccination FAQs, including breastfeeding and pregnancy
 - videos with sign language support on the practice of preventive actions, COVID-19 referral system, and vaccination process
- In celebration of Parenting Month in June, UNICEF Philippines released a statement calling for stronger support to parents and children during the COVID-19 pandemic. One initiative in this area is the joint project *Masayang Pamilya Program* (MaPa), a culturally sensitive, skills-oriented and group-based positive parenting program led by the Department of Social Welfare and Development, UNICEF, Parenting for Lifelong Health, and Ateneo de Manila. Read the article here: <https://www.lionheartv.net/2021/06/parents-need-support-during-covid-19-unicef/>
- UNICEF, in partnership with Save the Children, initiated the creation of Early Childhood Education in Emergencies (ECEiE) Development Partners Coordination Group. The group is envisioned to lead the coordination of the planning and implementation of the interventions on early childhood education in emergencies.
- With UNICEF support, SEAMEO INNOTECH conducted an orientation for officials and implementers of the DepEd Alternative Learning System (ALS) on a new resource package. The package is specifically designed to support continuous learning and experience-sharing among ALS implementers on ICT-



supported teaching and learning which is particularly helpful during the pandemic. This activity is supported by the partnership between DepEd ALS Task Force, SEAMEO INNOTECH and UNICEF Philippines.



Alternative Learning System (ALS) key trainers attend an online orientation and planning on the Learning Action Cell (LAC) resource package for ICT-supported teaching and learning.