



2,851,931 Cases



2,778,943 Recoveries



51,570 Deaths



49,797,374 (59.6%)¹ Fully Vaccinated

Please see the Philippines Department of Health (DOH) daily [Situation Update](#) for further information.

Summary of the epidemiological situation in Philippines²

Key numbers

14,440 Cases past 7 days	23 deaths (27 Dec 2021 - 02 Jan 2022)	22.4% ICU occupancy	3,483 ICU beds for COVID-19 cases	198,469 tests (27 Dec 2021 - 02 Jan 2022)	13.9% Positivity Rate (27 Dec 2021 - 02 Jan 2022)
116 HCW active cases	1,290 Hospitals admitting COVID-19 patients	34,154 Total hospital beds for COVID-19 patients		20.5% hospital beds for COVID-19 occupied	99,410 TTMF beds for COVID-19 cases (2 Jan 2022)

COVID-19 cases

As of 2 January 2022, a total of 2,851,931 COVID-19 cases and 51,570 (1.8%) COVID-19 related deaths had been recorded in Philippines since the beginning of the COVID-19 pandemic. Since the peak of COVID-19 cases in early September 2021, throughout the Philippines, the daily number of reported COVID-19 cases has been decreasing steadily until 25 December 2021 when sudden and sharp increase of cases started (Figure 1). In week 52 (27 Dec – 2 Jan), a total of 14,440 cases were recorded, a 670% increase in cases compared to week 51 (20 – 26 Dec) when only 2,150 cases were recorded. In week 52, the highest weekly number of cases and highest increase compared to week 51 were observed in NCR: 9791 cases and 1132% increase; Region IV-A: 2056 cases and 861% increase; Region III: 856 cases and 507% increase. In week 52, the incidence (number of newly recorded COVID-19 cases per 100,000 population), was 13.1.

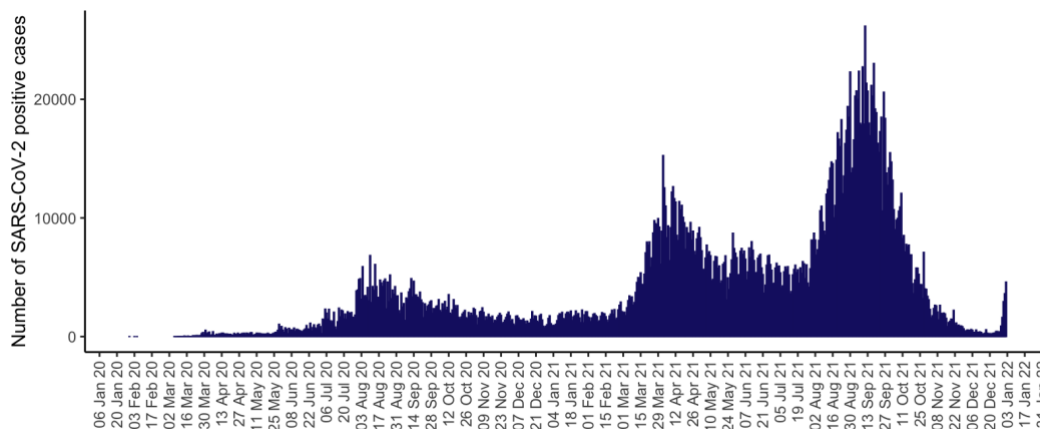


Figure 1. Daily reported COVID-19 cases in the Philippines (15 March 2020 – 2 January 2022)

¹ Percent of total eligible population (12 years and older)

² All data was extracted from on 3 January 2022 from DOH COVID-19 Case Tracker. National population size used was the projection for 2021 (n=110,198,654).



Throughout the pandemic, the largest proportion of COVID-19 cases was detected in those aged 20-39 years (Figure 2). As well, in week 52 (starting on 27 Dec), more than half of case were detected in age groups 20-29 and 30-39; 4,199 (29%) cases and 3,765 (26%) cases, respectively. When looking at age group specific incidence i.e. number of cases per 100,000 population in a specific age group, the oldest age groups were the most affected since the beginning of the pandemic (this observation is partially biased due to older age groups having higher probability of exhibiting symptoms/having severe disease and therefore being tested).

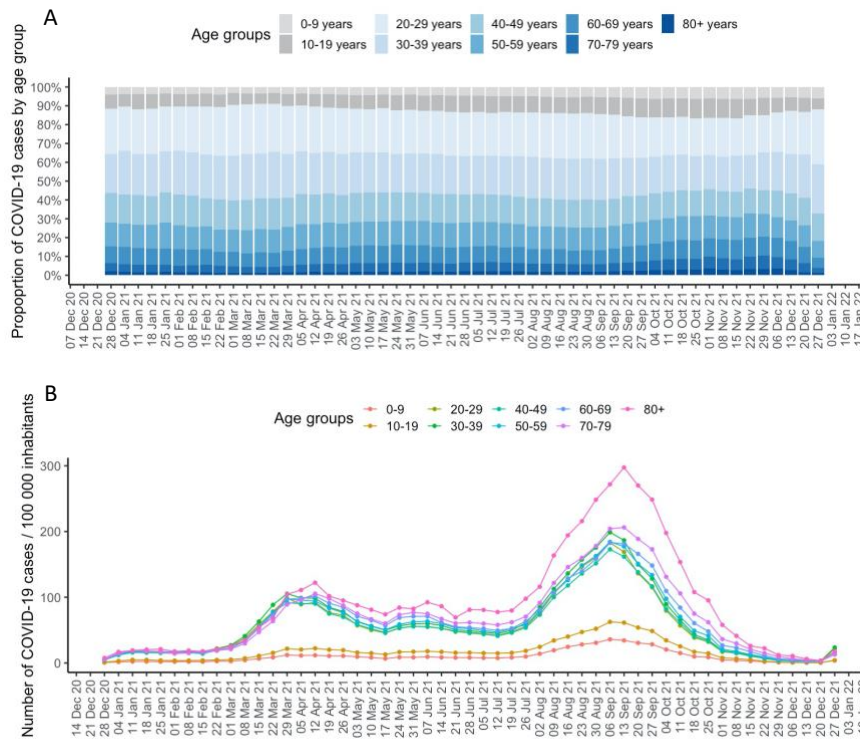


Figure 2. Age distribution and age group incidence of weekly COVID-19 cases in the Philippines in 2021
 A – Weekly distribution of cases per age group; B – Weekly incidence of cases per age group. Incidence defined as number of cases in particular age group per 100,000 population in that age group.

Geographical distribution

Table 1. Regions ordered by the number of active cases as of 31 December 2021

1	National Capital Region (NCR)	10,918
2	Region IV-A: CALABARZON	3,196
3	Region III: Central Luzon	1,790
4	Region VII: Central Visayas	669
5	Region VI: Western Visayas	599
6	Region XII: SOCCSKSARGEN	568
7	Region XI: Davao Region	524
8	Region I: Ilocos Region	472
9	Region II: Cagayan Valley	461
10	Region XIII: CARAGA	367



Clinical characteristics of COVID-19 cases and healthcare utilization

DOH recorded 21,418³ active cases as of 2 January 2022, with the breakdown of active cases (based on the time case investigation form was completed) as follows:

- Asymptomatic: 769 (3.6%)
- Mild: 15,644 (73.1%)
- Moderate: 3,081 (14.4%)
- Severe: 1,589 (7.4%)
- Critical: 335 (1.6%)

There was a declining trend of hospital bed utilization and ICU bed utilization in Philippines until end of December 2021, when number of occupied total COVID-19 beds and COVID-19 ICU beds started to increase (Figure 3) simultaneously with increase of COVID-19 cases. On 2 January, overall occupancy of hospital beds allocated for COVID-19 patients was 20.5% and occupancy of COVID-19 allocated ICU beds was 22.4%. The 7-day average number of occupied COVID-19 ICU beds has increased in week 52, compared to week 51 (779 compared to 670). Additionally, more mechanical ventilators were used, 335 in week 52 and 295 in week 51.

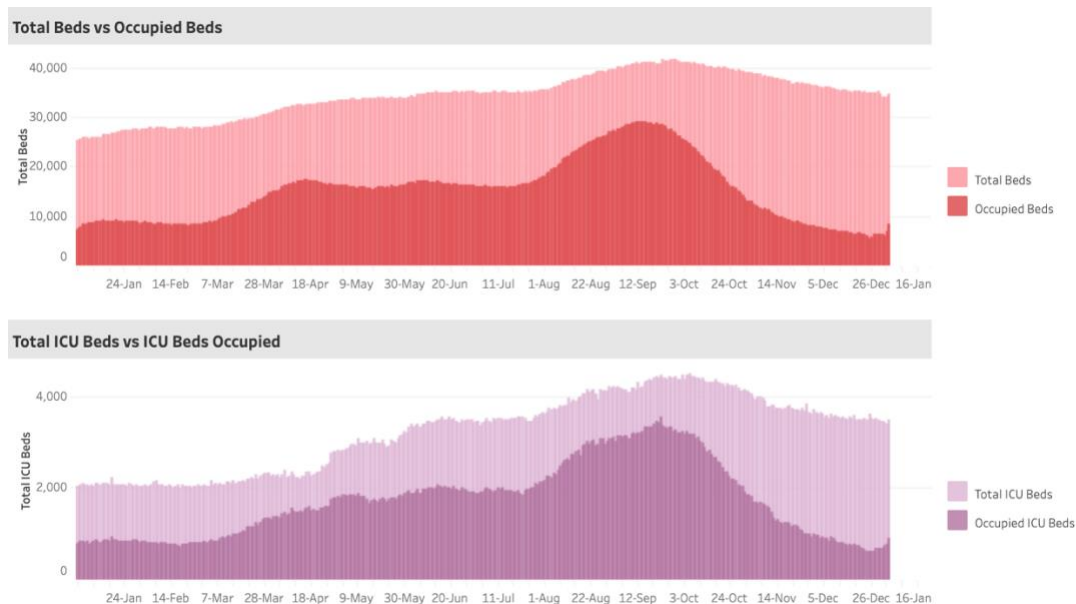


Figure 3. Total bed and ICU bed distribution over time stratified by occupancy (Philippines) in 2021

Transmission stage assessment

Based on epidemiological indicators (number of cases, weekly incidence, positivity and testing rate, ICU bed occupancy, mechanical ventilator occupancy) and event-based surveillance, the Philippines remains at Stage 2, localised community transmission. However, NCR, Region III, and Region IV-A are at Stage 3, large-scale community transmission.

COVID-19 deaths and all-cause mortality (ACM)

Since the beginning of the COVID-19 pandemic 51,570 COVID-19 deaths were reported in Philippines. The highest number of deaths occurred in September 2021 (Figure 4). Overall, 62% of deaths were recorded in the population above 60 years of age (26% aged 60-69 years, 22% aged 70-79 years, and 14% aged 80

³ Data as of 19 December 2021 can be found in [DOH's BEAT COVID-19 report](#).



years and older. Most deaths were recorded in NCR 22%, Central Luzon 12%, CALABARZON 11%, Central Visayas 11%, and Western Visayas 8%.

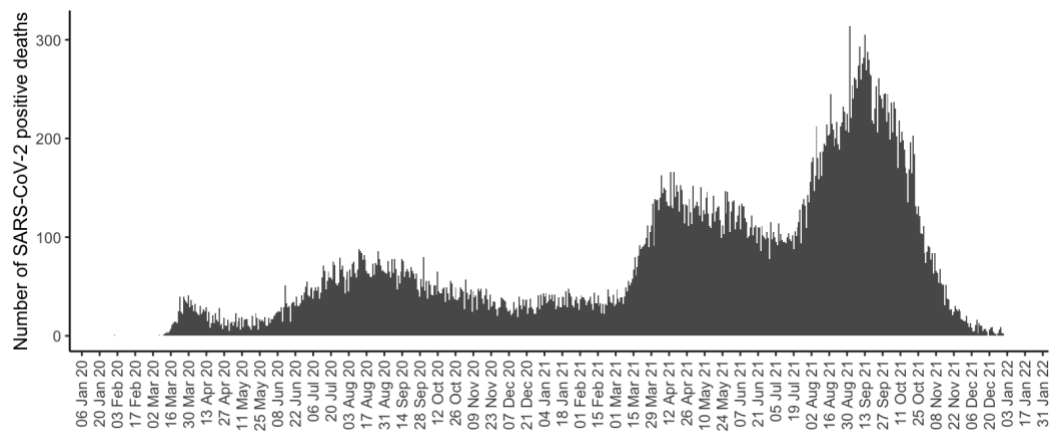
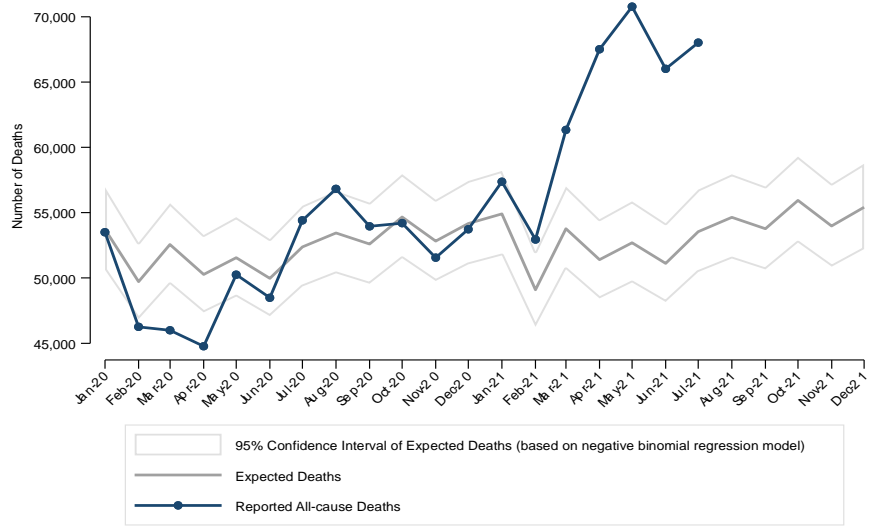


Figure 4. Daily number of COVID-19 deaths in the Philippines by date of death since March 2020

The impact of the COVID-19 pandemic on mortality is not entirely captured in the data on reported COVID-19 deaths. Limited testing capacity, disruption of health services, and possible impacts on other causes of death can all influence the reported number of deaths that are directly or indirectly caused by COVID-19. Therefore, analysis of all-cause mortality and potential excess mortality (defined as the difference between expected and observed mortality in a given time period) can be used as additional source of information. In the Philippines, excess mortality was observed in the period from February 2021 until July 2021 (current all-cause mortality is only available until August 2021 due to delay with death registration and verification, data from August 2021 was excluded due to incompleteness) (Figure 5). This observation is in line with the increase in COVID-19 cases that started in February 2021 (Figure 1). The increase in cases was followed by an increase in hospital bed occupancy and ICU bed occupancy (Figure 3). Lastly, starting from March 2021 there was an increase in reported COVID-19 deaths (Figure 4).



Source: Philippine Statistics Authority

Figure 5. All-cause mortality and excess mortality in the Philippines January 2020 through July 2021
Y-axis shows number of deaths per month from all causes; grey line shows number of estimated expected deaths based on pre-pandemic historical all-cause mortality data from 2015-2019, grey area around expected deaths shows 95% confidence interval of expected death estimation; ACM data from August 2021 was excluded due to incompleteness



Vaccination

As of 3 January December 2022, 60.0% of the target population (12 years and older) were fully vaccinated. Among healthcare workers, who are at increased risk of exposure to SARS-CoV-2, the coverage is extremely high 120% (more than 100% because the number of healthcare workers reached was higher than the masterlist, with 30% already received a booster dose. Currently, there is particular focus to increase coverage of vulnerable populations; elderly population (A2 priority group), persons with comorbidities (A3) and poor population (A5). Their respective vaccination coverage in Philippines is 68.4%, 97.2%, and 52.7% (Figure 6). However, it is important to note that there is variation in vaccination coverage between regions, for example, coverage of the A2 population is below 50% in regions: 7, 11, 4B and BARMM (Table 2). Vaccination coverage of the A5 group is below 50 % in 10 regions (Table 3).

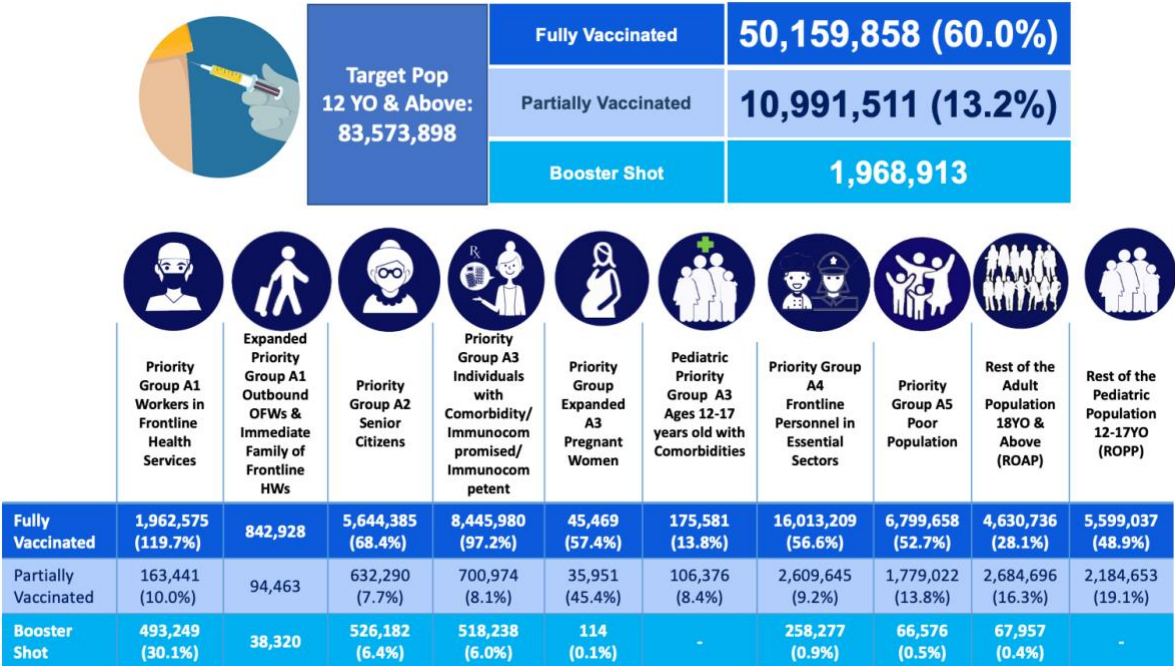


Figure 6. Overview of COVID-19 vaccination status of Philippines' population as of 3 January 2022



Table 2. Overview of vaccination of A2 population per region in Philippines (3 January 2022)

Cumulative Coverage Rate % (A2)							
REGION	Masterlisted (Priority Group A2)	Fully Vaccinated	%	Partially Vaccinated	%	Booster Shot	%
NCR	1,050,589	980,863	93.4%	32,946	3.1%	202,998	19.3%
4A	1,117,556	933,823	83.6%	92,472	8.3%	100,762	9.0%
CAR	150,507	113,113	75.2%	8,506	5.7%	15,169	10.1%
2	350,464	261,611	74.6%	24,985	7.1%	20,484	5.8%
8	300,197	216,813	72.2%	34,303	11.4%	5,537	1.8%
10	316,557	224,597	70.9%	43,499	13.7%	8,136	2.6%
1	536,376	363,168	67.7%	44,029	8.2%	17,982	3.4%
6	655,860	436,231	66.5%	43,444	6.6%	21,035	3.2%
9	237,311	152,861	64.4%	32,686	13.8%	4,004	1.7%
CARAGA	198,874	126,111	63.4%	7,990	4.0%	1,286	0.6%
3	1,145,288	718,918	62.8%	60,272	5.3%	85,905	7.5%
5	473,075	282,256	59.7%	38,228	8.1%	11,580	2.4%
12	322,224	164,425	51.0%	28,109	8.7%	6,851	2.1%
Mimaropa	261,592	128,024	48.9%	17,409	6.7%	7,556	2.9%
11	458,573	222,140	48.4%	45,489	9.9%	5,906	1.3%
7	567,177	269,618	47.5%	59,267	10.4%	8,930	1.6%
BARMM	112,311	49,813	44.4%	18,656	16.6%	2,061	1.8%
PHIL	8,254,531	5,644,385	68.4%	632,290	7.7%	526,182	6.4%

Table 3. Overview of vaccination of A5 population per region in Philippines (3 January 2022)

Cumulative Coverage Rate % (A5)							
REGION	Projected Priority Group A5	Fully Vaccinated	%	Partially Vaccinated	%	Booster Shot	%
NCR	663,588	1,922,479	289.7%	148,883	22.4%	30,003	4.5%
4A	955,143	961,126	100.6%	163,185	17.1%	15,003	1.6%
CAR	179,565	121,105	67.4%	18,538	10.3%	798	0.4%
6	967,299	586,331	60.6%	117,559	12.2%	8,764	0.9%
2	315,918	177,514	56.2%	58,169	18.4%	334	0.1%
1	618,150	332,124	53.7%	78,124	12.6%	610	0.1%
3	882,423	471,167	53.4%	117,478	13.3%	3,724	0.4%
11	771,534	320,338	41.5%	94,033	12.2%	1,086	0.1%
7	854,691	322,534	37.7%	144,409	16.9%	308	0.0%
9	896,151	270,826	30.2%	149,359	16.7%	979	0.1%
10	798,837	233,289	29.2%	81,113	10.2%	272	0.0%
8	839,772	239,561	28.5%	92,719	11.0%	395	0.0%
5	1,111,587	277,468	25.0%	144,130	13.0%	756	0.1%
Mimaropa	583,026	136,449	23.4%	41,727	7.2%	1,076	0.2%
CARAGA	566,586	124,908	22.0%	84,157	14.9%	44	0.0%
12	743,511	161,543	21.7%	82,588	11.1%	206	0.0%
BARMM	1,163,412	140,896	12.1%	162,851	14.0%	2,218	0.2%
PHIL	12,911,193	6,799,658	52.7%	1,779,022	13.8%	66,576	0.52%



Laboratory: testing rates, positivity rates and genomic surveillance

The testing rate (number of tests per 1,000 population) has been decreasing in the Philippines. In week 52, the testing rate was 1.7 tests per 1,000 population. The 7-day positivity rate (number of individuals that tested positive/number of individuals tested) has significantly increased in week 52 recording 13.9% (26,289 /188,550), compared to week 51 at 1.6% (2,705 /174,619).

The Delta variant is still the main variant of concern (VOC) detected in samples sent for whole genome sequencing (WGS). On 26 November 2021, WHO designated a new VOC – Omicron. As of 2 January 2022, Omicron importation was detected in 4 persons arriving to the Philippines. Additionally, 3 Omicron cases with no history of travel or contact to a traveler were detected. Additionally, the sharp and sudden surge of COVID-19 cases could suggest potential community transmission of Omicron, accelerated due to increased mixing and close contact of people during the holiday season.

Strategic approach to COVID-19 Prevention, Detection and Control

Information and planning and Regional Outreach

In collaboration with I&P, conducted a workshop with EB and Metro Manila CHD RESU on assessment of risks and response to COVID-19 and other notifiable diseases. The workshop took place between 8 – 10 December 2021.



Photo from the workshop with EB and Metro Manila CHD RESU

Mental Health and Psychosocial Support

Over 100+ Health Care Providers from the different regions have successfully completed via Virtual/Online platform on the locally adapted Mental Health Gap Action Programme (mhGAP) Intervention Guide version 2.0 and mhGAP Operations Manual, led by the Department of Health and our implementing partner APW (Ateneo School of Medicine and Public Health) - as supported/funded by the WHO Special Initiative for Mental Health in the implementation of the Mental Health Act. This will help in increasing access to quality services for the Filipinos. The virtual training consisted of synchronous and asynchronous sessions. More info on the WHO Special Initiative for Mental Health >> WHO Special Initiative for Mental Health: Philippines



Date / Time		Activity
November 19 to December 11		<p>mhGAP Training of Healthcare Providers</p> <p>ToTS participants are expected to train 25 HCPs. HCPs will be going through asynchronous learning materials on Moodle and joining their Trainer (ToTS participant) in synchronous sessions.</p> <p><i>Note: Synchronous sessions below are suggested can be rescheduled on a per site basis in coordination with the trainers</i></p>
November 19		Module 0: Orientation to mhGAP
November 19 - 23		Module 1: Depression (Asynchronous)
November 24 - 27		Module 2: Psychosis
November 27	8:00 - 12:00	Depression and Psychosis: Case Discussion (Synchronous)
November 28 - December 1		Module 3: Suicide
December 2 - 6		Module 4: Epilepsy
December 6	8:00 - 12:00	Suicide and Epilepsy: Case Discussion (Synchronous)
December 7 - 11		Module 5: Review
December 9	9:00 - 11:00	Review of Pharmacologic Management (Synchronous)
December 10	9:00 - 11:00	Review of Psychosocial Management (Synchronous) Planning for Implementation (Synchronous)
December 11		Post-test and Completion of Training

Program and the schedule of the virtual training: mhGAP Training of Healthcare providers

Risk Communication and Community Engagement

WHO coordinated and covered the ceremonial handover of 200 oxygen concentrators and relevant consumables donated by the European Union and World Health Organization to the Department of Health. Read the press release [here](#).



Ceremonial handover of 200 oxygen concentrators donated by EU and WHO to Department of Health



During and after the National Vaccination Days (NVDs, Part 1), the WHO RCCE team provided 10 social listening reports on Vaccine Safety and AEFI Signals. The DOH HPB team shared the reports to the National Vaccination Operation Center (NVOC) and relevant Regional Adverse Events Following Immunization Committee (RAEFIC) for their quick action.

WHO covered the arrival 1.8 million Janssen COVID-19 vaccine doses which arrived on 14 December 2021. A total of 14.5 million doses shared by the European Union through the COVAX Facility were confirmed to arrive last week, making the total COVAX donations to the Philippines to over 51 million. This is more than the 44 million doses pledged by the COVAX Facility to protect the most vulnerable in the country.



Arrival of arrival 1.8 million Janssen COVID-19 vaccine doses donated to Philippines

On 15 December 2021 in Cabanatuan City, covered the launch of second round of "Bayanihan, Bakunahan," the National Vaccination Days which aimed at administering 7 million more COVID-19 jabs to Filipinos. Regions I, II, III, IV-B, Cordillera Administrative Region (CAR), and the National Capital Region (NCR) rolled out the vaccination drive from 15 to 17 December 2021, while the campaign is postponed to 20 to 22 December in regions affected by Typhoon Odette.



Launch of National Vaccination days part 2 in Cabanatuan City

WHO RCCE team produced and published WHO Philippines' 2021 Year-End video that shares highlights from the staff's support to the country's COVID-19 response and delivery of essential services.

WHO RCCE team produced and published an animated video on continuing to practice the minimum public health standards, from the perspective of a grandmother yearning to go out but understands the need to protect oneself and one's family. This video was produced in collaboration with the Department of Health's Health Promotion Bureau and Communications Management Unit.



Screen shot of the animated video on continuing to practice the minimum public health standard



Produced and published a video tribute to health care workers, featuring three frontliners from Metro Manila, La Union, and Davao, who had their personal and professional hardships while doing their duties in the COVID-19 response.

Published reminders on preparing for the typhoon amid COVID-19 and protecting oneself and others at home or at an evacuation center, in light of Typhoon #OdettePH affecting large areas of Visayas and Mindanao.



Messaging and reminders on how to prepare for typhoon Odette amid COVID-19

WCO published social media content on #SafeTravel and #CelebrateSafely during the holiday season.



Social media content on #SafeTravel and #CelebrateSafely during the holiday season.

For National Vaccination Days Part 2, the WHO RCCE team provided social listening reports on Vaccine Safety and AEFI Signals. As requested by the DOH HPB team, WHO added regional assessments in its monitoring report, as well as vaccine narratives during the reporting period.



Community engagement

WCO participated in the UHC CE webinar on 10 December 2021 (organized by WPRO) through its CSO partner, Families Choice based in Benguet. Families Choice presented, “Championing offline community owned interventions in the digital era,” this is the COVID-19 CSO initiative for small scale mining communities in Itogon, Benguet. The webinar showcased ongoing work on community engagement and the social determinants of health through two initiatives: **Strengthening Civil Society Engagement in the COVID-19 Response at National and Local Levels** (CSO Initiative) and **CE Research Initiative**. The case studies and projects presented from these initiatives reflected how countries have used community engagement as an approach to better understand existing barriers faced by vulnerable populations.

Operations Support Logistics

- WCO sent 600 antigen rapid test kits to typhoon Odette affected areas in Caraga region to support COVID-19 testing, as testing was stopped due to damaged facilities and electricity cuts

Partner Coordination

Updates from USAID

USAID assists Manila and Caloocan cities ramp up their vaccination initiatives. USAID, through its ReachHealth project, provided vaccination jeepney shuttles, mobile vaccination teams, and medical supplies and COVID-19 test kits to support the Manila and Caloocan city government units during their intensified vaccination drives. Manila has been one of the local government units that are efficient in providing vaccines to their communities and they are now focusing on providing the COVID-19 jab to teens. With this, USAID provided a jeepney shuttle service for adolescents to be safely transported to their designated vaccination site, along with their parents/guardians. The shuttles are expected to help administer 9,000 shots per month. USAID also provided Manila with medical supplies and equipment to quarantine facilities; additional 5,000 Viral Transport Media and 5,000 Rapid Antigen Test kits. In Caloocan

City, USAID provided mobile vaccination jeepneys and deployed mobile vaccination teams which are expected to contribute additional 16,800 shots per month. The mobile vaccination teams will also assist in the roll-out of pediatric vaccination of the city. USAID also provided additional swab testing commodities.





USAID supports mental health well-being of frontline health workers: USAID, through its “Meeting Targets and Maintaining Epidemic Control (EpiC COVID-19)” led by FHI 360, facilitated a coordination and consultation meeting among key players and stakeholders to highlight mental health as part of its COVID-19 response and recovery efforts. More than 70 representatives from the government, private sector, professional societies, development partners, USAID’s implementing partners and health workforce participated. A public health specialist from EpiC Headquarters engaged the participants with an interactive exercise, which highlighted the most common mental health issues and challenges that the frontline health workers experience brought by the pandemic. Subsequently, DOH, WHO, UNICEF, USAID’s RenewHealth, and Philippine Psychiatric Association shared global and local best practices and lessons learned in their current psychological and mental health support activities and initiatives.

This meeting jumpstarts a series of related activities on this front and helps synergize efforts and resources in a collaborative approach to support the total well-being of our frontline health workers . USAID continues to support the health workforce in building their capacity and resilience through the pandemic.



More than 70 representatives from the government, private sector, professional societies, development partners, USAID and its implementing partners, and health frontliners convened to discuss and highlight the importance of mental health, especially for the health care workers, and how everyone can work together in integrating it as part of the country’s COVID-19 response.

USAID supports vaccination of people with disability (PWD) and senior citizens: In Mindanao, vaccine misinformation has penetrated communities and resulted in hesitancy to get inoculated. Solving this means getting more champions who will share testimonies and motivate others to get the COVID-19 vaccine. To do this, USAID ReachHealth partnered with the Persons-with-Disabilities Affairs Office (PDAO) and Office of Senior Citizen Affairs (OSCA) of Maguindanao in organizing a Townhall Meeting and RESBAKUNA deployment last November 24 for 100 persons with disabilities (PWDs) and senior citizens in Datu Piang. The town hall meeting was an opportunity that sparked positive conversations on the vaccines, present facts and updates on the COVID-19 vaccines and share testimonials to assure seniors and PWDs of vaccine effectiveness and efficacy. After the town hall meeting, around 70 PWDs and elderly people were screened and received their immunization.



Dozens of senior citizens and PWDs awaited as the program commences. The town hall meeting was a platform to awaken vaccine champions within seniors and PWDs and encourage a positive outlook and uptake on its protection and efficacy. BARMM region has suffered severely from low vaccine uptake, with only less than 30% of senior citizens fully vaccinated to date.



Babu of Datu Piang in Maguindanao has an implantable device in her heart. Before the town hall event, she was very afraid to get vaccinated because she feared she might faint due to her frail heart. But two elderly women sitting beside Babu in the venue convinced her that it was safe and they did not encounter any severe side effects when they got a COVID-19 vaccine jab three months ago. After a series of discussions, Babu finally decided to get vaccinated.



Mr. Ramil Esmama, Head of the LGU Persons-with-Disabilities Affairs Office (PDAO) of the Municipality of Parang, delivered his testimonies on how safe and effective the COVID-19 vaccines are. He reiterated in his testimonial that vaccines save lives and we need each other protected. As persons with disability, they cannot afford to catch the virus, and so, this vaccine will grant them a layer of protection. He encouraged PWDs and elderly to spread the word to other senior citizens, PWDs, and their families to get vaccinated.

Updates from ICRC

Support to Philippine Red Cross

Continued financial and technical support to PRC on its vaccination efforts in close collaboration with health authorities at LGU, regional and national levels.

- The PRC Bakuna Centers, Bakuna Bus and Bakuna Teams participated in the National Vaccination Days on Nov 29-Dec 1 with 83,603 doses administered and Dec 15-17 with 16,904 doses administered.
- Mobile vaccination teams (Bakuna Teams) from the following chapters were deployed to support LGU vaccination campaigns -- Bukidnon, Misamis Occidental, Gingoog City, Davao del Sur, General Santos City, Sultan Kudarat, Agusan del Norte-Butuan, Surigao del Norte, Lanao del Sur-Marawi, Cotabato-Maguindanao, Iligan City
- Post-vaccination debriefing of the staff and volunteers who mobilized Bakuna Bus to places of detention in Bogo, Talisay and Danao. The strong coordination between detention authorities, LGU and the Red Cross paved the way to ensuring 100% vaccination coverage of inmates in the 3 jails during the period covered.



Discussion with PRC staff & volunteers on vaccination drive in places of detention; 11Dec, Bogo City

Vaccination in Places of Detention

Follow-up and continuing advocacy and support of detention with health authorities to ensure vaccination for PDLs in other jails and prisons. The allocation from Center for Health Development Metro Manila through Muntinlupa City Health Office of 25,000 doses of vaccine has been administered to the inmates. With this and continued infection prevention and control measures, they have resumed family visits for inmates at NBP.

Support to Health Authorities

Turn-over of assistance to **Sulu Provincial Hospital**, including medical equipment, PPEs, drugs and medical supplies



Sulu Integrated Provincial Health receiving medical items from ICRC; 21Dec, Zamboanga City