

## Overall strategy

The World Health Organization (WHO) Regional Office for the Western Pacific (the Regional Office) encourages countries to improve detection of COVID-19 transmission, to respond to detection with quick and targeted measures, and to focus efforts on preventing transmission among the vulnerable.

## Key highlights

- New cases of COVID-19 were reported in 21 countries or areas in the Western Pacific Region (WPR) within the past seven days (American Samoa 1, Australia 14 671, Brunei Darussalam 1 375, Cambodia 965, China 364, Fiji 217, French Polynesia 67, Guam 323, Japan 2 003, the Republic of Korea 10 213, Lao People's Democratic Republic (PDR) 4 047, Malaysia 40 358, Mongolia 7 548, New Caledonia 524, New Zealand 687, Northern Mariana Islands 2, Papua New Guinea 3 131, the Philippines 33 918, Singapore 24 370, Vanuatu 2 and Viet Nam 25 919).
- Five countries or areas in the WPR that had previously reported cases have reported no new cases within the past seven days: (Marshall Islands (343 days), Palau (17 days), Samoa (254 days), Solomon Islands (200 days), and Wallis and Futuna (173 days)).
- Nine Pacific island countries and areas have not reported a case to date: (Cook Islands, Kiribati, Micronesia (Federated States of), Nauru, Niue, Pitcairn Islands, Tokelau, Tonga and Tuvalu).

### Epi update

COVID-19

Member States	Cases	Deaths
<b>21</b> countries or areas reporting cases in the past 7 days	<b>170 705</b> past 7 days	<b>2 667</b> past 7 days
<b>14</b> countries or areas reporting ZERO cases for more than 7 days	<b>9 312 827</b> cumulative cases	<b>127 797</b> cumulative deaths

### Deployments

COVID-19 response

<b>381</b> total deployments	<b>301</b> deployments completed	<b>33</b> actively supporting country offices	<b>19</b> actively supporting regional office	<b>28</b> currently supporting remotely
---------------------------------	-------------------------------------	--------------------------------------------------	--------------------------------------------------	--------------------------------------------

### Supplies and logistics for health care workers shipped to 38 destinations in the Western Pacific Region (as of 27 October 2021)



**13 347 800**  
surgical masks



**3 897 079**  
particulate respirators



**869 130**  
medical gowns



**317 275**  
goggles



**1 110 502**  
face shields



**4 010 700**  
pairs of gloves



**27 046**  
alcohol-based hand rub (100mL)



**682 312**  
laboratory tests



**417 700**  
point of care tests



**1 889 440**  
swab kits



**435**  
ICU ventilators



**2 273**  
oxygen concentrators



**18 320**  
pulse oximeters

## Weekly situation updates

- In the WPR, 26 countries and areas have reported COVID-19 cases since December 2019. Between 20 and 26 October 2021, a total of 170 705 cases with 2 667 deaths were reported, for a cumulative 9 312 827 cases with 127 797 deaths (proportion of fatal cases (PFC) 1.4%) as of 27 October 2021, 17:00 (GMT+8). Available data indicate that countries or areas in the WPR have identified imported cases<sup>1</sup> or localized community transmission, while subnational areas in some WPR countries and areas have identified large-scale community transmission. Figure 1 shows the geographical distribution of cases reported in the last seven days.
  - Countries and areas with large-scale community transmission:
    - Fiji (Central Division, Western Division), Guam, Lao PDR (Vientiane Capital), Mongolia (Arkhangai, Bayankhongor, Bayan-Ulgii, Darkhan-Uul, Dornod, Gob-Altai, Khentii, Khovd, Khuvsgul, Orkhon, Selenge, Ulaanbaatar, Uvurkhangai, Zavkhan), New Caledonia, the Philippines (National Capital Region, Region 3, Region 4-A), Viet Nam (Binh Duong, Dong Nai, Ho Chi Minh City).
  - Countries and areas with localized community transmission:
    - Fiji (Eastern Division), French Polynesia, Japan, the Republic of Korea, Lao PDR (Bokeo, Champasack, Khammuane, Luangnamtha, Luangprabang, Saravan, Savannakhet, Vientiane province), Mongolia (Bulgan, Gobisumber, Sukhbaatar, Tuv, Uvs), the Philippines (rest of 14 regions), Viet Nam (An Giang, Ba Ria – Vung Tau, Bac Ninh, Ben Tre, Binh Thuan, Can Tho, Dong Thap, Ha Nam, Ha Noi, Khanh Hoa, Kien Giang, Long An, Nghe An, Soc Trang, Tay Ninh, Tien Giang, Tra Vinh, Vinh Long).

Globally, 243 857 028 COVID-19 cases with 4 953 246 deaths have been reported in 225 countries or areas (PFC 2.0%) as of 26 October 2021 17:00 (CEST). Recent daily new cases in the African Region, Region of the Americas, South-East Asia Region, and the Eastern Mediterranean Region appear to be decreasing while the trend of daily new cases of the European Region appears to be increasing.

---

<sup>1</sup> 0-No cases—no cases detected and no clear signals of transmission for at least 28 days (or two incubation periods); 1-Imported cases—cases reported in the past 28 days are imported or linked to importation within 3 generations, and there are no clear signals of local transmission; 2-Localized community transmission—cases reported in the past 28 days are localized and cannot be linked to importations, though most are linked to a cluster, and there are no clear signals of large-scale community transmission; 3-Large-scale community transmission—most cases reported in the past 28 days have no known link to a cluster and are spread across the area, and there are clear signals of increasing transmission and severe outcomes.

Figure 1. Countries or areas with reported confirmed cases of COVID-19, covering the period from 20 to 26 October 2021, as of 27 October 2021 10:00 (GMT+8)

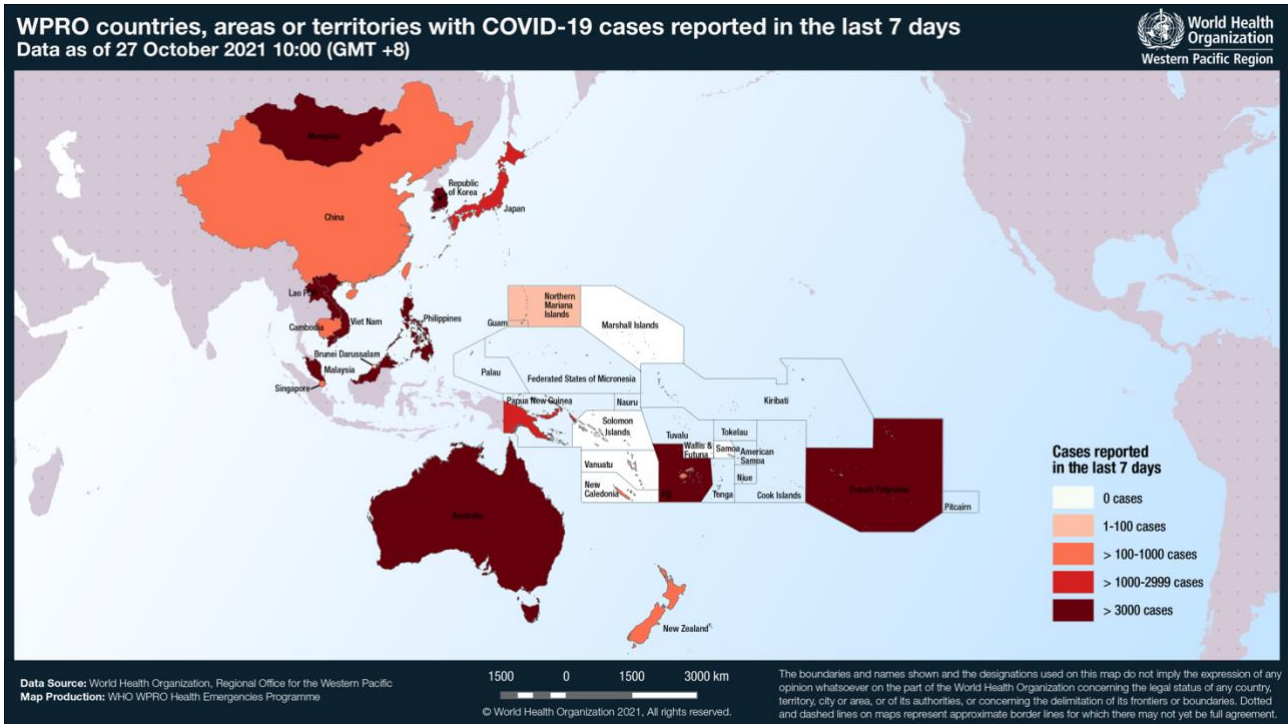
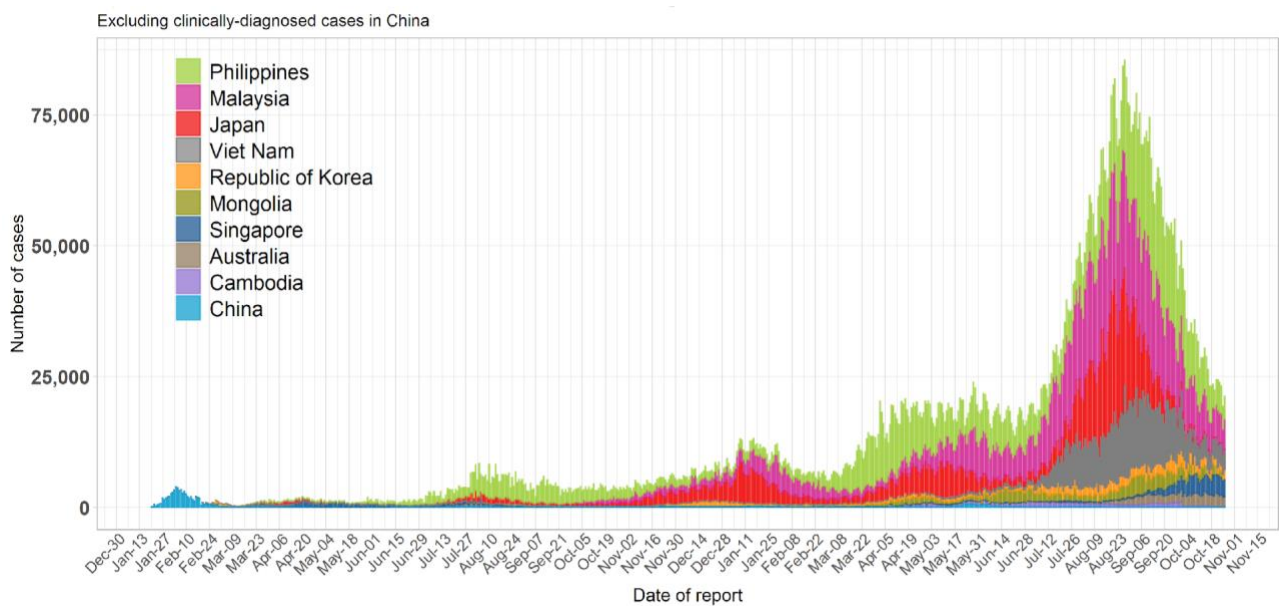
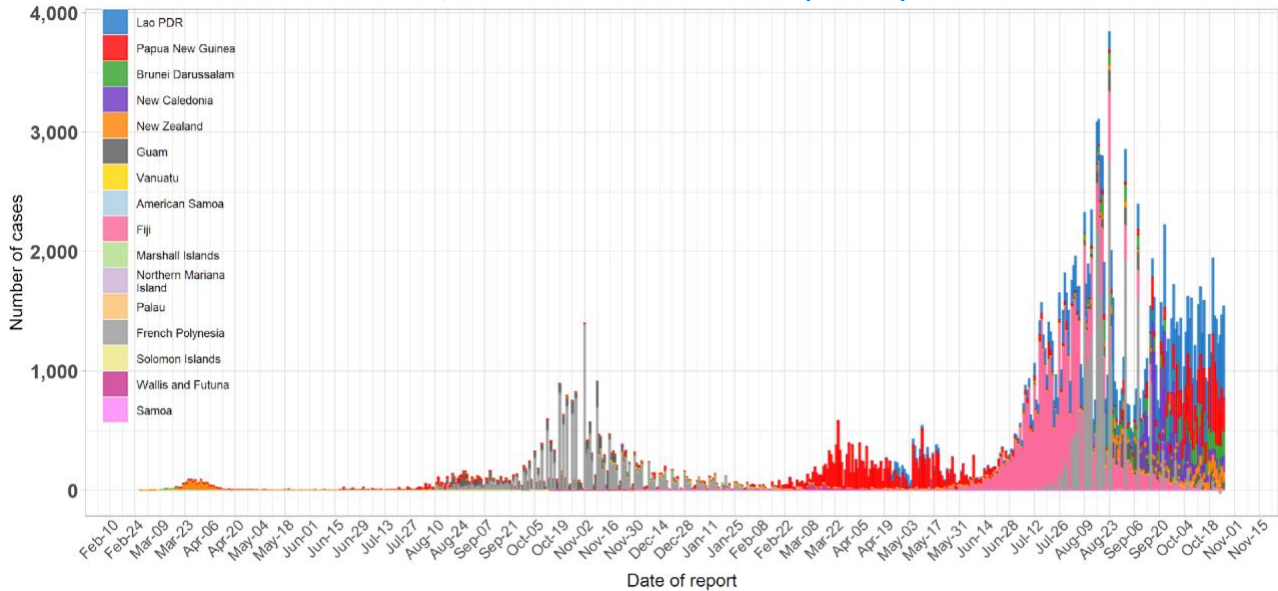


Figure 2. Epidemic curve of confirmed COVID-19 cases in countries or areas with the highest number of cases, as of 27 October 2021 10:00 (GMT+8)



**Figure 3. Epidemic curve of confirmed COVID-19 cases in countries or areas with the smallest number of cases, as of 27 October 2021 10:00 (GMT+8)**



**Table 1. Countries or areas with reported laboratory-confirmed COVID-19 cases and deaths, covering the period from 20 to 26 October 2021, as of 27 October 2021 10:00 (GMT+8) (n = 9 312 827)**

Country or area	New cases (cumulative)	New deaths (cumulative)	Change in 7-day average	Days since last reported case
American Samoa	1 (4)	0 (0)	0.14	6
Australia	14 671 (161 919)	95 (1 653)	-172.43	0
Brunei Darussalam	1 375 (12 595)	3 (53)	-53.29	0
Cambodia	965 (118 000)	70 (2 751)	-105.00	0
China	364 (125 686)	1 (5 696)	22.43	0
Cook Islands	0 (0)	0 (0)	-	-
Fiji	217 (52 063)	12 (673)	-4.43	0
French Polynesia	67 (45 506)	0 (635)	-1.86	0
Guam	323 (14 519)	4 (230)	-1.29	0
Japan	2 003 (1 717 367)	75 (18 221)	-203.71	0
Kiribati	0 (0)	0 (0)	-	-
Korea, Republic of	10 213 (356 301)	99 (2 797)	-19.43	0
Lao PDR	4 047 (37 018)	11 (56)	67.71	0
Malaysia	40 358 (2 442 224)	514 (28 576)	-1 132.71	0
Marshall Islands	0 (4)	0 (0)	0.00	343
Micronesia (Federated States of)	0 (0)	0 (0)	-	-
Mongolia	7 548 (343 229)	86 (1 604)	-221.00	0
Nauru	0 (0)	0 (0)	-	-
New Caledonia	524 (10 687)	18 (261)	-31.71	0
New Zealand	687 (5 539)	0 (28)	33.57	0
Niue	0 (0)	0 (0)	-	-
Northern Mariana Islands	2 (291)	0 (3)	-0.86	2

Country or area	New cases (cumulative)	New deaths (cumulative)	Change in 7-day average	Days since last reported case
Palau	0 (8)	0 (0)	0.00	17
Papua New Guinea	3 131 (28 487)	23 (335)	200.57	0
Philippines	33 918 (2 765 631)	1 105 (42 077)	-2 074.43	0
Pitcairn Islands	0 (0)	0 (0)	-	-
Samoa	0 (1)	0 (0)	0.00	254
Singapore	24 370 (179 095)	93 (339)	264.29	0
Solomon Islands	0 (20)	0 (0)	0.00	200
Tokelau	0 (0)	0 (0)	-	-
Tonga	0 (0)	0 (0)	-	-
Tuvalu	0 (0)	0 (0)	-	-
Vanuatu	2 (5)	0 (0)	0.29	0
Viet Nam	25 919 (896 174)	458 (21 802)	270.57	0
Wallis and Futuna	0 (454)	0 (7)	0.00	173
<b>Total</b>	<b>170 705 (9 312 827)</b>	<b>2 667 (127 797)</b>	<b>-3 162.57</b>	

Note: Data continues to be collected and may change according to Member States' daily reports.

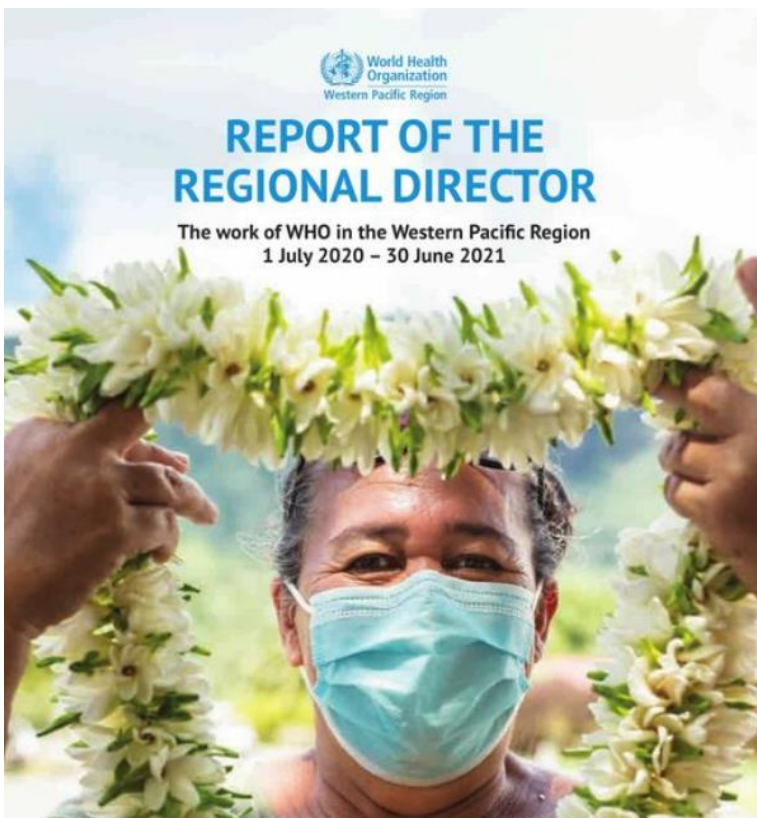
**Table 2. Countries or areas in the Western Pacific Region that have reported variants of concern, as of 27 October 2021 10:00 (GMT+8)**

Country or area	Variant detected			
	B.1.1.7 (Alpha)	B.1.351 (Beta)	P.1 (Gamma)	B.1.617.2 (Delta)
Australia	X	X	X	X
Brunei Darussalam	X	X		X
Cambodia	X	X		X
China	X	X	X	X
Fiji				X
French Polynesia	X	X	X	X
Guam	X	X	X	X
Japan	X	X	X	X
Lao PDR	X			X
Malaysia	X	X		X
Mongolia	X			X
New Caledonia	X			X
New Zealand	X	X	X	X
Northern Mariana Islands				X
Papua New Guinea				X
Philippines	X	X	X	X
Republic of Korea	X	X	X	X
Singapore	X	X	X	X
Viet Nam	X	X		X
Wallis and Futuna	X			

## New Guidance

- On 21 October 2021, WHO headquarters published interim guidance on [Coadministration of seasonal inactivated influenza and COVID-19 vaccines](#). This guidance is based on the advice issued by the Strategic Advisory Group of Experts (SAGE) on Immunization at its meeting on 7 October 2021. This document presents the interim guidance and evidence related to coadministration of COVID-19 and influenza vaccines.
- WHO headquarters published [Interim recommendations for use of the inactivated COVID-19 vaccine, CoronaVac, developed by Sinovac](#). These recommendations were developed based on advice issued by SAGE and the evidence summary included in the [background document](#) and [annexes](#). The annexes 1-6 contain tables that summarize the grading of recommendations, assessment, development and evaluations (GRADE). Annexes 7-9 contain the SAGE evidence-to-recommendation framework tables (ETR tables).

## New communications materials



Dr Takeshi Kasai's 3rd Annual Regional Director's Report covers the WHO Western Pacific's continued response to the [#COVID19](#) pandemic and implementation of the For the Future vision to make the Western Pacific the healthiest and safest Region.

<https://bit.ly/3rdRDReport>

[View the post on Facebook.](#)



Dr Gantsengel Purev never expected to care for his own grandmother in the [#COVID19](#) ward. “My patients are no different from my grandmother and grandfather,” says the doctor from Mongolia. The COVID-19 pandemic has taken its toll not just on Dr Purev, but on health workers in the Western Pacific Region and around the world.

Learn more about Dr Purev’s experience of the evolving COVID-19 response in Mongolia via [this feature story](#).

## Key information and announcements

### Information and planning

- The Regional Office continues to monitor COVID-19 incidence and transmission levels within countries and areas across the Region. Updated information is available on the [dashboard for the Western Pacific Region](#).

### Strategic communication

- The seventy-second session of the Regional Committee, taking place from 25-29 October in Himeji, Japan, has discussed COVID-19’s current situation, future scenarios and the need to continually adjust the response based on the changing landscape, while building on the knowledge and progress gained over the past 20 months. [Watch the video on YouTube](#) and read the factsheet [here](#)