

Overall strategy

The World Health Organization (WHO) Regional Office for the Western Pacific (the Regional Office) encourages Member States to continue to suppress transmission of COVID-19 in order to avoid exceeding health system capacities and to protect vulnerable populations. A risk-based approach using the following tools is recommended: COVID-19 vaccination, calibrated public health and social measures, strengthened health system capacity, early detection and targeted response, and international border measures.

Key highlights

- New cases of COVID-19 were reported in 21 countries or areas in the Western Pacific Region within the past seven days: Australia 13 592, Brunei Darussalam 1519, Cambodia 78, China 338 449, Fiji 11, Guam 95, Japan 377 528, the Republic of Korea 211 948, Lao People's Democratic Republic (PDR) 303, Malaysia 12 811, Marshall Islands 51, Micronesia (Federated States of) 537, Mongolia 390, New Caledonia 39, New Zealand 4071, Northern Mariana Islands 15, Palau 15, Papua New Guinea 36, the Philippines 16 375, Singapore 16 363, and Viet Nam 13 506.
- Two Western Pacific countries or areas that had previously reported cases have reported no new cases within the past seven days: Tuvalu (35 days), and Pitcairn Islands (69 days). One Pacific Island country or area has not reported a case to date: Tokelau. American Samoa, Cook Islands, French Polynesia, Kiribati, Nauru, Niue, Samoa, Solomon Islands, Tonga, Vanuatu, and Wallis and Futuna did not update the number of cases due to reporting issues.

Epi update

COVID-19

Member States

21

countries or areas reporting cases
in the past 7 days

14

countries or areas reporting ZERO
cases for more than 7 days

Cases

1 007 732

past 7 days

89 418 210

cumulative cases

Deaths

1 975

past 7 days

270 145

cumulative deaths

Deployments

COVID-19

response

532

total
deployments

451

deployments
completed

28

actively supporting
country offices

12

actively supporting
the Regional Office

41

currently supporting
remotely

Supplies and logistics for health care workers shipped to 38 destinations in the Western Pacific Region (as of 21 September 2022)



23 226 474
surgical masks



4 555 804
particulate
respirators



1 173 099
medical gowns



331 452
goggles



1 203 464
face shields



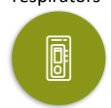
5 607 960
pairs of gloves



23 994
alcohol-based
hand rub (100mL)



682 312
laboratory tests



1 845 254
point of care tests



3 601 510
swab kits



601
ICU ventilators



2 938
oxygen concentrators



28 835
pulse oximeters

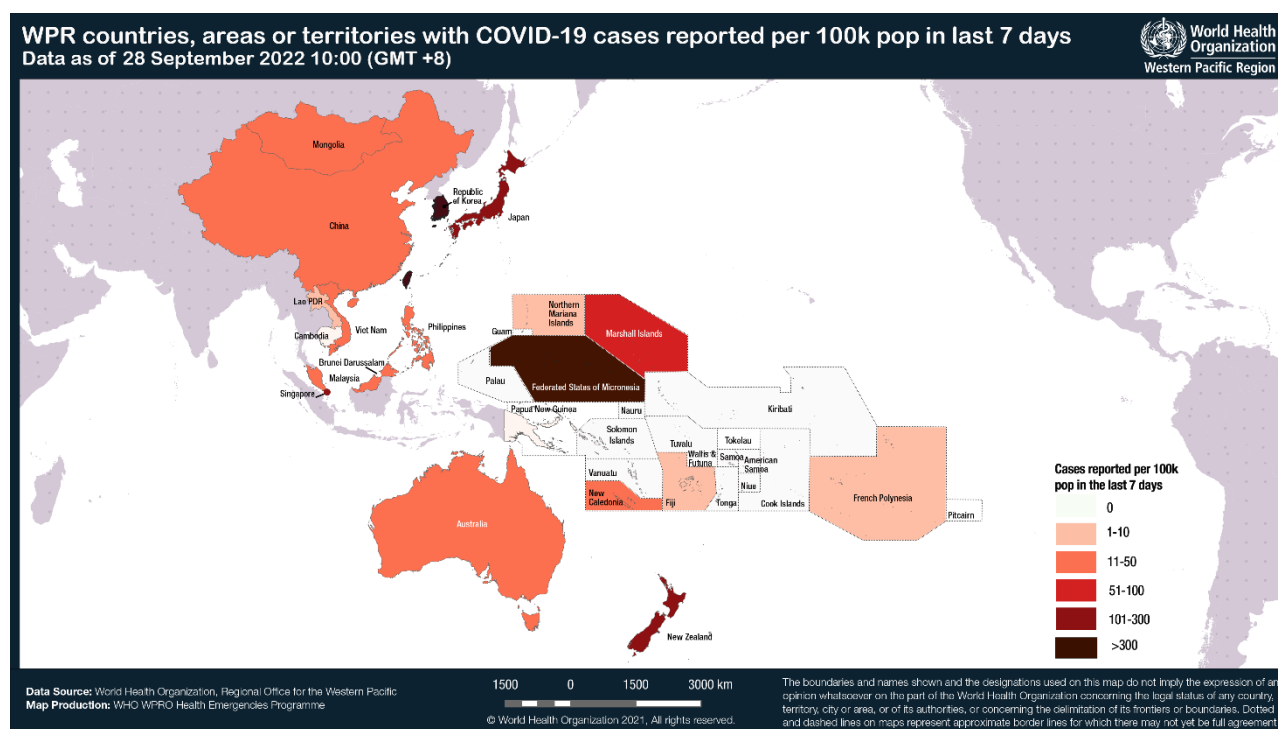


213 240
rapid antigen tests

Weekly situation updates

- In the Region, 34 countries and areas have reported COVID-19 cases since December 2019. From 21 to 27 September 2022, a total of 1 007 732 cases with 1975 deaths were reported, for a cumulative 89 418 210 cases with 270 145 deaths (proportion of fatal cases (PFC) 0.3%) as of 28 September, 10:00 (GMT+8). Available data indicate that countries and areas in the Region have identified imported cases and/or localized community transmission, while subnational areas in some countries and areas have identified large-scale community transmission. Figure 1 shows the geographical distribution of cases reported in the last seven days. Updated information about transmission stage assessment (TSA)¹ in each Member State is available on the [TSA map dashboard](#).
- Globally, 613 410 796 COVID-19 cases with 6 518 749 deaths have been reported in 233 countries or areas (PFC 1.1%) as of 28 September 2022 18:00 (CEST). The number of new weekly cases and deaths decreased or remained stable across six regions.

Figure 1. Countries or areas with reported confirmed cases of COVID-19 from 21 to 27 September 2022, as of 28 September 2022 10:00 (GMT+8)



¹ 0-No cases: no cases detected and no clear signals of transmission for at least 28 days (or two incubation periods); 1-Imported cases: cases reported in the past 28 days are imported or linked to importation within 3 generations, and there are no clear signals of local transmission; 2-Localized community transmission: cases reported in the past 28 days are localized and cannot be linked to importations, though most are linked to a cluster, and there are no clear signals of large-scale community transmission; 3-Large-scale community transmission: most cases reported in the past 28 days have no known link to a cluster and are spread across the area, and there are clear signals of increasing transmission and severe outcomes.

Figure 2. Epidemic curve of confirmed COVID-19 cases in countries or areas with the highest number of cases, as of 28 September 2022 10:00 (GMT+8)

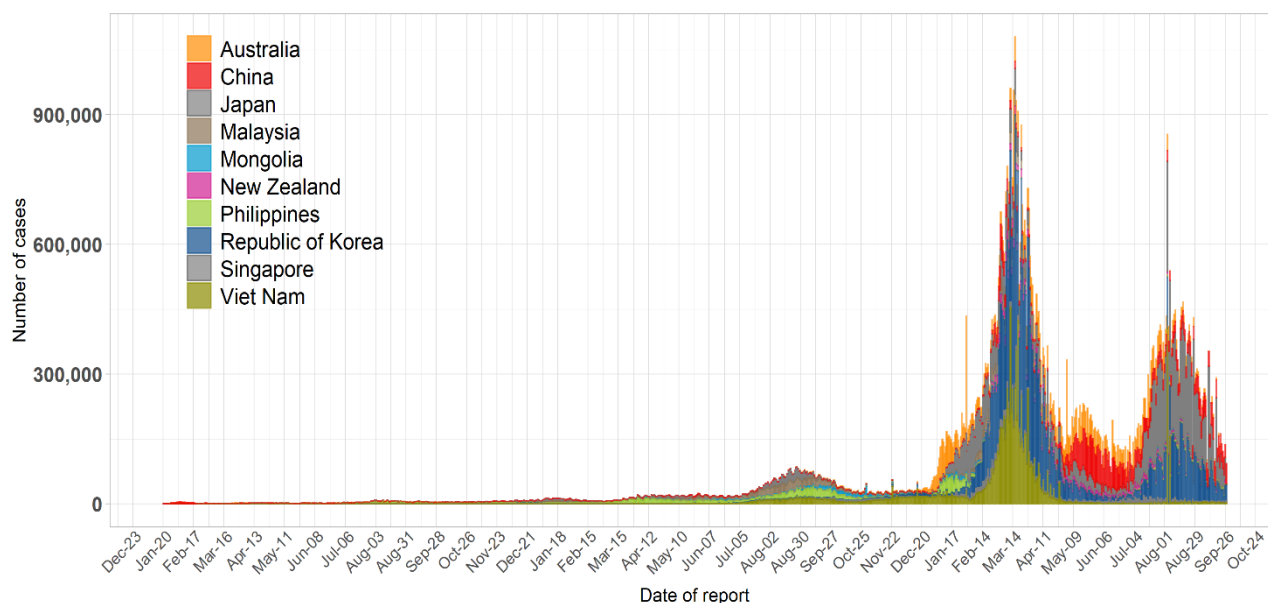


Figure 3. Epidemic curve of confirmed COVID-19 cases in countries or areas with the lowest number of cases, as of 28 September 10:00 (GMT+8)

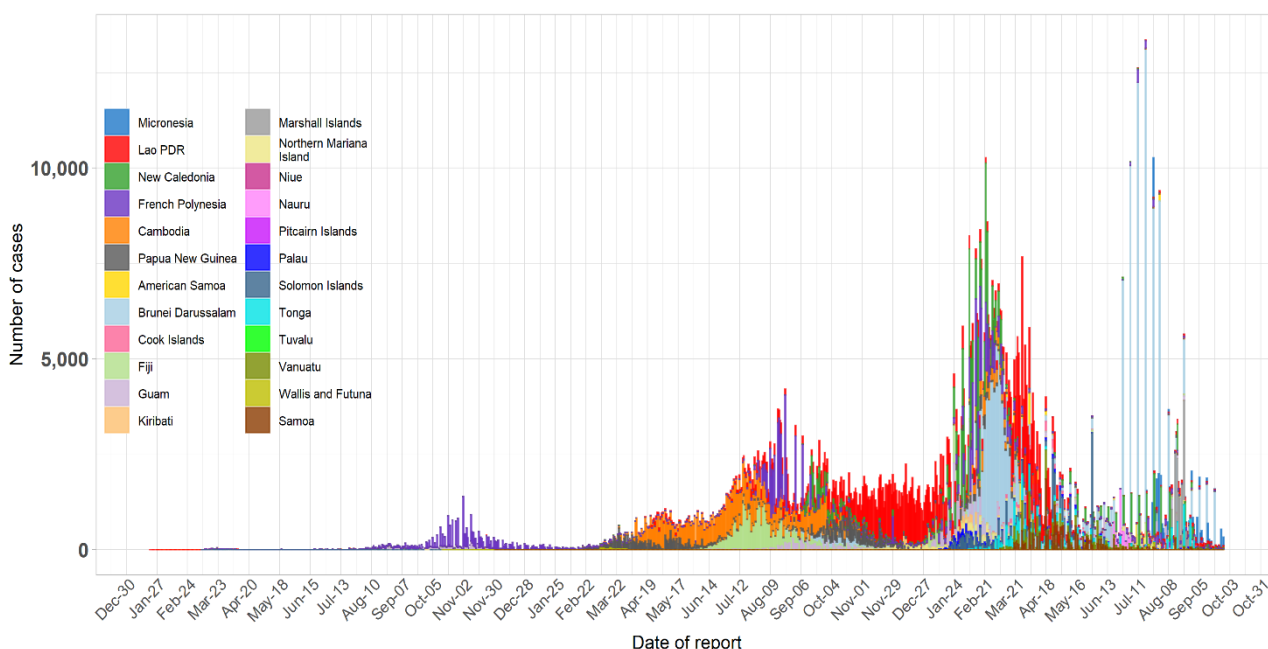


Table 1. Countries or areas with reported laboratory-confirmed COVID-19 cases and deaths, covering the period from 21 to 27 September 2022, as of 28 September 2022 (GMT+8)

| Country or area | New cases (cumulative) | New deaths (cumulative) | Change (7-day average of cases) | Days since last reported case |
|----------------------------------|-------------------------|-------------------------|---------------------------------|-------------------------------|
| American Samoa | 0 ² (8 244) | 0 (34) | -3.86 | 0 |
| Australia | 13 592 (10 191 312) | 81 (14 853) | -7 414.14 | 0 |
| Brunei Darussalam | 1 519 (227 756) | 0 (131) | -15.43 | 0 |
| Cambodia | 78 (137 849) | 0 (3 056) | 3.71 | 0 |
| China | 338 449 (7 522 247) | 532 (26 244) | 4 499.00 | 0 |
| Cook Islands | 02 (6 389) | 0 (1) | -0.43 | 0 |
| Fiji | 11 (68 234) | 0 (878) | -0.71 | 0 |
| French Polynesia | 0 ² (76 588) | 0 (649) | -4.00 | 0 |
| Guam | 95 (48 842) | 7 (401) | 2.43 | 0 |
| Japan | 377 528 (21 118 325) | 636 (44 463) | -20 226.14 | 0 |
| Kiribati | 0 ² (3 430) | 0 (13) | 0.00 | 0 |
| Korea, Republic of | 211 948 (24 673 630) | 381 (28 272) | -21 514.29 | 0 |
| Lao PDR | 303 (215 751) | 0 (757) | -23.29 | 0 |
| Malaysia | 12 811 (4 833 008) | 40 (36 357) | -61.71 | 0 |
| Marshall Islands | 51 (15 275) | 0 (17) | 7.29 | 0 |
| Micronesia (Federated States of) | 537 (10 584) | 0 (31) | 76.71 | 0 |
| Mongolia | 390 (982 807) | 0 (2 131) | -66.29 | 0 |
| Nauru | 0 ² (4610) | 0 (1) | 0.00 | 0 |
| New Caledonia | 39 (74 257) | 0 (314) | -7.43 | 0 |
| New Zealand | 4 071 (1 762 209) | 54 (3 037) | -1269.43 | 0 |
| Niue | 0 ² (80) | 0 (0) | -0.43 | 0 |
| Northern Mariana Islands | 15 (13 171) | 0 (40) | 2.00 | 0 |
| Palau | 15 (5 460) | 0 (6) | 0.00 | 0 |
| Papua New Guinea | 36 (44 985) | 0 (664) | 0.43 | 0 |
| The Philippines | 16 375 (3 940 101) | 232 (62 819) | 121.00 | 0 |
| Pitcairn Islands | 0 (4) | 0 (0) | 0.00 | 69 |
| Samoa | 0 ² (15 925) | 0 (29) | -5.14 | 0 |
| Singapore | 16 363 (1 892 947) | 7 (1 615) | 167.00 | 0 |
| Solomon Islands | 0 ² (21 544) | 0 (153) | 0.00 | 0 |
| Tokelau | 0 (0) | 0 (0) | 0.00 | 0 |
| Tonga | 0 ² (16 182) | 0 (12) | 0.00 | 0 |
| Tuvalu | 0 (20) | 0 (0) | 0.00 | 35 |
| Vanuatu | 0 ² (11 950) | 0 (14) | -5.14 | 0 |
| Viet Nam | 13 506 (11 473 733) | 5 (43 146) | -727.86 | 0 |
| Wallis and Futuna | 0 ² (761) | 0 (7) | 0.00 | 0 |
| Total | 1 007 732 (89 418 210) | 1 975 (270 145) | -46 556.29 | |

Note: Data continues to be collected and may change according to Member States' daily reports.

² The number of cases was not updated due to reporting issues

Table 2. Countries or areas in the Western Pacific Region that have reported currently circulating variants of concern, as of 28 September 2022 10:00 (GMT+8)

| Country or area | B.1.1.529 ³ (Omicron) | Sub-lineages ⁴ | | | |
|----------------------------------|-------------------------------------|---------------------------|---------|------|------|
| | | BA.2.12.1 | BA.2.75 | BA.4 | BA.5 |
| American Samoa | X | X | | X | X |
| Australia | X | X | X | X | X |
| Brunei Darussalam | X | | | X | X |
| Cambodia | X | X | X | X | X |
| China | X | X | X | X | X |
| Cook Islands | X | | | | |
| Fiji | X | | | | |
| French Polynesia | X | | | | |
| Guam | X | X | | | X |
| Japan | X | X | X | X | X |
| Kiribati | X | | | | X |
| Lao PDR | X | | | | X |
| Malaysia | X | X | X | X | X |
| Micronesia (Federated States of) | X | | | | X |
| Mongolia | X | | | X | X |
| New Caledonia | X | | | | |
| New Zealand | X | X | X | X | X |
| Northern Mariana Islands | X | X | | | X |
| Palau | X | X | | | X |
| Papua New Guinea | X | | | | |
| The Philippines | X | X | | X | X |
| Republic of Korea | X | X | X | X | X |
| Samoa | X | X | | | |
| Singapore | X | X | X | X | X |
| Solomon Islands | X | | | | X |
| Tonga | X | | | | |
| Vanuatu | X | | | | |
| Viet Nam | X | X | | X | X |

Note: GISAID submission data is subject to change.

³ Based on the official announcement of each country's health authority.

⁴ Based on sequences uploaded to [Global Initiative on Sharing Avian Influenza Data \(GISAID\)](https://gisaid.org/); BA.4 and BA.5 sections include all BA.4-like and BA.5-like sub-lineages.

Key information and announcements

Information and planning

- The Regional Office continues to monitor COVID-19 incidence and transmission levels within countries and areas across the Region. Updated information is available on the [dashboard for the Western Pacific Region](#).

Strategic Communication

- Integrated report on perceptions and behavioral insights on COVID-19 across seven countries in the Western Pacific Region finalized.
- Monitoring, evaluation, and learning (MEL) report for January to June is being prepared.
- Ongoing social listening activities and support to country offices. The structure of the COVID-19 Social Listening report is simplified and shortened to make it more user-friendly for different audiences. Its dissemination plan is being finalized.
- New content in the pipeline:
 - Contextual measures in different settings
 - Booster doses
 - Immunity and Omicron
 - Long COVID-19

Messages for the public

- On social media, continued publishing the updated materials on [keeping schools safe](#) from COVID-19, and reposted the People of the Western Pacific (POWP) [video](#) honouring health workers during the pandemic. Also shared HQ posts on the updated COVID-19 clinical management guidelines, pandemic lessons, new Omicron booster vaccines and the Director-General's video on ending the pandemic.
- Top COVID-19 Facebook posts:
 - [WHO Clinical Management of COVID-19: Living Guideline](#)
 - [Safe schools: stay at home when sick](#)
 - [Safe schools: stagger breaks](#)
- Top COVID-19 Twitter posts:
 - [HQ video on Omicron booster vaccines](#)
 - [HQ video on ending the pandemic](#)
 - [POWP video on health workers during COVID-19](#)
- The Early Essential Newborn Care (EENC) campaign with [COVID-19 protective measures](#) is ongoing over Facebook Lao PDR, Philippines and Viet Nam. Overall, the campaign has so far reached 43 million people in these WPR countries and including previous campaign areas Mongolia, Papua New Guinea, Solomon Islands and Vanuatu.