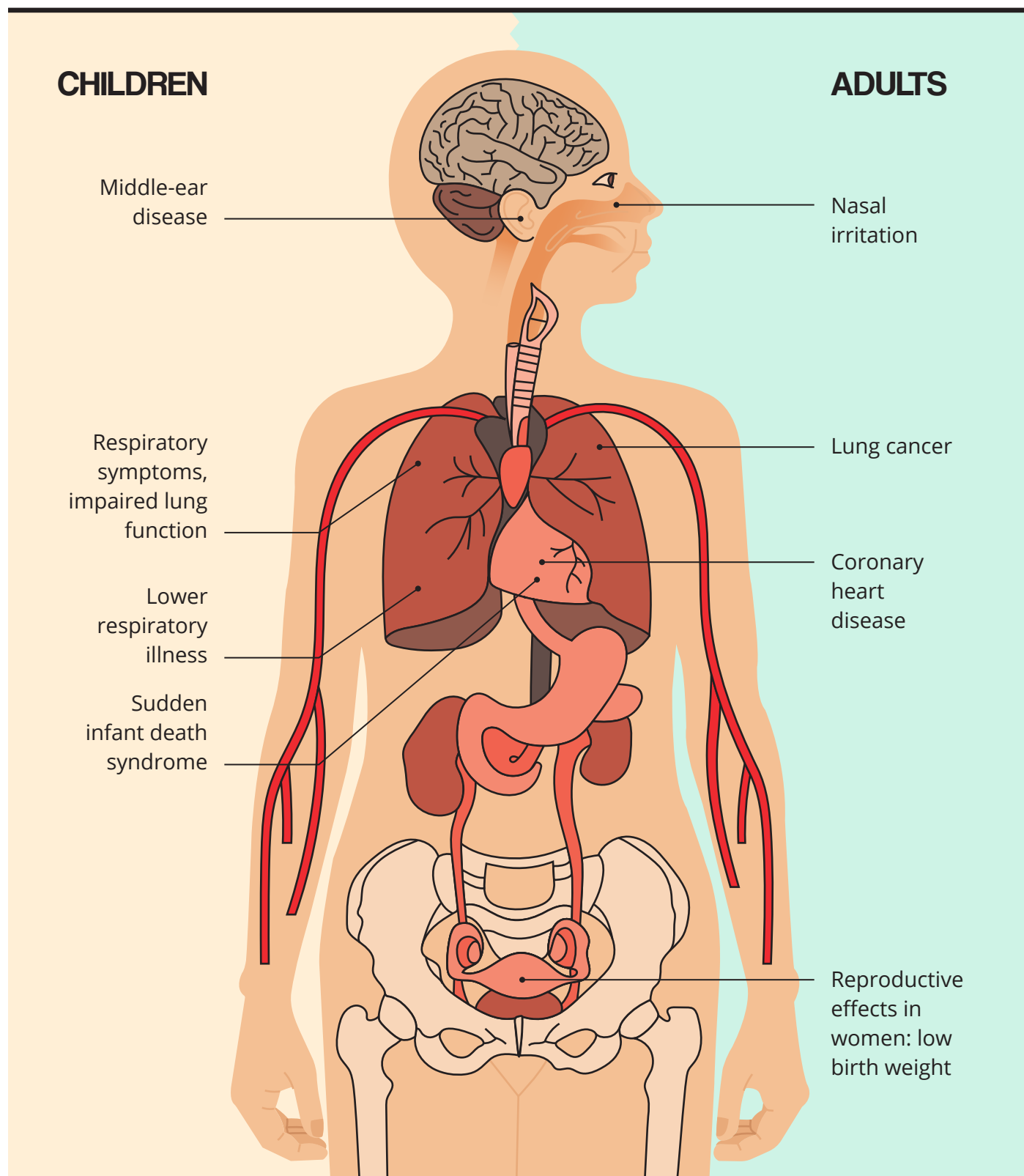


EXAMPLES OF DISEASES INDUCED BY EXPOSURE TO SECOND-HAND TOBACCO SMOKE



Source

WHO report on the global tobacco epidemic, 2011: warning about the dangers of tobacco. Geneva: World Health Organization; 2011 (<https://apps.who.int/iris/handle/10665/44616>, accessed 15 June 2023).



© World Health Organization 2023. Some rights reserved. This work is available under the CC BY-NC-SA 3.0 IGO licence.