

## Impact of COVID-19 on population health

Between January 2020 and December 2021, more than **102 million people infected** with COVID-19 in the Region



### 1.7 MILLION

1.7 million people died as a result of COVID-19

This corresponds to a crude cumulative mortality rate of 1 800 per million population

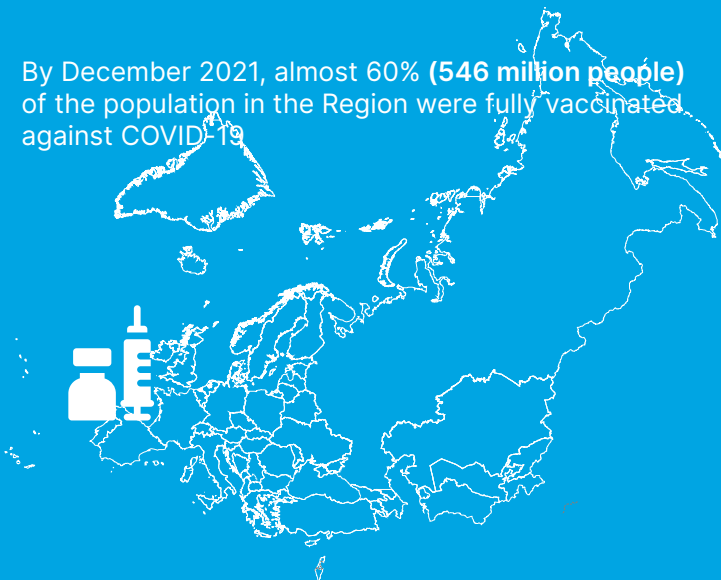


COVID-19 excess mortality estimate: between 1.11 and 1.21 million people in 2020



This corresponds to a crude cumulative mortality rate of 1 800 per million population

By December 2021, almost 60% (**546 million people**) of the population in the Region were fully vaccinated against COVID-19



**10%** of all health care workers have been infected with COVID-19; 50% of these are nurses, 25% physicians.



Migrants and refugees: infection risk is **twice as high** among refugees and migrants than the general population



**10-20%** of people infected suffer from what is known as "Long COVID"



## Wider effects of COVID-19 on population health



**40%** of essential health services have been at least partially disrupted in the Region



During the first three months of 2021, about **29%** of health services were still disrupted



**48%** of countries in the Region reported disruptions to essential primary care services



**41%** of countries in the Region reported disruptions to rehabilitation, palliative and long-term care



**41%** of countries in the Region reported disruptions to mental and psychosocial services, including for children, adolescents and older people